



# SNOW & ICE

CONTROL SOLUTIONS

PRODUCT GUIDE





Muncie Power has developed industry-leading hydraulic and control solutions for a variety of snow and ice applications.



APPLICATIONS	OMNI-SYSTEM <sup>®</sup> PLUS	OMNI-SYSTEM <sup>®</sup>	CONVENTIONAL SYSTEMS	V080 HYBRID	MESP 3020	MESP 3016/17
Front Plow	✓	✓	✓	✓		
Wing / Scraper Plows	✓	✓	✓	✓		
Precision Placement / Directional Cast System	✓		✓			
Tailgate / V-Body / Muni-Body Spreader Systems	✓	✓	✓	✓	✓	✓
Tow Plows	✓					
Swap Loader / Hooklift-Type Systems / Winches	✓	✓	✓			
Hoists (Telescopic / Rod)	✓	✓	✓	✓	✓ (6 GPM max)	
Side Dump	✓	✓	✓			
Tarp Cover	✓	✓	✓			
Broom Circuits	✓	✓	✓			
Pre-Wet (Electric / Hydraulic)	✓	✓				
Anti-Ice	✓					
Data Logging	✓	✓				
Video Playback	✓					
Remote Diagnostics	✓					
Video and Camera Ready	✓					

# Omni-System® Plus

The Omni-System Plus is a high-level technology solution for snow and ice control systems that increases reliability and revolutionizes the way in which your fleet is operated and maintained. This system includes integrated CAN-BUS technology to minimize wires and improve reliability. With features like remote diagnostic support via Wi-Fi, flow sharing, cartridge valve technology, multi-camera functionality, video playback, and enhanced data logging, we're changing the game—big time.

INTERNAL  
GPS  
ANTENNA



DRIVE-BY  
DOWNLOAD  
CAPABILITY



REMOTE  
DIAGNOSTICS



## MEETING THESE NEEDS

Class 5 to Class 8 Chassis



Data Logging



Wing / Scraper Plows



Hoists (Telescopic / Rod)



Front Plow Options



Pre-Wet (Electric / Hydraulic)



Side Dump



Tow Plows



Tarp Cover



Plow Power Float



Swap Loader / Hooklift-Type Systems / Winches



Multiple Body Applications



Directional Spinner Systems



Anti-Ice



Precision Placement / Directional Cast System



Broom Circuits



Tailgate / V-Body / Muni-Body Spreader Systems



Light-Duty



Medium-Duty



Heavy-Duty

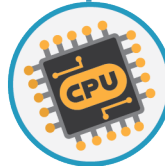




INTUITIVE  
CONTROL  
SETUP



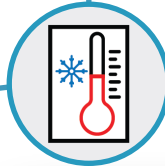
NEW  
CONTROL  
PANEL



EXPANDED  
CAPABILITIES



LARGER 7"  
TOUCHSCREEN



AIR AND ROAD  
TEMPERATURE  
SENSOR

## JOYSTICK CONTROL OPTIONS

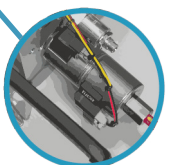
Multiple joystick configurations  
available for optimum  
cylinder control



VIDEO  
PLAYBACK



VIDEO AND  
CAMERA READY



CARTRIDGE  
VALVE  
DESIGN



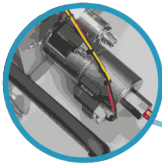
# Omni-System<sup>®</sup>

The Omni-System is a mid-level technology solution for snow and ice control systems that provides the ultimate balance amongst performance, economy, convenience, and safety. The system includes an intuitive setup for more responsive hydraulic controls, an enhanced hydraulic setup for smoother performance, and integrated CAN-BUS technology to minimize wires and improve system reliability.

INTUITIVE  
CONTROL  
SETUP



CARTRIDGE  
VALVE  
DESIGN



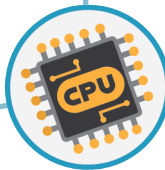




AIR AND ROAD TEMPERATURE SENSOR



NEW CONTROL PANEL



EXPANDED CAPABILITIES

## JOYSTICK CONTROL OPTIONS

Multiple joystick configurations available for optimum cylinder control



## MEETING THESE NEEDS

Class 5 to Class 8 Chassis



Broom Circuits



Data Logging



Swap Loader / Hooklift-Type Systems / Winches



Wing / Scraper Plows



Tarp Cover



Hoists (Telescopic / Rod)



Tailgate / V-Body / Muni-Body Spreader Systems



Front Plow Options



Side Dump



Pre-Wet (Electric / Hydraulic)



Light-Duty



Medium-Duty



Heavy-Duty

# CONVENTIONAL SYSTEMS

Designed to fit small to large chassis, Muncie Power offers conventional stack valve systems mounted in weather-tight enclosures with air, cable, or electric shift options, in addition to electronic spreader control packages. Muncie Power's conventional systems can be configured to meet your exact specifications.

INTUITIVE  
CONTROL  
SETUP



STACK  
VALVE  
DESIGN



## MEETING THESE NEEDS

Class 5 to Class 8 Chassis



Open Center / Load Sense



Side Dump



Swap Loader / Hooklift-Type Systems / Winches



Wing / Scraper Plows



Tarp Cover



Front Plow Options



Tailgate / V-Body / Muni-Body Spreader Systems



Broom Circuits



Hoists (Telescopic / Rod)



Light-Duty



Medium-Duty



Heavy-Duty





## SPREADER CONTROL

## CYLINDER CONTROL OPTIONS

Control consoles available in air, cable, or electric shift

Programmable, push-button controls are backlit and come with up to eight 15 AMP outputs to handle the demands of heavy work trucks



CABLE CONSOLE



AIR-SHIFT CONSOLE



CONTROL PANELS

# V080 HYBRID SPREADER PACKAGES

The hybrid setup is a compact system that interfaces our spreader manifold with our cable shifted sectional valves minimizing enclosure plumbing. The unique hydraulic circuit allows flow sharing during simultaneous operations and provides full flow to the spreader when the cylinders are idle.

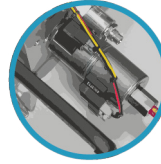




INTUITIVE  
CONTROL  
SETUP



STACK  
VALVE  
DESIGN



CARTRIDGE  
VALVE  
DESIGN

## MEETING THESE NEEDS

Class 5 to Class 7 Chassis



Tailgate / V-Body / Muni-Body Spreader Systems



Wing / Scraper Plows



Tailgate / V-Body / Muni-Body Spreader Systems



Hoists\*



*\* Hoist MAX Flow = 6 GPM. System not compatible with SA telescopic cylinders.*



Light-Duty



Medium-Duty

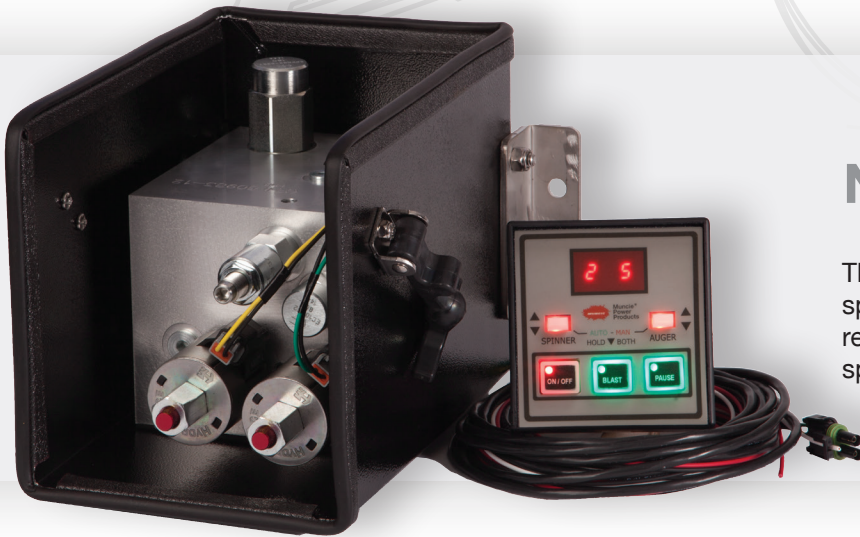


# MESP SPREADER PACKAGES

The Muncie Electronic Spreader Package (MESP) is designed to fit small to large chassis. They feature ground-speed control, which allows for salt conservation, saving money, and the driver to focus on driving. These systems are simple to install and setup, and are perfect for new or retrofit installations.

## MESP 3016/3017

The MESP 3016/3017 electronic spreader package is perfect for new or retrofit installations and is suitable for all spreader setups.



## MEETING THESE NEEDS

Class 5 to Class 8 Chassis



Tailgate / V-Body / Muni-Body Spreader Systems



Light-Duty



Medium-Duty

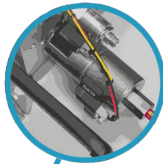


Heavy-Duty

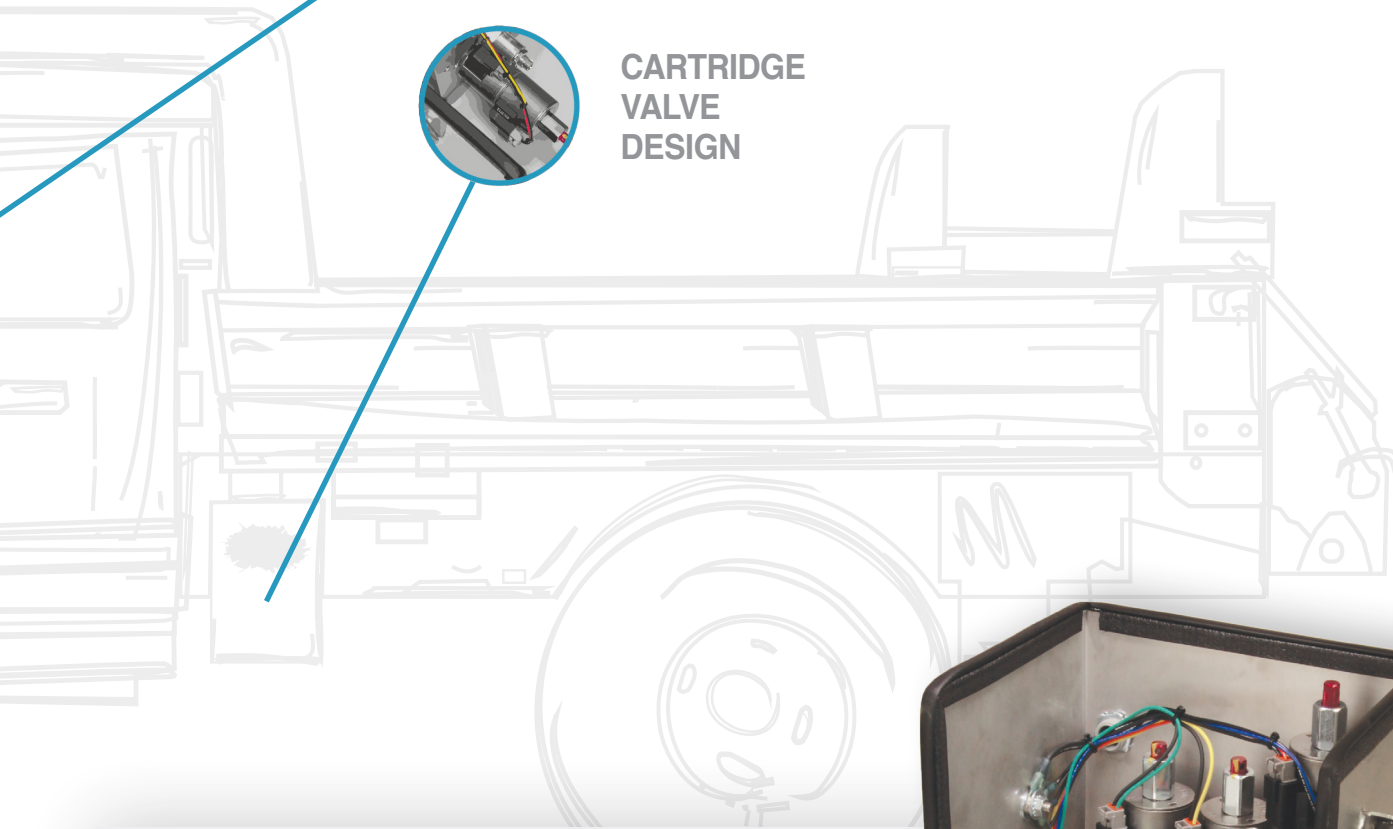




INTUITIVE  
CONTROL  
SETUP



CARTRIDGE  
VALVE  
DESIGN



## MESP 3020

The MESP 3020 is an electronic spreader package. Our MESP 3020 includes an integrated hoist circuit, simple setup, and has an easy-to-use controller.

### MEETING THESE NEEDS

Class 5 to Class 8 Chassis

Tailgate / V-Body / Muni-Body Spreader Systems



Hoists\*



\* Hoist MAX Flow = 6 GPM. System not compatible with SA telescopic cylinders



Light-Duty

# HYDRAULIC POWER COMPONENTS



## DC POWER PACKS

Designed for reliable, quality performance, Muncie Power's DC Power Packs feature motors available in 12 VDC and 24 VDC. Use our DC Power Packs for numerous applications such as snow plows.



## HYDRAULIC FILTERS

Reduce contamination-related failures and equipment downtime with Muncie Power's high-pressure and return line hydraulic filters—available in both nominal and absolute filtration.

## INDICATOR DISPLAYS AND SWITCHES

Muncie Power's indicator light display is a simple, easy-to-install solution for audible and visual caution indicator lights. The small display can mount in any sight lines and includes the switches necessary for each light. The display comes standard with a buzzer that is easily switched on and off.



Body Up Switch



Filter Bypass



Hot Oil/Low Oil



Cold Oil



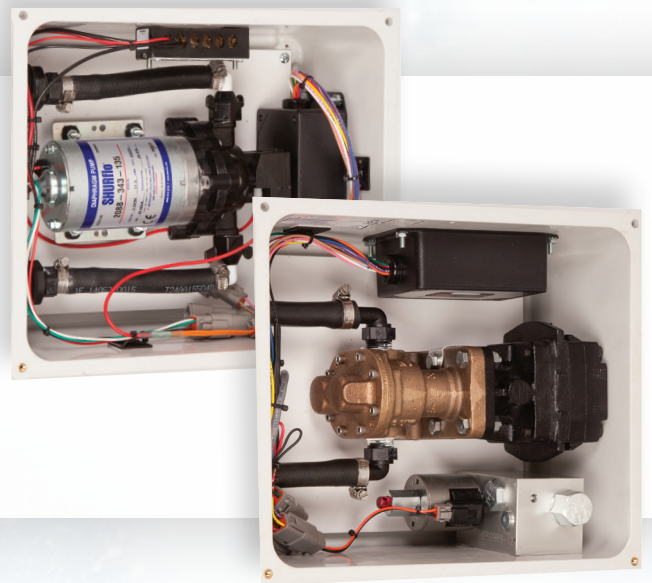
## HYDRAULIC RESERVOIRS

Muncie Power offers a wide variety of tanks ranging from 15–100 gallon capacities. Standard or custom tanks are available with an optional in tank return line filter and can be designed to fit any snow and ice application.



## PRE-WET KITS

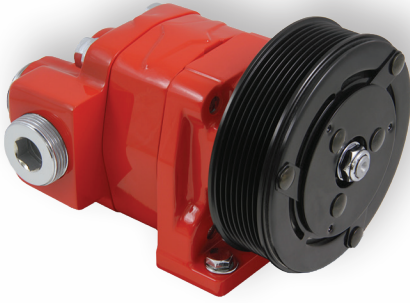
Developed to match the granular groundspeed spreading consistently to maintain the desired gallons per ton of salt distribution. Our electric and hydraulic pre-wet kits are mounted and pre-wired into Nema enclosures. Pumps are available for 5 or 6 GPM in electric systems or 10 to 20 GPM in hydraulic systems.



## POWER TAKE-OFFS

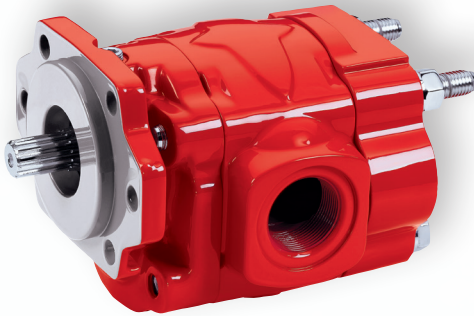
The CS6/8, FR22, F20, and A20 Series are Muncie Power's most popular PRO selections for snow and ice control applications. Regardless of your application needs, we have a wide range of PTO options, including those that fit Ford Super Duty trucks and Allison transmissions.





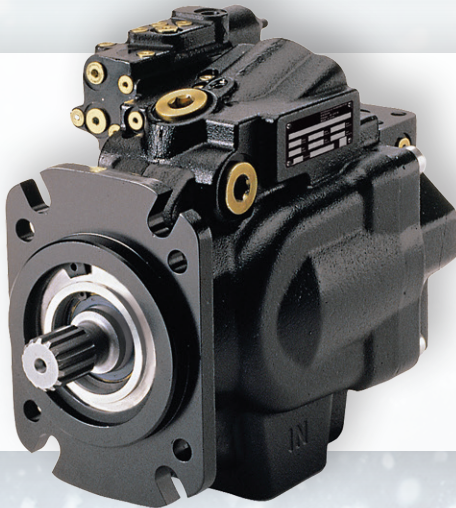
## CLUTCH PUMPS

High-performance and compact, cast iron housings make our clutch pumps a good choice for many central hydraulic systems with flow ratings up to 11 GPM and pressures up to 4,350 PSI.



## GEAR PUMPS

A proven performer in thousands of snow and ice control trucks, our line of gear pumps are simple, rugged, effective, and reliable. Muncie Power's gear pumps are available in different sizes, pressures, shafts, and mounting options to meet the needs of virtually any central hydraulic system application.



## VARIABLE DISPLACEMENT PISTON PUMPS

Many flow ranges and options are available for Muncie Power's variable displacement pumps. Each of these pumps have been designed specifically for the rigorous operations and environments encountered by snow and ice control vehicles.



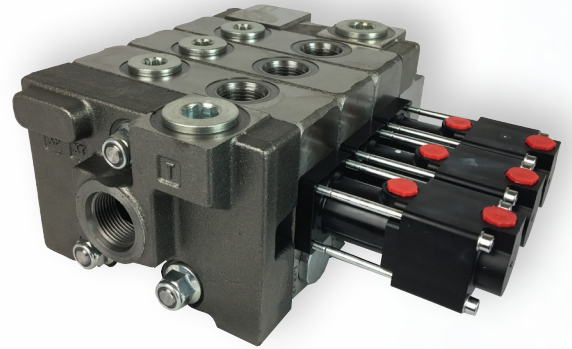
## TANDEM PUMPS

With two pumps in one, our tandem pumps give an independent flow source to the spreader operation and another to satisfy the flow requirements of the cylinders. An increasingly popular option to achieving optimum operation of your equipment at all engine speeds, our tandem pump is built upon the proven K/L Series pumps.



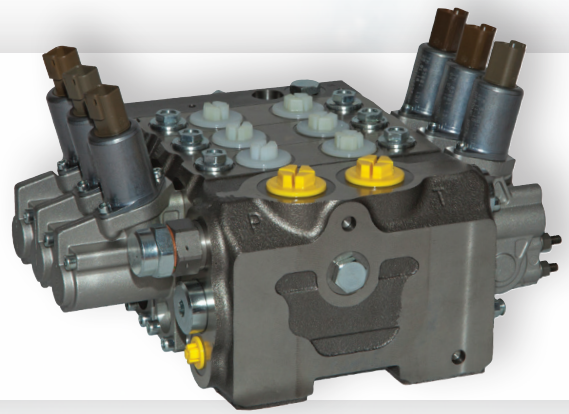
# DIRECTIONAL CONTROL VALVES

Different spool, control, positioner, and accessory options allow for customization of Muncie Power's directional control valves. Each work section comes preassembled and 100% tested prior to shipment for customer satisfaction. The series of valves are available in air, cable, or electric shift.



# LOAD SENSE VALVES

Available in air, cable, or electric operation, our closed-centered, post-compensated load sense valve features flow sharing sections with local compensators resulting in an efficient, hydraulic control valve.



# FLUID CONVEYANCE PRODUCTS

Muncie Power offers the Interpump Fluid Solutions line of hose, fittings and crimpers. With our primary inventory warehouse in Muncie, Indiana, we are ready to meet the needs of the snow and ice market.

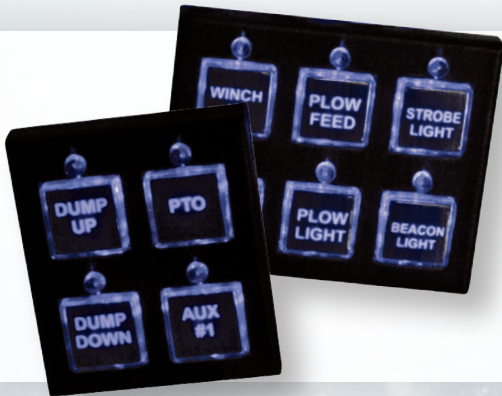


# HYDRAULIC CONTROLS



## MANUAL SPREADER VALVES

A tried-and-true product, our manual spreader valves are considered an old standby and have been utilized in snow and ice applications for years.



## CONTROL PANELS

Muncie Power's programmable, push-button controls are not only backlit, but are available in a variety of configurations. Including button legends, our controls come with up to eight 15 AMP output to handle the power demands of heavy work trucks.



## JOYSTICKS

Muncie Power offers fully proportional electronic joystick controls to provide smooth cylinder speed control. Our joysticks work with cartridge and pilot operated valves for optimal performance.



# CONTROL CONSOLES

Available in air, cable, or electric operation, Muncie Power's control consoles are functional and attractive while meeting the demands of your application.

## AIR SHIFT CONTROLS

Add value to your finished installation with Muncie Power's high-quality, air shift control packages. With many options available, we offer spring center, detent, single-axis, dual-axis with color-coded airlines, and push-on fittings.





**Muncie<sup>®</sup>  
Power  
Products**



201 EAST JACKSON STREET • MUNCIE, INDIANA 47305 • 800-367-7867 • [MUNCIEPOWER.COM/OMNI-SYSTEM-PLUS](http://MUNCIEPOWER.COM/OMNI-SYSTEM-PLUS)