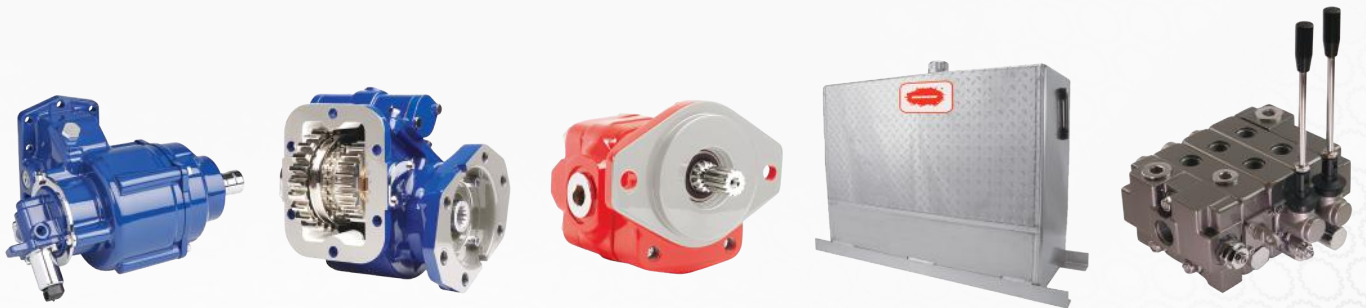




# LOGGING/FORESTRY PRODUCT OVERVIEW



**POWER TAKE-OFFS AND HYDRAULIC COMPONENTS**



**Muncie Power Products, Inc.** is a proud manufacturer of power take-offs and fluid power components for applications within the logging and forestry industry. Since the company was founded in 1935, Muncie Power Products has taken great pride in providing unparalleled service to each and every customer. In collaboration with other companies within the Interpump Group, Muncie Power Products has the ability to provide access to nearly every major component in a hydraulic system with the dependability you've come to expect from Muncie Power Products.

At Muncie Power Products, it's about more than building hydraulic components; it's about building trust.



**WE BUILD  
TRUST.**



# DUMP TRUCKS



## TG SERIES

- Versatile PTO with 10 speed ratios for all popular transmissions
- Lightweight, reduced noise and superior heat dissipation

|                             |                      |
|-----------------------------|----------------------|
| <b>MAX TORQUE</b>           |                      |
| INTERMITTENT:               | 285 lbs.ft. (386 Nm) |
| CONTINUOUS:                 | 200 lbs.ft. (270 Nm) |
| <b>MAX HP (@ 1,000 RPM)</b> |                      |
| INTERMITTENT:               | 54 HP (40 kW)        |
| CONTINUOUS:                 | 38 HP (28 kW)        |
| <b>APPROX. WEIGHT</b>       | 22 lbs. (10.0 Kg.)   |

## CS6/8 SERIES



- Designed for Allison 1000 and 2000 Series automatic transmissions as well as many current manual transmissions offering direct-mount pump options
- Patented, Muncie Power drag break prevents shaft rotation in "off" mode
- Direct-mount flanges with ability to rotate allow the pump to be positioned for maximum clearance

|                             |                      |
|-----------------------------|----------------------|
| <b>MAX TORQUE</b>           |                      |
| INTERMITTENT:               | 300 lbs.ft. (407 Nm) |
| CONTINUOUS:                 | 210 lbs.ft. (285 Nm) |
| <b>MAX HP (@ 1,000 RPM)</b> |                      |
| INTERMITTENT:               | 57 HP (43 kW)        |
| CONTINUOUS:                 | 40 HP (30 kW)        |
| <b>APPROX. WEIGHT</b>       | 47 lbs. (21.3 Kg.)   |

## CS24/25 SERIES



- Engaged by a direct-mount solenoid, which activates an internal, wet-clutch pack
- Patented, Muncie Power drag brake prevents shaft rotation in "off" mode

|                             |                      |
|-----------------------------|----------------------|
| <b>MAX TORQUE</b>           |                      |
| INTERMITTENT:               | 325 lbs.ft. (440 Nm) |
| CONTINUOUS:                 | 228 lbs.ft. (308 Nm) |
| <b>MAX HP (@ 1,000 RPM)</b> |                      |
| INTERMITTENT:               | 62 HP (46.2 kW)      |
| CONTINUOUS:                 | 43 HP (32.0 kW)      |
| <b>APPROX. WEIGHT</b>       | 52 lbs. (23.6 Kg.)   |

## TITAN™ MC1 SERIES

Available with the Muncie Start™

- A medium-duty, clutch shift power take-off replacing the CS24/25 and HS24 Series
- The Titan MC1 power take-off has raised the bar on the life expectancy and durability of truck-mounted PTOs

|  |                      |
|--|----------------------|
| <b>MAX TORQUE</b><br>INTER/CONTINUOUS:           | 415 lbs.ft. (563 Nm) |
| <b>MAX HP (@ 1,000 RPM)</b><br>INTER/CONTINUOUS: | 79 HP (59 kW)        |
| <b>APPROX. WEIGHT</b>                            | 47.2 lbs. (21.4 Kg.) |



## L SERIES

- All cast iron construction with 4 ports and roller bearing design
- Bi-rotational feature helps reduce inventory requirements

|                                 |                                   |
|---------------------------------|-----------------------------------|
| <b>MAX OP. PRESSURE</b>         | 3,000-2,500 PSI (207-172 BAR)     |
| <b>FLOW RATE (@ 1,000 RPM)*</b> | 13.8-30.3 GPM (53-114 LPM)        |
| <b>DISPLACEMENT</b>             | 3.18-7.01 cu.in. (52.1-114.9 cc.) |
| <b>APPROX. WEIGHT</b>           | 30.9-51.0 lbs. (18.1-23.2 Kg.)    |



## W SERIES

- Provides 8 displacements to cover lower flow rates, higher pressure requirements
- Bi-rotational, 4-port design is standard with speeds up to 3,600 RPM

|                                 |                                  |
|---------------------------------|----------------------------------|
| <b>MAX OP. PRESSURE</b>         | 4,350-3,000 PSI (300-210 BAR)    |
| <b>FLOW RATE (@ 1,000 RPM)*</b> | 6.3-25.4 GPM (23.9-96.2 LPM)     |
| <b>DISPLACEMENT</b>             | 1.45-4.87 cu.in. (23.9-79.8 cc.) |
| <b>APPROX. WEIGHT</b>           | 40.8-50.7 lbs. (18.5-23.0 Kg.)   |



## X SERIES

- Provides 9 displacements to cover medium to heavy flow, high-pressure requirements
- Bi-rotational, 4-port design is standard with speeds up to 3,000 RPM

|                                 |                                 |
|---------------------------------|---------------------------------|
| <b>MAX OP. PRESSURE</b>         | 4,350-2,250 PSI (300-155 BAR)   |
| <b>FLOW RATE (@ 1,000 RPM)*</b> | 13.8-36.5 GPM (51.2-138.2 LPM)  |
| <b>DISPLACEMENT</b>             | 3.18-8.43 cu.in. (52.1-138 cc.) |
| <b>APPROX. WEIGHT</b>           | 52.9-67.0 lbs. (24.0-30.4 Kg.)  |



## E SERIES DUMP

- Standard equipment for tandem, tri-axle dumps and dump trailers with high-volume cylinders
- EH model available for larger ports
- 2- or 3-line system options available

|  |  |
|--|--|
| <b>MAX OP. PRESSURE</b><br>E and EH Series:                | 2,500 PSI (173 BAR)  |
| <b>FLOW RATE (@ 1,000 RPM)*</b><br>E Series:<br>EH Series: | 22-5-27.6 GPM (85.2-104.5 LPM)<br>21.4-28.6 GPM (81.0-108.3 LPM)       |
| <b>DISPLACEMENT</b><br>E Series:<br>EH Series:             | 5.20-6.37 cu.in. (85.2-104.4 cc.)<br>4.95-6.60 cu.in. (81.1-106.0 cc.) |
| <b>APPROX. WEIGHT</b><br>E Series:<br>EH Series:           | 67-69 lbs. (30.4-31.3 Kg.)<br>68-70 lbs. (30.8-31.7 Kg.)               |



\* Flow rates are theoretical.

## DUMP TRUCKS (CONTINUED)



### Z SERIES

- Pump assemblies custom built for replacement or new installation requirements
- Cast iron construction available in both roller bearing and bushing designs with a wide variety of displacements within each product family
- Industry-standard shafts and port options are available

#### MAX OP. PRESSURE

|                 |                               |
|-----------------|-------------------------------|
| Roller Bearing: | 3,000-2,500 PSI (207-172 BAR) |
| Bushing Series: | 3,500-900 PSI (241-62 BAR)    |

#### FLOW RATE (@ 1,000 RPM)\*

|                 |                                 |
|-----------------|---------------------------------|
| Roller Bearing: | 4.3-53.2 GPM (18.3-201.4 LPM)** |
| Bushing Series: | 2.0-39.0 GPM (7.6-147.6 LPM)**  |

#### DISPLACEMENT

|                 |                                    |
|-----------------|------------------------------------|
| Roller Bearing: | 0.99-12.30 cu.in. (16.2-201.6 cc.) |
| Bushing Series: | 0.47-9.00 cu.in. (7.7-147.5 cc.)   |

#### APPROX. WEIGHT

|                          |                             |
|--------------------------|-----------------------------|
| Roller Bearing - Single: | 31-92 lbs. (14.1-47.73 Kg.) |
| Roller Bearing - Tandem: | 25-79 lbs. (13.2-35.8 Kg.)  |
| Bushing Series - Single: | 15.5-71 lbs. (7.0-32.2 Kg.) |
| Bushing Series - Tandem: | 15.5-72 lbs. (7.0-32.7 Kg.) |

\* Flow rates are theoretical. \*\* Flow rate per outlet.



### METAL UPRIGHT

- Designed for hardworking, continuous-duty applications
- Available in aluminium for lighter weight or steel for higher heat applications
- Easy installation and accessibility

#### VOLUMES

|                     |                               |
|---------------------|-------------------------------|
| Aluminum (3 sizes): | 50-100 gal. (189.3-1,432.9 L) |
| Steel (4 sizes):    | 50-100 gal. (189.3-1,432.9 L) |

#### DIMENSIONS

|           |        |
|-----------|--------|
| Aluminum: | Varies |
| Steel:    | Varies |

#### APPROX. WEIGHT

|           |                               |
|-----------|-------------------------------|
| Aluminum: | 77-130 lbs. (34.9-59.0 Kg.)   |
| Steel:    | 150-248 lbs. (68.0-128.8 Kg.) |



### STEEL BOX

- Offered in a large variety of sizes from compact to mid-size
- Features multiple return ports, optional, tank-top filter and sensors
- Designed for continuous-duty applications that generate significant amounts of heat

#### VOLUMES

|                      |                          |
|----------------------|--------------------------|
| Available (7 sizes): | 7-40 gal. (26.5-151.4 L) |
|----------------------|--------------------------|

#### DIMENSIONS

Varies

#### APPROX. WEIGHT

40-126 lbs. (18.1-57.2 Kg.)

## METAL ROUND

- Designed for hardworking, continuous-duty applications
- Available in aluminum for lighter weight or steel for higher heat applications
- Offered in a wide variety of sizes

### VOLUMES

|                     |                              |
|---------------------|------------------------------|
| Aluminum (5 sizes): | 25-100 gal. (94.6-1,432.9 L) |
| Steel (5 sizes):    | 25-100 gal. (94.6-1,432.9 L) |

### DIMENSIONS

|           |                                  |
|-----------|----------------------------------|
| Aluminum: | 24 in. dia. x 15 in.-51 in. Long |
| Steel:    | 24 in. dia. x 15 in.-51 in. Long |

### APPROX. WEIGHT

|           |                               |
|-----------|-------------------------------|
| Aluminum: | 73-180 lbs. (33.1-81.7 Kg.)   |
| Steel:    | 101-226 lbs. (45.8-102.5 Kg.) |



## PIN-PIN

- One of the lightest cylinders on the market, which translates to greater payloads, less oil consumption and faster dumping
- A self-bleeding design for easier installation
- Single head nut with no further adjustments needed
- Chrome-plated final stage to extend product life
- Low maintenance requirements offer many years of top performance without additional expenses

### MAX PRESSURE

2,900 PSI (200 BAR)

### NOMINAL BORE

5 in. Model: 2 Sizes  
6 in. Model: 7 Sizes  
7 in. Model: 14 Sizes  
8 in. Model: 14 Sizes  
9 in. Model: 1 Size

### STROKE

84-285 in. (2,182-5,613 mm)

### MAX LIFTING CAPACITY RANGE\*

22.6-87.0 ton (201-773 kN)



\* Lifting capacity range based on 2,750 PSI (189.7 BAR).

## TRUNNION

- Mounting style allows for increased capacity in the dump body through a significant reduction or elimination of the dog house
- Available in both 3- and 4-stage versions
- Strict-machining tolerances, solid stop contact faces and larger overlap between stages make Muncie Power's trunnion mount cylinders some of the strongest and most stable cylinders on the market

### MAX PRESSURE\*

2,900 or 3,200 PSI  
(200 or 220 BAR)

### NOMINAL BORE

3.5 in. Model: 2 Sizes  
4.5 in. Model: 3 Sizes  
5.5 in. Model: 3 Sizes  
6.5 in. Model: 4 Sizes  
7.5 in. Model: 2 Sizes

### STROKE

82-194 in. (2,082-4,928 mm)

### MAX LIFTING CAPACITY\*\*

10.9-50.0 ton (97-445 kN)



\* Max pressure depends on cylinder model. \*\* Lifting capacity range based on 2,750 PSI (189.7 BAR).



# LOGGER TRUCKS

## 82 SERIES



- Cast iron housing, lever or air shift and optional, single- or dual-pump mounts
- Designed for use with high-torque mechanical equipment

|                             |               |                      |
|-----------------------------|---------------|----------------------|
| <b>MAX TORQUE</b>           | INTERMITTENT: | 500 lbs.ft. (678 Nm) |
|                             | CONTINUOUS:   | 350 lbs.ft. (475 Nm) |
| <b>MAX HP (@ 1,000 RPM)</b> | INTERMITTENT: | 95 HP (71 kW)        |
|                             | CONTINUOUS:   | 67 HP (50 kW)        |
| <b>APPROX. WEIGHT</b>       |               | 85 lbs. (38.6 Kg.)   |

## L SERIES



- All cast iron construction with 4 ports and roller bearing design
- Bi-rotational feature helps reduce inventory requirements

|                                 |                                   |
|---------------------------------|-----------------------------------|
| <b>MAX OP. PRESSURE</b>         | 3,000-2,500 PSI (207-172 BAR)     |
| <b>FLOW RATE (@ 1,000 RPM)*</b> | 13.8-30.3 GPM (53-114 LPM)        |
| <b>DISPLACEMENT</b>             | 3.18-7.01 cu.in. (52.1-114.9 cc.) |
| <b>APPROX. WEIGHT</b>           | 30.9-51.0 lbs. (18.1-23.2 Kg.)    |

## W SERIES



- Provides 8 displacements to cover lower flow rates, higher pressure requirements
- Bi-rotational, 4-port design is standard with speeds up to 3,600 RPM

|                                 |                                  |
|---------------------------------|----------------------------------|
| <b>MAX OP. PRESSURE</b>         | 4,350-3,000 PSI (300-210 BAR)    |
| <b>FLOW RATE (@ 1,000 RPM)*</b> | 6.3-25.4 GPM (23.9-96.2 LPM)     |
| <b>DISPLACEMENT</b>             | 1.45-4.87 cu.in. (23.9-79.8 cc.) |
| <b>APPROX. WEIGHT</b>           | 40.8-50.7 lbs. (18.5-23.0 Kg.)   |

## X SERIES



- Provides 9 displacements to cover medium to heavy flow, high-pressure requirements
- Bi-rotational, 4-port design is standard with speeds up to 3,000 RPM

|                                 |                                 |
|---------------------------------|---------------------------------|
| <b>MAX OP. PRESSURE</b>         | 4,350-2,250 PSI (300-155 BAR)   |
| <b>FLOW RATE (@ 1,000 RPM)*</b> | 13.8-36.5 GPM (51.2-138.2 LPM)  |
| <b>DISPLACEMENT</b>             | 3.18-8.43 cu.in. (52.1-138 cc.) |
| <b>APPROX. WEIGHT</b>           | 52.9-67.0 lbs. (24.0-30.4 Kg.)  |

\* Flow rates are theoretical.



## PKS1 TANDEM

The TSPKS1 Tandem pump is available in the 13/13 and 17/17 model configurations at 13 and 17 GPM at 1,000 RPM per section.



## Z SERIES

- Pump assemblies custom built for replacement or new installation requirements
- Cast iron construction available in both roller bearing and bushing designs with a wide variety of displacements within each product family
- Industry-standard shafts and port options are available

### MAX OP. PRESSURE

|                 |                               |
|-----------------|-------------------------------|
| Roller Bearing: | 3,000-2,500 PSI (207-172 BAR) |
| Bushing Series: | 3,500-900 PSI (241-62 BAR)    |

### FLOW RATE (@ 1,000 RPM)\*

|                 |                                 |
|-----------------|---------------------------------|
| Roller Bearing: | 4.3-53.2 GPM (18.3-201.4 LPM)** |
| Bushing Series: | 2.0-39.0 GPM (7.6-147.6 LPM)**  |

### DISPLACEMENT

|                 |                                    |
|-----------------|------------------------------------|
| Roller Bearing: | 0.99-12.30 cu.in. (16.2-201.6 cc.) |
| Bushing Series: | 0.47-9.00 cu.in. (7.7-147.5 cc.)   |

### APPROX. WEIGHT

|                          |                             |
|--------------------------|-----------------------------|
| Roller Bearing - Single: | 31-92 lbs. (14.1-47.73 Kg.) |
| Roller Bearing - Tandem: | 25-79 lbs. (13.2-35.8 Kg.)  |
| Bushing Series - Single: | 15.5-71 lbs. (7.0-32.2 Kg.) |
| Bushing Series - Tandem: | 15.5-72 lbs. (7.0-32.7 Kg.) |



\* Flow rates are theoretical. \*\* Flow rate per outlet.

## V130 SERIES

- Internal, oil-core design allows for higher flow rates and low pressure drops in a compact package
- Tight tolerances and precision machining keep internal, spool leakages low

### FLOW RATE

|          |                  |
|----------|------------------|
| Nominal: | 34 GPM (130 LPM) |
| Maximum: | 55 GPM (208 LPM) |

### MAX PRESSURE

|                |                     |
|----------------|---------------------|
| 1-3 Sections:  | 5,440 PSI (375 BAR) |
| 4-6 Sections:  | 5,075 PSI (350 BAR) |
| 7-10 Sections: | 4,710 PSI (325 BAR) |

### MAX BACK PRESSURE

365 PSI (25 BAR)



## V250 SERIES

- Built to withstand extreme applications with high-pressure capabilities and high flow rates
- Work-port, relief valves, anti-cavitation valves, combination relief/anti-cavitation valves and pilot-operated relief valves available

### FLOW RATE

|          |                  |
|----------|------------------|
| Nominal: | 67 GPM (250 LPM) |
| Maximum: | 75 GPM (280 LPM) |

### MAX PRESSURE

4,000 PSI (275 BAR)

### MAX BACK PRESSURE

290 PSI (20 BAR)





# SERVICE TRUCKS



## TG SERIES

- Versatile PTO with 10 speed ratios for all popular transmissions
- Lightweight, reduced noise and superior heat dissipation

|                             |                      |
|-----------------------------|----------------------|
| <b>MAX TORQUE</b>           |                      |
| INTERMITTENT:               | 285 lbs.ft. (386 Nm) |
| CONTINUOUS:                 | 200 lbs.ft. (270 Nm) |
| <b>MAX HP (@ 1,000 RPM)</b> |                      |
| INTERMITTENT:               | 54 HP (40 kW)        |
| CONTINUOUS:                 | 38 HP (28 kW)        |
| <b>APPROX. WEIGHT</b>       | 22 lbs. (10.0 Kg.)   |

## CS6/8 SERIES



- Designed for Allison 1000 and 2000 Series automatic transmissions as well as many current manual transmissions offering direct-mount pump options
- Patented, Muncie Power drag break prevents shaft rotation in "off" mode
- Direct-mount flanges with ability to rotate allow the pump to be positioned for maximum clearance

|                             |                      |
|-----------------------------|----------------------|
| <b>MAX TORQUE</b>           |                      |
| INTERMITTENT:               | 300 lbs.ft. (407 Nm) |
| CONTINUOUS:                 | 210 lbs.ft. (285 Nm) |
| <b>MAX HP (@ 1,000 RPM)</b> |                      |
| INTERMITTENT:               | 57 HP (43 kW)        |
| CONTINUOUS:                 | 40 HP (30 kW)        |
| <b>APPROX. WEIGHT</b>       | 47 lbs. (21.3 Kg.)   |

## CS24/25 SERIES



- Engaged by a direct-mount solenoid, which activates an internal, wet-clutch pack
- Patented, Muncie Power drag brake prevents shaft rotation in "off" mode

|                             |                      |
|-----------------------------|----------------------|
| <b>MAX TORQUE</b>           |                      |
| INTERMITTENT:               | 325 lbs.ft. (440 Nm) |
| CONTINUOUS:                 | 228 lbs.ft. (308 Nm) |
| <b>MAX HP (@ 1,000 RPM)</b> |                      |
| INTERMITTENT:               | 62 HP (46.2 kW)      |
| CONTINUOUS:                 | 43 HP (32.0 kW)      |
| <b>APPROX. WEIGHT</b>       | 52 lbs. (23.6 Kg.)   |

## TITAN™ MC1 SERIES

*Available with the Muncie Start™*



- A medium-duty, clutch shift power take-off replacing the CS24/25 and HS24 Series
- The Titan MC1 power take-off has raised the bar on the life expectancy and durability of truck-mounted PTOs

|                             |                      |
|-----------------------------|----------------------|
| <b>MAX TORQUE</b>           |                      |
| INTER/CONTINUOUS:           | 415 lbs.ft. (563 Nm) |
| <b>MAX HP (@ 1,000 RPM)</b> |                      |
| INTER/CONTINUOUS:           | 79 HP (59 kW)        |
| <b>APPROX. WEIGHT</b>       | 47.2 lbs. (21.4 Kg.) |

## K SERIES

- All cast iron construction with 4 ports and roller bearing design
- Designed to meet the application needs of either a pump or a motor

|                                 |                                  |
|---------------------------------|----------------------------------|
| <b>MAX OP. PRESSURE</b>         | 3,000-2,500 PSI (207-172 BAR)    |
| <b>FLOW RATE (@ 1,000 RPM)*</b> | 4.2-17.1 GPM (15-64 LPM)         |
| <b>DISPLACEMENT</b>             | 0.98-3.94 cu.in. (16.1-64.6 cc.) |
| <b>APPROX. WEIGHT</b>           | 26.5-34.1 lbs. (12.1-15.5 Kg.)   |



## L SERIES

- All cast iron construction with 4 ports and roller bearing design
- Bi-rotational feature helps reduce inventory requirements

|                                 |                                   |
|---------------------------------|-----------------------------------|
| <b>MAX OP. PRESSURE</b>         | 3,000-2,500 PSI (207-172 BAR)     |
| <b>FLOW RATE (@ 1,000 RPM)*</b> | 13.8-30.3 GPM (53-114 LPM)        |
| <b>DISPLACEMENT</b>             | 3.18-7.01 cu.in. (52.1-114.9 cc.) |
| <b>APPROX. WEIGHT</b>           | 30.9-51.0 lbs. (18.1-23.2 Kg.)    |

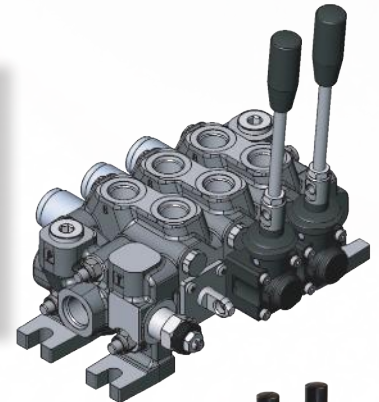


\* Flow rates are theoretical.

## VO50 SERIES

- Small size, lightweight valve with versatile design configurations
- Available with 7, standard, back-cap options and 5, standard control options

|                          |                     |
|--------------------------|---------------------|
| <b>FLOW RATE</b>         |                     |
| Nominal:                 | 13 GPM (50 LPM)     |
| Maximum:                 | 16 GPM (60 LPM)     |
| <b>MAX PRESSURE</b>      |                     |
| 1-3 Sections:            | 5,440 PSI (375 BAR) |
| 4-6 Sections:            | 5,075 PSI (350 BAR) |
| 7-10 Sections:           | 4,710 PSI (325 BAR) |
| <b>MAX BACK PRESSURE</b> | 365 PSI (25 BAR)    |



## VO80 SERIES

- Constructed with high-grade iron castings and nickel-plated spools for use in high-pressure applications
- Load checks and inlet relief valve are standard

|                          |                     |
|--------------------------|---------------------|
| <b>FLOW RATE</b>         |                     |
| Nominal:                 | 21 GPM (80 LPM)     |
| Maximum:                 | 30 GPM (114 LPM)    |
| <b>MAX PRESSURE</b>      |                     |
| 1-3 Sections:            | 5,075 PSI (350 BAR) |
| 4-6 Sections:            | 4,650 PSI (320 BAR) |
| 7-10 Sections:           | 4,350 PSI (300 BAR) |
| <b>MAX BACK PRESSURE</b> | 365 PSI (25 BAR)    |



## V130 SERIES

- Internal, oil-core design allows for higher flow rates and low pressure drops in a compact package
- Tight tolerances and precision machining keep internal, spool leakages low

|                          |                     |
|--------------------------|---------------------|
| <b>FLOW RATE</b>         |                     |
| Nominal:                 | 34 GPM (130 LPM)    |
| Maximum:                 | 55 GPM (208 LPM)    |
| <b>MAX PRESSURE</b>      |                     |
| 1-3 Sections:            | 5,440 PSI (375 BAR) |
| 4-6 Sections:            | 5,075 PSI (350 BAR) |
| 7-10 Sections:           | 4,710 PSI (325 BAR) |
| <b>MAX BACK PRESSURE</b> | 365 PSI (25 BAR)    |





## WATER TRUCKS



### TG SERIES

- Versatile PTO with 10 speed ratios for all popular transmissions
- Lightweight, reduced noise and superior heat dissipation

|                             |                      |
|-----------------------------|----------------------|
| <b>MAX TORQUE</b>           |                      |
| INTERMITTENT:               | 285 lbs.ft. (386 Nm) |
| CONTINUOUS:                 | 200 lbs.ft. (270 Nm) |
| <b>MAX HP (@ 1,000 RPM)</b> |                      |
| INTERMITTENT:               | 54 HP (40 kW)        |
| CONTINUOUS:                 | 38 HP (28 kW)        |
| <b>APPROX. WEIGHT</b>       | 22 lbs. (10.0 Kg.)   |



### CS6/8 SERIES

- Designed for Allison 1000 and 2000 Series automatic transmissions as well as many current manual transmissions offering direct-mount pump options
- Patented, Muncie Power drag break prevents shaft rotation in "off" mode
- Direct-mount flanges with ability to rotate allow the pump to be positioned for maximum clearance

|                             |                      |
|-----------------------------|----------------------|
| <b>MAX TORQUE</b>           |                      |
| INTERMITTENT:               | 300 lbs.ft. (407 Nm) |
| CONTINUOUS:                 | 210 lbs.ft. (285 Nm) |
| <b>MAX HP (@ 1,000 RPM)</b> |                      |
| INTERMITTENT:               | 57 HP (43 kW)        |
| CONTINUOUS:                 | 40 HP (30 kW)        |
| <b>APPROX. WEIGHT</b>       | 47 lbs. (21.3 Kg.)   |

## K SERIES

- All cast iron construction with 4 ports and roller bearing design
- Designed to meet the application needs of either a pump or a motor

|                                 |                                  |
|---------------------------------|----------------------------------|
| <b>MAX OP. PRESSURE</b>         | 3,000-2,500 PSI (207-172 BAR)    |
| <b>FLOW RATE (@ 1,000 RPM)*</b> | 4.2-17.1 GPM (15-64 LPM)         |
| <b>DISPLACEMENT</b>             | 0.98-3.94 cu.in. (16.1-64.6 cc.) |
| <b>APPROX. WEIGHT</b>           | 26.5-34.1 lbs. (12.1-15.5 Kg.)   |



## L SERIES

- All cast iron construction with 4 ports and roller bearing design
- Bi-rotational feature helps reduce inventory requirements

|                                 |                                   |
|---------------------------------|-----------------------------------|
| <b>MAX OP. PRESSURE</b>         | 3,000-2,500 PSI (207-172 BAR)     |
| <b>FLOW RATE (@ 1,000 RPM)*</b> | 13.8-30.3 GPM (53-114 LPM)        |
| <b>DISPLACEMENT</b>             | 3.18-7.01 cu.in. (52.1-114.9 cc.) |
| <b>APPROX. WEIGHT</b>           | 30.9-51.0 lbs. (18.1-23.2 Kg.)    |



\* Flow rates are theoretical.

## METAL UPRIGHT

- Designed for hardworking, continuous-duty applications
- Available in aluminium for lighter weight or steel for higher heat applications
- Easy installation and accessibility

|                       |                               |
|-----------------------|-------------------------------|
| <b>VOLUMES</b>        |                               |
| Aluminum (3 sizes):   | 50-100 gal. (189.3-1,432.9 L) |
| Steel (4 sizes):      | 50-100 gal. (189.3-1,432.9 L) |
| <b>DIMENSIONS</b>     |                               |
| Aluminum:             | Varies                        |
| Steel:                | Varies                        |
| <b>APPROX. WEIGHT</b> |                               |
| Aluminum:             | 77-130 lbs. (34.9-59.0 Kg.)   |
| Steel:                | 150-248 lbs. (68.0-128.8 Kg.) |



## METAL ROUND

- Designed for hardworking, continuous-duty applications
- Available in aluminium for lighter weight or steel for higher heat applications
- Offered in a wide variety of sizes

|                       |                                  |
|-----------------------|----------------------------------|
| <b>VOLUMES</b>        |                                  |
| Aluminum (5 sizes):   | 25-100 gal. (94.6-1,432.9 L)     |
| Steel (5 sizes):      | 25-100 gal. (94.6-1,432.9 L)     |
| <b>DIMENSIONS</b>     |                                  |
| Aluminum:             | 24 in. dia. x 15 in.-51 in. Long |
| Steel:                | 24 in. dia. x 15 in.-51 in. Long |
| <b>APPROX. WEIGHT</b> |                                  |
| Aluminum:             | 73-180 lbs. (33.1-81.7 Kg.)      |
| Steel:                | 101-226 lbs. (45.8-102.5 Kg.)    |





## LOWBOY TRUCKS



### TG SERIES

- Versatile PTO with 10 speed ratios for all popular transmissions
- Lightweight, reduced noise and superior heat dissipation

|                             |                      |
|-----------------------------|----------------------|
| <b>MAX TORQUE</b>           |                      |
| INTERMITTENT:               | 285 lbs.ft. (386 Nm) |
| CONTINUOUS:                 | 200 lbs.ft. (270 Nm) |
| <b>MAX HP (@ 1,000 RPM)</b> |                      |
| INTERMITTENT:               | 54 HP (40 kW)        |
| CONTINUOUS:                 | 38 HP (28 kW)        |
| <b>APPROX. WEIGHT</b>       | 22 lbs. (10.0 Kg.)   |



### CS6/8 SERIES

- Designed for Allison 1000 and 2000 Series automatic transmissions as well as many current manual transmissions offering direct-mount pump options
- Patented, Muncie Power drag break prevents shaft rotation in "off" mode
- Direct-mount flanges with ability to rotate allow the pump to be positioned for maximum clearance

|                             |                      |
|-----------------------------|----------------------|
| <b>MAX TORQUE</b>           |                      |
| INTERMITTENT:               | 300 lbs.ft. (407 Nm) |
| CONTINUOUS:                 | 210 lbs.ft. (285 Nm) |
| <b>MAX HP (@ 1,000 RPM)</b> |                      |
| INTERMITTENT:               | 57 HP (43 kW)        |
| CONTINUOUS:                 | 40 HP (30 kW)        |
| <b>APPROX. WEIGHT</b>       | 47 lbs. (21.3 Kg.)   |

## L SERIES

- All cast iron construction with 4 ports and roller bearing design
- Bi-rotational feature helps reduce inventory requirements

|                                 |                                   |
|---------------------------------|-----------------------------------|
| <b>MAX OP. PRESSURE</b>         | 3,000-2,500 PSI (207-172 BAR)     |
| <b>FLOW RATE (@ 1,000 RPM)*</b> | 13.8-30.3 GPM (53-114 LPM)        |
| <b>DISPLACEMENT</b>             | 3.18-7.01 cu.in. (52.1-114.9 cc.) |
| <b>APPROX. WEIGHT</b>           | 30.9-51.0 lbs. (18.1-23.2 Kg.)    |

\* Flow rates are theoretical.



## V080 SERIES

- Constructed with high-grade iron castings and nickel-plated spools for use in high-pressure applications
- Load checks and inlet relief valve are standard

|                     |                          |                     |
|---------------------|--------------------------|---------------------|
| <b>FLOW RATE</b>    | Nominal:                 | 21 GPM (80 LPM)     |
|                     | Maximum:                 | 30 GPM (114 LPM)    |
| <b>MAX PRESSURE</b> | 1-3 Sections:            | 5,075 PSI (350 BAR) |
|                     | 4-6 Sections:            | 4,650 PSI (320 BAR) |
|                     | 7-10 Sections:           | 4,350 PSI (300 BAR) |
|                     | <b>MAX BACK PRESSURE</b> | 365 PSI (25 BAR)    |



## V130 SERIES

- Internal, oil-core design allows for higher flow rates and low pressure drops in a compact package
- Tight tolerances and precision machining keep internal, spool leakages low

|                     |                          |                     |
|---------------------|--------------------------|---------------------|
| <b>FLOW RATE</b>    | Nominal:                 | 34 GPM (130 LPM)    |
|                     | Maximum:                 | 55 GPM (208 LPM)    |
| <b>MAX PRESSURE</b> | 1-3 Sections:            | 5,440 PSI (375 BAR) |
|                     | 4-6 Sections:            | 5,075 PSI (350 BAR) |
|                     | 7-10 Sections:           | 4,710 PSI (325 BAR) |
|                     | <b>MAX BACK PRESSURE</b> | 365 PSI (25 BAR)    |



## V250 SERIES

- Built to withstand extreme applications with high-pressure capabilities and high flow rates
- Work-port, relief valves, anti-cavitation valves, combination relief/anti-cavitation valves and pilot-operated relief valves available

|                          |                     |                  |
|--------------------------|---------------------|------------------|
| <b>FLOW RATE</b>         | Nominal:            | 67 GPM (250 LPM) |
|                          | Maximum:            | 75 GPM (280 LPM) |
| <b>MAX PRESSURE</b>      | 4,000 PSI (275 BAR) |                  |
| <b>MAX BACK PRESSURE</b> | 290 PSI (20 BAR)    |                  |





With many years of combined experience, Muncie Power's team offers industry-leading customer service for its full line of products from power take-offs to hydraulic components.

### **Indiana**

*Corporate Headquarters  
Warehouse Distribution Center*  
Toll Free: 800-367-7867

### **California**

*Muncie Distribution Center*  
Phone 559-651-1401

### **Georgia**

*Warehouse and Distribution Center*  
Phone: 770-499-1847

### **Ohio**

*Mobile Power Center*  
Phone: 614-552-0318

### **Oklahoma**

*Manufacturing Division and Distribution Center*  
Phone: 918-838-0900

### **Pennsylvania**

*Mobile Power Center*  
Phone: 610-539-4430

### **Texas**

*Muncie Distribution Center*  
Phone: 713-674-5289

### **Virginia**

*Muncie Distribution Center*  
Phone: 804-275-6724



[www.munciepower.com](http://www.munciepower.com)