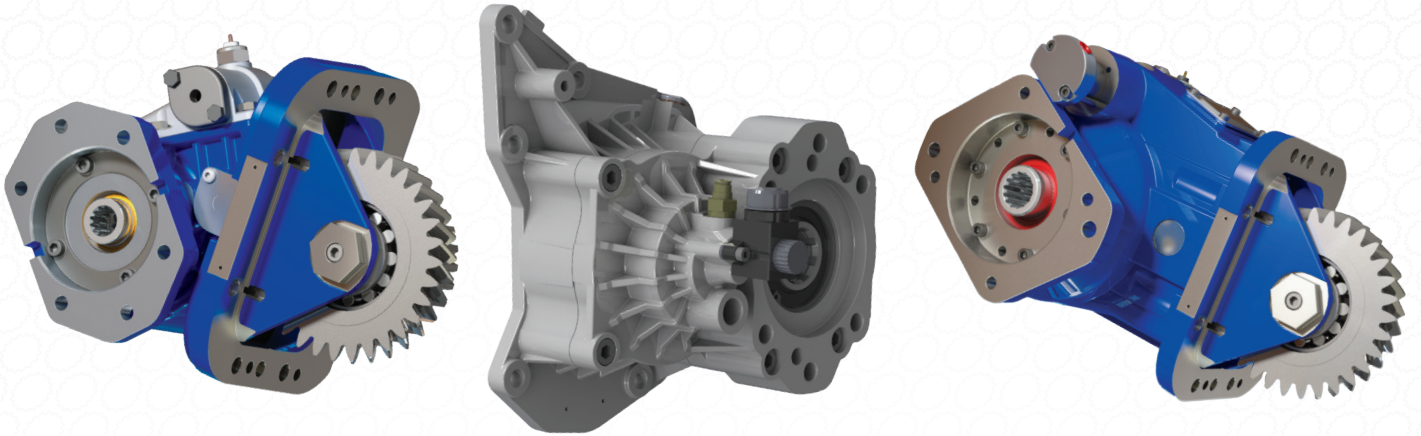


# POWER TAKE-OFFS & HYDRAULIC PUMPS

## DETROIT DT12 TRANSMISSION



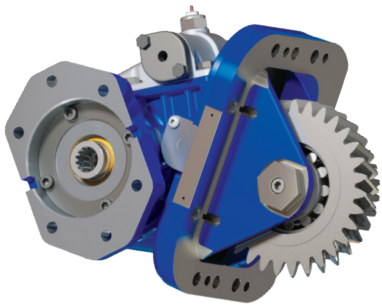
# POWER TAKE-OFFS

Muncie Power Products offers a diverse line of power take-offs for Detroit DT12 transmissions including bottom- and rear-mount options. For all PTO options, you must order the PTO prep package from the dealer for activation components.

The Detroit DT12 Overdrive models, commonly used on Western Star 49X trucks, provide the opportunity for dual PTO usage. An adapter gear is required when using our standard 8-bolt PTOs for the bottom PTO opening. The adapters are currently available for the DT-OV, DT12-OVX, and DT12-OHE Overdrive models. Selection of the proper adapter gear is required.

## MECHANICAL SHIFT—BOTTOM MOUNT

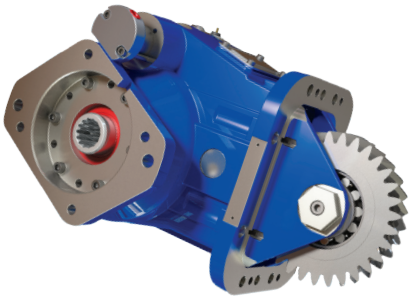
### TG8S-U68



- Versatile 8-bolt mechanical shift PTO
- Lightweight, bottom-mount PTO
- Requires adapter gear for use with DT12 transmission

<b>MAX TORQUE</b> INTERMITTENT:	285 lbs.ft. (386 Nm)
<b>MAX HP (@ 1,000 RPM)</b> INTERMITTENT:	54 HP (40 kW)
<b>APPROX. WEIGHT</b>	22 lbs. (10.0 Kg.)

### 828S-U68



- Heavy-duty 8-bolt mechanical shift PTO
- High torque bottom-mount PTO
- Requires adapter gear for use with DT12 transmission

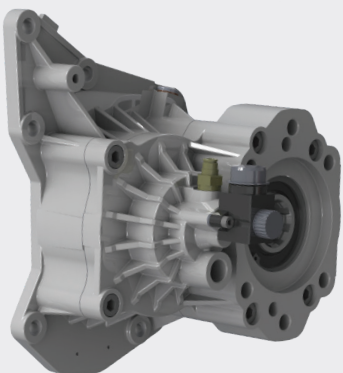
<b>MAX TORQUE</b> INTERMITTENT:	500 lbs.ft. (678 Nm)
<b>MAX HP (@ 1,000 RPM)</b> INTERMITTENT:	95 HP (71 kW)
<b>APPROX. WEIGHT</b>	85 lbs. (38.6 Kg.)

#### ADAPTER GEAR P/Ns

40TA6479	DT12-OHE, DT12-OV
40TA6480	DT12-OVX

## MECHANICAL SHIFT—REAR MOUNT

### P89



- Designed to fit the Detroit DT12 Series transmission in Freightliner, or Western Star Class 8 Cascadia trucks
- M1, M2, and M3 ratios

<b>MAX TORQUE</b> INTERMITTENT:	317 lbs.ft. (430 Nm)
<b>MAX HP (@ 1,000 RPM)</b> INTERMITTENT:	60 HP (45 kW)
<b>APPROX. WEIGHT</b>	23 lbs. (10.4 Kg.)

# TARGET MARKETS

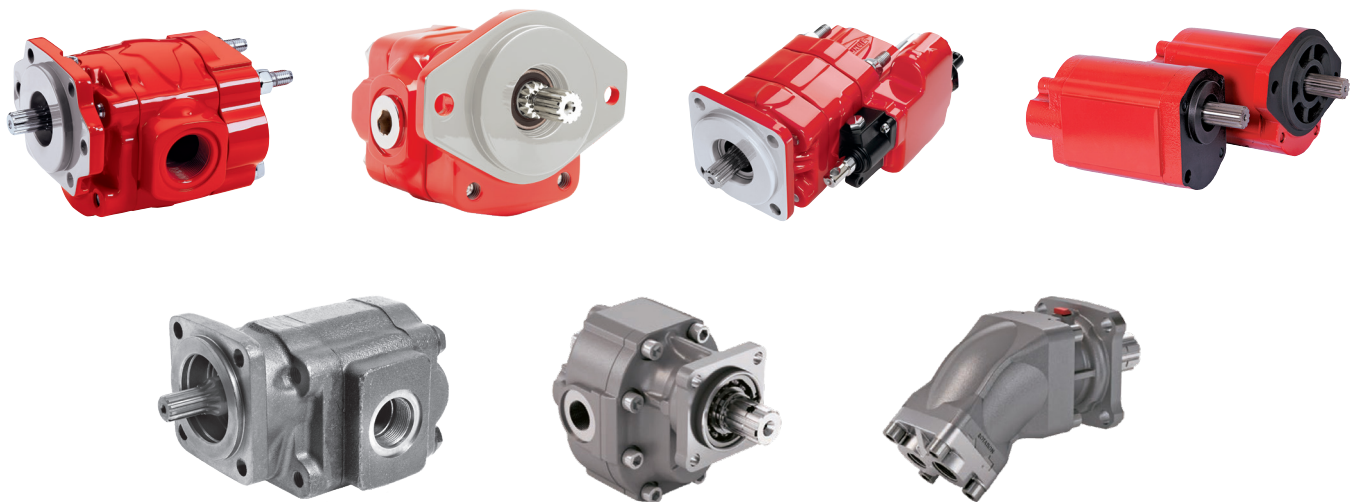
- Tow & Recovery
- Dump
- Snow & Ice
- Refuse
- Utility

## HYDRAULIC PUMPS

The TG and 82 Series PTOs are compatible with numerous Muncie Power pumps. Gear Dump/Host, and Piston pumps are all available in a wide variety of sizes and designs dependent on your application requirements. Muncie Power pumps are designed to improve system reliability.

### FEATURES

- All cast iron construction
- Numerous flow rates both high and low
- Bushing designs
- Wide selection of mounting flanges
- Roller bearing designs



The P89 Series Power Take-offs are only available with the SAE “BB” output or DIN 5462 options, limiting which pumps are available.

For more help identifying and configuring pumps that best fit your P89 Series PTO and your specific needs contact our Customer Service department.

Call 800-367-7867



*A Member of the Interpump Group*

MI21-02 (Rev. 12-24)

201 East Jackson Street, Muncie, Indiana 47305  
800-367-7867 • Fax: 765-284-6991 • [info@munciepower.com](mailto:info@munciepower.com)

Specifications are subject to change without notice. Visit [www.munciepower.com](http://www.munciepower.com)  
for warranties and literature. All rights reserved. © Muncie Power Products, Inc. (2021)