



## P58 SERIES

The P58 Series is an 8-bolt, clutch-shift power take-off designed for both the left and right side openings on the PACCAR TX8 8-speed transmission.

### KEY FEATURES

- Internally pressure lubricated bearings
- Pneumatically shifted clutch pack
- Compatible flange mounts
  - SAE B 2 & 4-bolt 7/8" - 13T Spline Shaft
  - DIN 5462
  - 1310 Companion Flange

# MODEL NUMBER CONSTRUCTION

**P58-Z11 10-XX 5 21 PX**

**PTO Type**

P58 — P58 Series

**Transmission Input Gear Option**

Z11 — PACCAR TX8

**Speed Ratio**

10 — .98:1

**Shift Types**

XX — Electric/Air w/o Activation Components

**Special Features**

PX — Standard (Driver's Side Install)

BX — Long Hose Kit (Passenger Side Install)

**Output Types**

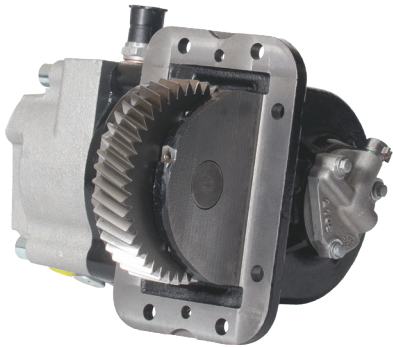
BB — SAE "B" 7/8"-13T, SAE "B" 2 & 4-Bolt

21 — DIN 5462

X3 — 1310 Companion Flange

**Assembly Arrangement**

5 — No Offset



## P58 SERIES

- PTO for the PACCAR TX8 transmissions
- Compatible with most common gear pumps
- 121% of engine speed

**MAX TORQUE**

INTERMITTENT/  
CONTINUOUS:

420 lbs.ft. (569 Nm)

**MAX HP (@ 1,000 RPM)**

INTERMITTENT/  
CONTINUOUS:

80 HP (60 kW)

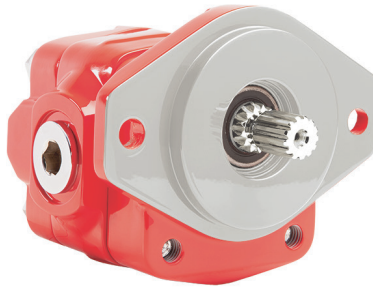
**APPROX. WEIGHT**

47 lbs. (21 Kg.)

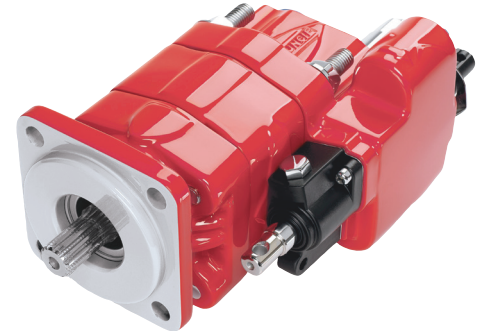
## COMPATIBLE PUMPS



**H SERIES**



**K SERIES**



**S SERIES**



A Member of the Interpump Group

MI22-04 (Rev. 01-23)

201 East Jackson Street, Muncie, Indiana 47305  
800-367-7867 • Fax: 765-284-6991 • info@munciepower.com

Specifications are subject to change without notice. Visit [www.munciepower.com](http://www.munciepower.com) for warranties and literature. All rights reserved. © Muncie Power Products, Inc. (2022)