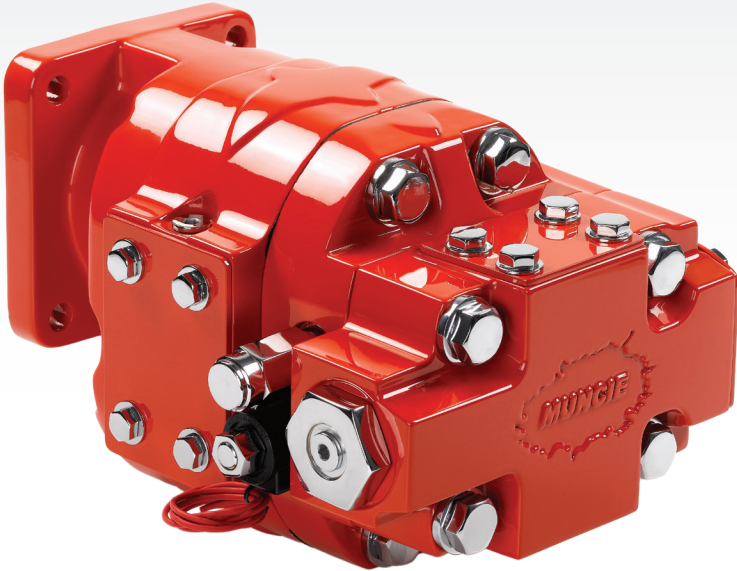


# INNOVATION ON-DEMAND

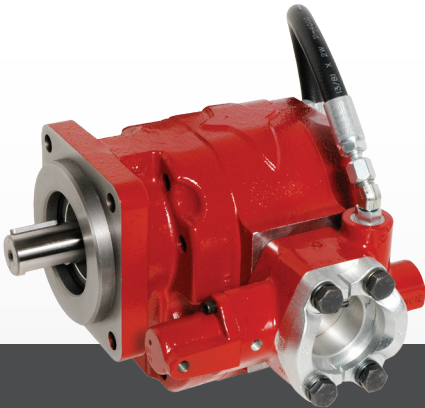
REFUSE PUMP SYSTEMS



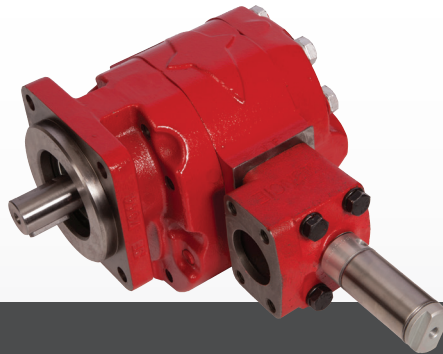


## REFUSE PUMPS

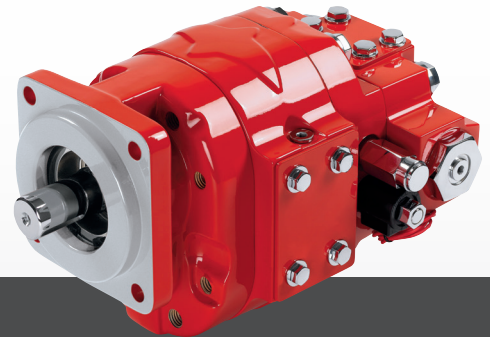
Experience hydraulic power on-demand with Muncie Power Products' line of refuse pumps. Muncie Power's line features the Optimum X Series, MLSM Series Live Pak and Powr-Pro and Power-Miser pump systems. These pumps are rated to pressures from 3000 to 4350 PSI and conserve fuel by minimizing horsepower draw in off mode. Designed for durable performance, Muncie Power's line of refuse pumps stands up to the challenge.



**POWR-PRO**  
DRY VALVE PUMP



**POWER-MISER**  
DRY VALVE PUMP



**MLSM**  
LIVE PAK PUMP

Powr-Pro is a dry valve pump systems designed primarily for refuse vehicles. Dry valve pump systems lower operating costs by drastically reducing horsepower draw in the off mode, thus saving fuel. With a butterfly style valve, the Powr-Pro is typically front-mounted and driven off of the engine crankshaft via a tubular shaft assembly. The Powr-Pro dry valves are air actuated.

Power-Miser are dry valve pump systems designed primarily for refuse vehicles. As a result of drastically reducing horsepower draw, dry valve pump systems lower operating costs in the off mode and save fuel. The Power-Miser utilizes a plunger-type dry valve that is typically front-mounted and driven off of the engine crankshaft via a tubular shaft assembly. Dry valves of the Power-Miser are air actuated.

The MLSM Series Live Pak pump system provides protection against hydraulic overspeed damage while allowing the driver to maintain full use of the hydraulic system on refuse vehicles. Its built-in flow limiter automatically redirects excess pump flow to reservoir when the pump is on. In the off mode full pump flow is directed to the reservoir, conserving power and fuel.

Displacement (Cu. In./Rev)	3.18 - 9.27
Max. Op. Pressure	3,000 PSI
Input Shaft Options	3

Brochure: MP15-38

Displacement (Cu. In./Rev)	3.18 - 9.27
Max. Op. Pressure	3,000 PSI
Input Shaft Options	3

Brochure: MP15-38

Displacement (Cu. In./Rev)	6.10 - 10.25
Max. Op. Pressure	3,000 PSI
Input Shaft Options	2

Brochure: MP15-37

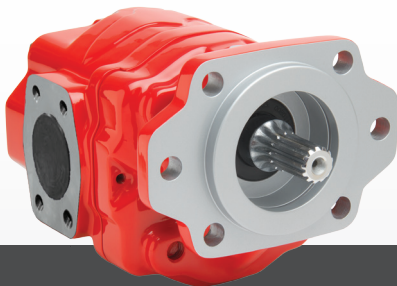
**DON'T WAIT. FIND THE SOLUTION THAT'S RIGHT FOR YOU TODAY.**



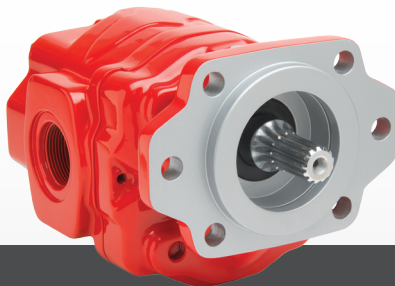
### INTERACTIVE PUMP DESIGNER

Visit our interactive specification tool and find the pump model that best suits your refuse truck application needs. Our pump designer tools allow you to select your pump type, in addition to your configuration options, to obtain a model number for easy ordering.

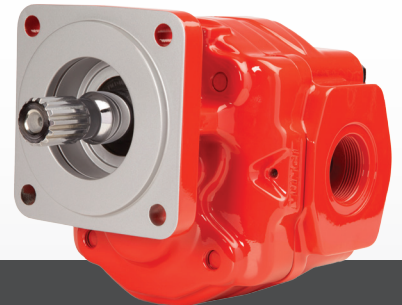
[www.munciepower.com/mpower](http://www.munciepower.com/mpower)



**OPTIMUM X SERIES  
LIVE FLOOR PUMP**



**OPTIMUM X SERIES  
GEAR PUMP**



**OPTIMUM Y SERIES  
GEAR PUMP**

Featuring the innovative OPTI-GRIP technology, the Optimum X Series exemplifies strength, endurance and rigidity making for long lasting units even in the most extreme conditions. The Optimum X series is available with a live-floor option. The Optimum X series is available with the correct displacement, port sizes and configurations for live floor applications.

The X Series is the middle range of the Optimum line, providing nine displacements to cover medium to heavy flow and high pressure requirements. The Optimum pumps feature Muncie's OPTI-GRIP technology which allows for higher pressure capabilities and a more rigid pump design for long life and maintained performance.

The Y Series is the largest range in the Optimum line providing nine displacements to cover heavy duty, high demand applications. The Optimum pumps feature Muncie's OPTI-GRIP technology which allows for higher pressure capabilities and a more rigid pump design for long life and maintained performance.

Displacement (Cu. In./Rev)	6.35
Max. Op. Pressure	4,350 PSI
Input Shaft Options	5

Brochure: MP15-39

Displacement (Cu. In./Rev)	3.18 - 8.43
Max. Op. Pressure	4,350 PSI
Input Shaft Options	5

Brochure: MP15-14

Displacement (Cu. In./Rev)	5.12 - 14.39
Max. Op. Pressure	4,000 PSI
Input Shaft Options	3

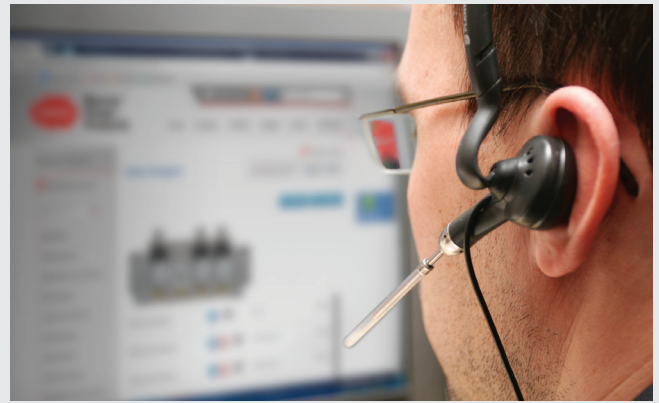
Brochure: MP15-15



# WE BUILD TRUST.

At Muncie, we understand  
that we're building much more  
than hydraulic components.

**We are building trust.**



## **NEED HELP?**

Please contact our customer service team for product related questions, or visit online for additional product information, literature, stocking locations and more.

**800.367.7867** [www.munciepower.com](http://www.munciepower.com)

**POWER TAKE-OFFS - PUMPS - CYLINDERS - VALVES - RESERVOIRS - HOSES - FITTINGS - FILTERS**



**MUNCIE POWER PRODUCTS**  
A MEMBER OF THE INTERPUMP GROUP

201 EAST JACKSON STREET - POST OFFICE BOX 548 - MUNCIE, INDIANA 47308 USA - 800.367.7867 - WWW.MUNCIEPOWER.COM