



H SERIES GEAR PUMP

All cast iron gear pump for those low to medium flow systems. Small package size makes it ideal for direct mounting to PTOs. SAE shaft and flanges. Both side and rear ports standard.



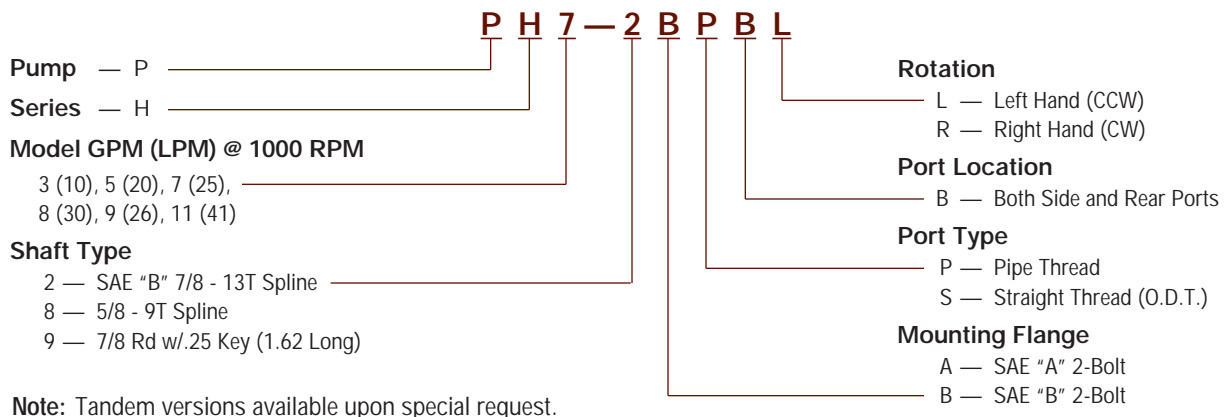
APPLICATIONS:

Designed to meet a multitude of truck mounted equipment including: Aerial equipment, tow equipment, dump bodies, cranes, hay beds, lift gates, fifth wheels, hydraulic tools, small spreaders, winches, snow removal and ice control systems.

PRODUCT FEATURES:

- 6 Standard Sizes
- Pressures to 3500 PSI (240 Bar)
- Speeds to 4000 RPM
- All Cast Iron Construction
- NPT or SAE O-ring Ports
- Full One Year Warranty
- Solid One Piece Shaft
- Pressure Balanced Wear Plates
- Dowel Pin Construction
- Long Life Sleeve Type Bushings

MODEL NUMBER CONSTRUCTION



Muncie Power Products, Inc. Member of the Interpump Hydraulics Group • General Offices and Distribution Center

P.O. Box 548 • Muncie, IN 47308-0548 • (765) 284-7721 • FAX (765) 284-6991 • E-mail info@munciepower.com • Web site http://www.munciepower.com
Drive Products, Inc., Toronto, Exclusive Agents for Canada, a Non-ISO Registered Firm

PH PUMP SPECIFICATIONS

MODEL NUMBER	DISPL CU IN (CC)	MAX* RPM	MIN RPM	MAX PSI (BAR)	MAX OIL TEMP	MAX INLET VACUUM	APP. WT. LBS (KG)
PH3	0.62 (10)	4000	1000	3500 (241)	200°F (93°C)	5 IN.HG. (.17 BAR)	18 (8.3)
PH5	1.24 (20)	4000	800	3500 (241)	200°F (93°C)	5 IN.HG. (.17 BAR)	20 (9.0)
PH7	1.55 (25)	3600	800	3500 (241)	200°F (93°C)	5 IN.HG. (.17 BAR)	21 (9.3)
PH8	1.86 (30)	3600	800	3250 (224)	200°F (93°C)	5 IN.HG. (.17 BAR)	22 (10.1)
PH9	2.17 (36)	3000	800	2900 (200)	200°F (93°C)	5 IN.HG. (.17 BAR)	24 (10.7)
PH11	2.48 (41)	3000	800	2500 (172)	200°F (93°C)	5 IN.HG. (.17 BAR)	25 (11.3)

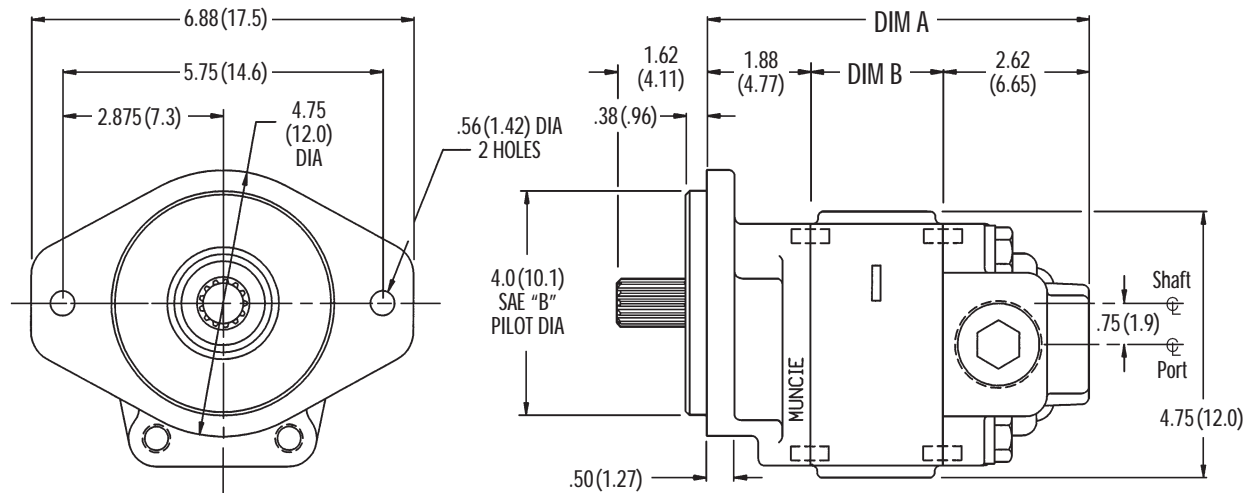
PH PUMP OUTPUT FLOW RATE

FLOW RATE AT 2500 PSI (172 BAR), MEASURED IN GPM (LPM)

MODEL	1000 RPM	1500 RPM	2000 RPM	2500 RPM	3000 RPM
PH3	2.25 (9)	3.5 (13)	5.0 (19)	6.5 (25)	7.5 (28)
PH5	4.5 (17)	7.3 (28)	10.1 (38)	12.5 (47)	15.5 (59)
PH7	5.4 (20)	9.1 (34)	12.4 (47)	15.7 (59)	19.0 (72)
PH8	6.6 (25)	11.1 (42)	15.5 (59)	18.9 (72)	22.7 (86)
PH9	7.6 (29)	12.8 (48)	17.4 (66)	22.0 (83)	26.6 (101)
*PH11	8.9 (34)	14.0 (53)	20.5 (78)	25.0 (95)	30.5 (115)

* Tested at 2000 PSI (138 Bar)

MOUNTING DIMENSIONS IN INCHES (MM)



MODEL	DIM "A"	DIM "B"	MODEL	DIM "A"	DIM "B"
PH3	4.77 (121.2)	0.90 (22.9)	PH8	5.77 (146.5)	1.90 (48.2)
PH5	5.24 (133.9)	1.40 (35.6)	PH9	6.02 (152.9)	2.15 (54.6)
PH7	5.52 (140.2)	1.65 (41.9)	PH11	6.27 (159.3)	2.40 (61.0)

Note: SAE "B" pilot shown. SAE "A" pilot diameter is 3.25 (82.5), .44 diameter holes on 4.19 bolt circle.



MP03-05 Printed in the U.S.A.
© Muncie Power Products, Inc. 2003

Muncie Power Products, Inc. Member of the Interpump Hydraulics Group
General Offices and Distribution Center • P.O. Box 548 • Muncie, IN 47308-0548
(765) 284-7721 • FAX (765) 284-6991 • E-mail info@munciepower.com
Web site <http://www.munciepower.com>

Drive Products, Inc., Toronto, Exclusive Agents for Canada, a Non-ISO Registered Firm

