

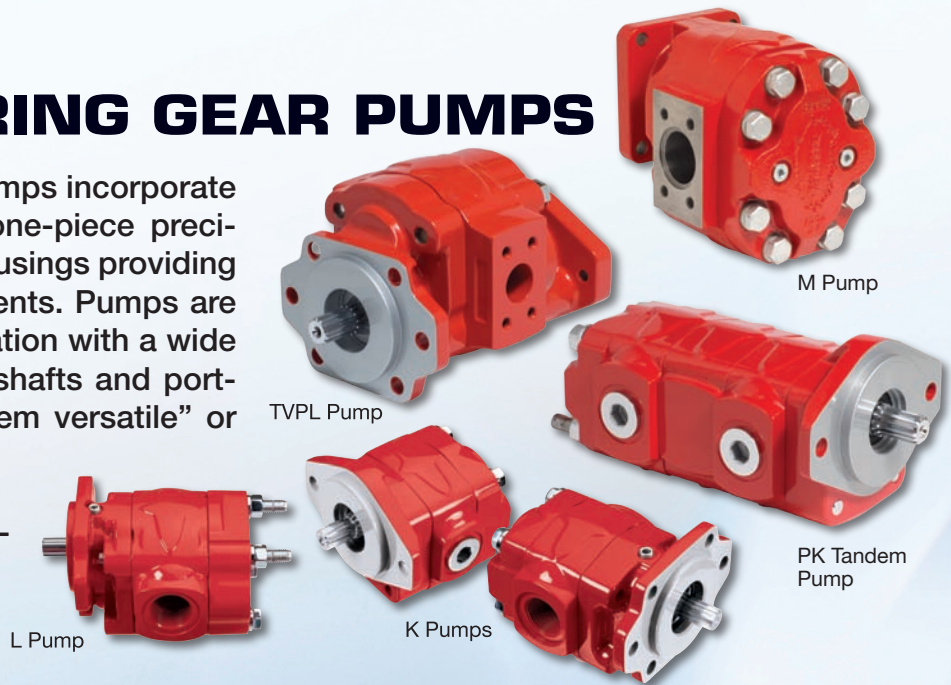


# FLUID POWER

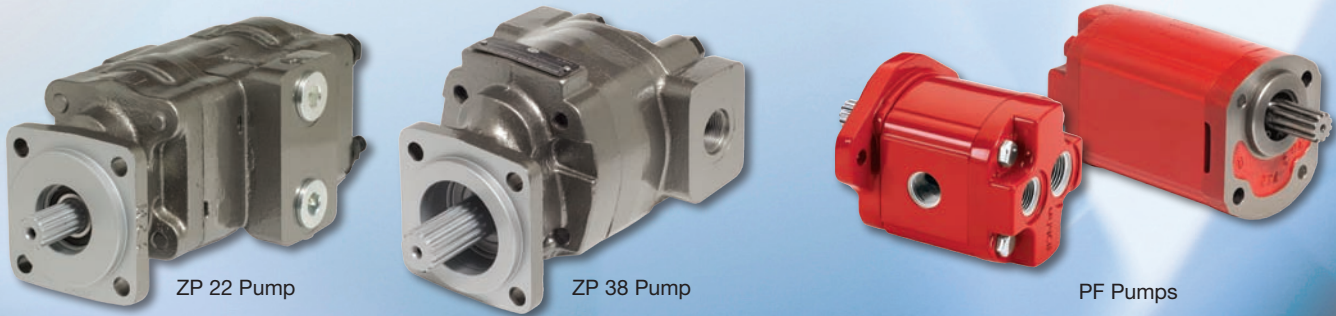
**TAKING 75 YEARS  
OF WORK-TRUCK  
EXPERIENCE  
OFF-ROAD**

# ROLLER BEARING GEAR PUMPS

Muncie roller bearing gear pumps incorporate heavy duty roller bearings, one-piece precision gears and ductile iron housings providing durability in hostile environments. Pumps are available in single or dual rotation with a wide variety of mounting flanges, shafts and porting options. "S.A.E. 'B' Tandem versatile" or piggy back versions are also offered. Pumps range from .98 to 9.27 in<sup>3</sup>/rev with pressure ratings to 3000 psi.



# BUSHING STYLE GEAR PUMPS



Muncie bushing style gear pumps are offered in single or multiple pumping sections with common or separate inlet ports. Displacements range from .48 to 9.0 in<sup>3</sup>/rev with pressures to 3625 psi. The range incorporates both aluminum and cast iron housing construction and available for use as either pumps or motors. Pumps are available in a wide variety of mounting flanges, shafts and porting options.

# AXIAL PISTON PUMPS & MOTORS

Muncie's fixed displacement piston pumps include the P, Q, R, R-tandem and T-Series. The P, Q, R and R-tandem models are in-line designs offering a variety of displacements and are bi-rotational. The T-Series is a bent axis product that can be operated as either a pump or motor. The entire family is designed for high system pressures found in modern equipment.





System Enclosure

MCN creates a communication network using the equipment's electrical system and provides point to point control without installing a separate wire harness. Commands and data can be sent from one MCN device to another MCN device via their connections to 12v and Ground greatly simplifying installation and improving reliability.



Input Control Module



## SYSTEMS & CONTROLS

Muncie Power Products has been providing fluid powersystems and controls for over four decades. The systems have included pneumatic, manual, electric and electronic controls. Our most current controls incorporate our MP<sup>2</sup> technology requiring only positive and ground connection between the control and the actuator functions, reducing wiring requirements. Integral diagnostics facilitate maintenance and reduce operating costs.



MESP 202B Manifold



Large Valve System



Joystick



MESP 402 Control

# MECHANICAL HYDROSTATIC DRIVE

Our hydrostatic split-shaft drives are designed to provide the option for low-speed, high torque propulsion for vehicles normally driven through mechanical transmissions. Additional output drives provide for auxiliary hydraulic or mechanical secondary functions eliminating the need for auxiliary engines.

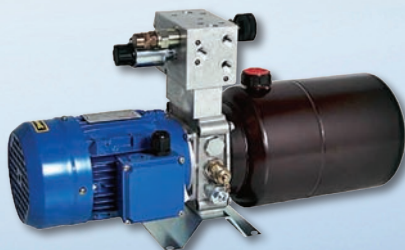


# ELECTRIC POWER PACKS

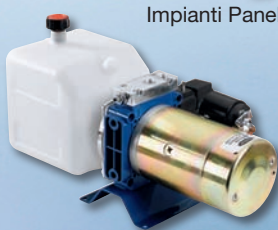
Muncie can provide electric hydraulic power packages designed and assembled to meet your specific equipment requirements. The enclosure can be configured to include any combination of valves and pre-plumbed to simplify installation. Any type of hydraulic power source can be incorporated and valves can be open or closed center type.



Impianti Alimentare Zoom



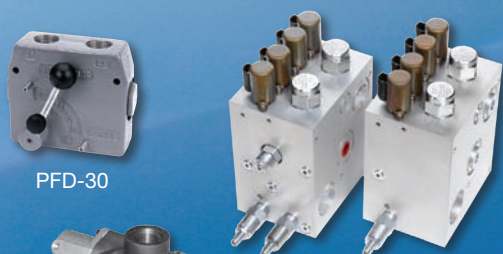
Impianti Panelli Solari Zoom



DC Power Pack

# ACCESSORIES

Complete your hydraulic circuit with directional valves, accessory valves, filters and electronic controls.



PFD-30

Valves



Pilot Valve



MSV Valve



Hydraulic Filters



SPD-1001A

If you have a fluid power requirement, call us at 1-866-225-1847.



**Muncie®  
Power  
Products**

Muncie Power Products, Inc. Member of the Interpump Hydraulics Group  
General Offices and Distribution Center • P.O. Box 548 • Muncie, IN 47308-0548  
(765) 284-7721 • FAX (765) 284-6991 • E-mail info@munciepower.com  
Web site <http://www.munciepower.com>

ISO Certified by an Accredited Registrar

