

## OPTIMUM SERIES

HIGH PERFORMANCE GEAR PUMPS/MOTORS

- Two-Piece Construction
- Premium bushings for maximum life
- Bi-rotational or Uni-rotational design
- High temp./high press. shaft seals
- Versatile 4-port design
- Tight tolerances = High efficiency
- Advanced noise reducing technology

Muncie's **OPTIMUM** SERIES high performance gear pumps/motors offer high pressure capabilities and are designed for durability and long life for many truck and mobile equipment applications.

Full featured design allows for reduced inventory requirements and installation flexibility.

The **OPTIMUM** SERIES offers superior benefits & added value in a cost competitive package unmatched by the competition.

[www.munciepower.com/optimum](http://www.munciepower.com/optimum)

# OPTIMUM SERIES

HIGH PERFORMANCE GEAR PUMPS/MOTORS

## OPTIMUM W SERIES

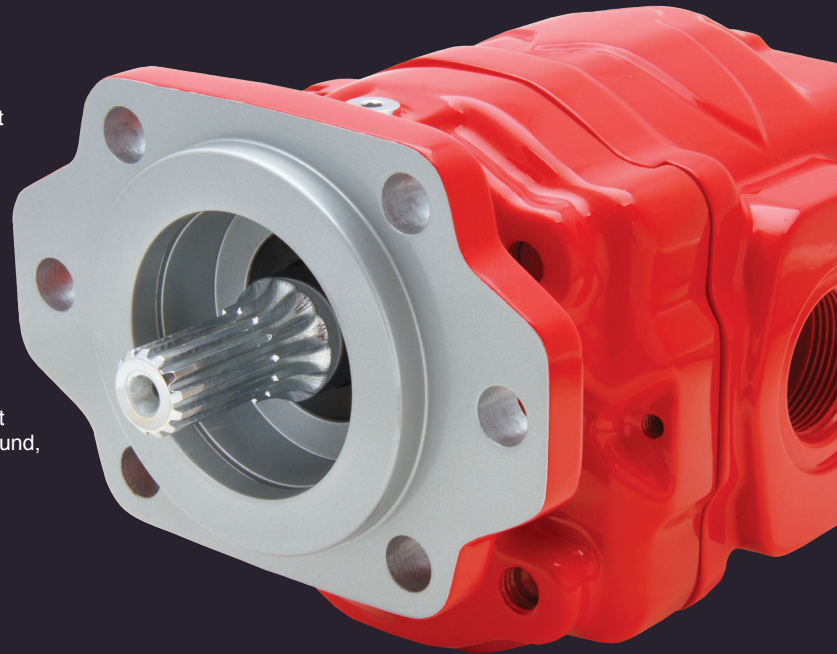
- 8 displacements from 6 - 21 GPM @ 1 000RPM (1.45 - 4.87 in<sup>3</sup>)
- Pressures up to 4,350 PSI (300 BAR)
- Speeds up to 3,600 RPM
- Flanges: SAE "A" 2-bolt, SAE "B" 2/4-bolt, MPP's remote foot mount
- Drive shafts: SAE "B" 7/8-13T, SAE "B" 7/8 round, 3/4-11T, SAE "BB" 1.0"-15T, SAE "BB" 1.0" round
- Porting: SAE (ODT) straight thread O-ring boss, split flange

## OPTIMUM X SERIES

- 9 displacements from 14 - 36 GPM @ 1,000 RPM (3.18 - 8.43 in<sup>3</sup>)
- Pressures up to 4,350 PSI (300 BAR)
- Speeds up to 3,000 RPM
- Flanges: SAE "B" 2/4-bolt, SAE "C" 4-bolt, MPP's remote foot mount
- Drive shafts: SAE "B" 7/8-13T, SAE "BB" 1.0"-15T, SAE "BB" 1.0" round, SAE "C" 1.25"-14T, SAE "C" 1.25" round
- Porting: SAE (ODT) straight thread O-ring boss, split flange

## OPTIMUM Y SERIES

- 9 displacements from 22 - 62 GPM @ 1,000 RPM (5.12 - 14.39 in<sup>3</sup>)
- Pressures up to 4,000 PSI (275 BAR)
- Speeds up to 3,000 RPM
- Flanges: SAE "B" 4-bolt, SAE "C" 4-bolt
- Drive shafts: SAE "BB" 1.0" round, SAE "C" 1.25"-14T, SAE "C" 1.25" round
- Porting: SAE (ODT) straight thread O-ring boss, split flange



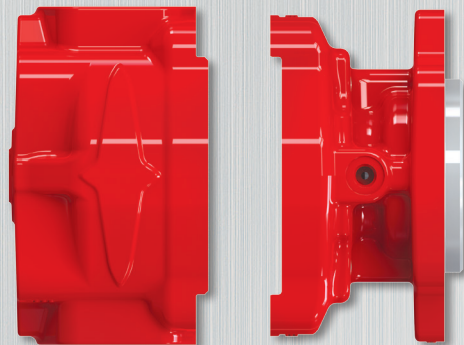
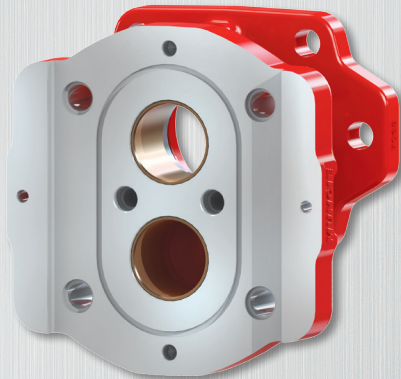
*W Series Shown*

## OPTI-Grip™ DESIGN

THE FUTURE OF GEAR PUMP TECHNOLOGY

The **OPTIMUM** SERIES integral, two piece castings are press fit together for greater structural integrity over other traditional designs.

Muncie's **OPTI-Grip™** DESIGN technology allows for higher pressure capabilities and a more rigid pump design for long life and maintained performance.



**Muncie®  
Power  
Products**

MP11-02 Printed in the U.S.A.  
© Muncie Power Products, Inc. 2011

**Muncie Power Products, Inc.** Member of the Interpump Hydraulics Group  
General Offices and Distribution Center • P.O. Box 548 • Muncie, IN 47308-0548  
(765) 284-7721 • FAX (765) 284-6991 • E-mail [info@munciepower.com](mailto:info@munciepower.com)  
Web site <http://www.munciepower.com>  
Drive Products, Exclusive Agents for Canada