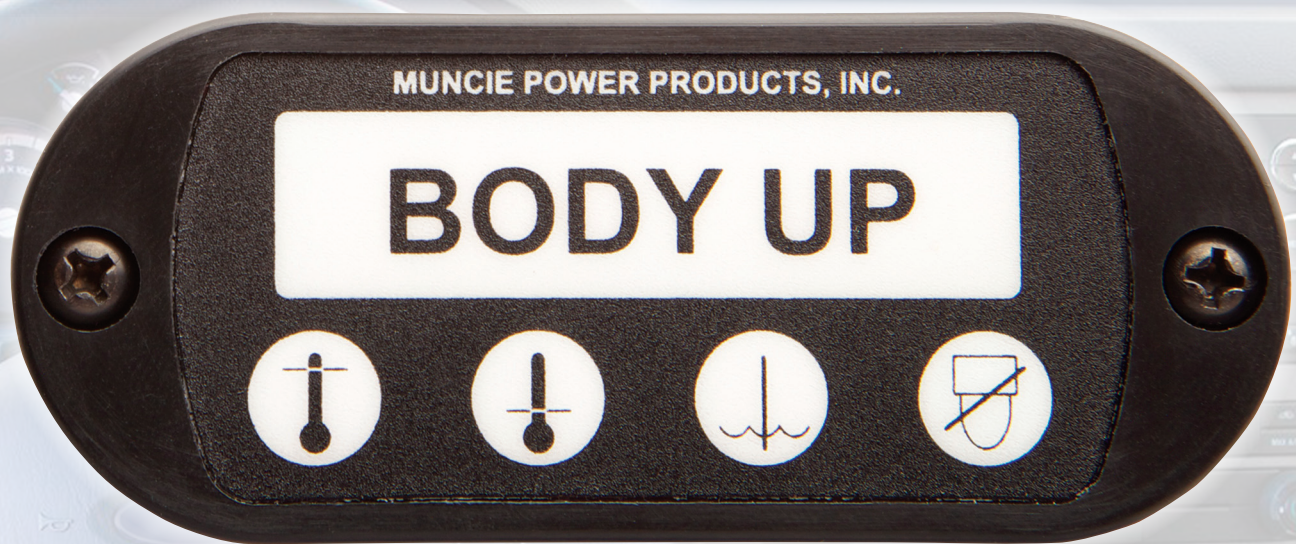




MSD1

MULTI-SENSOR DISPLAY PANEL

PRECAUTIONARY SAFETY WARNING SYSTEM



CONSOLIDATE AND SIMPLIFY YOUR HYDRAULIC WARNING LIGHTS

- Easy to read backlit LED indicators
- Compatible with any hydraulic system
- Simple to install or retrofit
- Combines five commonly used sensors into one simple package:
 - Hot Oil-may indicate need to shut down system temporarily
 - Cold Oil-system needs to be warmed
 - Low Oil-may indicate a leak or rupture
 - Dump Body Up-reminder to driver
 - Filter Bypass-may require maintenance

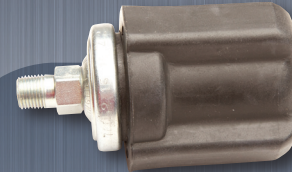


MSD1

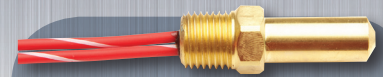
MULTI-SENSOR DISPLAY PANEL



Hot Oil/Low Oil



Filter Bypass



Cold Oil

MSD1 - X - X - X - X - X

X - No Option
W - Wiring Harness

X - No Option
A - Filter Bypass 20 PSI Switch
B - Filter Bypass 15 PSI Switch

X - No Option
C - Cold Oil Sensor

X - No Option
D - Dump Body Up Switch

X - No Option
H - Hot Oil/Low Oil Switch

NAME	DESCRIPTION	PART NUMBER
Dump Body Up	Normally Open, 15° Tilt	MS100
Hot Oil/Low Oil	Normally Open, 185°F Trip Point, 1/4"-18 NPT Male Thread	30T35899
Cold Oil	Normally Closed, 44°F Trip Point, 1/4"-18 NPT Male Thread	30T35897
Filter Bypass	Normally Open, 20 PSI, 1/8"-27 NPT Male Thread	PM515A
	Normally Open, 15 PSI, 1/8"-27 NPT Male Thread	PM515B



Muncie Power Products, Inc. Member of the Interpump Hydraulics Group
 General Offices and Distribution Center • P.O. Box 548 • Muncie, IN 47308-0548
 (765) 284-7721 • FAX (765) 284-6991 • E-mail info@munciepower.com
 Web site <http://www.munciepower.com>

