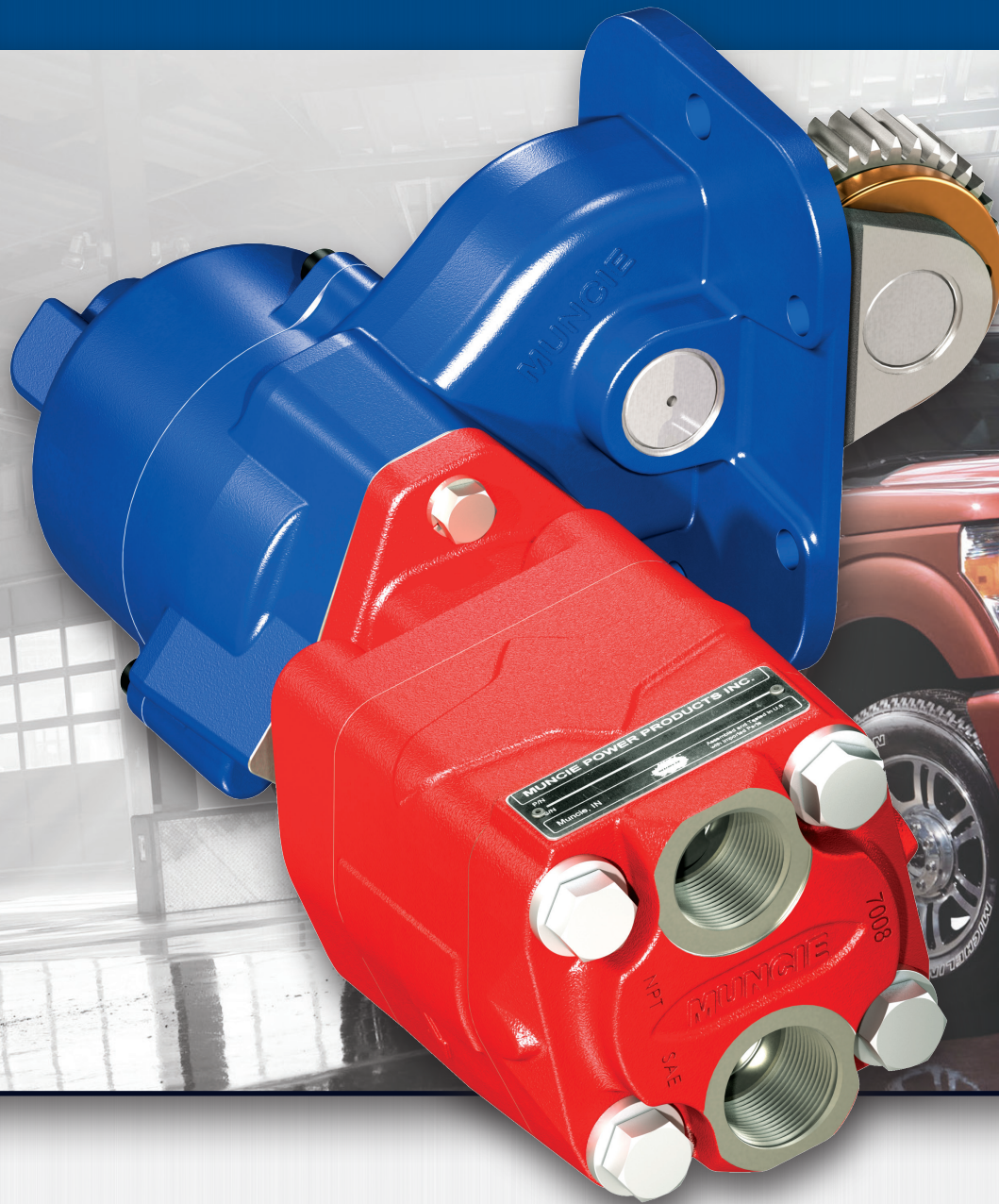




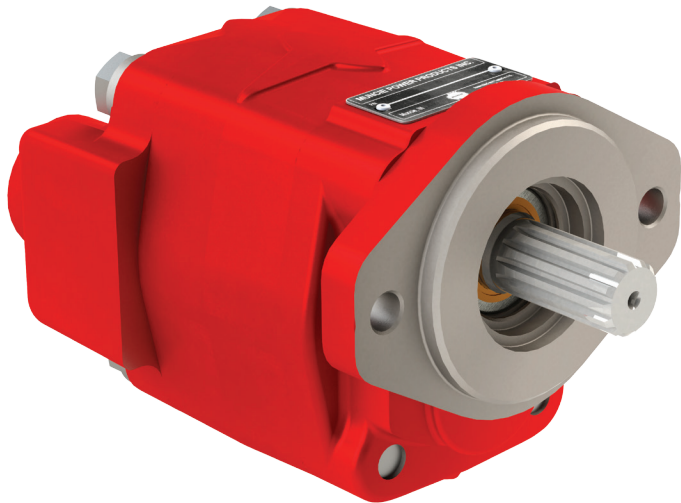
FR66 PTO

WITH SAE "A" OUTPUT | Q PUMP MOUNT OPTION



FEATURES & BENEFITS

- Using patented technology
- Higher torque capacity of 200 lb.ft.
- Increased durability
- The new benchmark for noise reduction
- One-piece housing, fewer leak points
- Complete integrated wiring harness
- SAE "A" flange
- SAE "B" shaft



H SERIES

Modifications to the H Series pump rear cover will allow optimum compatibility with FR66 “Q” mount applications. Enhanced design features, including elimination of side ports and the removal of nearly 1/2” of material from the suction side of the housing, provide increased clearance of the floorboard.

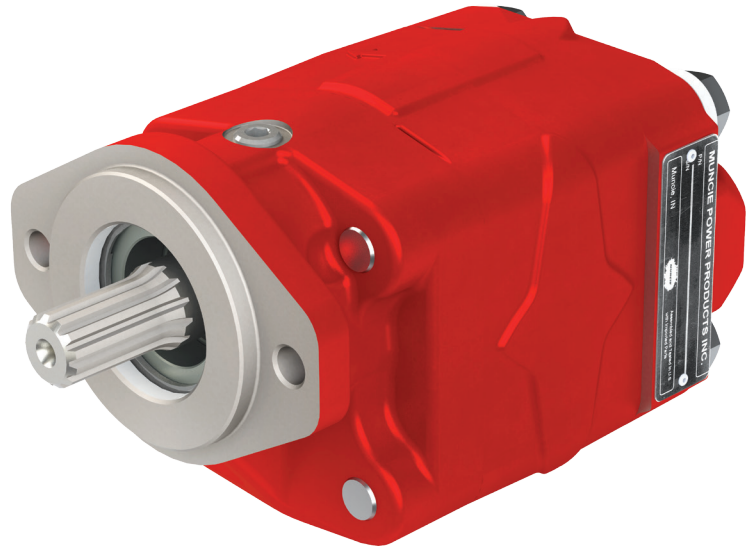
All standard “H” series displacements will be available for FR66 “Q” mount applications. Each unit will come standard with a SAE “A” 2 bolt mounting flange and 7/8 - 13T splined shaft.

Model Number	Displ. in3(cc)	Max RPM	Min RPM	Max Press PSI (BAR)	Inlet (SAE)	Outlet (SAE)	Max. Inlet Vacuum
PH1-03-02ASRL-M	0.62 (10)	3500	1000	3500 (241)	1.25	0.75	5in.hg.
PH1-05-02ASRL-M	1.24 (20)	3500	800	3500 (241)	1.25	0.75	5in.hg.
PH1-07-02ASRL-M	1.55 (25)	3250	800	3500 (241)	1.25	0.75	5in.hg.
PH1-08-02ASRL-M	1.86 (30)	3000	800	3250 (224)	1.25	0.75	5in.hg.
PH1-09-02ASRL-M	2.17 (36)	3000	800	2900 (200)	1.25	0.75	5in.hg.
PH1-11-02ASRL-M	2.48 (41)	3000	800	2500 (172)	1.25	0.75	5in.hg.

K SERIES

The “K” Series standard gear housing will be replaced with the “S” series gear housing for use on FR66 “Q” mount applications. Elimination of side ports on the “S” gear housing significantly reduces overall width of the pump. This reduction provides increased clearance of the floorboard.

Only the 6, 13 and 17 GPM “K” series models will be available for FR66 “Q” mount applications due to the limited amount of “S” displacements. Each unit will come standard with a SAE “A” 2 bolt mounting flange and 7/8 - 13T splined shaft.



Model Number	Displ. in3(cc)	Max RPM	Min RPM	Max Press PSI (BAR)	Inlet (NPT)	Outlet (SAE)	Max. Inlet Vacuum
PK1-06-02ACRL-M	1.47 (24)	3600	600	3000 (207)	1.00	1.00	5in.hg.
PK1-13-02ACRL-M	2.96 (48)	2500	600	3000 (207)	1.00	1.00	5in.hg.
PK1-17-02ACRL-M	3.94 (65)	2500	600	2500 (172)	1.00	1.00	5in.hg.



MP12-16 (Rev. 10-13) Printed in the U.S.A.
© Muncie Power Products, Inc. 2013

Muncie Power Products, Inc. Member of the Interpump Hydraulics Group
General Offices and Distribution Center • P.O. Box 548 • Muncie, IN 47308-0548
(765) 284-7721 • FAX (765) 284-6991 • E-mail info@munciepower.com
Web site <http://www.munciepower.com>

Drive Products, Exclusive Agents for Canada, ISO Certified by an Accredited Registrar

