

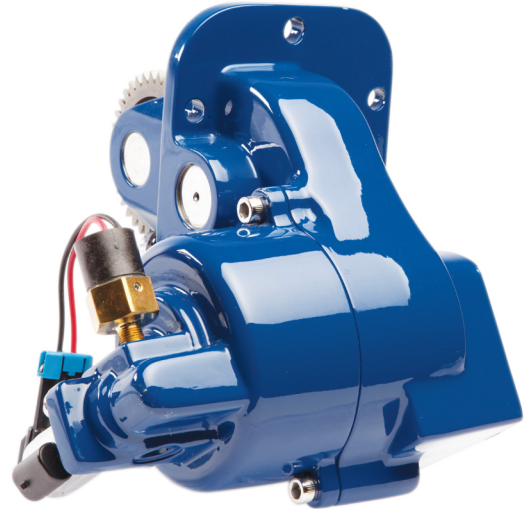
# FR66 SERIES

POWER TAKE-OFF FOR THE FORD TORQSHIFT®



## THE PROVEN LEADER IN DURABILITY

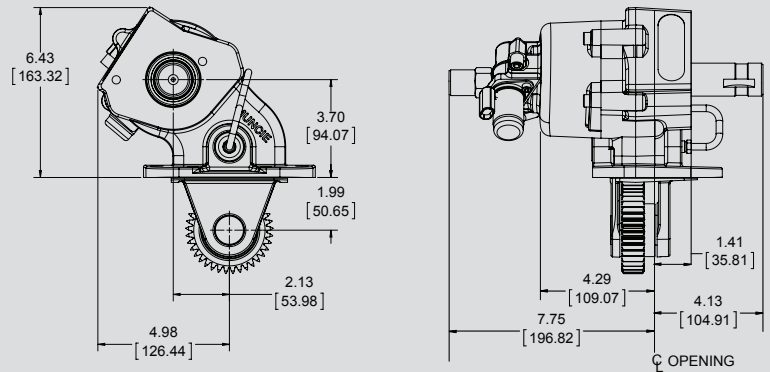
Muncie's updated FR66 power take-off gives you the versatility of mounting larger hydraulic pumps to handle a variety of heavy duty jobs. Our PTO utilizes a one-piece housing design with forced lubrication for increased durability and simplified installation. The FR66 incorporates patented noise suppression technology, integral mobile or stationary functions and a higher torque capacity of 200 lbs./ft.



### KEY FEATURES

- Using patented technology
- Higher torque capacity of 200 lb.ft.
- Increased durability
- The new benchmark for noise reduction
- One-piece housing, fewer leak points
- Complete integrated wiring harness
- SAE "A" flange
- SAE "B" shaft

### DIMENSIONS



### FR66 - F12 09 - D 3 N X

#### MODEL

FORD 6 BOLT — FR66

#### TRANSMISSION GEAR

FORD 12.18 P — F12

#### RATIO

0.90:1 — 09

#### SHIFT TYPE

D — ELEC./HYD. (DIESEL WIRING VERSION)

G — ELEC./HYD. (GASOLINE WIRING VERSION)

#### SPECIAL FEATURES

X — NONE

#### OUTPUT TYPE

B — 1-1/4" ROUND KEY\*\*

N — 3/4" 11T SPL

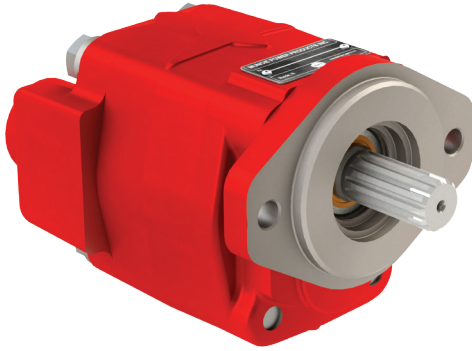
Q — SAE A 2 BOLT 7/8-13T  
SPLINED SHAFT

T — SAE A 2-BOLT; 3/4-11T  
SPLINED SHAFT

#### ASSEMBLY ARRANGEMENT

3

\*\* Driveline output is not recommended on 4x4 Chassis.



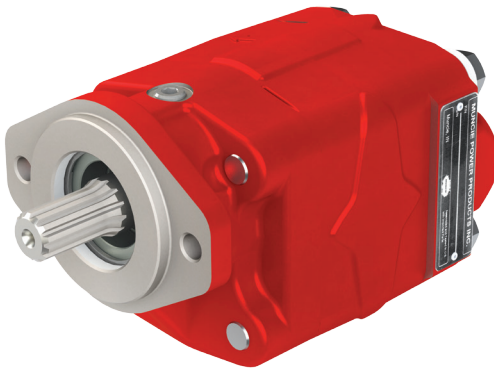
## H SERIES

Modifications to the H Series pump rear cover will allow optimum compatibility with FR66 "Q" mount applications. Enhanced design features, including elimination of side ports and the removal of nearly 1/2" of material from the suction side of the housing, provide increased clearance of the floorboard.

All standard "H" series displacements will be available for FR66 "Q" mount applications. Each unit will come standard with a SAE "A" 2 bolt mounting flange and 7/8 - 13T splined shaft.

Model Number	Displ. in3(cc)	Max RPM	Min RPM	Max Press PSI (BAR)	Inlet (SAE)	Outlet (SAE)	Max. Inlet Vacuum
PH1-03-02ASRL-M	0.62 (10)	3500	1000	3500 (241)	1.25	0.75	5in.hg.
PH1-05-02ASRL-M	1.24 (20)	3500	800	3500 (241)	1.25	0.75	5in.hg.
PH1-07-02ASRL-M	1.55 (25)	3250	800	3500 (241)	1.25	0.75	5in.hg.
PH1-08-02ASRL-M	1.86 (30)	3000	800	3250 (224)	1.25	0.75	5in.hg.
PH1-09-02ASRL-M	2.17 (36)	3000	800	2900 (200)	1.25	0.75	5in.hg.
PH1-11-02ASRL-M	2.48 (41)	3000	800	2500 (172)	1.25	0.75	5in.hg.

NOTE: Use H Series pumps on 4x2 chassis applications only.



## K SERIES

The "K" Series standard gear housing will be replaced with the "S" series gear housing for use on FR66 "Q" mount applications. Elimination of side ports on the "S" gear housing significantly reduces overall width of the pump. This reduction provides increased clearance of the floorboard.

Only the 6, 13 and 17 GPM "K" series models will be available for FR66 "Q" mount applications due to the limited amount of "S" displacements. Each unit will come standard with a SAE "A" 2 bolt mounting flange and 7/8 - 13T splined shaft.

Model Number	Displ. in3(cc)	Max RPM	Min RPM	Max Press PSI (BAR)	Inlet (NPT)	Outlet (SAE)	Max. Inlet Vacuum
PK1-06-02ACRL-M	1.47 (24)	3600	600	3000 (207)	1.00	1.00	5in.hg.
PK1-13-02ACRL-M	2.96 (48)	2500	600	3000 (207)	1.00	1.00	5in.hg.
PK1-17-02ACRL-M	3.94 (65)	2500	600	2500 (172)	1.00	1.00	5in.hg.

NOTE: Use K Series pumps on 4x2 chassis applications only.



## F4 SERIES

Ultimate power and performance in a small package best describes the all new F4 Series gear pumps. The pressure balanced bushing blocks and sleeve bearings provide both extra long life and high performance.

### Direct Mount Pump Use PF4-\*\*\*-16QSRL Pump Flow @ 1200 ENG. (Theoretical)

PF4-870	13.3 GPM	Roll-Off*	PF4-368	5.6 GPM	Auto Loader*
PF4-818	12.5 GPM		PF4-290	4.4 GPM	
PF4-714	10.9 GPM	Small Wrecker*	PF4-264	4.0 GPM	
PF4-606	9.2 GPM		PF4-212	3.2 GPM	
PF4-502	7.7 GPM		PF4-160	2.4 GPM	
PF4-424	6.5 GPM				

\* Common Applications