

# PK SERIES

PUMP & MOTOR



## BI-ROTATIONAL, FOUR-PORT DESIGN

Muncie Power Products' PK Series gear pumps come in a wide range of sizes to fit many truck-mounted hydraulic applications requiring small to medium flow rates. The PK Series pumps feature bi-rotational, four-port construction. All series can be either direct mounted to a power take-off, or remote-mounted and shaft driven. The pumps can also be used as high-speed, low-torque hydraulic motors.



### KEY FEATURES

- Seven pump sizes
- Bi-rotational pump/motor
- High-grade cast iron
- Versatile four-port design
- High pressures: Up to 3,000 PSI (207 BAR)
- Four shaft options
- Four mounting flange options
- Optional relief valve

### PUMP AND MOTOR SPECIFICATIONS

MODEL NO.	DISPL. CU.IN. (CC.)	MAX. RPM	MIN. RPM	MAX. PRES. PSI (BAR)	N.P.T. SIDE PORT	O.D.T. SIDE PORTS	N.P.T. REAR PORTS	PUMP O.D.T. REAR PORTS	MOTOR O.D.T. REAR PORTS	WEIGHT LBS. (KG.)
PK1-04*	0.98 (16)	3,600	600	3,000 (207)	1/2	5/8	1	1	1	26.5 (12.1)
PK1-06	1.47 (24)	3,600	600	3,000 (207)	3/4	3/4	1	1	1	27.8 (12.6)
PK1-08	1.97 (32)	3,000	600	3,000 (207)	1	1	1	1	1	29.0 (13.1)
PK1-11	2.46 (40)	3,000	600	3,000 (207)	1	1	1	1	1	30.3 (13.8)
PK1-13	2.96 (48)	2,500	600	3,000 (207)	1 1/4	1 1/4	1	1	1	31.6 (14.3)
PK1-15	3.45 (57)	2,500	600	2,500 (172)	1 1/4	1 1/4	1	1	1	33.0 (15.0)
PK1-17	3.94 (65)	2,500	600	2,500 (172)	1 1/4	1 1/4	1	1	1	34.1 (15.5)

**Approximate Weights:** 26.5–34.1 lbs. (12.1–15.5 Kg.)

**Max Inlet Vacuum:** 5 in.Hg. (.17 BAR)

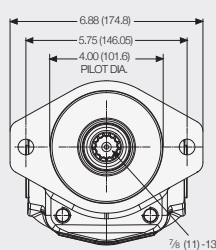
**Max inlet back pressure:** 150 PSI (10 BAR)

**Note:** \* PK1-04 is not recommended to be used as a motor.

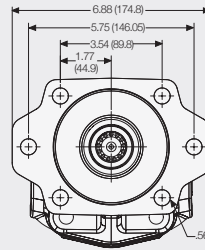
# INSTALLATION DIMENSIONS

## SINGLE PUMP "B" DIRECT MOUNT (SAE "B")

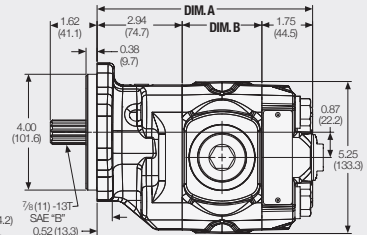
MODEL NUMBER	DIM A		DIM B IN (MM)
	PK IN (MM)	PKS IN (MM)	
04	5.94 (150.9)	4.81 (122.2)	1.25 (31.8)
06	6.19 (157.2)	5.06 (128.5)	1.50 (38.1)
08	6.44 (163.6)	5.31 (134.9)	1.75 (44.5)
11	6.69 (169.9)	5.56 (141.2)	2.00 (50.8)
13	6.94 (176.3)	6.06 (153.9)	2.25 (57.2)
15	7.19 (182.6)	6.06 (153.9)	2.50 (63.5)
17	7.44 (189.0)	6.31 (160.3)	2.75 (69.9)



PKS



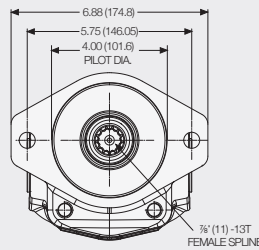
PK



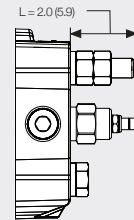
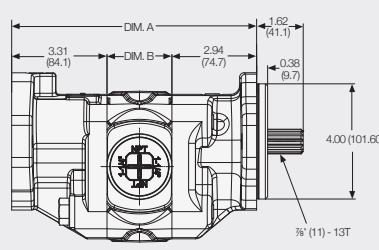
DIM C: PK 2.94 (74.7); PKS 1.81 (46.0)

## TANDEM VERSATILE (FRONT PUMP) SAE "B" SHOWN

MODEL NUMBER	DIM A IN (MM)	DIM B IN (MM)
04	7.81 (198.4)	1.50 (38.1)
08	8.06 (204.7)	1.75 (44.5)
11	8.21 (208.5)	2.00 (50.8)
13	8.56 (217.4)	2.25 (57.2)



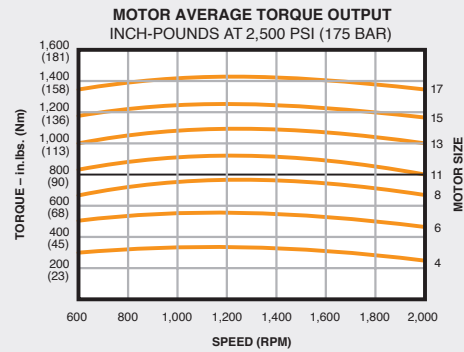
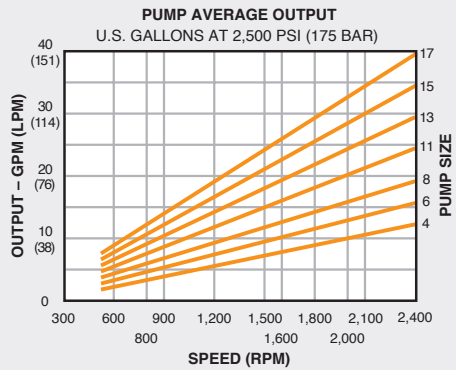
Rear Pump Flange  
SAE "B" 2-Bolt



Rear Cover with  
Relief Valve

Bypass Port: -10 SAE (N.P.T. N/A)  
R.V. Preset: 2,000 PSI (138 BAR)

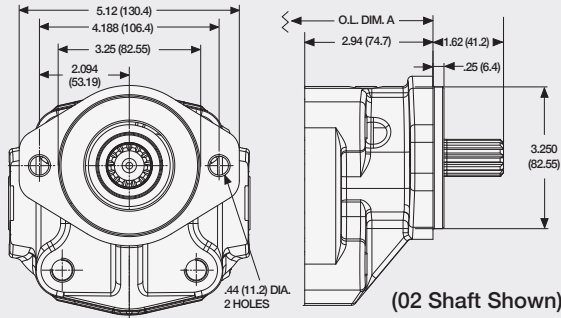
# OUTPUT



# FRONT COVER OPTIONS

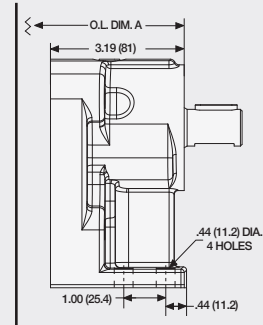
## "A" DIRECT MOUNT (SAE "A") IN (MM)

MODEL NUMBER	O.L. IN DIM A
04	5.94 (150.9)
06	6.19 (157.2)
08	6.44 (163.6)
11	6.69 (169.9)
13	6.94 (176.3)
15	7.19 (182.6)
17	7.44 (189.0)



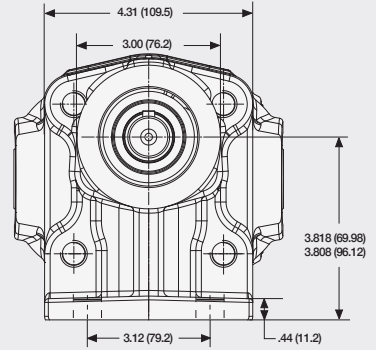
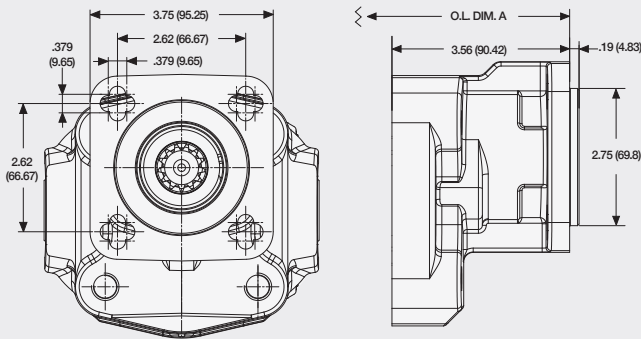
## "R" REMOTE MOUNT IN (MM)

MODEL NUMBER	O.L. IN DIM A
04	6.19 (157.2)
06	6.44 (163.6)
08	6.69 (169.9)
11	6.94 (176.3)
13	7.19 (182.6)
15	7.44 (189.0)
17	7.69 (195.3)



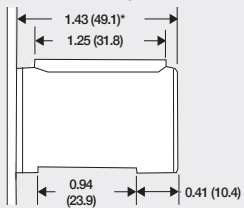
## "G" DIRECT MOUNT IN (MM)

MODEL NUMBER	O.L. IN DIM A
04	6.56 (166.6)
06	6.81 (172.9)
08	7.06 (179.3)
11	7.31 (185.6)
13	7.56 (192.0)
15	7.81 (198.4)
17	8.06 (201.7)

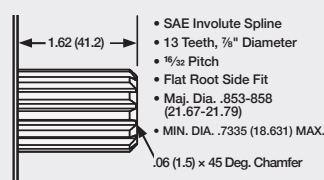


# SHAFT OPTIONS

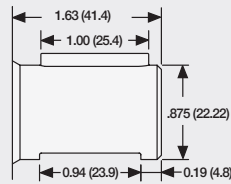
### SHAFT TYPE: 01 1.00" Rnd. - 1/4" Key • STL ≤ 16,900



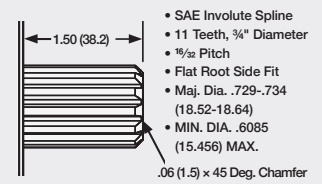
### SHAFT TYPE: 02 3/8" -13T (SAE "B") • STL ≤ 16,550



### SHAFT TYPE: 09 3/8" Rnd. - 1/4" Key • STL ≤ 11,200



### SHAFT TYPE: 16 3/4" -11T • STL ≤ 10,114



Note: \* "R" Mount - .23 (5.8) shorter

# MODEL NUMBER CONSTRUCTION

**TV PK 1 08-02 B P B B-30**

## Tandem Versatile

TV \_\_\_\_\_  
 (Do Not Use for Single Pumps)  
 (Not Available on PKS)

## Series

PK \_\_\_\_\_  
 KS — Short Front Cover (SAE "B" 2-Bolt)\*\*

## Design No.

1 — Standard \_\_\_\_\_

## Model GPM (GPM/LPM) @ 1,000 RPM

04 — (4.2/15)  
 06 — (6.07/23)\*  
 08 — (7.92/30)\* \_\_\_\_\_  
 11 — (11.09/42)\*  
 13 — (12.9/49)\*  
 15 — (15.06/57)  
 17 — (17.1/64)

## Shaft Sizes & Types (metric info where applicable)

01 — 1.00" Rnd. w/¼" Key (25.4 Rnd. w/6.35 Key)  
 02 — SAE "B" ⅞" 13-Tooth Spline \_\_\_\_\_  
 09 — ⅞" Rd. w/¼" Key (22.22 Rnd. w/6.35 Key)  
 16 — ¾" 11-Tooth Spline  
 17 — SAE "B-B" 1.00" 15-Tooth Spline (17 GPM Only)

## Notes:

\*Available as tandem front mount sections. Limited shaft options.  
 \*\*Low pressure shaft seal with no retainer.

## Optional Pressure Relief

(Do Not Use If Not Required)  
 30 — Std 3,000 PSI (207 BAR)  
 (Fully Adjustable)

## Rotation Options

B — Bi-rotational  
 L — Left Hand } Specify with  
 R — Right Hand } Relief Option

## Port Location Options

B — Both Side and Rear  
 S — Side Ports  
 (Tandem & RV Option Only)

## Port Type Options

P — Pipe Thread (N.P.T.)  
 S — Straight Thread (O.D.T.)

## Mounting Flange Options

A — SAE "A" 2-Bolt  
 B — SAE "B" 2- & 4-Bolt, PKS Short  
 Cover SAE "B" 2-Bolt Only  
 R — Remote Pad Mount  
 G — Cloverleaf Dana "R" Mount  
 Use Shaft 02  
 (Special Order Only)  
 K — SAE "B" 4-Bolt

# OIL RECOMMENDATIONS

Muncie Power does not promote specific manufacturers' brands of oil. Recommendations below are guidelines; consult oil manufacturer for exact application needs.

## Viscosity Range: Pour Point: 15° F (-10° C) Maximum

Viscosity Minimum: 50–60 SUS (7.5–10.5 cST)  
 Viscosity Optimum Continuous: 60–100 SUS (10.5–21.6 cST)  
 Viscosity Maximum @ start-up: 7,500 SUS (1,600 cST)  
 Viscosity Index: 90 Minimum

## Aniline Point: 175 Minimum

Foam Resistance: Recommended  
 Rust Resistance Inhibitors: Recommended  
 Corrosion Resistance: Recommended  
 Oxidation Stability: Recommended  
 Anti-Wear Additive: .06% Zinc Minimum\*

Cold weather operation requires special oil considerations. Viscosity should not exceed 7,500 SUS (1,600 cST) at lowest startup temperature. Continuous operation should range between 60–1,000 SUS (10.5–216 cST) for all temperature ranges. Never use diesel fuel or kerosene to thin oil.

## Note:

\* Anti-wear additives may be recommended by some motor manufacturers. However, they are optional and typically not required for gear pump or gear motors.



A Member of the Interpump Group

MP15-12 (Rev. 12-24)

201 East Jackson Street, Muncie, Indiana 47305  
 800-367-7867 • Fax: 765-284-6991 • info@munciepower.com

Specifications are subject to change without notice. Visit [www.munciepower.com](http://www.munciepower.com) for warranties and literature. All rights reserved. © Muncie Power Products, Inc. (2008)