

# TITAN<sup>®</sup> MD1 SERIES

POWER TAKE-OFF



## IMPROVED TORQUE CAPACITY FOR HEAVY-DUTY APPLICATIONS

The second in the Titan Class of power take-offs, the Titan MD1 Series is a medium-duty, 10-bolt mounting, constant drive PTO. Designed as a functional replacement to front, crankshaft-driven hydraulic pump applications, the MD1 boasts an improved torque capacity for heavy-duty applications. Various improvements include a maximized gear design, internally pressure-lubricated tapered roller bearings for long life and a lubrication distributing bearing cover allowing 360-degree rotation for easier installation.



### KEY FEATURES

- Increased clearance for easier access
- Improved tapered roller bearings increase life of PTO
- Increased input shaft diameter to increase life and durability
- Reduced leak paths
- Maximized gear design for improved life and noise reduction
- Three available assembly arrangements
- Pump flange rotation at 30-degree intervals
- Available with all options previously available on CD10
- Single torque rating
- Compatible with Muncie Power's EX Drive shaft extension

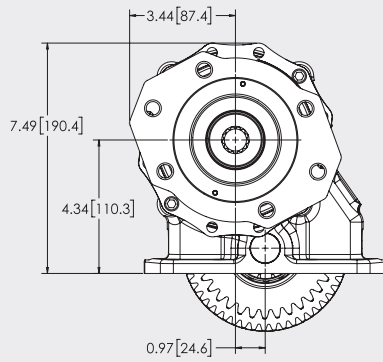
### PTO TORQUE & HORSEPOWER RATINGS

SPEED RATIO	INTERMITTENT/CONTINUOUS HP @ 1,000 RPM	INTERMITTENT/CONTINUOUS TORQUE LBS.FT.	INTERMITTENT (KW) @ 1,000 RPM	INTERMITTENT/CONTINUOUS TORQUE (NM)
05	77	400	(57)	(542)
06	77	400	(57)	(542)
07	79	415	(59)	(563)
08	69	360	(51)	(488)
09	65	340	(48)	(461)
10	59	310	(44)	(420)
11	52	275	(39)	(373)
12	50	265	(37)	(359)
15	39	205	(29)	(278)

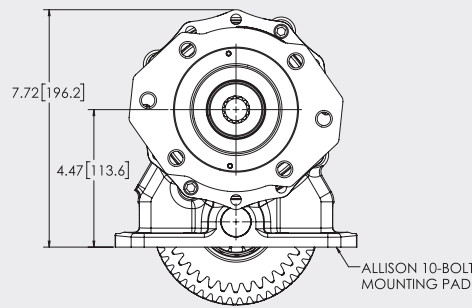
Approximate Weight: 38 lbs. (17.24 Kg.)

# DIMENSIONS

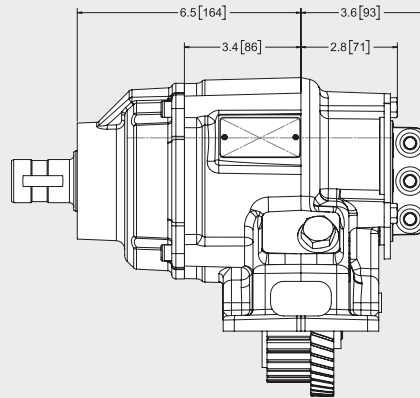
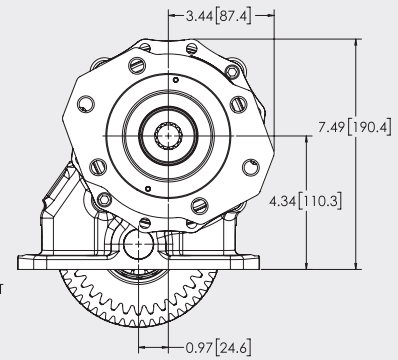
**"3" Arrangement**



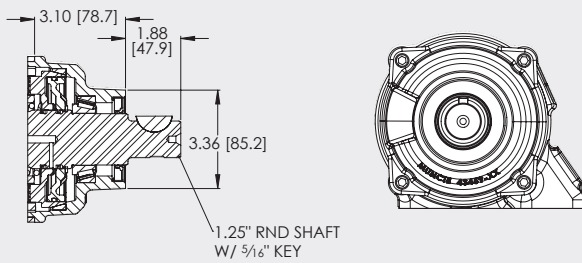
**"5" Arrangement**



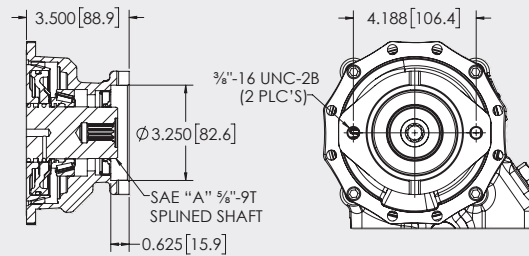
**"1" Arrangement**



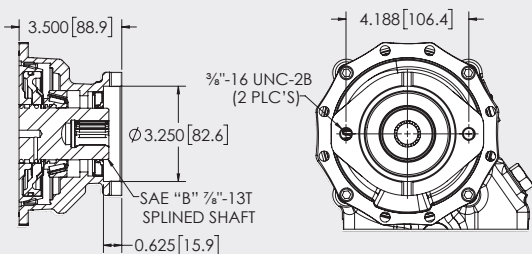
# OUTPUT OPTIONS



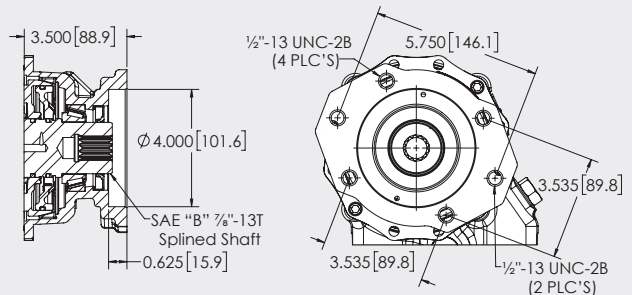
**"1X" OUTPUT - 1 1/4" ROUND KEYED SHAFT**



**"AA" OUTPUT - SAE "A" 5/8" 9T SHAFT, 2-BOLT SAE-"A"**

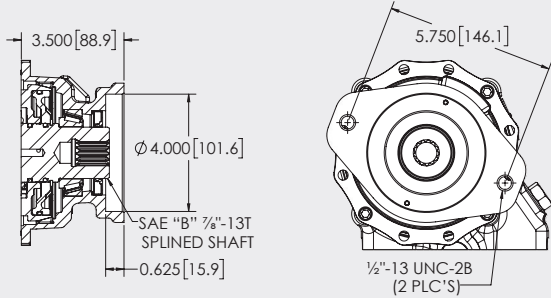


**"BA" OUTPUT - SAE "B" 7/8" 13T, 2-BOLT FLANGE SAE-"A"**

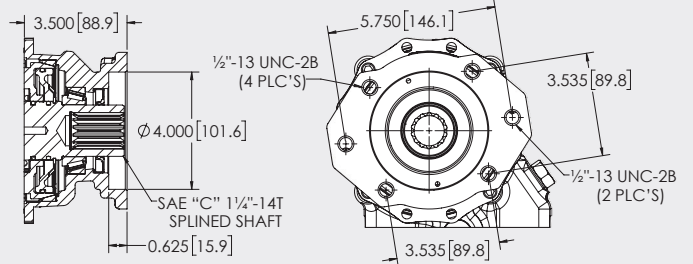


**"BB" OUTPUT - SAE "B" 7/8" 13T, 2- & 4-BOLT SAE-"B"**

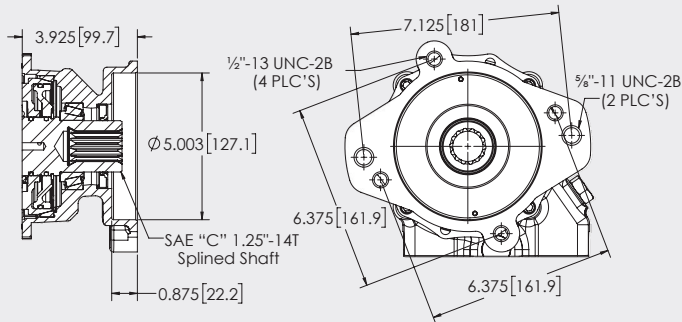
# OUTPUT OPTIONS (CONT)



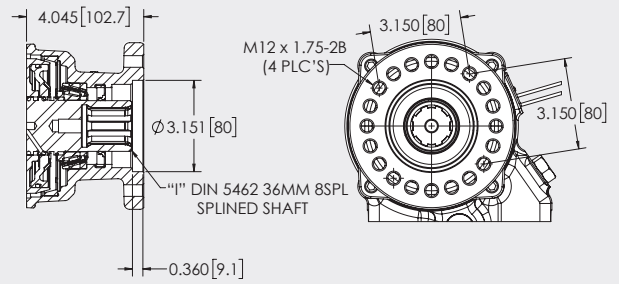
“BS” OUTPUT - SAE “B” 7/8"-13T SHAFT  
SAE “B” 2-BOLT



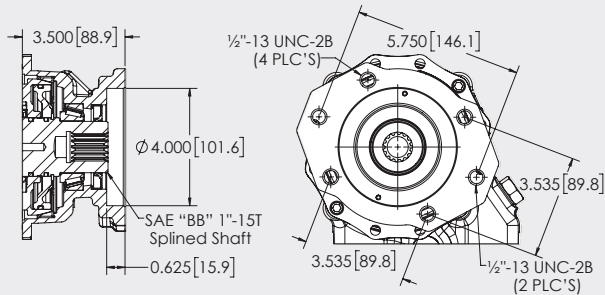
“CB” OUTPUT - SAE “C” 1/4"-14T, SAE “B”



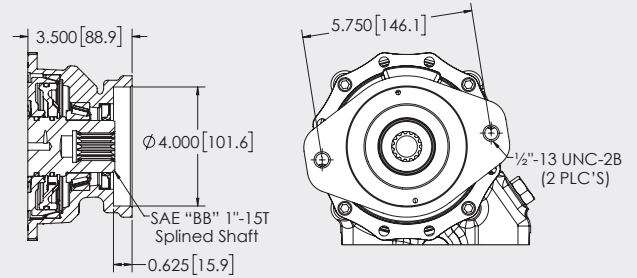
“CC” OUTPUT - SAE “C” 1/4"-14T, 2- & 4-BOLT SAE “C”



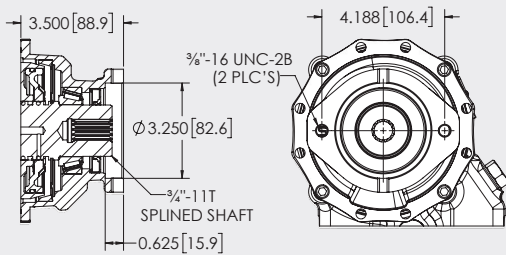
“II” OUTPUT - DIN 5462



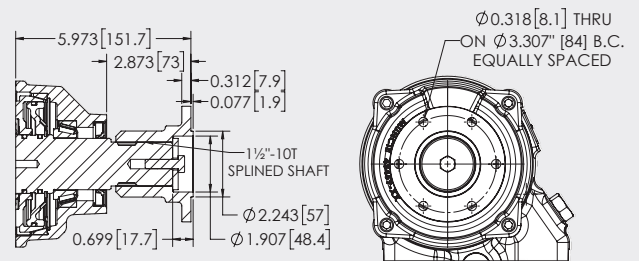
“PB” OUTPUT - SAE “BB” 1"-15T, 2- & 4-BOLT SAE “B”



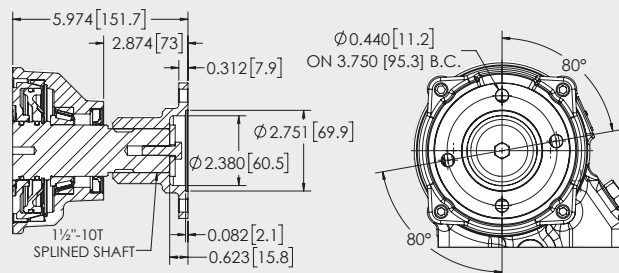
“PS” OUTPUT - SAE “BB” 1" 15T, 2-BOLT SAE-“B”



“TA” OUTPUT - SAE 3/4"-11T, 2-BOLT SAE “A”



“X2” OUTPUT - 1/2" 10T, DIN Companion Flange



“X4” OUTPUT - 1/2" 10T, 1410 Companion

# MODEL NUMBER CONSTRUCTION

## MD1-A10 07-MX 3 BB PX

### Model

MD1 – Medium Duty Constant Drive 10-Bolt

### Transmission Gear

A10 – Allison 3000/4000 series

### Ratio

05 – .54:1 Output Speed  
06 – .63:1  
07 – .73:1  
08 – .84:1  
09 – .90:1  
10 – .97:1  
11 – 1.11:1  
12 – 1.19:1  
15 – 1.48:1

### Shift Type

MX – Constant Drive

### Assembly Arrangement

1 – Right Side Shaft Low  
3 – Left Side Shaft Low  
5 – Top/No Offset (Straight Out From Opening)

### Special Features

PX – Standard Hose Kit  
BX – Hose Kit for Top Opening  
UX – Pulse Generator & Standard Hose Kit  
UB – Pulse Generator & Top Hose Kit  
XX – Hose Delete Kit  
PW – Wet Spline & Standard Hose Kit  
Note: Use with Shaft Extensions

### Output Type

1X – 1¼" Round Shaft  
AA – SAE "A" 5/8" 9T, 2-Bolt SAE-"A"  
BA – SAE "B" 7/8" 13T, 2-Bolt SAE-"A"  
BB – SAE "B" 7/8" 13T, 2- & 4-Bolt SAE-"B"  
BS – SAE "B" 7/8" 13T, 2-Bolt SAE-"B"  
CB – SAE "C" 1¼" 14T, SAE-"B"  
Note: Use with Shaft Extensions  
CC – SAE "C" 1¼" 14T, 2- & 4-Bolt SAE-"C"  
II – DIN 5462  
PB – SAE "BB" 1" 15T 2- & 4-Bolt SAE-"B"  
PS – SAE "BB" 1" 15T 2-Bolt SAE-"B"  
TA – SAE ¾" 11T, 2-Bolt SAE-"A"  
X2 – 1½" 10T, DIN Companion  
X4 – 1½" 10T Male, 1410 Companion



**Muncie®  
Power  
Products**

A Member of the Interpump Group  
MP18-02 (11-19)

201 East Jackson Street • Muncie, Indiana 47305  
800-367-7867 • Fax 765-284-6991 • info@munciepower.com • www.munciepower.com

Specifications are subject to change without notice. Visit [www.munciepower.com](http://www.munciepower.com) for warranties and literature. All rights reserved. © Muncie Power Products, Inc. (2018)