

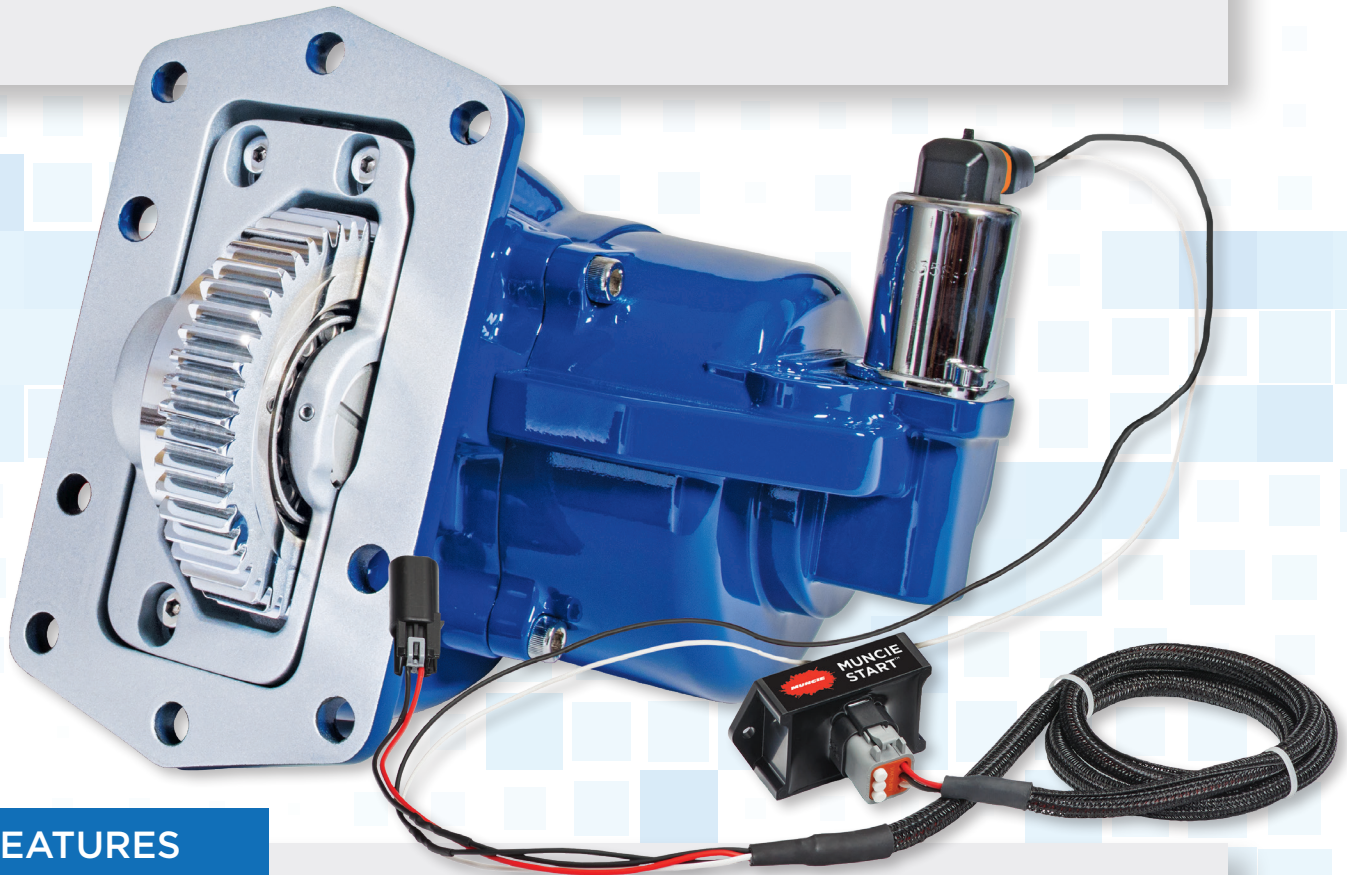
# F20 SERIES PTO

QUIET PTO PERFORMANCE  
FOR FORD'S 10-SPEED  
TRANSMISSION



# F20 SERIES POWER TAKE-OFF

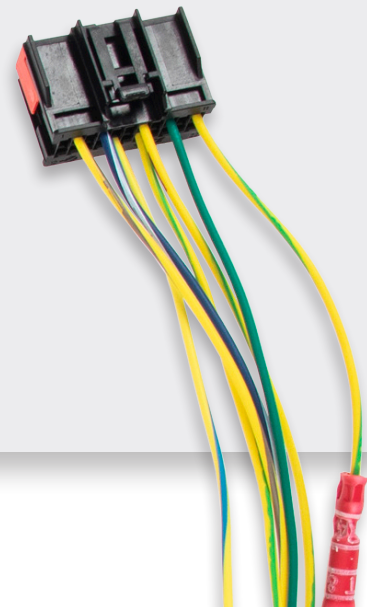
**THE F20 IS A 10-BOLT, CLUTCH SHIFT POWER TAKE-OFF** designed specifically for Ford 10R140 TorqShift® 10-speed transmission on class 3–5 Ford trucks starting in model year 2020. This power take-off utilizes the full transmission torque capacity of 300 lbs.ft. and, like the FR6Q, features patent-pending noise abatement technology. Although the F20 power take-off has a 10-bolt mounting pattern unique to the 10R140 transmission, it will have all the same options available as the FR6Q.



## KEY FEATURES

Available with **Muncie Start**® – an electronically controlled, modulated clutch engagement system that eliminates torque spikes upon start up for high-inertia loads

- **Pre-configured wiring harness for easy plug and play**
- Designed for Ford Super Duty trucks F-250–F-600, with the Ford 10R140 TorqShift® transmission
- Features patent-pending noise abatement technology
- Available with direct mount and round shaft output options
- Solenoid activated



## TARGET MARKETS

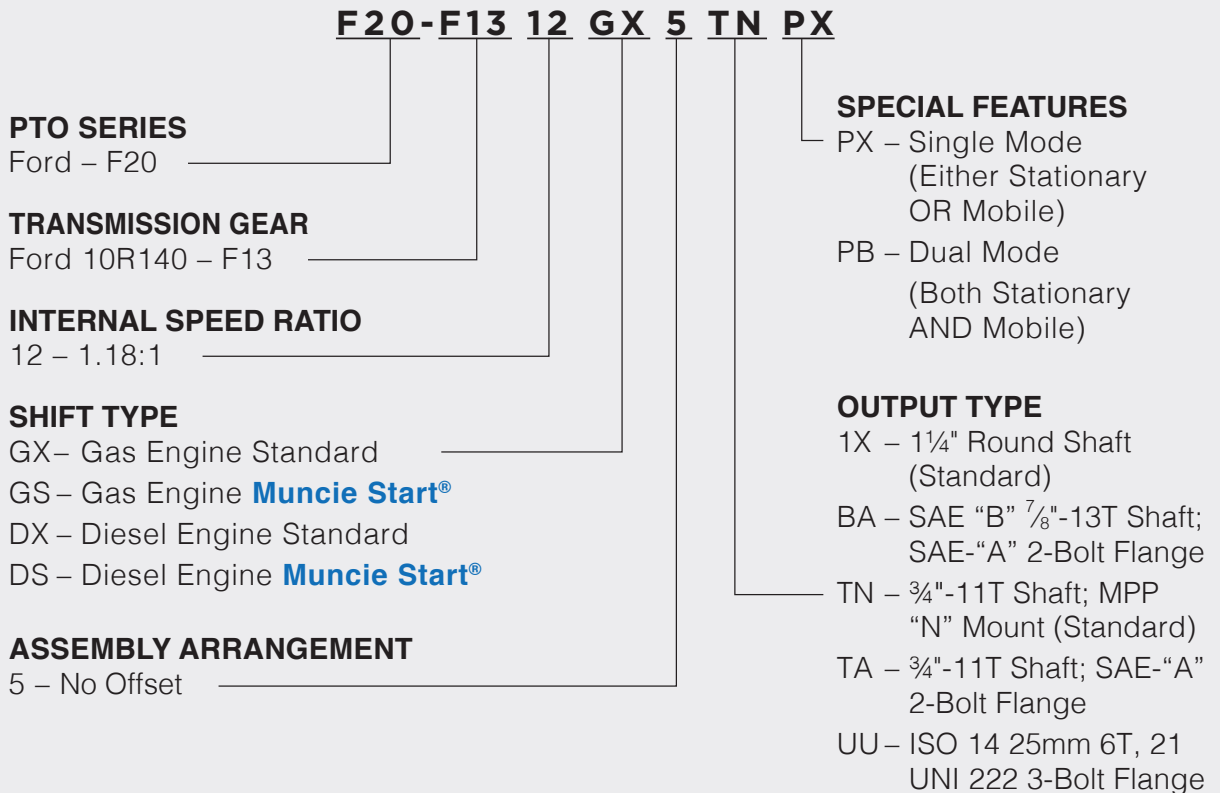
- Snow and Ice
- Dump
- Refuse
- Tow and Recovery
- Utility

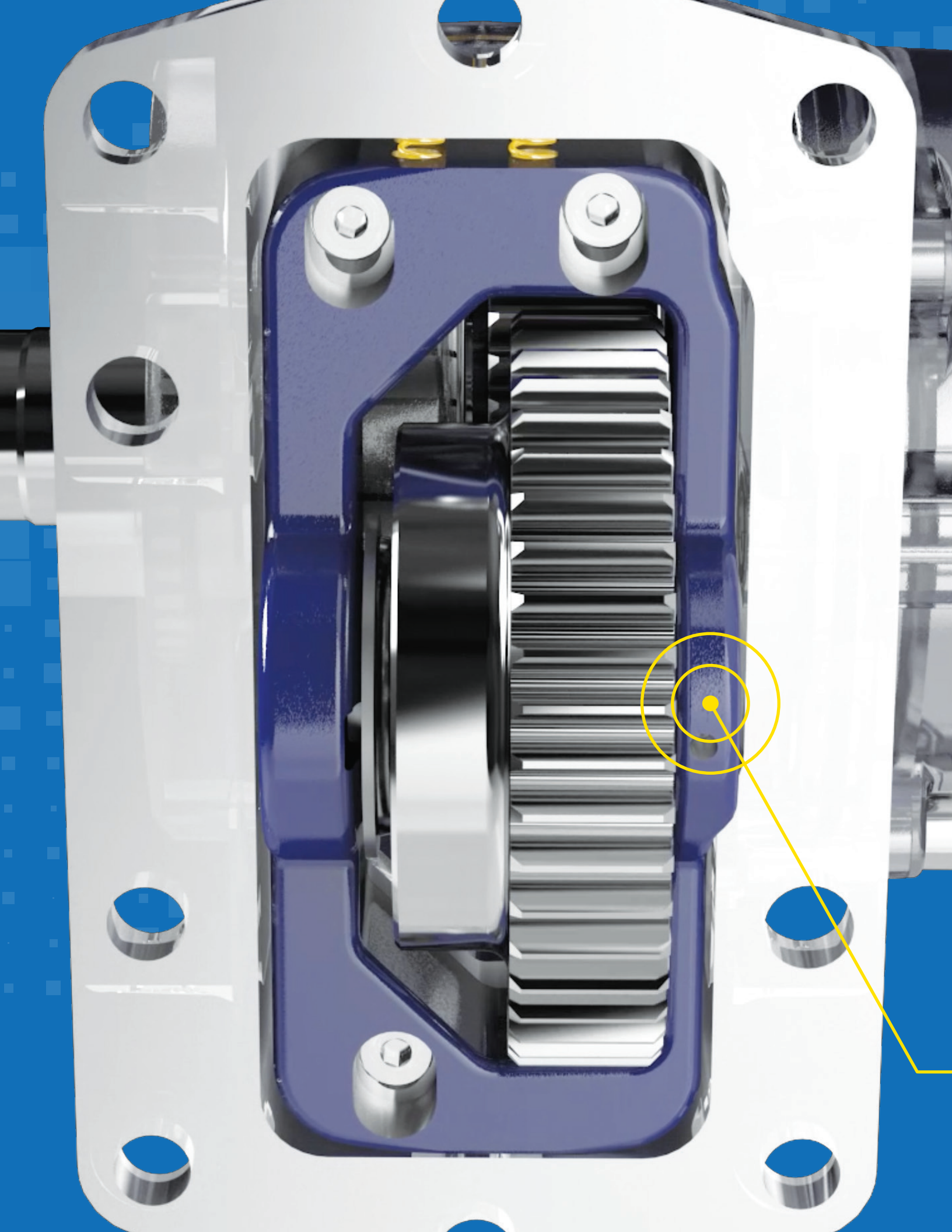
## PTO TORQUE & HORSEPOWER RATINGS

INTERNAL SPEED RATIO CODE	% OF ENGINE SPEED	INTERMITTENT HP (kW) @ 1,000 RPM	INTERMITTENT TORQUE LBS.FT. (Nm)
12	130%	50 (37 kW)	261 (354 Nm)

Approximate Weight: 29 lbs. (13.15 Kg.)

## MODEL NUMBER CONSTRUCTION







# QUIET

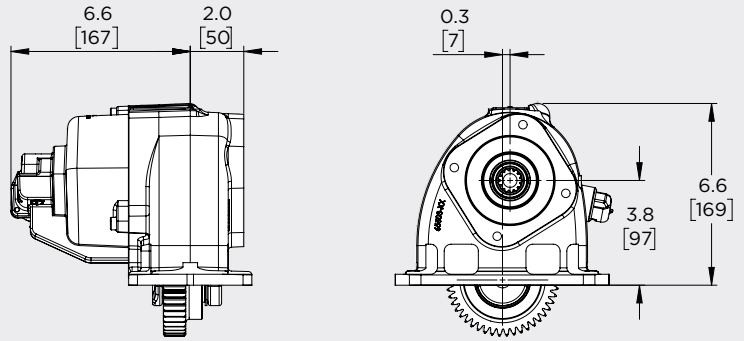
**PTO PERFORMANCE FOR FORD'S 10-SPEED TRANSMISSION**

- The F20 features patent-pending noise abatement technology, allowing for a quieter operating experience.

# OUTPUT OPTION DIMENSIONS

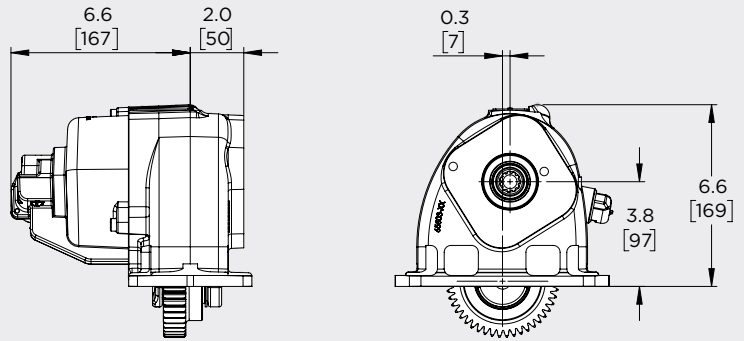
## SAE "A" 2-BOLT FLANGE

"BA" Output -  $\frac{7}{8}$ "-13T Shaft  
"TA" Output -  $\frac{3}{4}$ "-11T Shaft



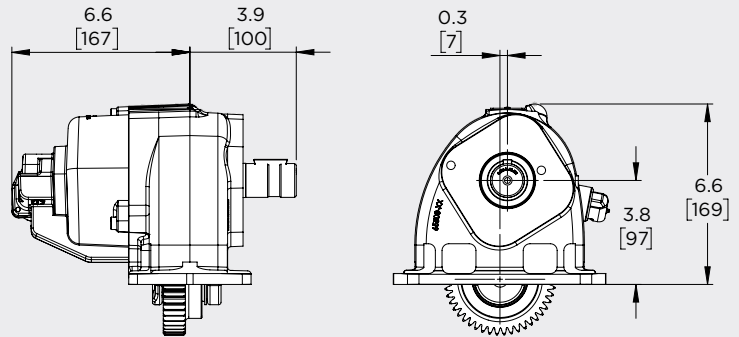
## MPP "N" MOUNT 2-BOLT FLANGE

"TN" Output -  $\frac{3}{4}$ "-11T Shaft



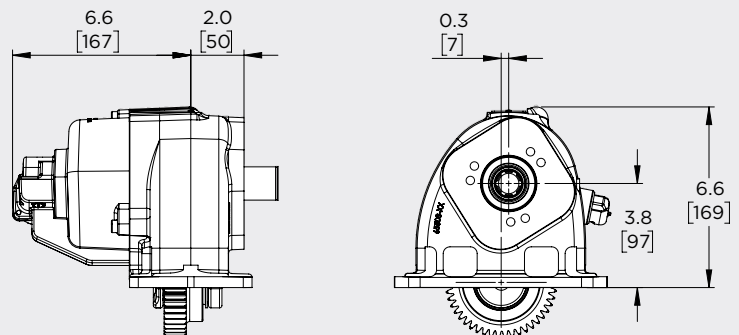
## REMOTE MOUNT

"1X" Output - 1  $\frac{1}{4}$ " Round Shaft  
w/ 5/16" x  $\frac{1}{4}$ " KEY



## UNI 222 MOUNT 3-BOLT FLANGE

"UU" Output - ISO 14 25mm 6T,  
21 UNI 222 3-Bolt Flange



"5" Arrangement shown – ONLY option for F20 Series PTOs

## COMPATIBLE PUMPS

### F SERIES

The pressure balanced bushing blocks and sleeve bearings provide both extra long life and high performance. Requires F20 output code "TN".

DISPLACEMENT (Cu.In./Rev)

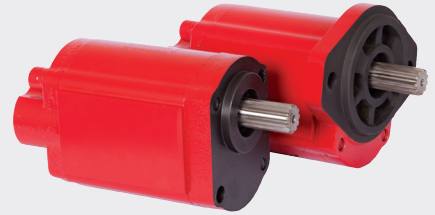
.24–2.01

GPM\* (@ 1000 RPM)

1–8.7

MAX PRESSURE (PSI)

3,625



### H SERIES

All standard H Series displacements will be available for F20 "BA" mount applications. Each unit will come standard with a SAE "A" 2-bolt mounting flange and 7/8" - 13T splined shaft.

DISPLACEMENT (Cu.In./Rev)

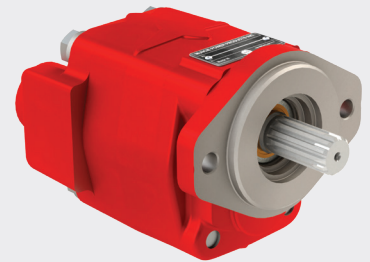
.62–2.48

GPM\* (@ 1000 RPM)

2.7–10.7

MAX PRESSURE (PSI)

3,500



### K SERIES

The K Series pumps feature bi-rotational, four-port construction. All series can be either direct mounted to a power take-off, or remote mounted and shaft driven. The pumps can also be used as high-speed, low-torque hydraulic motors.

DISPLACEMENT (Cu.In./Rev)

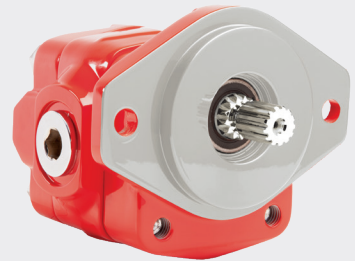
.98–3.94

GPM\* (@ 1000 RPM)

4.2–17.1

MAX PRESSURE (PSI)

3,000



Note: Use K Series pumps on 4x2 chassis applications ONLY

### PT2-025

The PT2-025 Series bent axis piston pump is a high efficiency pump designed for applications requiring higher pressures and low flow rates. Requires "UU" output code.

DISPLACEMENT (Cu.In./Rev)

1.56

GPM\* (@ 1000 RPM)

6.75

MAX PRESSURE (PSI)

6,525



*All flow rates are theoretical*



**Muncie®  
Power  
Products**

A Member of the Interpump Group

201 East Jackson Street • Muncie, Indiana 47305  
800-367-7867 • Fax 765-284-6991 • [info@munciepower.com](mailto:info@munciepower.com) • [www.munciepower.com](http://www.munciepower.com)  
Specifications are subject to change without notice. Visit [www.munciepower.com](http://www.munciepower.com)  
for warranties and literature. All rights reserved. © Muncie Power Products, Inc. (2020)

MP19-02 (Rev. 08-21)