



A40

A50 SERIES

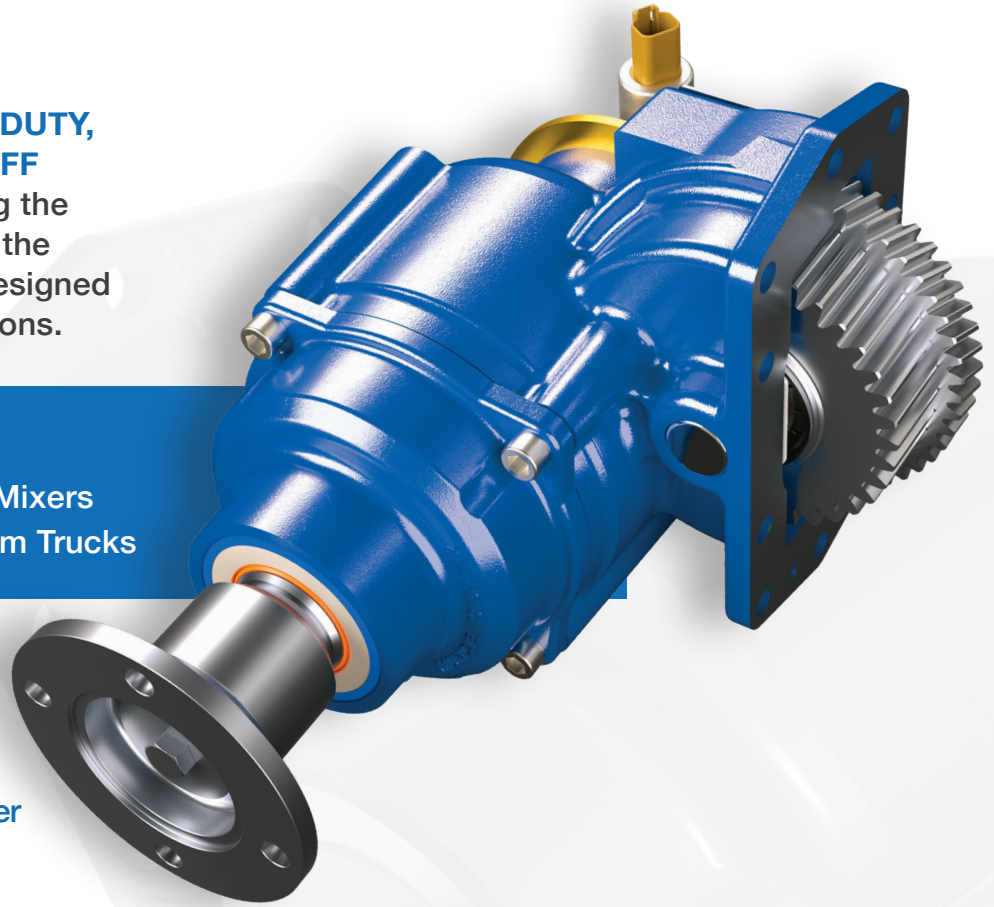
POWER TAKE-OFFS



**DESIGNED FOR
ALLISON 3000 & 4000
SERIES TRANSMISSIONS**

A40 SERIES

THE A40 SERIES IS THE HEAVY-DUTY, CLUTCH SHIFT POWER TAKE-OFF SOLUTION. Capable of extracting the maximum amount of torque from the transmission, the A40 Series is designed for the most demanding applications.



TARGET MARKETS

- Fire & Rescue
- Feed Mixers
- Refuse
- Vacuum Trucks

KEY FEATURES

- Heavy-duty torque ratings, up to 646 lbs.ft.
- Low-profile housing for better clearance on install
- Broad ratio coverage
- Compatible with EX Drive and Muncie Start®

MODEL NUMBER CONSTRUCTION

A40 - A10 05 - HX - 3 - CC - PX

PTO Series

A40 — Heavy-Duty, Clutch Shift 10-Bolt

Transmission Gear

A10 — Allison 3000/4000 Series

Ratio Options

05 — 0.63:1
06 — 0.67:1
07 — 0.71:1
08 — 0.76:1
09 — 0.86:1
10 — 0.97:1
11 — 1.10:1
12 — 1.17:1
13 — 1.24:1

Shift Options

HX — 12V Integral
HR — 12V Remote
SX — 12V Muncie Start® Integral
SR — 12V Muncie Start® Remote
JX — 24V Integral
JR — 24V Remote
XX — 12V Integral w/o Activation

Special Feature Options

PX — Standard
BS — Top Mount
PW — Standard Wet Spline
BW — Top Mount Wet Spline

Output Options

PB — SAE BB
CC — SAE C
21 — DIN 5462 Euro (Threaded)
II — DIN 5462
ZB — SAE C Shaft/SAE B Flange
CB — Extended Shaft
X2 — DIN 100 Companion Flange
X4 — 1410 Companion Flange

Arrangements Options

1 — Right Side Shaft Low
3 — Left Side Shaft Low
5 — No Offset (Straight Out From Opening)

Approximate Weight: 55 lbs. (25 Kg.)



A50 SERIES

THE A50 SERIES IS A 10-BOLT HEAVY-DUTY, CONSTANT DRIVE PTO using the full capacity of the transmission. It offers a wide variety of available ratios to power large variable displacement hydraulic pumps, refuse pumps, and other high torque-driven equipment.

TARGET MARKETS

- Refuse
- Snow & Ice
- Cranes
- Concrete Mixers

KEY FEATURES

- Heavy-duty torque ratings utilize the full capacity of the transmission
- Low-profile housing for better clearance on install
- Functional alternative to front engine PTO (FEPTO) applications
- Compatible with EX Drive

MODEL NUMBER CONSTRUCTION

A50 - A10 05 - MX - 3 - CC - PX

PTO Series

A50 — Heavy-Duty, Constant Drive 10-Bolt

Transmission Gear

A10 — Allison 3000/4000 Series

Ratio Options

05 — 0.63:1
 06 — 0.67:1
 07 — 0.71:1
 08 — 0.76:1
 09 — 0.86:1
 10 — 0.97:1
 11 — 1.10:1
 12 — 1.17:1
 13 — 1.24:1

Shift Option

MX — Constant Drive

Special Feature Options

PX — Standard
 BS — Top Mount
 PW — Standard Wet Spline
 BW — Top Mount Wet Spline

Output Options

CB — Muncie Extended Shaft
 CC — SAE "C" 1 1/4" -14T, SAE "C" 2- & 4-Bolt
 PB — SAE "BB" 1" -15T SAE "B" 2- & 4-Bolt
 ZB — SAE "C" 1 1/4" -14T, SAE "B" 2- & 4-Bolt
 II — DIN 5462
 21 — DIN 5462 Euro (Threaded w/M12 Tap Hole)
 X2 — 1 1/2" 10T, DIN 100 Companion Flange
 X4 — 1 1/2" 10T, 1410 Companion Flange

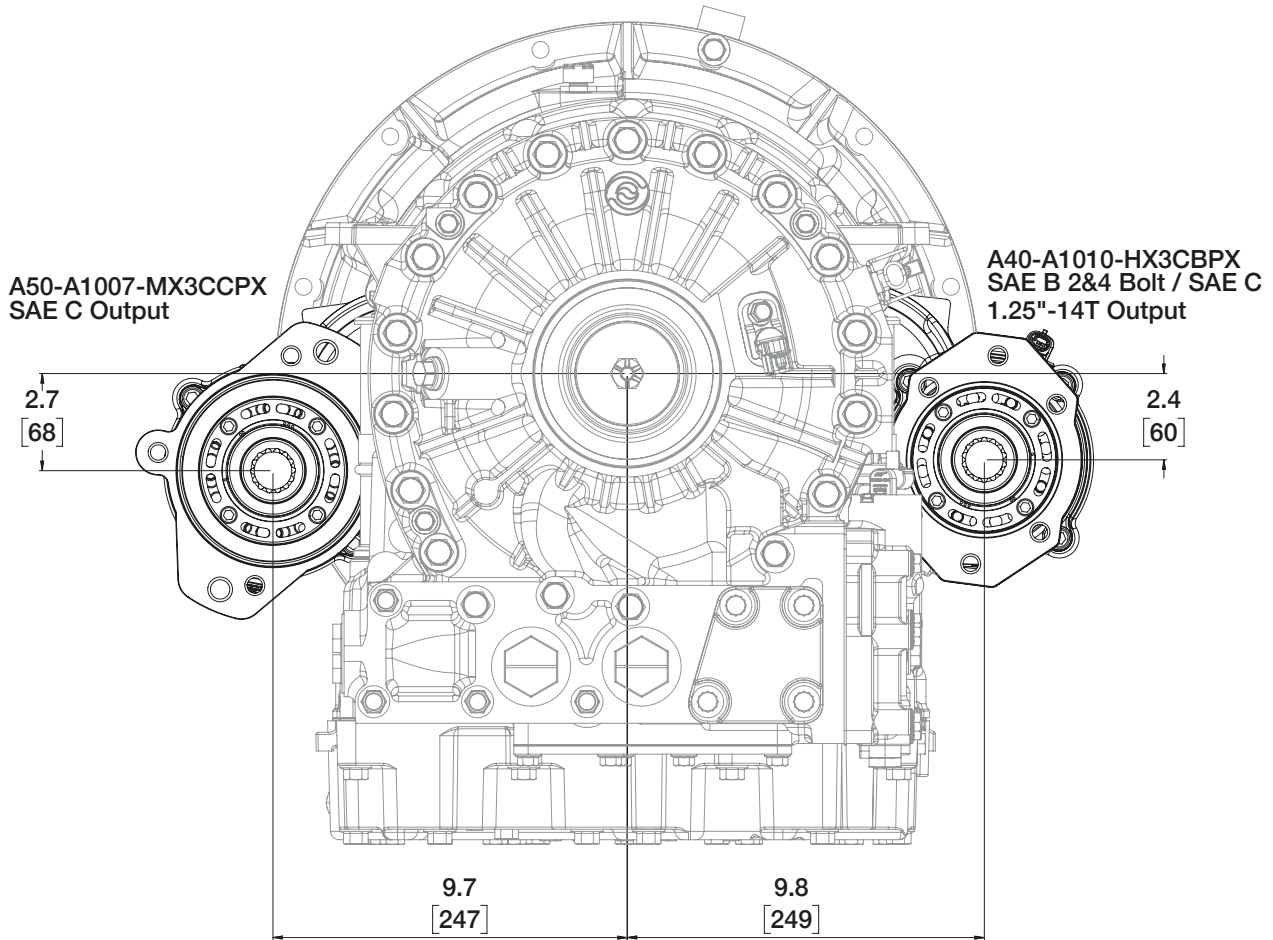
Arrangements Options

1 — Right Side Shaft Low
 3 — Left Side Shaft Low
 5 — No Offset (Straight Out From Opening)

Approximate Weight: 46 lbs. (21 Kg.)

ALLISON 3000 SERIES

SIDE/SIDE

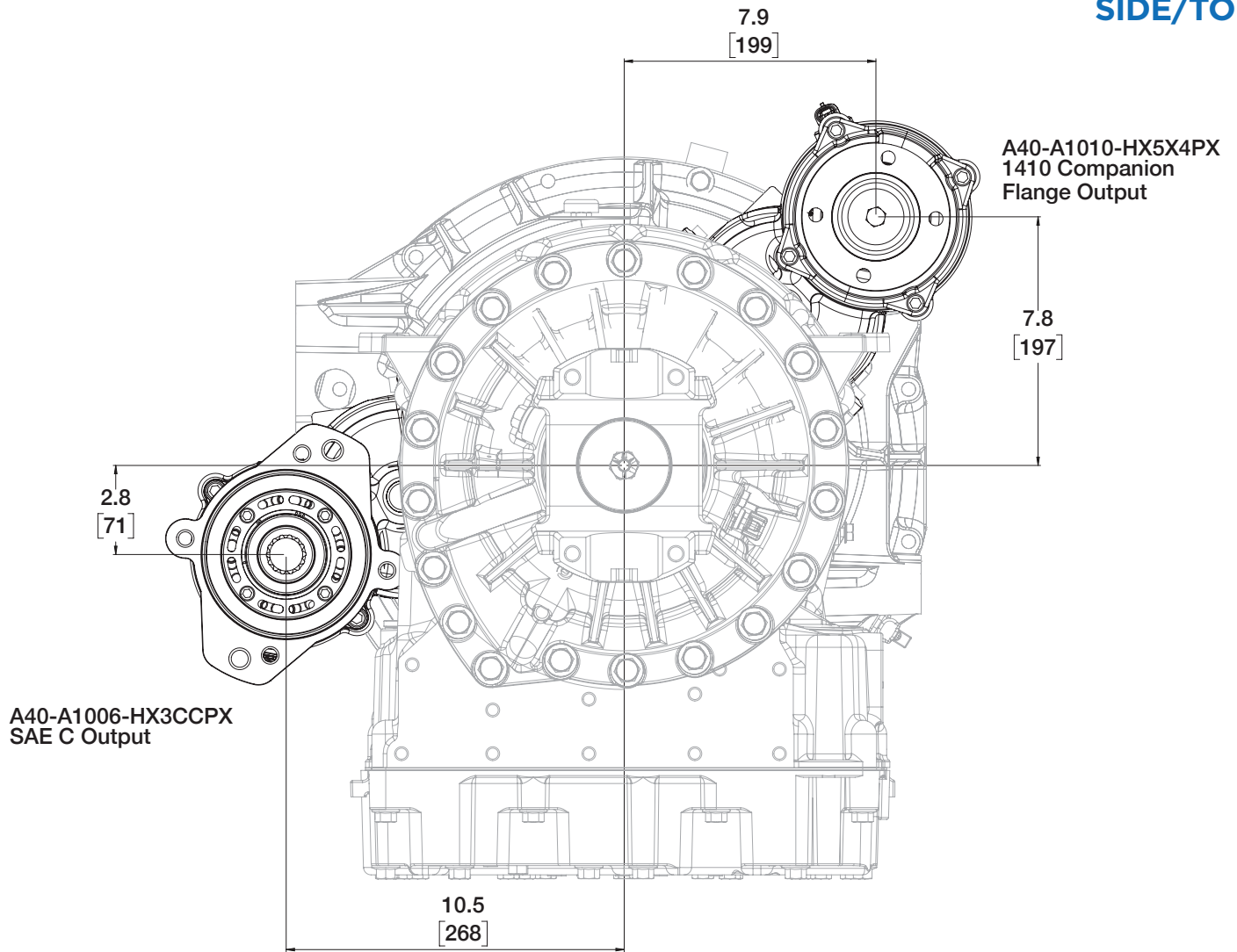


SPECIFICATIONS

RATIOS	OUTPUT SPEED % ENGINE SPEED	TORQUE RATING CONTINUOUS (lbs.ft.)	TORQUE RATING CONTINUOUS (Nm)	HORSEPOWER @ 1,000 RPM	KW @ 1,000 RPM
05	85%	571	774	109	81
06	91%	535	725	102	76
07	97%	502	681	96	72
08	103%	471	639	90	67
09	117%	416	564	79	59
10	132%	368	499	70	52
11	149%	325	441	62	46
12	159%	306	415	58	43
13	169%	287	389	55	41

ALLISON 3000 EVS SERIES

SIDE/TOP

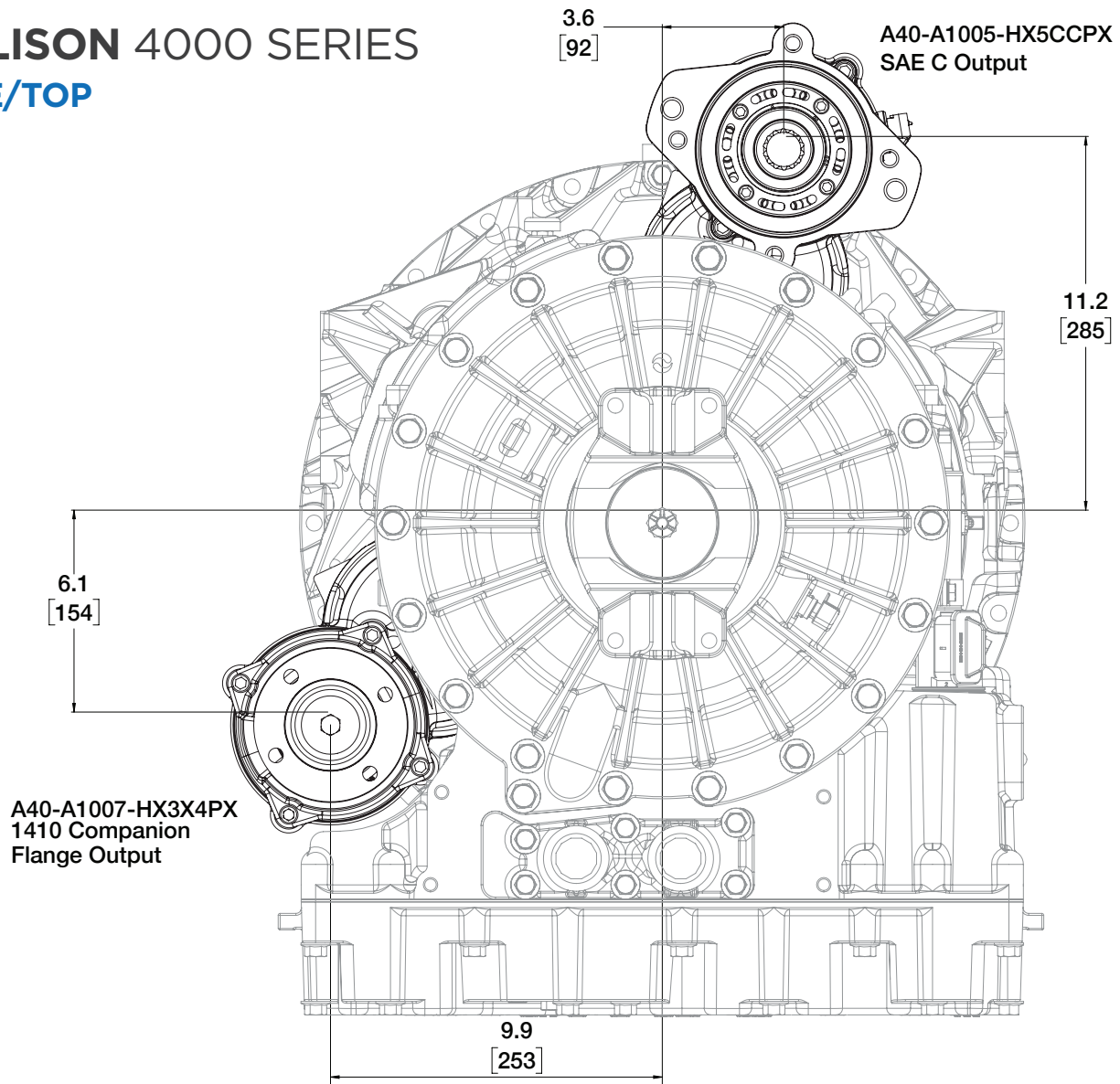


SPECIFICATIONS

RATIOS	OUTPUT SPEED % ENGINE SPEED	TORQUE RATING CONTINUOUS (lbs.ft.)	TORQUE RATING CONTINUOUS (Nm)	HORSEPOWER @ 1,000 RPM	KW @ 1,000 RPM
05	104%	646	876	123	92
06	111%	605	820	115	86
07	118%	568	770	108	81
08	126%	533	723	101	75
09	142%	471	639	90	67
10	161%	416	564	79	59
11	182%	368	499	70	52
12	194%	346	469	66	49
13	206%	325	441	62	46

ALLISON 4000 SERIES

SIDE/TOP



SPECIFICATIONS

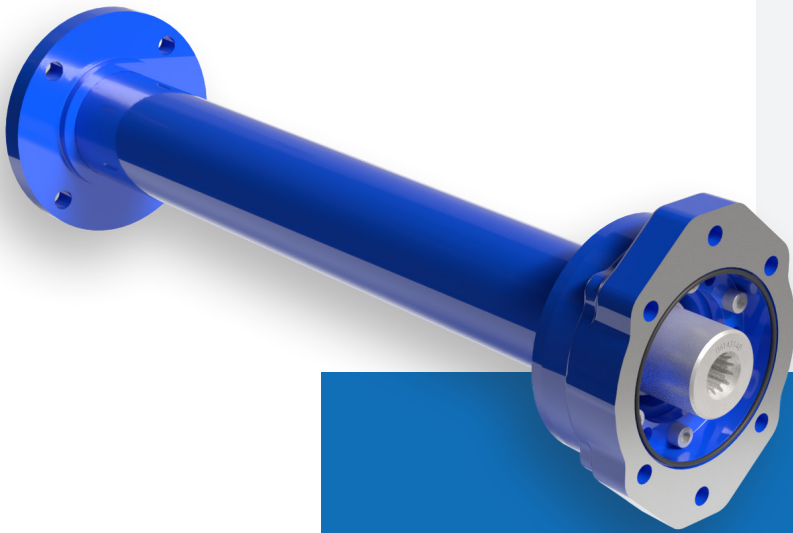
RATIOS	OUTPUT SPEED % ENGINE SPEED	TORQUE RATING CONTINUOUS (lbs.ft.)	TORQUE RATING CONTINUOUS (Nm)	HORSEPOWER @ 1,000 RPM	KW @ 1,000 RPM
05	121%	565	766	108	81
06	129%	530	719	101	75
07	138%	497	674	95	71
08	147%	467	633	89	66
09	166%	412	559	78	58
10	188%	364	494	69	51
11	213%	322	437	61	45
12	226%	303	411	58	43
13	241%	284	385	54	40

EX DRIVE SHAFT EXTENSIONS

The EX Drive eliminates the need for lengthy driveline installations and is designed to fit Allison 3000 and 4000 Series transmissions, whether they include a retarder or cooler. It allows for large gear or piston pumps to be directly mounted. By providing maximum torque from the PTO, a shaft extension is available for the A40 and A50 Series PTOs.

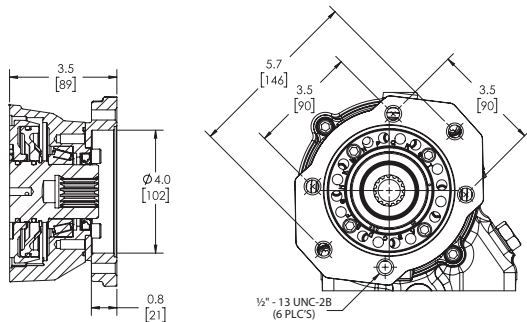
COMPATIBLE OUTPUTS

Available with SAE or DIN direct mount pump outputs



OUTPUT DIMENSIONS

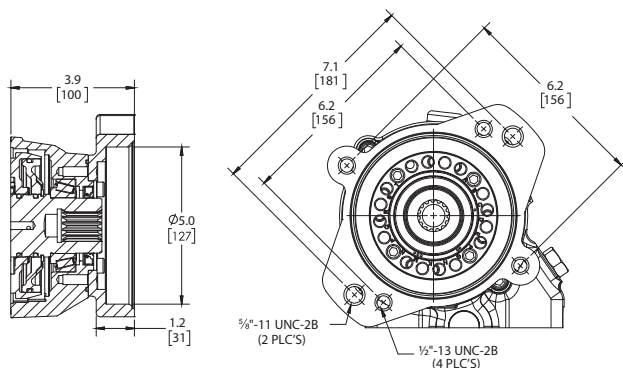
SAE OPTIONS



“CB” OUTPUT – Special Shaft Extension Flange

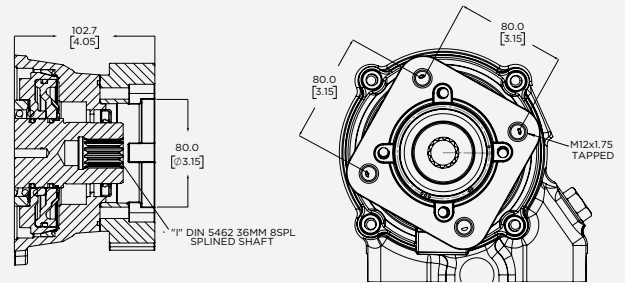
“PB” OUTPUT – SAE “BB” 1”-15T, SAE “B” 2- & 4-Bolt

“ZB” OUTPUT – SAE “C” 1¼”-14T, SAE “B” 2- & 4-Bolt



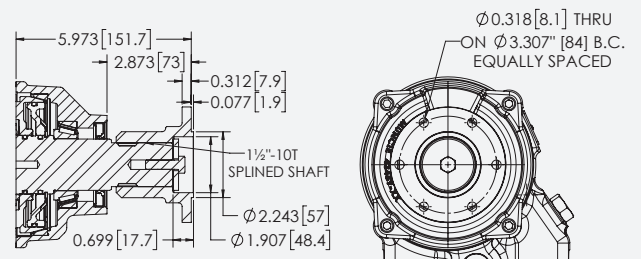
“CC” OUTPUT – SAE “C” 1¼”-14T, SAE “C” 2- & 4-Bolt

DIN OPTIONS

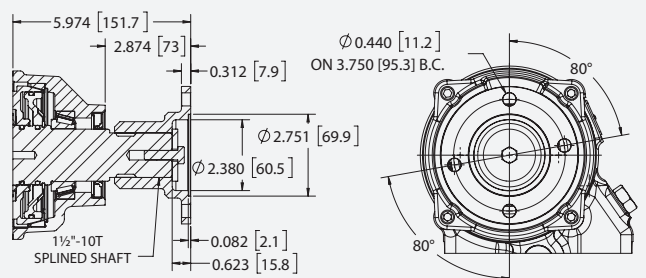


“II” OUTPUT - DIN 5462

“21” OUTPUT – DIN 5462 EURO with M12 Tap Hole



“X2” OUTPUT – 1½”-10T, DIN Companion Flange



“X4” OUTPUT – 1½”-10T, 1410 Companion



A Member of the Interpump Group

MP25-02 (Rev. 05-26)

201 East Jackson Street, Muncie, Indiana 47305
800-367-7867 • Fax: 765-284-6991 • info@munciepower.com

Specifications are subject to change without notice. Visit www.munciepower.com
for warranties and literature. All rights reserved. © Muncie Power Products, Inc. (2025)