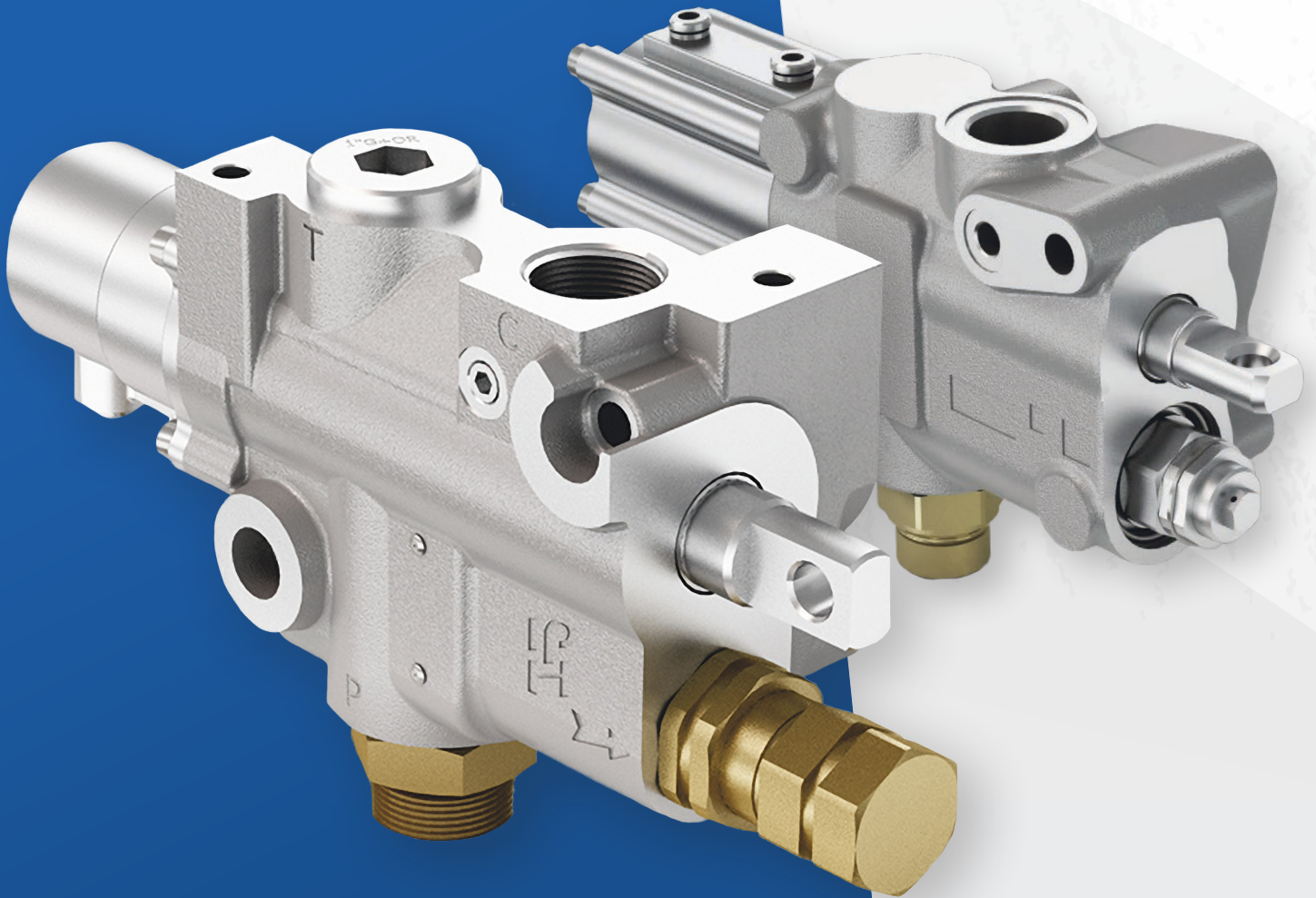


# D140 D242 SERIES

TIPPER VALVES



**HIGH-QUALITY LINE OF TIPPER VALVES**  
BY INTERPUMP HYDRAULICS

# D140 SERIES

The D140 Series tipper valve is designed to be lightweight with high working pressure. This tipper valve can easily be mounted to the frame or chassis.

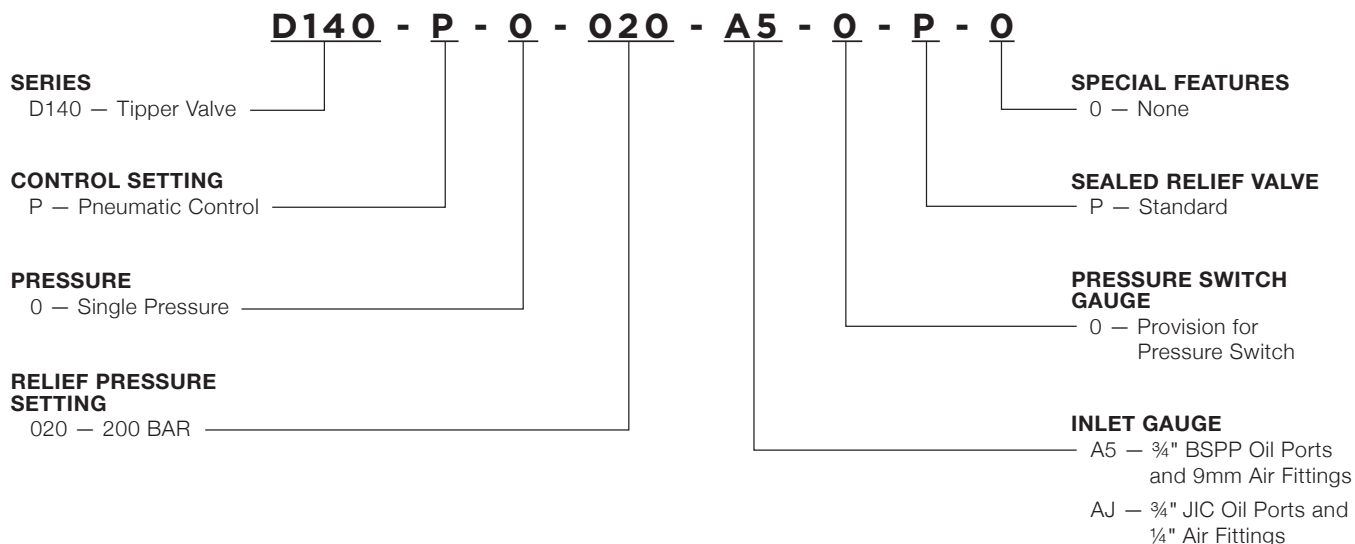
## KEY FEATURES

- Pneumatically operated tipper valve
- Performs tipping, fast lowering, and progressive lowering
- End-of-stroke rope
- Built-in inlet check valve and adjustable relief valve
- Manometer connection

## TARGET MARKETS

- Commercial Vehicles
- Agriculture
- Dump & Construction
- Bulk Handling
- Marine
- Mining
- Refuse

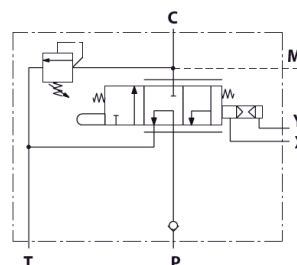
## MODEL NUMBER CONSTRUCTION



## SPECIFICATIONS

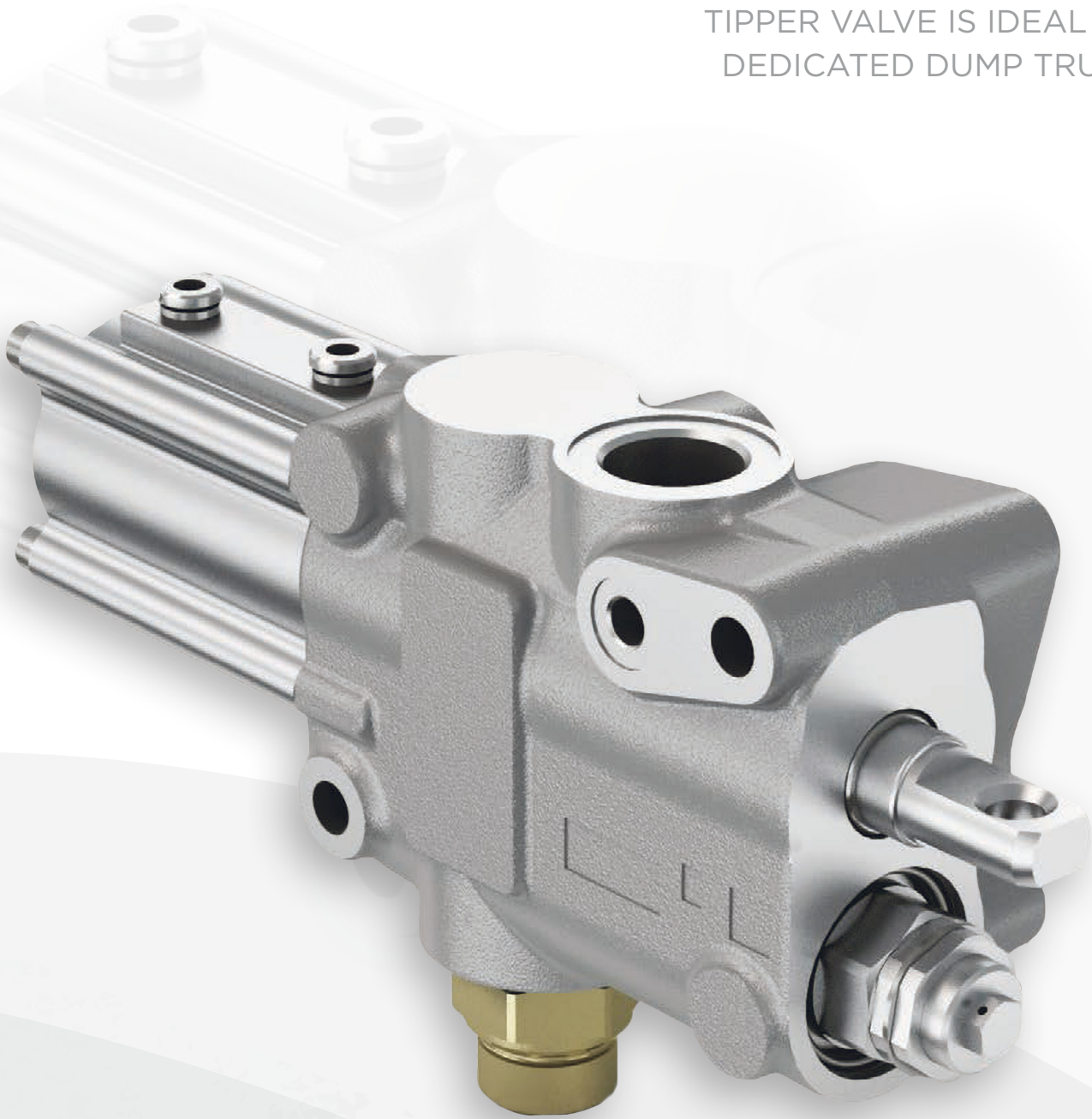
FLOW RATE	OPERATING TEMPERATURES
37 GPM (140 LPM)	-13° F to +176° F (-25° C to +80° C)
MAX. WORKING PRESSURE	VISCOSITY RANGE
5,076 PSI (350 BAR)	12–100 cSt
TANK PORT MAX. PRESSURE	APPROXIMATE WEIGHT
435 PSI (30 BAR)	11.24 lbs. (5.1 Kg.)
MAX. PNEUMATIC PRESSURE	
145 PSI (10 BAR)	

## CONTROL SETTING



## **THE D140 SERIES**

TIPPER VALVE IS IDEAL FOR  
DEDICATED DUMP TRUCKS



# D242 SERIES

The D242 Series is a versatile tipper valve that is ideal for applications ranging from dump trailers to live-floor to roll-off. Its high flow rate and high-pressure capabilities allow for larger loads.

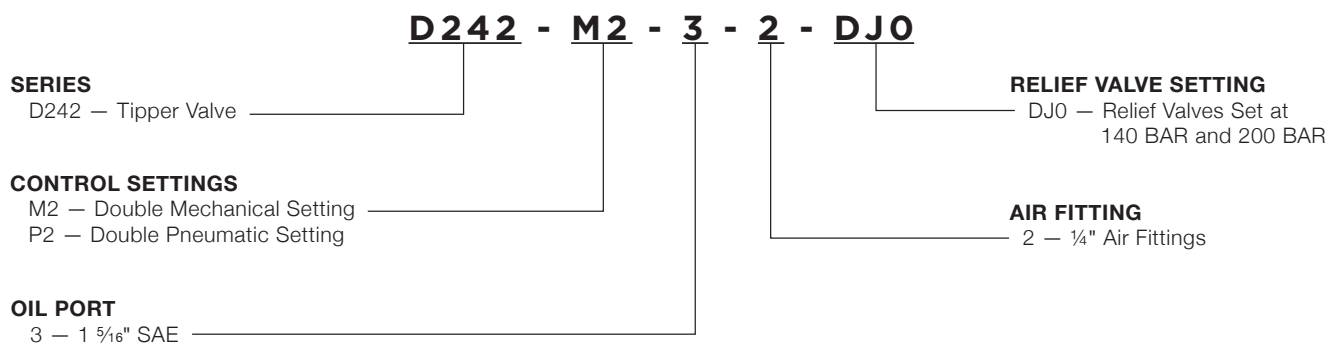
## KEY FEATURES

- Three-way air operated control valve: pump, cylinder, tank
- Three positions: hold, tipping, and lowering
- Built-in check valve
- Variable lowering speed with suitable air control
- Relief valve on pump port
- Manometer connection

## TARGET MARKETS

- Commercial Vehicles
- Agriculture
- Dump & Construction
- Bulk Handling
- Marine
- Mining
- Refuse

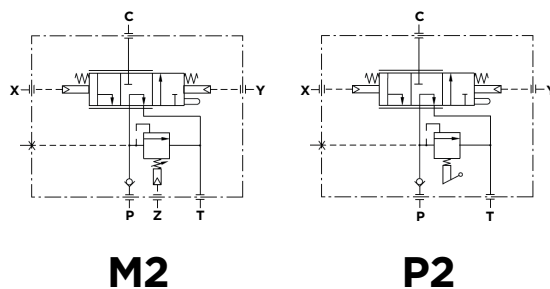
## MODEL NUMBER CONSTRUCTION



## SPECIFICATIONS

FLOW RATE	OPERATING TEMPERATURES
42–63 GPM (160–240 LPM)	-13° F to +176° F (-25° C to +80° C)
LOWERING MAX. FLOW RATE	VISCOSITY RANGE
66–79 GPM (250–300 LPM)	12–100 cSt
MAX. WORKING PRESSURE	APPROXIMATE WEIGHT
5,076 PSI (350 BAR)	18.08 lbs. (8.2 Kg.)
TANK PORT MAX. PRESSURE	MAX. PNEUMATIC PRESSURE
435 PSI (30 BAR)	65–174 PSI (4.5–12 BAR)

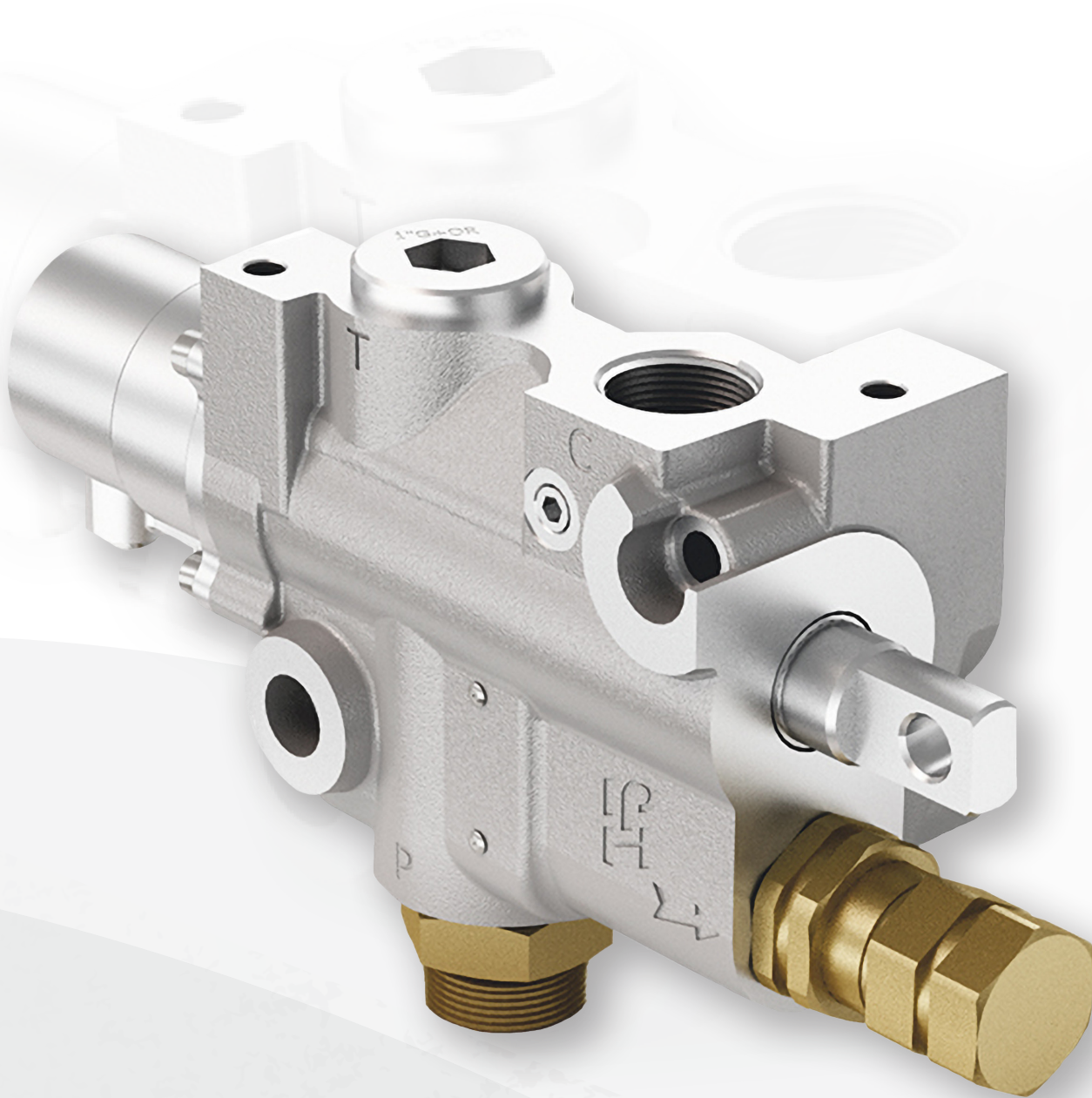
## CONTROL SETTINGS





## THE D242 SERIES

TIPPER VALVE IS PERFECT  
FOR TRUCKS THAT NEED TO  
SWITCH BETWEEN TRAILERS



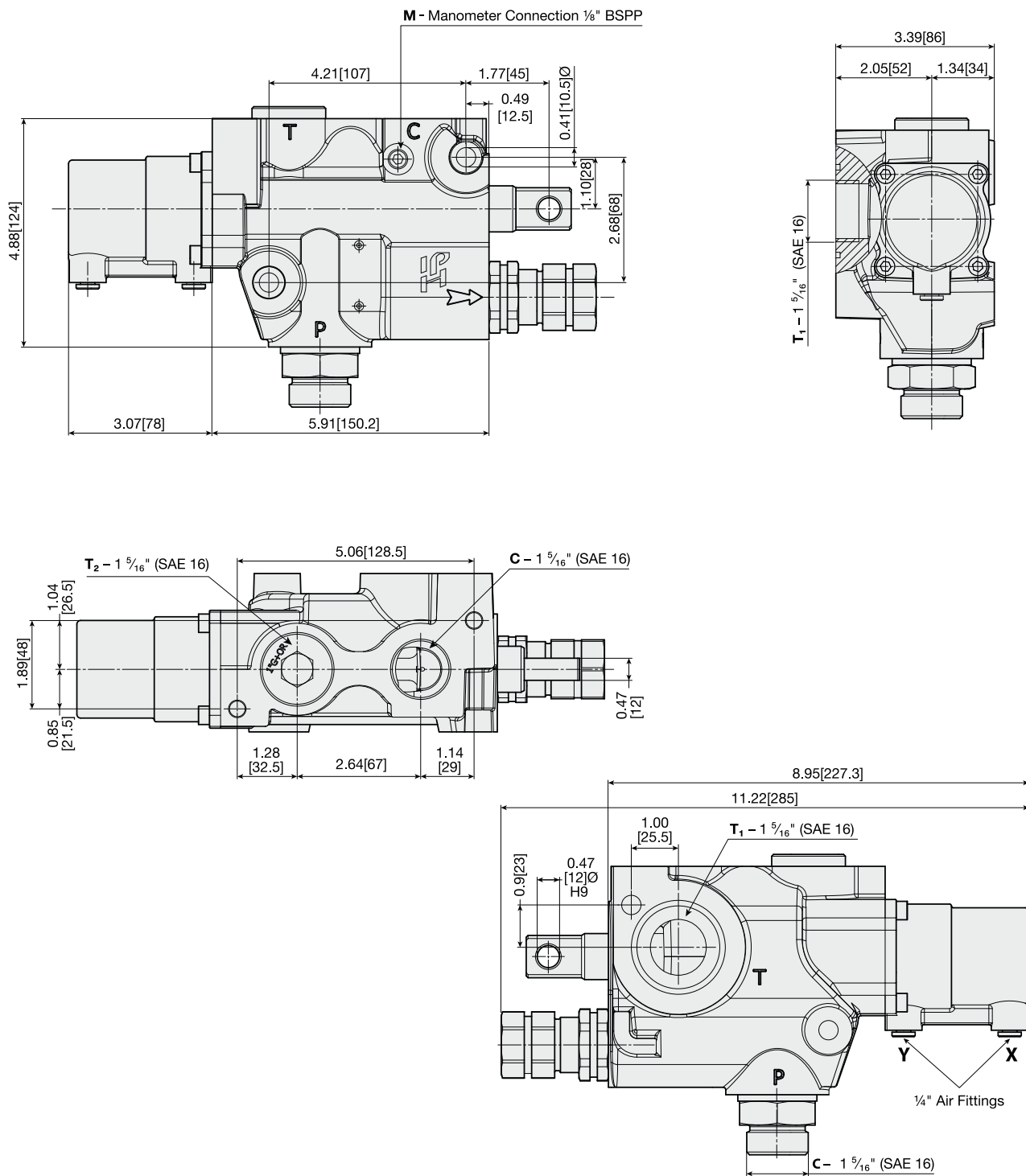
The technical drawing illustrates the 6800 Series Hydraulic Valve from three perspectives: front, side, and top views. The front view shows a complex casting with multiple ports and mounting features. Key dimensions include a total width of 10.09 [256.4] inches, a main body height of 4.14 [105.3] inches, and a base height of 1.28 [32.5] inches. The side view highlights the valve's profile with a total length of 5.07 [128.9] inches and a mounting flange diameter of 0.41 [10.5] inches. The top view provides a planar perspective of the valve's footprint, showing a total width of 2.70 [68.7] inches and a depth of 1.05 [26.7] inches.

View	Dimension	Inches	Millimeters
Front View	Total Width	10.09	[256.4]
	Main Body Height	4.14	[105.3]
	Base Height	1.28	[32.5]
	Mounting Flange Diameter	0.41	[10.5]
	Port T Diameter	0.47	[11.9]
	Port P Diameter	0.55	[14]
	Port P Thread Size	T - 3/4"	BSPP
	Port P Thread Size	P - 3/4"	BSPP
	Port P Thread Size	1.06	[27]
	Port P Thread Size	1.41	[35.85]
Side View	Total Length	5.07	[128.9]
	Mounting Flange Diameter	0.41	[10.5]
	Port P Diameter	0.55	[14]
Top View	Total Width	2.70	[68.7]
	Depth	1.05	[26.7]
	Port P Diameter	0.39	[10]



**Note:** Oil ports **C**, **P**, & **T** can be changed to 3/4" JIC and air ports **X** and **Y** to 1/4" per part number construction (The D140 Series only).

# D242 SERIES DIMENSIONS





**Muncie®  
Power  
Products**

*A Member of the Interpump Group*

MP25-06 (Rev. 08-25)

201 East Jackson Street, Muncie, Indiana 47305  
800-367-7867 • Fax: 765-284-6991 • [info@munciepower.com](mailto:info@munciepower.com)  
Specifications are subject to change without notice.  
Visit [www.munciepower.com](http://www.munciepower.com) for warranties and literature.  
All rights reserved. © Muncie Power Products, Inc. (2025)