

REMOTE VALVE

CONTROL SYSTEMS



MUNCIE POWER'S RVC JOYSTICK SYSTEM

Allows for in-cab direct control of PTOs, pumps, and valves with a push-pull cable. Cable construction includes steel inner member with plastic liner for smooth movement, armored conduit strands for strength and flexibility, and an outer cover for sealing and swaged end fittings. Totally enclosed actuation hook-up kits provide protection from the elements. A variety of applications can use these RVC systems: dump bodies, snow & ice control, cranes, and agricultural equipment.



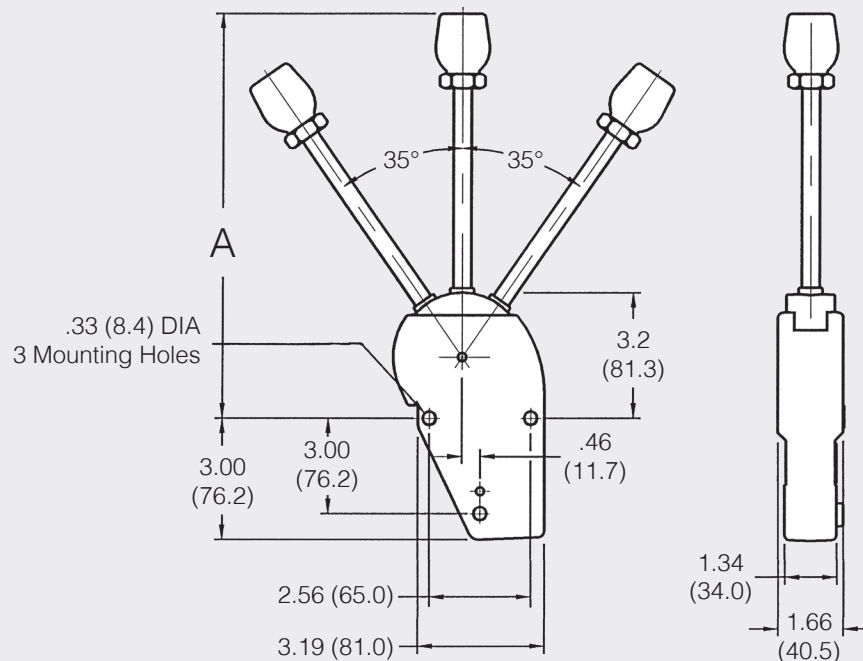
KEY FEATURES

- Choose from Single Axis Center Lock, End Lock, or Non-Locking versions
- Dual axis version for two function control
- Controls bank together in a common console (optional)
- Bonnet Style hook up kits for a multitude of manufacturers
- Decal sheet for application function identification included
- Eliminates clutter and exposed lever-related maintenance
- Sealed water proof heavy duty cables
- Fast, easy, and clean installation
- Safe and positive feel preferred by most operators
- Control is secure and absolute

CABLE INSTALLATION SUGGESTIONS

1. Keep cable path as direct as possible. If bends are required, minimum bend radius should be 8".
2. Avoid heat sources e.g. exhaust pipe or other areas where temperatures can exceed 225° F.
3. Avoid pinch areas where cable could be crushed or deformed.
4. Avoid kinking or stretching of cable. Always allow extra length for flexing when mounted to moving parts of equipment.

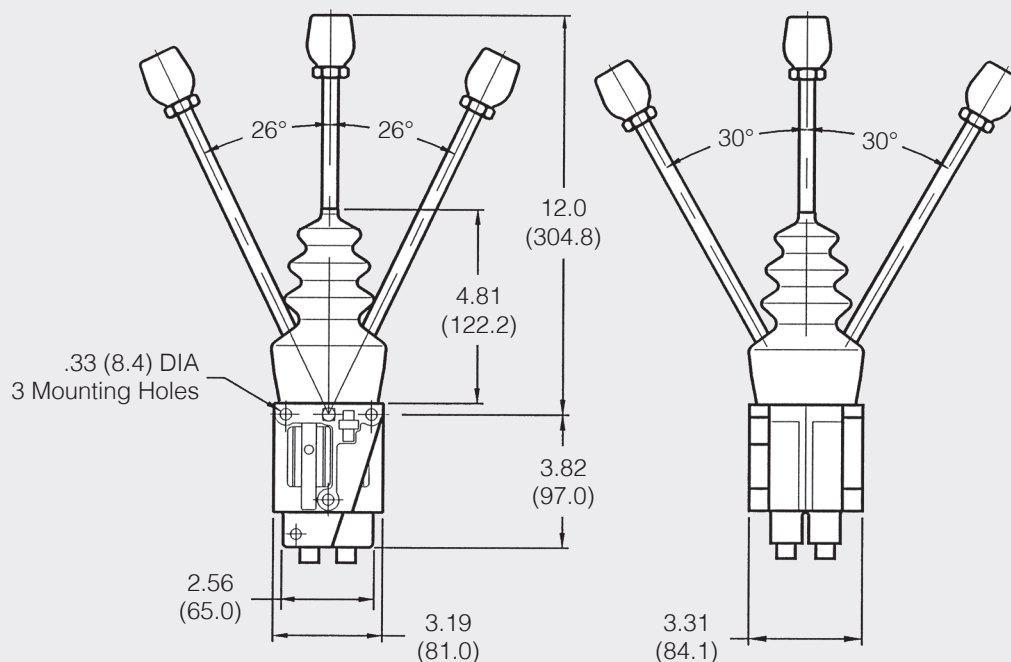
SINGLE AXIS DIMENSIONS



| DESCRIPTION | PART NO. | DIM. A IN (MM) |
|----------------|-----------|-------------------|
| Non-Locking | RVC-SCX-1 | 12.25 (311.15) |
| Center Locking | RVC-SCL-2 | 8.75 (222.2) |
| End Locking | RVC-SEL-2 | 8.75 (222.2) |

Max. Load 100 lbs. Cable Travel (From Center) ± 0.81

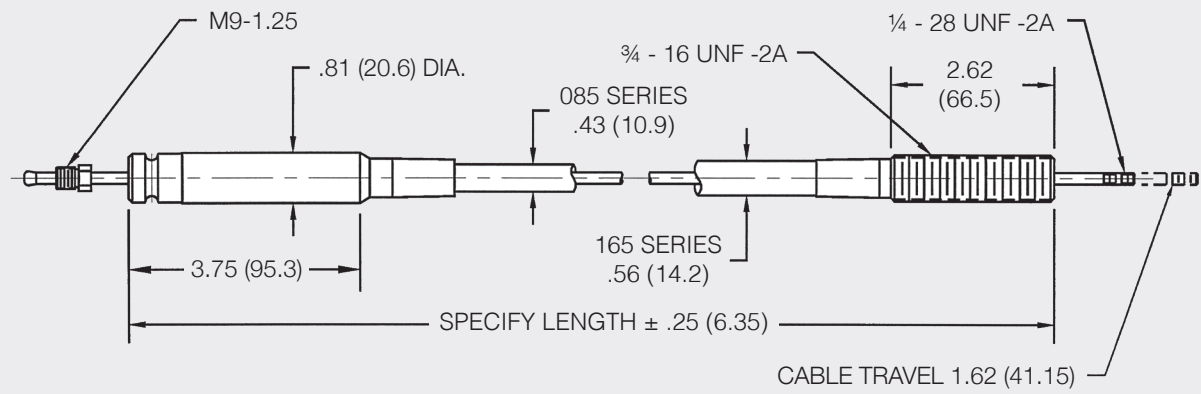
DUAL AXIS DIMENSIONS



| DESCRIPTION | PART NO. |
|-------------|-----------|
| Non-Locking | RVC-DXA-1 |

Max. Load 100 lbs. Cable Travel (From Center) ± 0.47

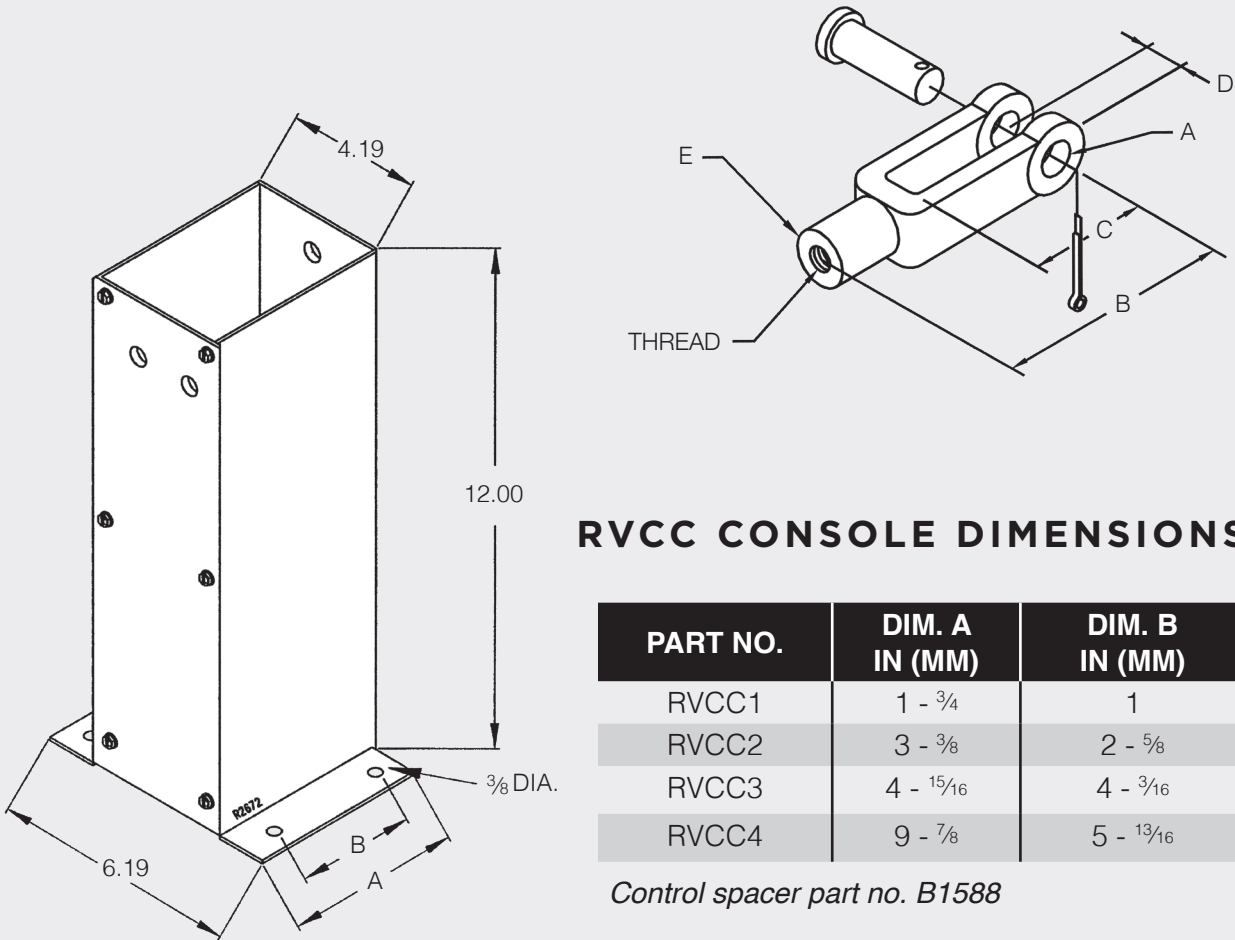
PUSH-PULL CABLE DIMENSIONS



CLEVIS ATTACHMENT KIT DIMENSIONS*

| PART NO.* | THREAD | DIM. A IN (MM) | DIM. B IN (MM) | DIM. C IN (MM) | DIM. D IN (MM) | DIM. E IN (MM) |
|-----------|------------|-------------------|-------------------|-------------------|-------------------|-------------------|
| 85CLK-250 | 1/4-28 UNF | .25 (6.4) | 2.00 (50.8) | 1.31 (33.3) | .29 (7.4) | .44 (11.2) |
| 85CLK-313 | 1/4-28 UNF | .31 (7.9) | 2.25 (57.2) | 1.44 (36.6) | .34 (8.6) | .50 (12.7) |
| 85CLK-375 | 1/4-28 UNF | .38 (9.7) | 2.50 (63.5) | 1.63 (41.4) | .43 (10.9) | .45 (11.4) |
| 85CLK-500 | 1/4-28 UN | .51 (12.9) | 2.92 (74.2) | 1.76 (44.7) | .56 (14.2) | .81 (20.6) |

Note: *Clevis pin and cotter pin included in part number (not sold separately).



RVCC CONSOLE DIMENSIONS

| PART NO. | DIM. A IN (MM) | DIM. B IN (MM) |
|----------|-------------------|-------------------|
| RVCC1 | 1 - 3/4 | 1 |
| RVCC2 | 3 - 3/8 | 2 - 5/8 |
| RVCC3 | 4 - 15/16 | 4 - 3/16 |
| RVCC4 | 9 - 7/8 | 5 - 13/16 |

Control spacer part no. B1588

MODEL NUMBER CONSTRUCTION

RVC-SCX-1-085 12-072

Basic Series

RVC

Lever Position

SCX — Single — Non-Locking Control
 SCL — Single — Center Locking Control
 SEL — Single — End Locking Control
 DXA — Dual — X-Axis Control

Design Number

1 — Silver
 2 — Black

Cable Series*

085 — .125 Stainless Steel Inner (1×13 Strand)
 165 — .187 Stainless Steel Inner (1×19 Strand)
(call for stock lengths)

Standard Cable Length Inches (085 Series)

048 — Standard
 060 — Standard
 072 — Standard
 084 — Standard
 096 — Standard
 120 — Standard
 144 — Standard
 XXX — Other lengths can be built
 for immediate shipment

Hook-Up Kit**

10 — Muncie 60/61, 65, Commercial
 A20 Front Entry
 11 — Muncie 60/61, 65, Commercial
 A20 Rear Entry (Spring Return Only)
 12 — Gresen 25P, CP, CS, V20, V42
 Energy CVSD, CVP, CVA200
 13 — Rexroth 30-S2, MP-18
 20 — Gresen V30, Husco 6000 Racine
 3/8 Inch
 25 — Gresen V12, Parker VDP12 Racine
 1/2 Inch
 28 — Cross BA, BC, CA, CD
 29 — Muncie 90/91, Commercial A35
 Rear Entry
 30 — Husco 5000
 31 — Muncie 31V, Commercial KA-18
 Front Entry
 31R — Muncie 31V, Commercial KAA-18
 Rear Entry
 33 — Brand 34 Series
 34 — Gresen V15
 36 — Muncie 90/91, Commercial A35
 Front Entry
 38 — Muncie "E" Series, Commercial
 C-101, C-102 Dump Pump
 39 — Munson Tyson HV-07
 41 — Muncie "S" Series, Commercial
 G-105 For Double Acting Hoists
 44 — Muncie TG PTO (Use Lever Shift
 Cover "R" PN: 16TA9455)
 45 — Muncie Selector Valve
 (MSV-16 Series)
 86 — Gresen V10
 106 — Muncie "S" Series, Commercial
 G-101, G-102 For Single Acting Hoist
 007 — Husco SCX180, SCX3000
 111 — Muncie L125
 121 — Muncie V250
 233 — Muncie V080, V130
 330 — Muncie V050

HOOK-UP KIT ONLY

RVC-HK-12

Basic Series

RVC

Lever Position

HK — Hook-Up Kit

Hook-Up Kit*

12 — Gresen 25P, CP, CS, V20, V42
 Energy CVSD, CVP, CVA200

Notes:

*Call for stock lengths.

**For kits not listed and when a remote bulkhead
 attachment is desired, use clevis kits.



A Member of the Interpump Group

MP95-04 (Rev. 03-22)

201 East Jackson Street, Muncie, Indiana 47305
 800-367-7867 • Fax: 765-284-6991 • info@munciepower.com

Specifications are subject to change without notice. Visit www.munciepower.com
 for warranties and literature. All rights reserved. © Muncie Power Products, Inc. (2010)