

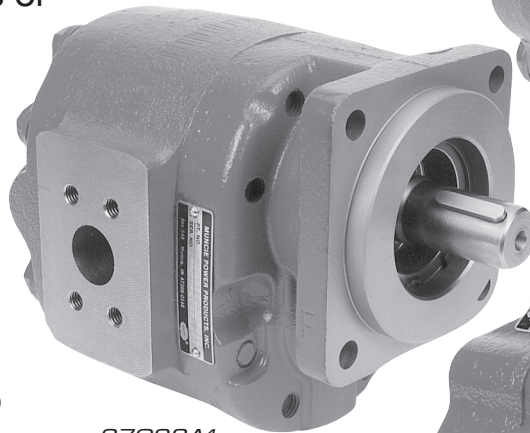


REPLACEMENT PUMPS FOR REFUSE EQUIPMENT

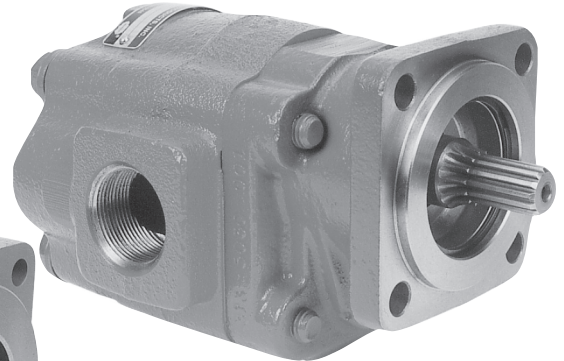
REPLACES ORIGINAL EQUIPMENT MANUFACTURERS PUMPS

Muncie Power Products is pleased to announce a line of products to replace existing OEM pumps. The units externally bolt on and fit in the exact same location with no modifications or changes required.

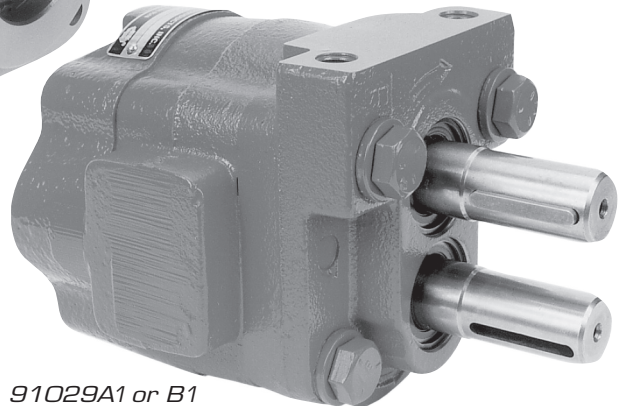
Geared to fleets and line companies that need replacements immediately to eliminate equipment down time. All pumps are preassembled, 100% tested, and broken in to rigid manufacturing specifications to guarantee performance right out of the box. All backed with the quality and service you expect when you see the Muncie name.



97023A1



97022A1 OR B1
97022APR1 OR BPR1
99072APR1



91029A1 or B1

PUMP APPLICATIONS

Muncie's replacement pumps can meet all your application needs such as:

- FRONT LOADERS • REAR LOADERS • ROLL OFFS •

PUMP FEATURES

Muncie provides quality pumps, competitively priced, and loaded with standard features such as:

- ALL CAST IRON CONSTRUCTION
 - ROLLER BEARING DESIGN
 - SOLID ONE PIECE SHAFTS
 - 100% TESTED BEFORE SHIPMENT - NO BREAK IN REQUIRED
 - PUMPS FULLY INTERCHANGE WITH UNITS BUILT BY COMMERCIAL INTERTECH (PARKER) AND PERMCO
 - DOWEL PIN CONSTRUCTION FOR ADDED SAFETY FACTOR
 - FULL ONE YEAR WARRANTY
-

TWIN SHAFT REMOTE MOUNT

91029A1 & B1

Based on Muncie's "L" Series Pump. Interchanges with OEM Pumps built by Commercial Intertech, Permco, Etc. that have either a 1¼ or 2¼ Inch Gear Width.

- TWIN 1½" DIA. SHAFTS • 1½ N.P.T. REAR INLET PORT • INTEGRAL MOUNTING PAD •
- ¾ O.D.T. REAR PRESSURE PORT • HIGH PRESSURE SHAFT SEALS • BI-ROTATIONAL INPUT •

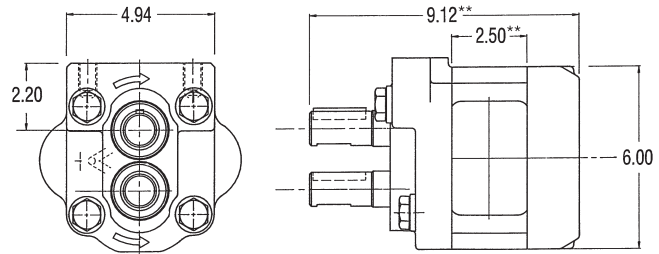
SPECIFICATIONS

MODEL	DISPL	MAX PSI	MAX RPM	GPM*
91029A1	4.46 cu.in.	3,000	2750	19
91029B1	5.73 cu.in.	2,500	2100	25

* GPM @ 1000 RPM

INTERCHANGE LIST

MODEL	COMM. INTER.	PERMCO	HEIL
91029A1	C151-1¾ GW	CHR12	219-1738
91029B1	C151-2¼ GW	CHR640	219-1748



**Dimensions for 91029B are ½" Longer.
Dimensions in Inches • Approximate Weight: 49 Lbs. (22.3 Kg)

PTO DIRECT MOUNT

97022A1 & B1 97022APR1 & BPR1 99072APR1

Based on Muncie's "L" Series Pump. Interchanges with OEM Pumps built by Commercial Intertech or Permco with a 2-1/2 Inch Gear Width.

- CHOICE OF TWO SHAFT TYPES • DUAL 1-1/4 NPT PORTS • DOWEL PIN CONSTRUCTION •
- HIGH PRESSURE SHAFT SEALS • SAE "B" 4 BOLT MOUNTING FLANGE • BI-ROTATIONAL •

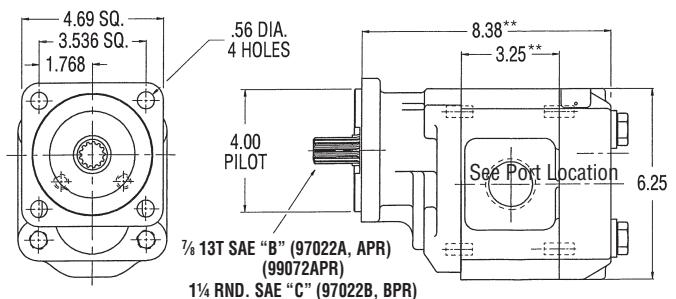
SPECIFICATIONS

MODEL	DISPL	MAX PSI	MAX RPM	GPM*	PORT LOC
97022A1 & B1	6.37 cu.in.	2,500	1500	27	SIDE
97022APR1 & BPR1	6.37 cu.in.	2,500	1500	27	REAR
99072APR1	5.20 cu.in.	2,500	1750	23	REAR

* GPM @ 1000 RPM

INTERCHANGE LIST

MODEL	COMM. INTER.	PERMCO
97022A1 & B1	P50/51-2½ GW	P5000/5100-2½ GW
99072APR1	P50/51-2 GW	P5000/5100-2 GW



Dimensions in Inches • Approximate Weight: 49 Lbs. (22.3 Kg)
**Dimensions for 99072APR are ½" Shorter.

FRONT MOUNT ENGINE DRIVEN - DRY VALVE

97023A1

Based on Muncie's "M" Series Pump. Interchanges with OEM Pumps built by Comm. Intertech or Permco with a 2-1/4 Inch Gear Width.

- 1¼ RND. SAE "C" SHAFT • 2" SPLIT FLANGE INLET PORT • 1¼ SPLIT FLANGE PRESSURE PORT •
- DRY VALVE SHAFT SEALS • SAE "C" 4-BOLT MOUNTING FLANGE • SPECIAL WEAR PLATES FOR NOISE CONTROL •

SPECIFICATIONS

MODEL	DISPL	MAX PSI	MAX RPM	GPM*
97023A1	9.27 cu.in.	2,500	2,500	40

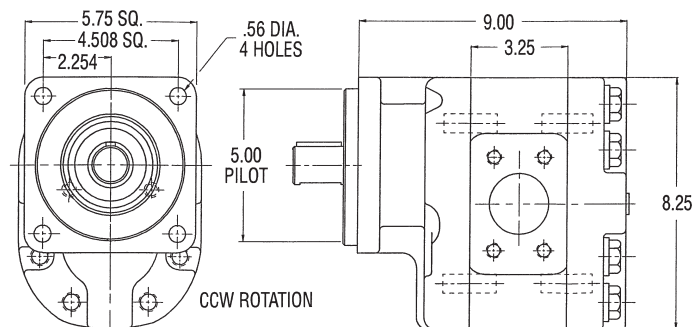
* GPM @ 1000 RPM

INTERCHANGE LIST

MODEL	COMM. INTER.	PERMCO
97023A1	P75/76-2¼ GW	P7500/7600-2 1/4 GW

Number shown is for the pump only less dry valve.

Note: No inlet port machined with undercut, no test ports, no H.O.C. bypass port.



Dimensions in Inches • Approximate Weight: 86 Lbs. (39.0 Kg)

Note: OEM Numbers Shown for Reference Only. Internal Pump Components May Vary Slightly and May Not Exactly Interchange.



MP97-04 (Rev. 11-14) Printed in the U.S.A.
© Muncie Power Products, Inc. 2014

Muncie Power Products, Inc. Member of the Interpump Hydraulics Group
General Offices and Distribution Center • P.O. Box 548 • Muncie, IN 47308-0548
(765) 284-7721 • FAX (765) 284-6991 • E-mail info@munciepower.com
Web site <http://www.munciepower.com>

Drive Products, Exclusive Agents for Canada, ISO Certified by an Accredited Registrar