



ELECTRICALLY CONTROLLED PRIORITY TYPE PROPORTIONAL FLOW DIVIDER

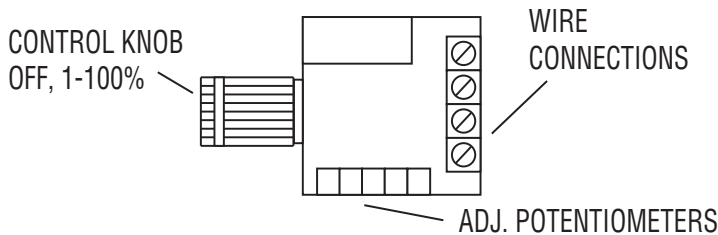
Now you can have electrical remote control of your hydraulic motors or circuits flow with our new electrical bypass style priority flow dividers. The valve is a voltage controlled direct acting proportional valve with integral pressure compensator. Regardless of load, output flow is constantly regulated to the desired amount. When off, all flow bypasses to the tank or to a secondary valve. As input voltage increases, the controlled priority flow also increases. Loss of power turns the valve off.

The controller is a self contained valve driver complete with variable output potentiometer with snap off position. Output is a pulse width modulated signal with four preset frequencies. Several field adjustable variables help to fine tune the system performance and operation characteristics. Single and dual (spreader applications) panel brackets with master on/off rocker switch provide the installer with an easy installation with additional operational features.

Kit Numbers	Description
EPFD-5	0-5 GPM (19 LPM) Valve with Single Controller
EPFD-15	0-15 GPM (57 LPM) Valve with Single Controller
EPFD-24	0-24 GPM (91 LPM) Valve with Single Controller
EPFD-15-5SP	0-15 GPM (57 LPM) & 0-5 GPM (19 LPM) Valves with Two Controllers for Spreader Applications

All kits come complete with valve, controller, mounting bracket, and wiring harness.

CONTROLLER



- COMPACT SIZE
- SIMPLE 3 WIRE DESIGN
- PWM OUTPUT
- CIRCUIT AND OVERVOLTAGE PROTECTION
- PLUG IN FUSE
- RUGGED SERVICE DESIGN

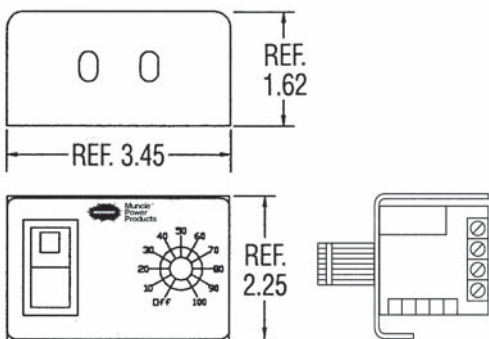
Model Number:	30T37448
Type:	Single Output PWM Driver Open Loop Voltage Controlled
Power:	10-32 VDC Regulated, Reverse Polarity Protected
Output:	2.5 Amp Typical, 5 Amp Fused
PWM Frequency:	Adjustable for 30, 50, 100, 180 Hz
Valve Trim Adj:	Minimum Threshold, Maximum Output Limit
Ramp:	0 to 5 Seconds, Adjustable
Output Indicator:	Green LED

Note: Controller is not environmentally sealed and needs to be mounted in a protected area.

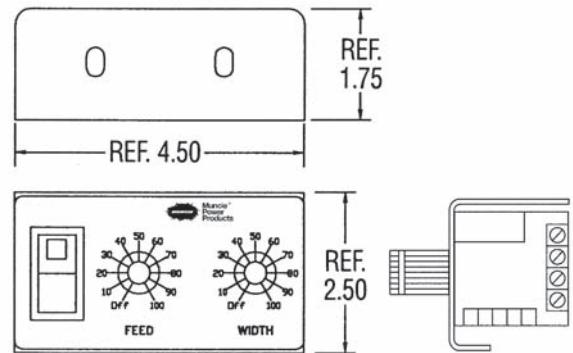
MOUNTING BRACKETS

All mounting panels have a master on/off rocker switch so the control knob can be adjusted to a preset point and activated to the set point through the rocker.

SINGLE CONTROL

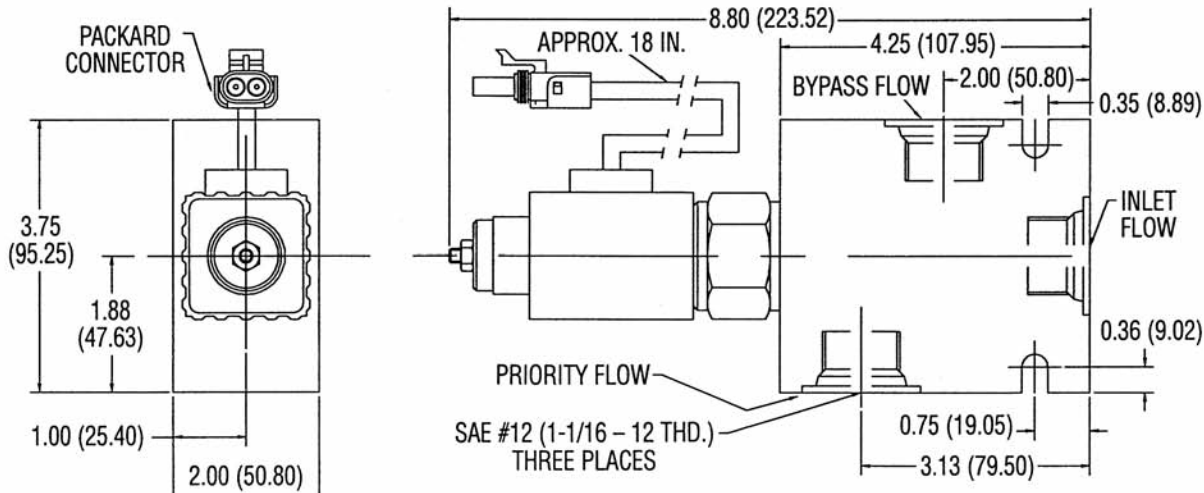


DUAL CONTROL (SPREADERS)



PROPORTIONAL VALVE SPECIFICATIONS IN INCHES (MM)

- SCREW IN CARTRIDGE
- WET ARMATURE DESIGN
- 12 VDC COIL
- ENCAPSULATED WATERPROOF COIL
- LOW HYSTERESIS-REPEATABILITY
- COMPACT SIZE
- LOW LEAKAGE RATE
- THREE FLOW RANGES
- PRESSURE COMPENSATED



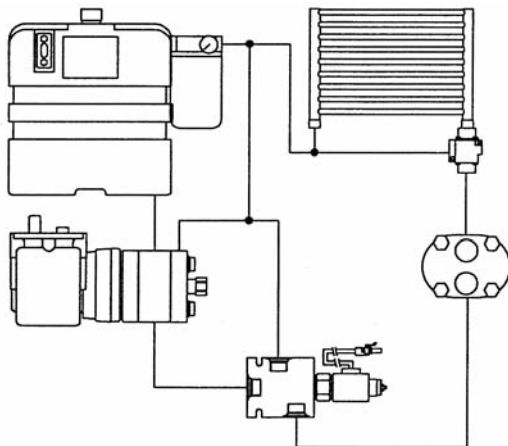
Model Number: MESP-102AVW/* (* = 5, 15, or 24)
Maximum Flow: 30 GPM (114 LPM)
Controlled Flows: 0-5 GPM (19 LPM), 0-15 GPM (57 LPM), 0-24 GPM (91 LPM)
Max. Pressure: 3000 PSI (210 BAR)
Filtration: 10 Micron
Temperature: -20°F (-29°C) to 200°F (93°C)
Seal Type: Buna N
Oper. Voltage: 12 VDC (2.5 to 9.0 VDC), 50 Hz PWM
Pressure Drop: 100 PSI (7 BAR)

Note: Two port restrictive style valve available for other types of applications, call for details.

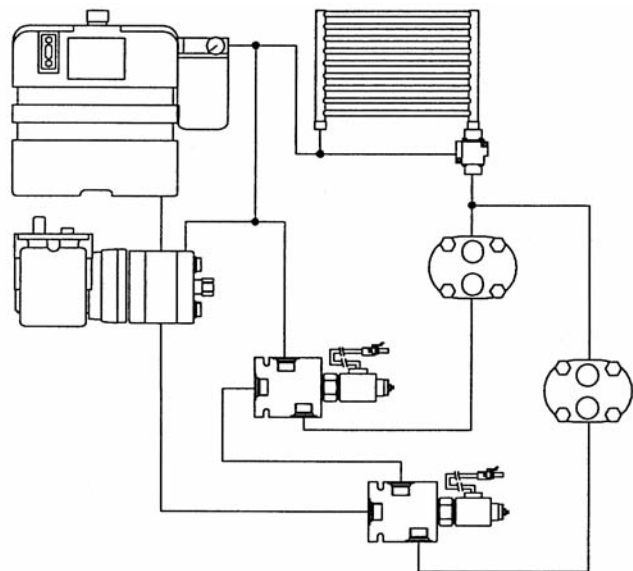
TYPICAL PLUMBING DIAGRAMS

Use for variable motor speed control or control flow to a standard cylinder circuit (not shown).

SINGLE MOTOR



DUAL MOTORS



Systems shown with L Series pump with built in relief valve and optional cooler package.



Muncie Power Products, Inc. Member of the Interpump Hydraulics Group
 General Offices and Distribution Center • P.O. Box 548 • Muncie, IN 47308-0548
 (765) 284-7721 • FAX (765) 284-6991 • E-mail info@munciepower.com
 Web site <http://www.munciepower.com>

Drive Products, Exclusive Agents for Canada, ISO Certified by an Accredited Registrar

