



CMKC01-8100-P8-AC

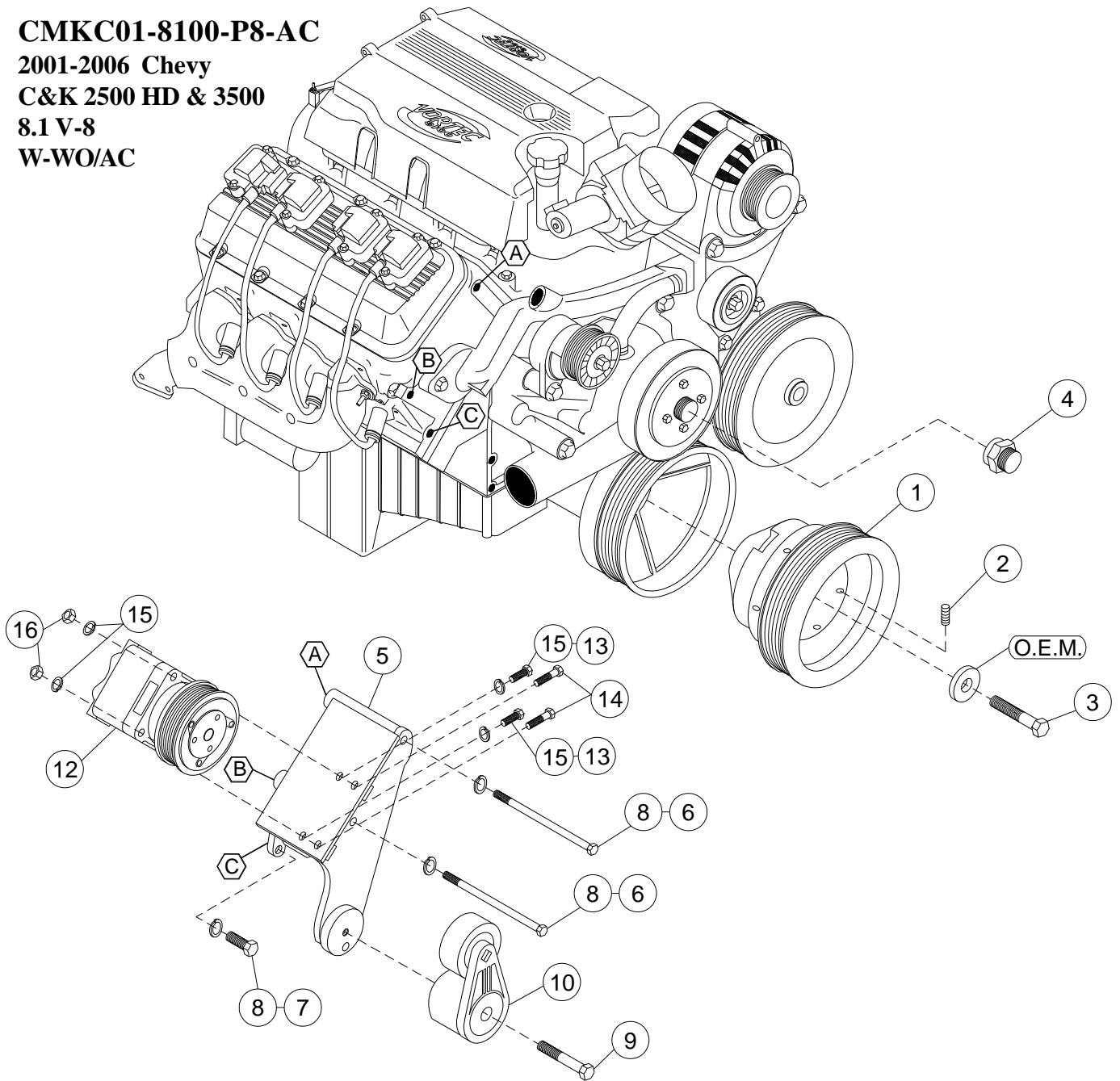
**2001-2006 CHEVY
C&K 2500HD & 3500
8.1, V-8
W-WO/AC**

INSTALLATION NOTES

1. Disconnect the negative battery cable. Remove the air intake duct. Remove the top half of the fan shroud and the fan. The fan nut has right hand threads. Remove the heater hose standoff from the front of the passenger side cylinder head and discard.
2. Remove the bolt and washer from the damper. Install the washer onto bolt (3). Using a mild grade of loctite, install the six allen head set screws (2) into the drive pulley from the inside until they are flush with the outside of the pulley. Install the drive pulley into the damper using bolt (3). Tighten bolt (3) finger tight. Making sure the drive pulley pilot is engaged into the damper, turn the pulley counter clockwise until it hits against the damper spokes. Torque bolt (3) to 210 ft./lbs.. Tighten the allen head set screws in a crossing pattern starting at 10 in lbs., 10 ft./lbs., 15 ft./lbs. and then 20 ft./lbs.
3. Install the pump onto bracket (5) using pump bolts provided in the kit. Do not tighten. Install the pump and bracket assembly onto the engine with bolts (6 & 7), and lockwashers (8) at locations "A,B & C. Tighten bolts securely.
4. Using a straight edge off the front of the drive pulley, align the clutch with the front of the drive pulley. Tighten pump bolts. There is only a slight amount of adjustment, but correct alignment is critical for proper belt tracking and belt life. Install tensioner (10) using bolt (9), tighten. Install the 8-groove belt (11).
5. Install fan spacer nut (4), fan and the top half of the fan shroud. Using a hacksaw, cut the resonator off the air intake duct as close to the main tube as possible. Using a piece of plastic from the resonator, cut out a piece just larger than the hole in the duct. Attach that piece to the air duct with RTV sealer or it's equivalent. Once the sealer is setup, wrap the duct with black pliable tape two or three layers thick. Install the duct onto the engine and check to make sure it clears the pump. Connect battery cable.

NOTE: Check all engine compartment hoses and electrical wiring that may have been disturbed or rerouted during kit intallation to be sure that hoses are not kinked, that they do not touch any high temperature items, and that they do not interfere with any linkage components.

CMKC01-8100-P8-AC
2001-2006 Chevy
C&K 2500 HD & 3500
8.1 V-8
W-WO/AC



PARTS LIST

- | | |
|-------------------------------|---------------------------------|
| 1. CPC 488A (1) | 10. Dayco 89200B-M Assembly (1) |
| 2. 3/8 x 3/4 NC Set Screw (6) | 11. Belt (Not Shown) (1) |
| 3. 16mm x 80mm 1.5 (1) | Dayco 5080570 |
| 4. FSK 37R (1) | 12. Clutch Pump Assy. (1) |
| 5. CMP 481 (1) | (Sold Separately) |
| 6. 10mm x 150mm 1.5 (2) | 13. 3/8 x 1 NC (2) |
| 7. 10mm x 30mm 1.5 (1) | 14. 3/8 x 1 1/2 NC (2) |
| 8. 10mm LW (3) | 15. 3/8 LW (4) |
| 9. 10mm x 80mm 1.5 (1) | 16. 3/8 NC (2) |