



**Muncie[®]
Power
Products**

CMKC90-3035-A-AC

1990-94 CHEVY

C & K 1500,2500,3500

1992-94 Crew Cab Chassis

305,350 W-WO/AC, A.I.R.

W-WO Dual Battery

(Serpentine)

INSTALLATION NOTES

1. Disconnect battery terminal.
IMPORTANT: Mark fan flange to water pump pulley for proper re-installation. Remove serpentine belt, fan and pulley on crankshaft.
2. Remove nut from stud on alt./PS bracket at location "A"; install and tighten spacer nut (13). Remove bolts at locations "B, C & D" on alt./PS bracket. Install bracket (10) with spacers (14) and bolts (16 & 18), leave bolts loose.
3. Install serpentine and pump drive (1) pulleys on crankshaft; with bolts and lockwashers provided. Secure pulleys.
CAUTION: Be sure bolts provided have same threads as original bolts removed.
4. Using fan spacer and studs (6 & 7) install fan and secure.
IMPORTANT: Align marks from step 1 to maintain proper fan to water pump balance. Install serpentine belt, but do not tighten belt yet.
5. Remove nuts from exhaust manifold at locations "E & F". Install bracket (11) using nuts (22) on exhaust studs. Install pump plate (12) to brackets (10 & 11) with bolts (15 & 17), leave loose. Tighten bolts and nuts at all mounting locations (A-F).
6. Install clutch pump (24) to pump plate (12) with bolts provided. Make sure clutch pulley is in line with drive pulley (1). Tighten pump bolts securely. Install pump drive belts (23) and check clearance with power steering hose.

NOTE: A power steering hose will probably need to be re-routed for clearance with drive belts (23). Very carefully bend tubing as necessary to gain clearance. By loosening connection at PS pump and rotating tubing, additional clearance may be obtained, re-tighten connection.
7. Adjust pump plate (12) for proper belt tension. Tighten bolts (15 & 17). Tension serpentine belt and connect battery terminal.
8. **CAUTION:** Check all engine compartment vacuum and power steering hoses that may have been disturbed or re-routed during kit installation to be sure hoses are not kinked, that they do not touch any high temperature item, and that they do not interfere with any linkage components.

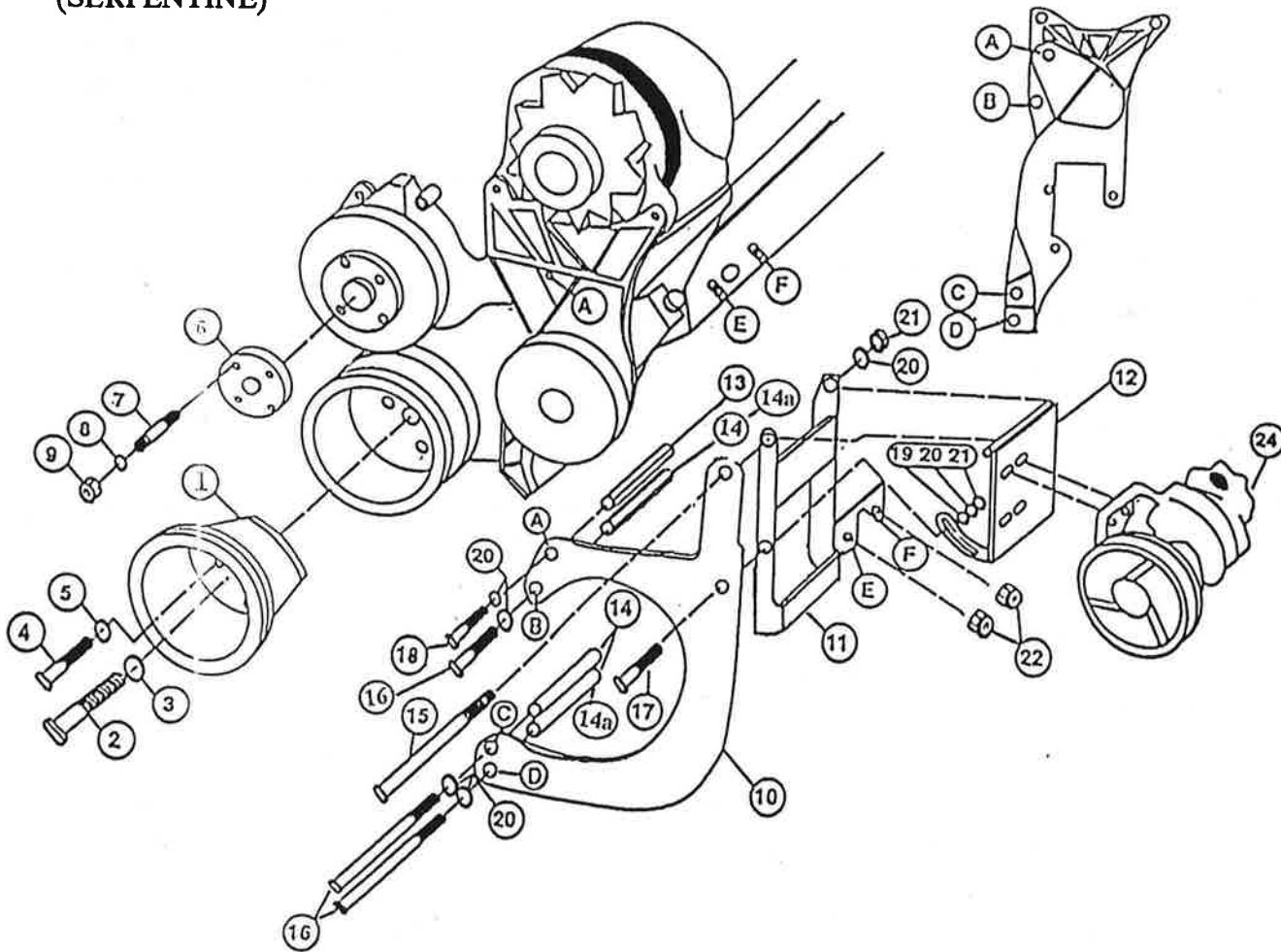
NOTE: This kit is designed to operate successfully with the standard fan supplied by the manufacturer of your truck. Due to O.E.M. assembly tolerances and change, visually make certain that there is adequate clearance between fan and drive pulley. It may be necessary to use a longer fan spacer for clearance.

CMKC90-3035-A-AC

1990-94 CHEVY 305,350 W-WO/AC, A.I.R.

W-WO Dual Battery

(SERPENTINE)



PARTS LIST

- | | |
|-----------------------------|-------------------------------|
| 1. CPC 352 (1) | 14. SP88-5.325 (3) |
| 2. 7/16 X 3-1/2 NF GR.8 (1) | 14a. SP88-5.825 (2) |
| 3. 7/16 LW (1) | 15. 3/8 X 7-1/2 NC (1) |
| 4. 3/8 X 2 NF GR. 8 (3) | 16. 3/8 X 6-3/4 NC GR.8 (3) |
| 5. 3/8 LW (3) | 17. 3/8 X 1-3/4 (1) |
| 6. FSO 505 (1) | 18. 3/8 X 1-1/4 (2) |
| 7. 8mm X 45mm ST (4) | 19. 3/8 FW (1) |
| 8. 8mm LW (4) | 20. 3/8 LW (6) |
| 9. 8mm 1.25 (4) | 21. 3/8 NC (2) |
| 10. CMB 350 (1) | 22. 3/8 SLN Self Lock Nut (2) |
| 11. CMB 351 (1) | 23. AX-61 (Not Shown) |
| 12. CMP 351 (1) | 24. Clutch Pump Assembly (1) |
| 13. SP38-5.325 (2) | (Sold Separately) |

NOTE: Location "B" may have stud, use spacer nut (13) and bolt (18).

NOTE: 94 Models, use spacer (14a) location "B & D".