



Muncie<sup>®</sup>  
Power  
Products

CMKC90-3642-A  
CMKC90-3642-AH  
1990-98 CHEVY  
366,427 WO/AC

## INSTALLATION NOTES

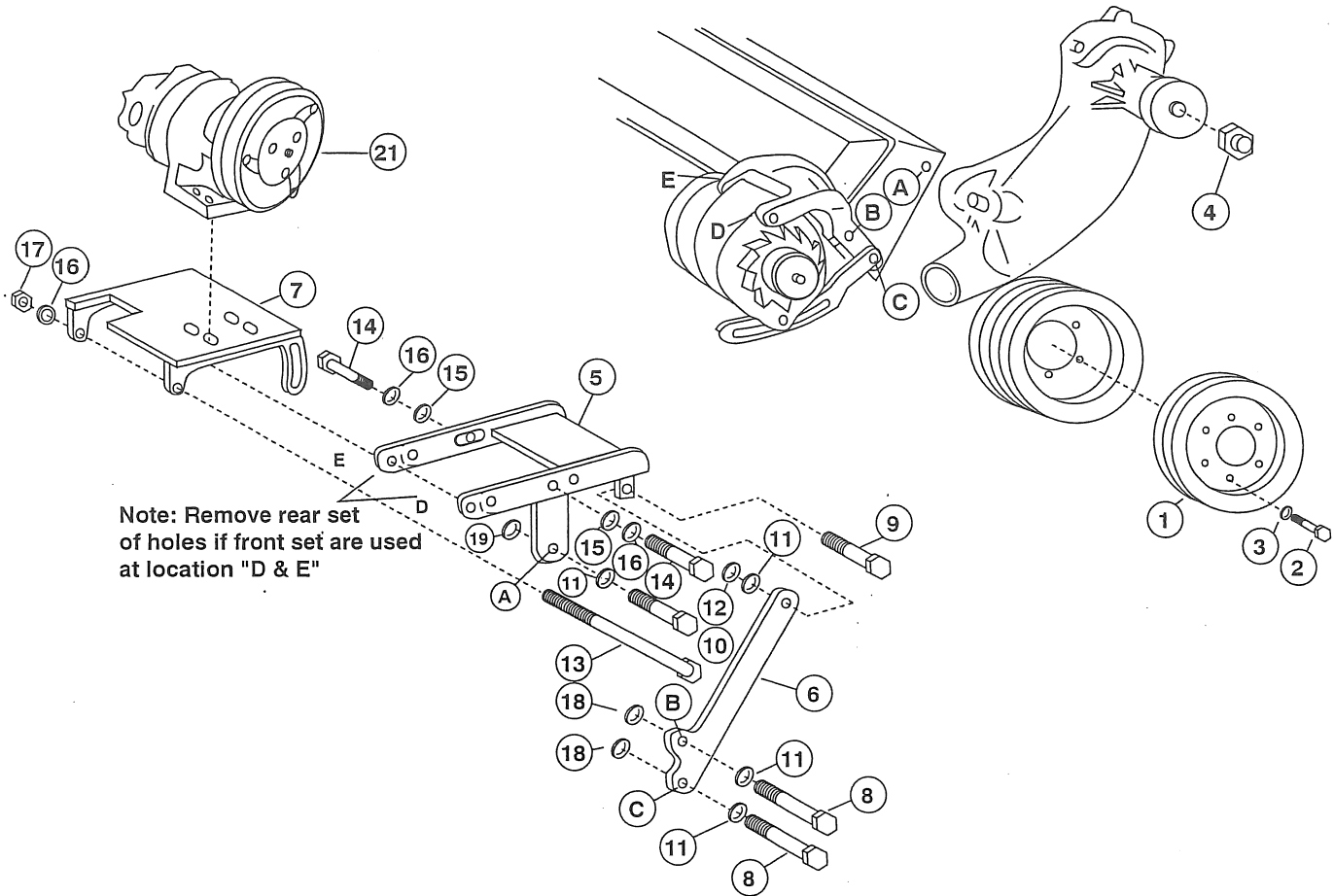
---

1. Disconnect positive battery terminal. Remove fan, threads are left hand. Loosen engine belts, do not remove.
2. Remove six bolt from crankshaft pulley and install triple groove drive pulley (1) and bolts (2), tighten bolts. Discard single O.E.M. pulley near radiator if equipped, most trucks do not have this pulley. Leave v-groove pulley near damper. Part of fan shroud will need to be removed for pulley clearance.  
**CAUTION:** Be sure new bolts have the same threads and are 1/2" longer than O.E. M. bolts removed.
3. Remove O.E.M. bolt at location "C" and install bracket (6) with bolt (8) and spacer (18), leave loose. Remove O.E.M. bolt at location "B" and secure bracket (6) with bolt and spacer.
4. Remove alternator hinge bolt and install bracket (5) as shown with bolts and spacer. Remove rear set of holes if front set are used at location "D & E". Install pump plate (7) around bracket (5). Secure bracket bolts at all locations. Leave alternator hinge bolt loose.
5. Install clutch pump to pump plate using pump bolts provided. Align clutch pump pulley to drive pulley (1), tighten pump bolts.
6. Tighten O.E.M. belts. Install and tension clutch pump belts (20). Secure pump plate bolts.
7. Install and tighten fan spacer nut (4) and fan. **NOTE:** Threads are left hand.  
**IMPORTANT:** Make sure both spacer nut and fan nut are secure. Most of lower shroud will need to be removed for fan clearance.

**IMPORTANT:** Fan to radiator clearance should not be a problem. It is your responsibility to make sure adequate clearance exists.

**CAUTION:** Check all engine compartment vacuum hoses and electrical wiring that might have been disturbed or re-routed during kit installation to be sure that hoses are not kinked, that they do not touch any high temperature items, and that they do not interfere with any linkage components.

**CMKC90-3642-A**  
**CMKC90-3642-AH**  
 1990-98 CHEVY  
 366,427 WO/AC



### PARTS LIST

- |                              |  |
|------------------------------|--|
| 1. CPC 522 (1)               | 11. 7/16 LW (4)                        |
| 2. 5/16 X 1-1/4 NC GR. 8 (6) | 12. 7/16 NC (1)                        |
| 3. 5/16 LW (6)               | 13. 3/8 X 6 NC (1)                     |
| 4. FSK 52 (1)                | 14. 3/8 X 1-1/2 NC (2)                 |
| 5. CMB 520 (1)               | 15. 3/8 FW (2)                         |
| 6. CMB 521 (1)               | 16. 3/8 LW (3)                         |
| 7. CMP 521 (1)               | 17. 3/8 NC (1)                         |
| 8. 7/16 X 4 NC (2)           | 18. SP88-0.500 (2)                     |
| 9. 7/16 X 1-1/2 NC (1)       | 19. SP88-0.187 (1)                     |
| 10. 7/16 X 1 NC (1)          | 20. AX-65 (2), H.D.: AX-67 (Not Shown) |
|                              | 21. Clutch Pump Assembly (1)           |
|                              | (Sold Separately)                      |