



**Muncie®
Power
Products**

CMKC96-5057-YP6-AC

1996-2000 CHEVY TRUCK

1997-2002 CHEVY G-VAN

C&K 1500,2500,3500

305, 350 W/AC

W-WO Dual Battery

(Serpentine)

INSTALLATION NOTES

1. Disconnect negative battery terminal. Remove the air cleaner assembly and the top half of the fan shroud. Remove the fan and the serpentine belt. Fan nut has right hand threads.
2. Remove the alternator, tensioner, idler and hose standoff from the OEM alternator bracket. Remove the bracket and stud bolt from the engine, and the steel bushings from the OEM alternator bracket.
3. Install the OEM steel bushings into the new bracket (1) the same way they were in the OEM bracket. Install bracket (1) onto the engine with bolts (8) at locations "A & B" and bolt (9) with lockwasher (4) at location "C". Tighten bolts securely. Install the OEM idler and the alternator onto the new bracket with OEM bolts. Install the tensioner (11) onto the bracket with bolt (10).
4. Install pump (23) into plate (2) using bolts (6), flatwashers (5), lockwashers (4) and nuts (7), tighten bolts securely. Install coil adapter (16) onto plate (2) with bolts (17). Install the coil and clutch onto the pump assembly as per manufacturer's instructions. Install the pump assembly onto bracket (1) using bolts (3), lockwashers (4), flatwashers (5). Align the clutch pulley with the OEM pulleys, then tighten pump plate bolts securely.
5. Install idler (14) onto the main bracket into the lowest tapped hole with bolt (12), lockwasher (13), and bushing (15). Install the new belt onto the engine and route it according to the diagram. If the belt is too short, move the idler up one hole until it can be installed.
6. Install the fan, the fan shroud and the air cleaner assembly. Connect the battery cable. Run the engine to make sure the belt tracks properly and in seat in all the pulley correctly.

CMKC96-5057-YP6-AC

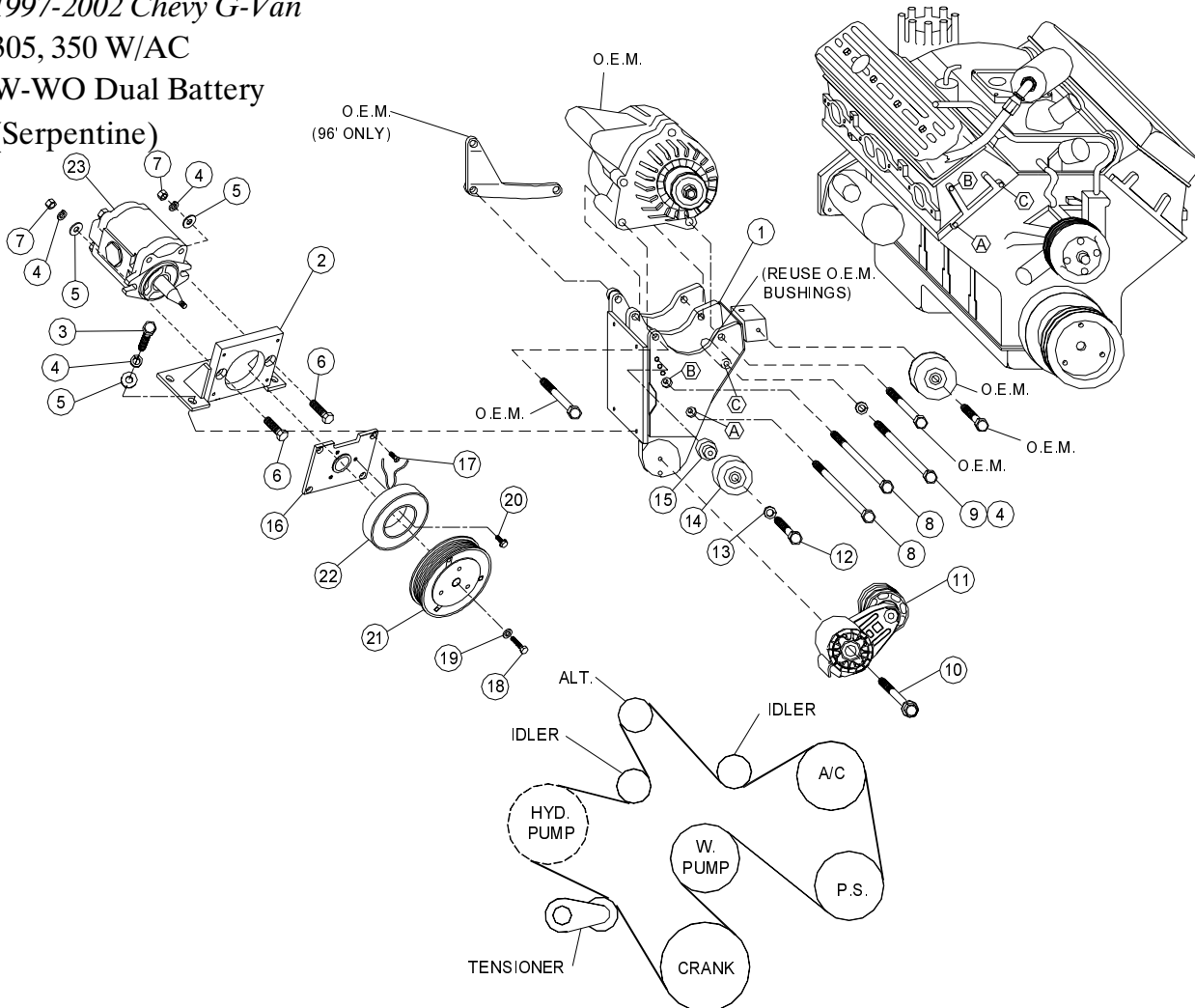
1996-2000 Chevy Truck

1997-2002 Chevy G-Van

305, 350 W/AC

W-WO Dual Battery

(Serpentine)



PARTS LIST

- | | | | |
|-----|----------------------|-----|---------------------------|
| 1. | CMB 37I (1) | 15. | CMB 372 Bushing |
| 2. | CMP 37AI (1) | 16. | MCA01 |
| 3. | 3/8 X 1 (4) | 17. | 1/4 X 3/4 FHSCS (4) |
| 4. | 3/8 LW (7) | 18. | Capscrew- 19T38756 (1) |
| 5. | 3/8 FW (6) | | T= 20 ft/lbs |
| 6. | 3/8 X 1-1/2 (2) | 19. | Flat Washer- 21MZ3487 (1) |
| 7. | 3/8 NUT (2) | 20. | Capscrew- 19T34530 (3) |
| 8. | 3/8 X 5-3/4 GR 8 (2) | | T=8-10 ft/lbs |
| 9. | 3/8 X 6 GR 8 (1) | 21. | Clutch (Sold Separately) |
| 10. | 10mm X 80 (1) | 22. | Coil (Sold Separately) |
| 11. | Dayco 89200B | 23. | Pump (Sold Separately) |
| 12. | 12mm x 45mm (1) | 24. | 5061150 Dayco (1) |
| 13. | 12mm LW (1) | | |
| 14. | TICPS (1) | | |