



**Muncie®
Power
Products**

CMKD11-6700-XP8-AC

2011 Dodge 2500-5500

2012-Current Dodge 2500-5500 w/manual transmission

6.7 Cummins Diesel

W-AC

INSTALLATION NOTES

1. Drain radiator below upper radiator hose. Remove hose. Remove driver side upper shroud support. Remove belt. Remove return hose from power steering reservoir and let reservoir drain. Remove bolts from power steering pump through the holes in the pulley. Leaving pressure lines attached, set pump aside on passenger side of engine. Remove power steering pump brackets.
2. Install studs (2) in timing cover w/nuts (3). Install pump onto adapter plate (12) using bolts (13,14). Install pump and adapter plate (12) onto bracket (1) using bolts (19), lockwashers (15) and flatwashers (17). When installing pump and adapter plate to main bracket, line the back of the plates flush with each other. This will give a good start to aligning the clutch with the O.E.M. drive. Install 5/8 hose (19) onto return hose using hose barb (21) and hose clamps (20). Power steering lines on steering gearbox may need moved for proper clearance to the pump.
3. Install pump and bracket assembly onto studs (2) using nuts (3). Check alignment on pump and adjust if necessary. NOTE: It may be easier to install hoses and power wire before power steering pump is reinstalled. Install power steering pump onto bracket using bolts (5) and LW's (4). Install new belt (24) according to the belt diagram. Install idler (9) in lowest hole location possible while tensioner is retracted fully using bolt (11), FW (10), and bushing (8).
4. Install hose rest (6) onto cylinder head on driver side using flange head bolts (7). Cut 3/4" off radiator side of top radiator hose and reinstall. Connect new power steering return hose (19) to power steering reservoir using OEM hose clamp. Fill reservoir w/ATF Plus 4 transmission fluid. Fill radiator and overflow tank. Check for proper belt tracking and clearances.

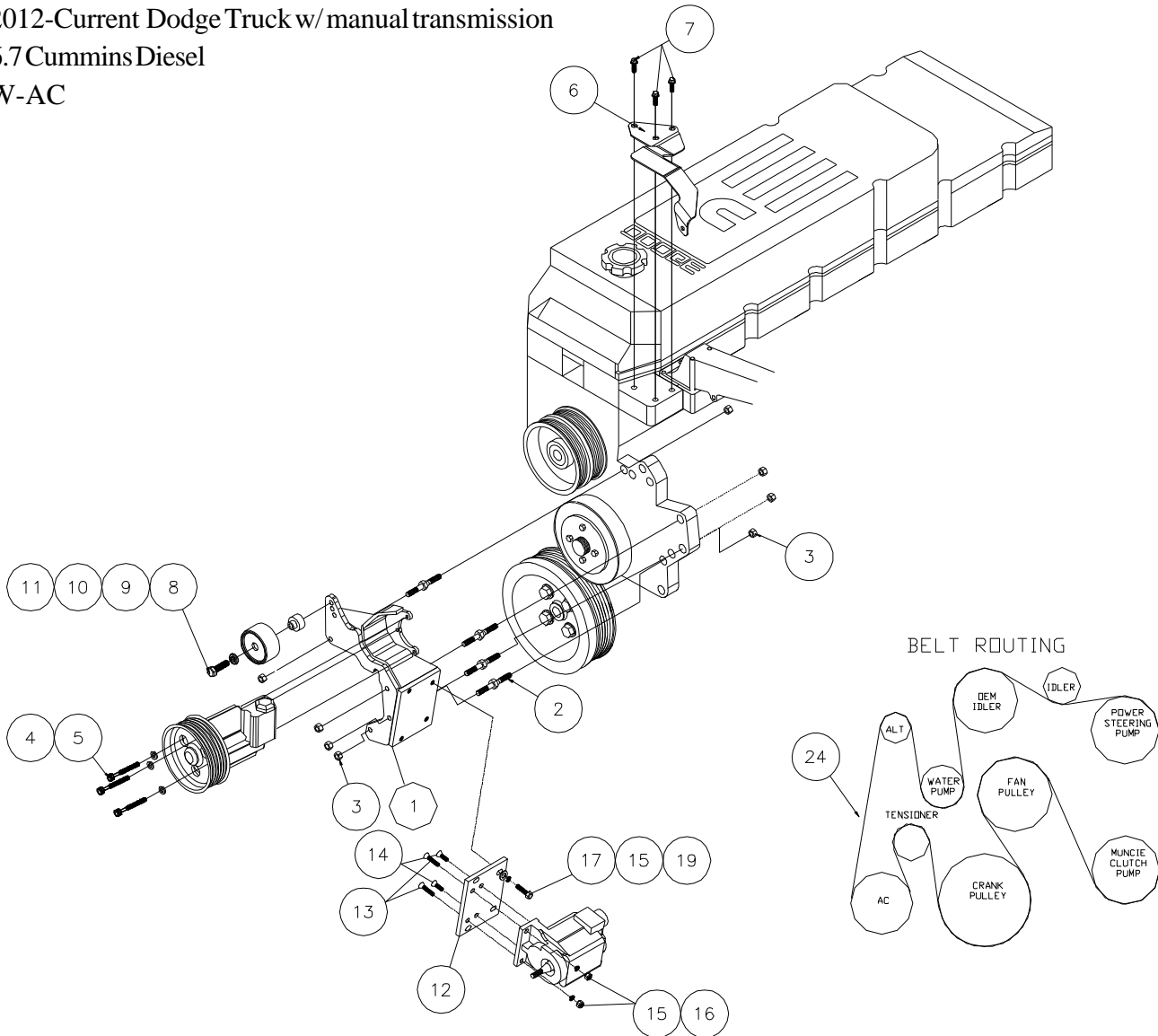
CMKD11-6700-XP8-AC

2011 Dodge Truck 2500-5500

2012-Current Dodge Truck w/ manual transmission

6.7 Cummins Diesel

W-AC



PARTS LIST

- | | |
|------------------------------|-------------------------------------|
| 1. DMP582-I8 (1) | 14. 3/8 X 1 1/4 FHSCS (2) |
| 2. 8mm Stud 080751.25 ST (4) | 15. 3/8 LW (6) |
| 3. 8mm Flange Nut (8) | 16. 3/8 NC (2) |
| 4. 8mm LW (3) | 17. 5/16 FW (4) |
| 5. 8mm x 80mm (3) | 18. 3/8 X 1 (4) |
| 6. DMB563 (1) | ITEMS 19-23 NOT SHOWN |
| 7. 10mm x 20mm Flange (3) | 19. 14" of 5/8" Oil Hose (1) |
| 8. DMB562 (1) | 20. #10 Hose Clamp Dayco (2) |
| 9. 89016 Dayco (1) | 21. 5/8" Double Ended Hose Barb (1) |
| 10. 3/8 FW (1) | 22. 3/8 LW (2) |
| 11. 10mm x 45mm (1) | 23. 15" Plastic Tie Strap (1) |
| 12. DMP571 (1) | 24. 5081325 Dayco (1) |
| 13. 3/8 X 1 3/4 FHSCS (2) | |