



**Muncie®
Power
Products**

CMKD19-6700-YP8-AC

2019-2024 RAM 2500-5500
6.7L I6 Cummins Diesel w/ AC, w/o Dual Alternators
w/ Remote-Mounted Power Steering Reservoir

Requires 8-Groove Clutch, SAE Two-Bolt "A" Flange Pump
Recommended 1.75 in.³ or 8 gal. Pump w/ 12hp Restriction

NOTE: Rear Ported Pump Would Be Best

NOTE: Will NOT Work w/ 6" Clutch

NOTE: Will Not Work on Truck Equipped w/ Lane Departure

INSTALLATION NOTES

1. The buyer is responsible for providing trained and experienced installation decision making with technical know-how to apply professional judgment that specifically applies to each individual installation.
2. Be sure to read and understand all available information including but not limited to instructions, warnings, sale terms, and warranties for the vehicle and all system components prior to attempting installation.
3. Disconnect the negative battery cables. Remove the top half of the fan shroud. Remove the four nuts holding the fan ring to the engine. Unplug the fan wire. Using the appropriate tool loosen the fan nut (Fan nut has right hand threads). Then remove the fan and fan ring from the engine compartment. Remove the engine belt.
4. Remove the P/S pump, then remove the upper driver side fan ring brace from the engine. The brace will not be reused.
5. Install the pump and clutch onto the pump bracket (1). Using three 8mm x 50mm flange bolts (4) and one 8mm x 25mm flange bolt (8) with nuts (5) install the bracket and pump assembly onto the engine. Do not tighten completely. Install brace (2) onto the engine with two 10mm x 20mm flange bolts (6) and onto the bracket with two 8mm x 20mm flange bolts (7). Tighten all bolts very lightly, then tighten bracket bolts and brace bolts securely.
6. Install idler (10) onto bracket (1) using bolt (12), flat washer (11), and spacer (9), installing it into the lowest hole. Install belt (24) according to belt diagram. If the belt is too short move idler (10) up a hole until the belt can be installed. Replace the fan and fan shroud with OEM hardware. Install the fan shroud brace (3) onto the bracket with bolt (7) and to the fan ring using bolt (8) and the OEM nuts. Replace the top half of the fan shroud with OEM hardware
7. If there is not adequate clearance between the pump bracket and P/S hose, install bracket (22) with bolt (23) as shown in the photo. Reconnect the battery cables. Start the vehicle and check for proper belt tracking.

NOTE: Make certain any hoses, wires or components that were relocated during the installation are securely fastened and do not come in contact with any hot or moving parts.



Muncie® Power Products

CMKD19-6700-YP8-AC

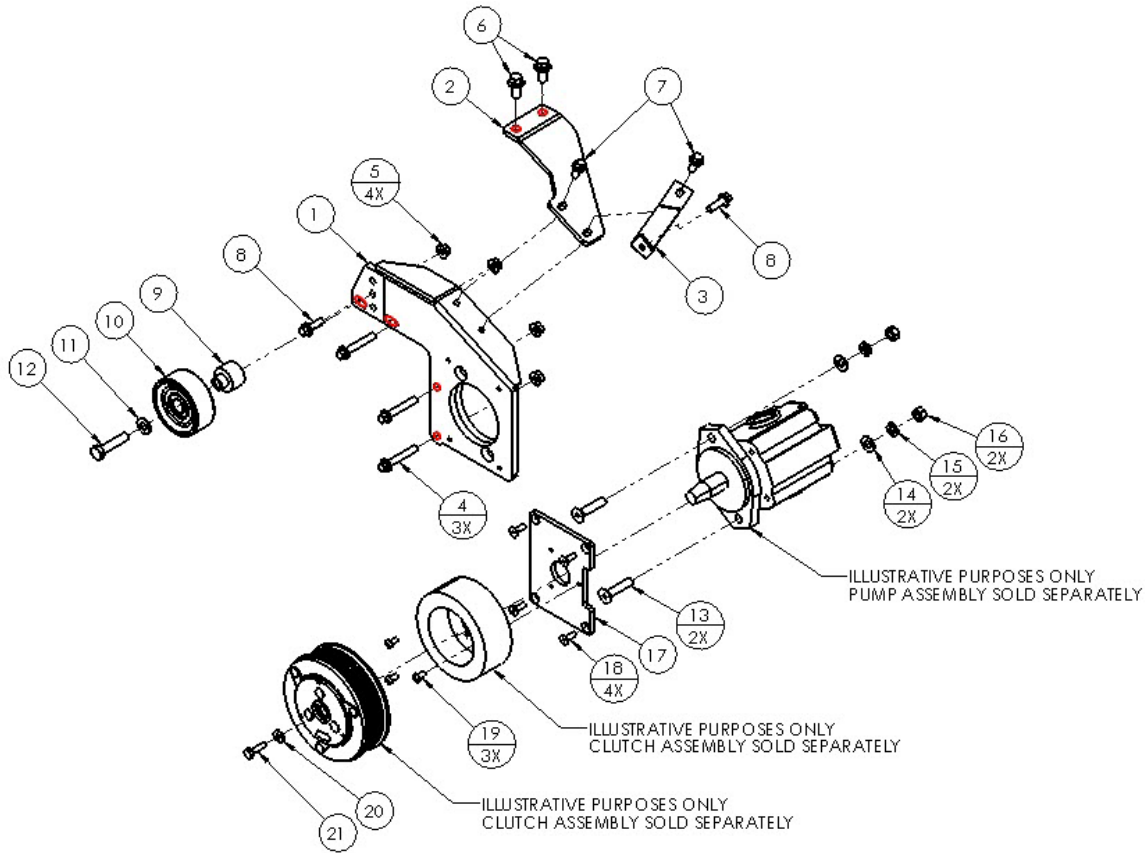
2019-2024 RAM 2500-5500
6.7L I6 Cummins Diesel w/ AC, w/o Dual Alternators
w/ Remote-Mounted Power Steering Reservoir

Requires 8-Groove Clutch, SAE Two-Bolt "A" Flange Pump
Recommended 1.75 in.³ or 8 gal. Pump w/ 12hp Restriction

NOTE: Rear Ported Pump Would Be Best

NOTE: Will NOT Work w/ 6" Clutch

NOTE: Will Not Work on Truck Equipped w/ Lane Departure



PARTS LIST					
Item	Description	Qty.	Item	Description	Qty.
Main Bracket			Pump Mounting Hardware		
1	RMP60A	1	13	3/8" x 1 1/4" NC FHSCS	2
Support Braces			14	5/16" Flat Washer	2
2	DMB591	1	15	3/8" Lock Washer	2
3	DMB592	1	16	3/8" Nut	2
Mounting Hardware			17	MCA01 Coil Adapter Plate	1
4	8mm x 50mm Flange Bolt	3	18	1/4" x 3/4" NC FHSCS	4
5	8mm Flange Nut	4	19	Capscrew-19T34530 (T=8-10 ft/lbs) (Comes w/ Clutch)	3
6	10mm x 20mm Flange Bolt	2	20	Flat Washer-21MZ3487 (Comes w/ Clutch)	1
7	8mm x 20mm Flange Bolt	2	21	Capscrew-19T38756 (T=20 ft/lbs) (Comes w/ Clutch)	1
8	8mm x 25mm Flange Bolt	2	Power Steering Hose Adapter Bracket		
Idler Assembly			22	RMB601	1
9	DMB594	1	23	6mm x 30mm Flange Bolt	1
10	89048 Idler	1	Belt		
11	3/8" Flat Washer	1	24	5081305	1
12	10mm x 45mm Bolt	1			



Muncie® Power Products

CMKD19-6700-YP8-AC

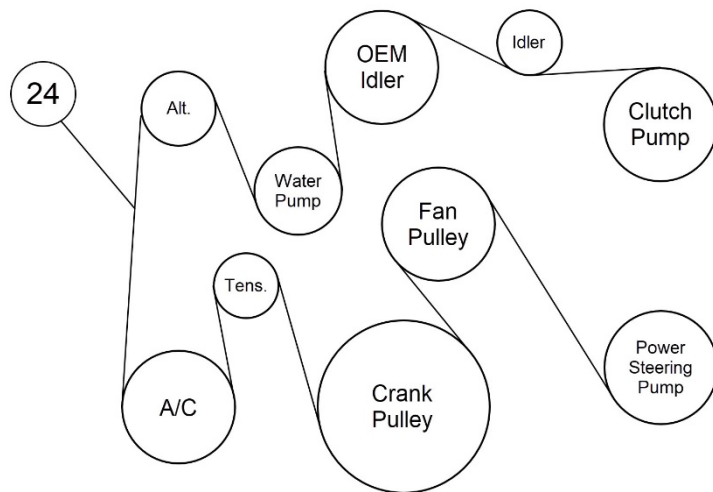
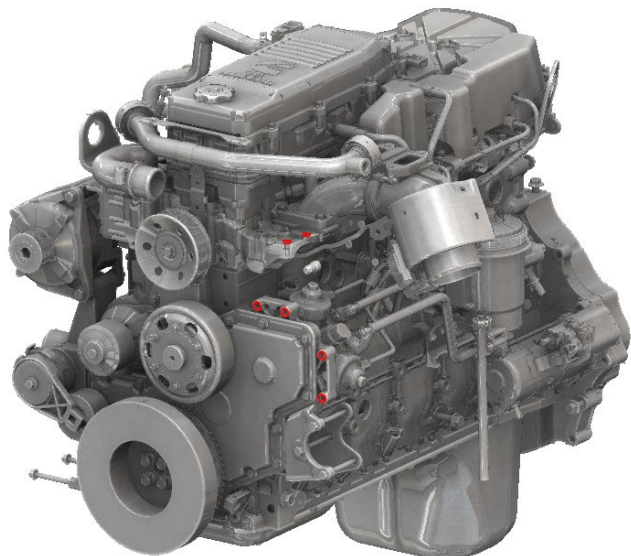
2019-2024 RAM 2500-5500
6.7L I6 Cummins Diesel w/ AC, w/o Dual Alternators
w/ Remote-Mounted Power Steering Reservoir

Requires 8-Groove Clutch, SAE Two-Bolt "A" Flange Pump
Recommended 1.75 in.³ or 8 gal. Pump w/ 12hp Restriction

NOTE: Rear Ported Pump Would Be Best

NOTE: Will NOT Work w/ 6" Clutch

NOTE: Will Not Work on Truck Equipped w/ Lane Departure



Engine Mounting Location

Belt Routing



Power Steering Hose Adapter Bracket Image

Disclaimer: (1.) Due to the custom nature and variation of all add-on systems of this type, no complete system kits are offered by the manufacturer, and any group of parts marketed as a kit is limited to only the individually defined parts in that specific kit. The system designer's rotating accessory components are not included, offered, or fully known by the manufacturer. In addition to the absence of the rotating accessory system, other potential components such as additional clamps, brackets, wear liners, hardware, or other items that may be required by the system designer must be identified and supplied by the actual system designer. (2.) Due to vehicle manufacturer's assembly tolerances, production changes, and installation variances, it is the buyer's responsibility to ensure adequate clearance for all components including space for and safe location of the fan, radiator, all lines, and wires. Check for possible movement, vibration, friction points, heat exposure and/or shifting of any and all components such as hoses, wires, and all other components including those that may otherwise be considered non-moving and/or unaffected by the installation (3.) The buyer is responsible for the entire installation of a mounting kit as the mounting kit as the mounting kit is part of a custom process controlled by the buyer through their whole system design and directed installer as the installer evaluates, locates, routes, aligns, and tightens all components while determining if additional clamps, brackets, wear-liners, or other components may be required, beyond those included in the kit. Any additional items required, beyond those included in the kit, are to be provided at the expense of the buyer. (4.) The buyer is responsible for the development and communication of their whole system installation procedures, safety precautions, application, and use of the engine accessory mounting kit in their system, including efforts to maintain vehicle control and prevent pinch, wear, impact, and/or burn exposure on all hoses, wires, and other parts. (5.) The buyer is responsible for providing trained and experienced installation decision making with technical know-how to apply professional judgment that specifically applies to each individual installation. The buyers chosen installers must be qualified and experienced technicians that are familiar with the vehicle and accessory being mounted as well as the buyer's whole system design and installation procedures associated with the kit. (6.) The buyer is responsible for determining and achieving compliance to all regulatory issues that apply to the use of all products. (7.) The manufacturer reserves the right to make changes and/or improvements to any product at any time with or without notice.