



**Muncie®
Power
Products**

CMKD25-6700-YP8-AC

2025-2026 RAM 2500-5500
6.7L I6 Cummins Diesel w/ A/C, w/o OEM Dual Alternators

For use w/ Muncie SAE Two-Bolt 'A' Flange Pump
Must use Muncie 8-Groove, 5-1/2" Diameter Clutch
Recommend 1.75in³ or 8gal Pump w/ 12hp Restriction or Smaller
Approximately 145% Overdriven w/ 5-1/2" Diameter Clutch
NOTE: Must Use Side-Ported Pump

INSTALLATION NOTES

1. The buyer is responsible for providing trained and experienced installation decision making with technical know-how to apply professional judgment that specifically applies to each individual installation.
2. Be sure to read and understand all available information including but not limited to instructions, warnings, sale terms, and warranties for the vehicle and all system components prior to attempting installation.
3. Disconnect the negative battery cables. Remove the plastic cover over the radiator. For easier access, drain coolant and remove the upper radiator hose.
4. Remove the driver's side fan shroud brace. Remove the OEM serpentine belt. The OEM fan shroud brace and serpentine belt will not be reused.
5. If the vehicle is equipped with OEM dual alternators, first, reprogram the ECM for a single alternator setup. Then, remove the secondary alternator and secondary alternator bracket. They will not be reused.
6. Install the hydraulic pump and clutch assemblies according to the manufacturers' specifications onto the main bracket (1) with mounting hardware (14-19). Install the main bracket (1) and clutch pump assembly onto the engine at mounting location [A] with mounting hardware (2-4). Install the main bracket support brace (5) onto the main bracket (1) and the engine at mounting location [B] with mounting hardware (6-7). Make sure to secure the wire harness away from any hot or moving parts.
7. Install the smooth idler pulley assembly (10-13) onto the main bracket (1).
8. Install belt (20) according to the belt diagram.
9. Install fan shroud support brace (8-9) according to the reference photo below.
10. Reinstall the upper radiator hose. Reinstall the plastic cover over the radiator and fan shroud support brace (8). Properly refill the coolant. Reconnect the battery cables.

CAUTION: Before starting the engine, check to make certain no wires, hoses, etc. that may have been disturbed during installation do not come in contact with any hot or moving parts. Properly refill any fluids that may have been drained, check for leaks. Run the engine and check for proper belt tracking and clearance of any hoses, wires, etc. It is the installer's responsibility to correct/adjust any components, if necessary, before the vehicle is put into service.



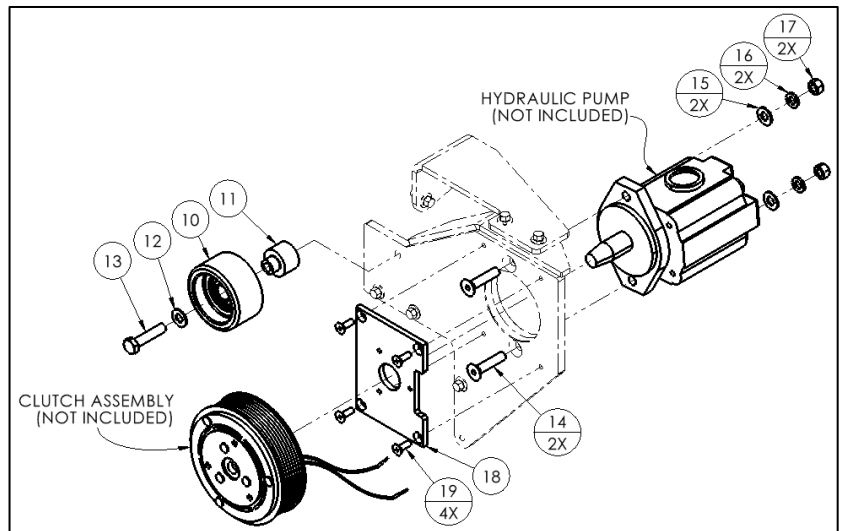
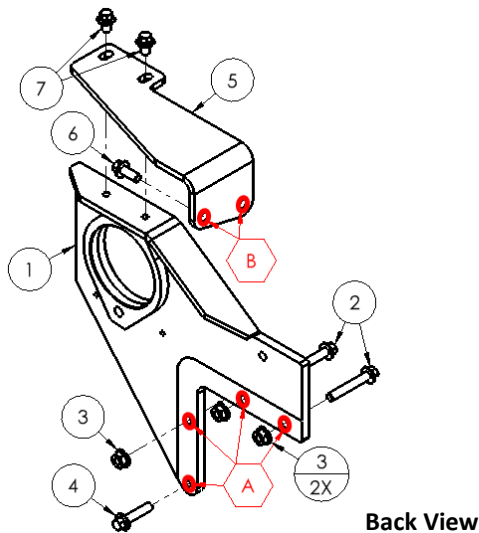
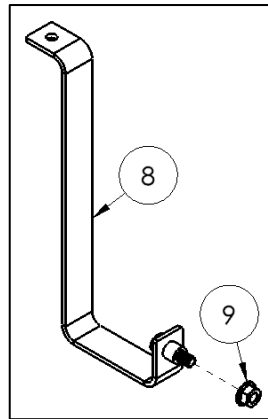
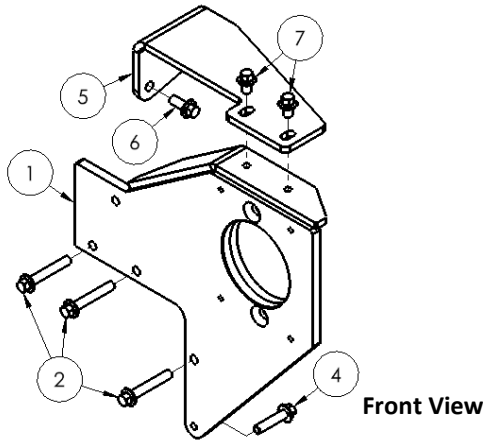
**Muncie®
Power
Products**

CMKD25-6700-YP8-AC

2025-2026 RAM 2500-5500
6.7L I6 Cummins Diesel w/ A/C, w/o OEM Dual Alternators

For use w/ Muncie SAE Two-Bolt 'A' Flange Pump
Must use Muncie 8-Groove, 5-1/2" Diameter Clutch
Recommend 1.75in³ or 8gal Pump w/ 12hp Restriction or Smaller
Approximately 145% Overdriven w/ 5-1/2" Diameter Clutch
NOTE: Must Use Side-Ported Pump

Parts List



PARTS LIST

Item	Part Number	Description	Qty.	Item	Part Number	Description	Qty.
Main Bracket				Smooth Idler Pulley Assembly			
1	RMP62A-I8	Main Bracket	1	10	89016	Dayco Smooth Idler Pulley	1
Main Bracket Mounting Hardware				11	DMB594	Machined Idler Bushing	1
2	1013316	M8-1.25 x 50mm 10.9Gr Hex Flg. Bolt	3	12	1002596	3/8" Flat Washer	1
3	1013333	M8-1.25 10.9Gr Hex Flg. Nut	3	13	1006633	M10-1.5 x 45mm 10.9Gr Hex Bolt	1
4	1018224	M8-1.25 x 35mm 10.9Gr Hex Flg. Bolt	1	Clutch Pump Mounting Hardware			
Main Bracket Support Brace				14	1003930	3/8"-16 x 1-3/4" NC Gr5 FHSCS	2
5	RMB621	Main Bracket Support Brace	1	15	1002596	3/8" Flat Washer	2
Main Bracket Support Brace Mounting Hardware				16	1010315	3/8" Lock Washer	2
6	1013329	M8-1.25 x 20mm 10.9Gr Hex Flg. Bolt	2	17	1010314	3/8"-16 Gr5 Hex Nut	2
7	1011623	M8-1.25 x 12mm 10.9Gr Hex Flg. Bolt	2	18	MCA01	Muncie Coil Adaptor Plate	1
Fan Shroud Support Brace				19	1007577	1/4"-20 x 3/4" NC Gr5 FHSCS	4
8	RMB623	Fan Shroud Support Brace	1				
9	1013333	M8-1.25 10.9Gr Hex Flg. Nut	1				



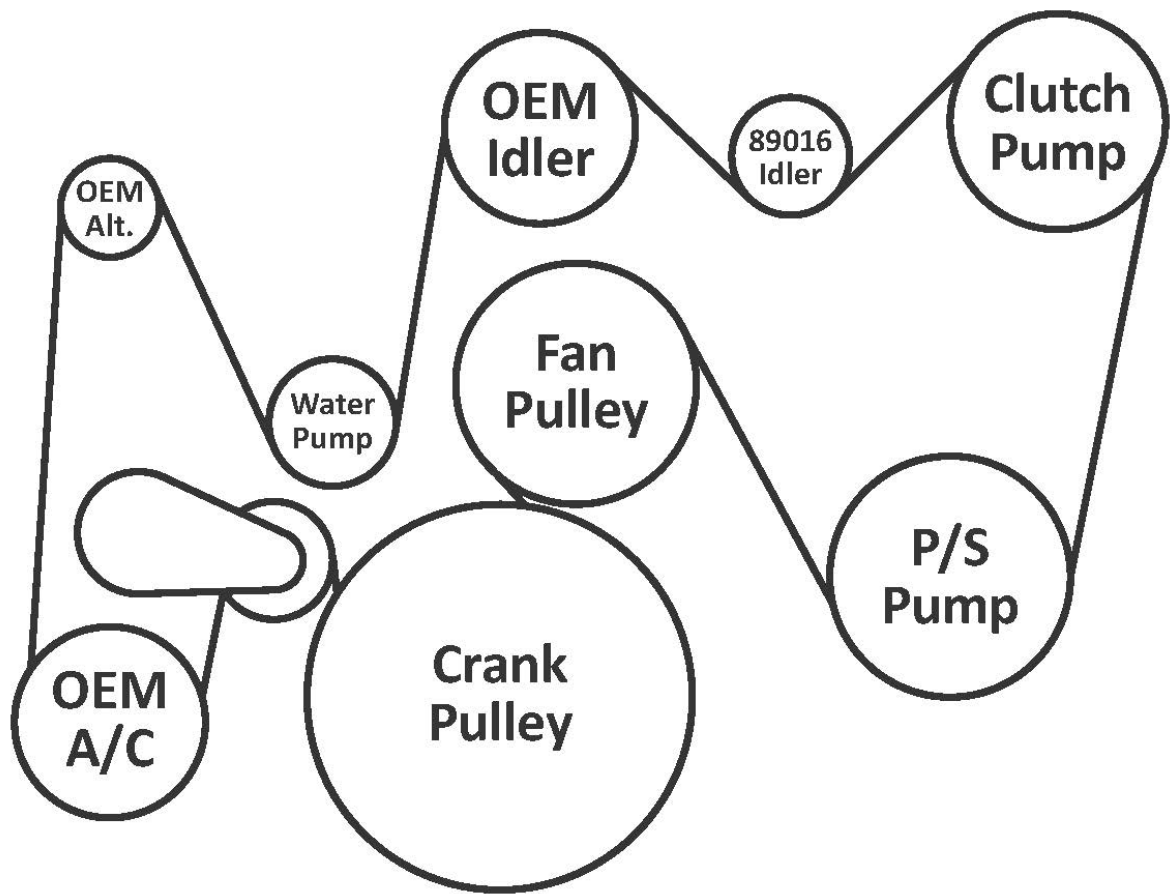
Muncie®
Power
Products

CMKD25-6700-YP8-AC

2025-2026 RAM 2500-5500
6.7L I6 Cummins Diesel w/ A/C, w/o OEM Dual Alternators

For use w/ Muncie SAE Two-Bolt 'A' Flange Pump
Must use Muncie 8-Groove, 5-1/2" Diameter Clutch
Recommend 1.75in³ or 8gal Pump w/ 12hp Restriction or Smaller
Approximately 145% Overdriven w/ 5-1/2" Diameter Clutch
NOTE: Must Use Side-Ported Pump

Belt Routing



PARTS LIST			
Item	Part Number	Description	Qty.
Belt			
20	5081373	Dayco 8-Groove, 137.3" Belt	1

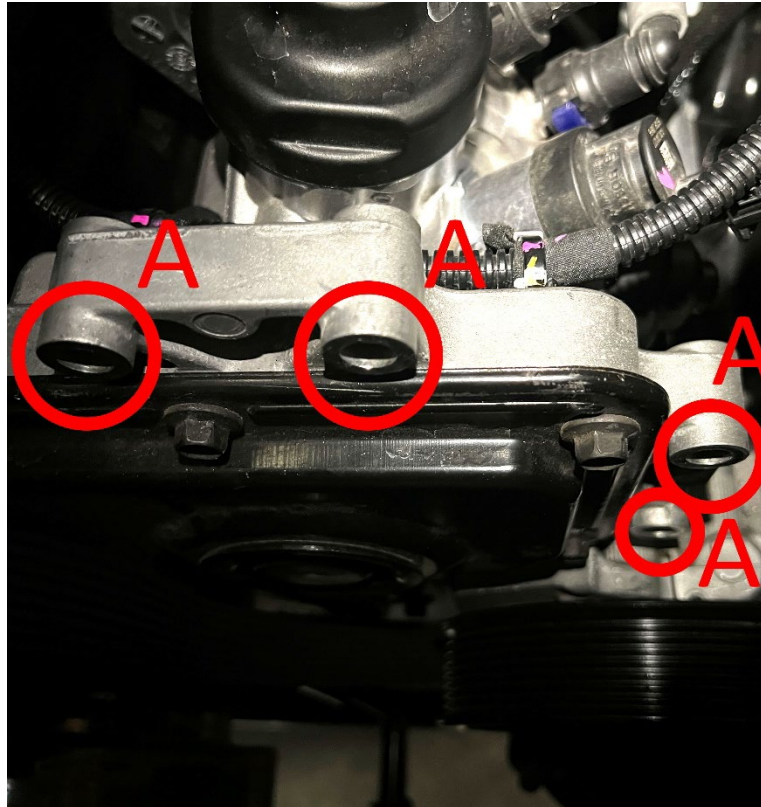


**Muncie®
Power
Products**

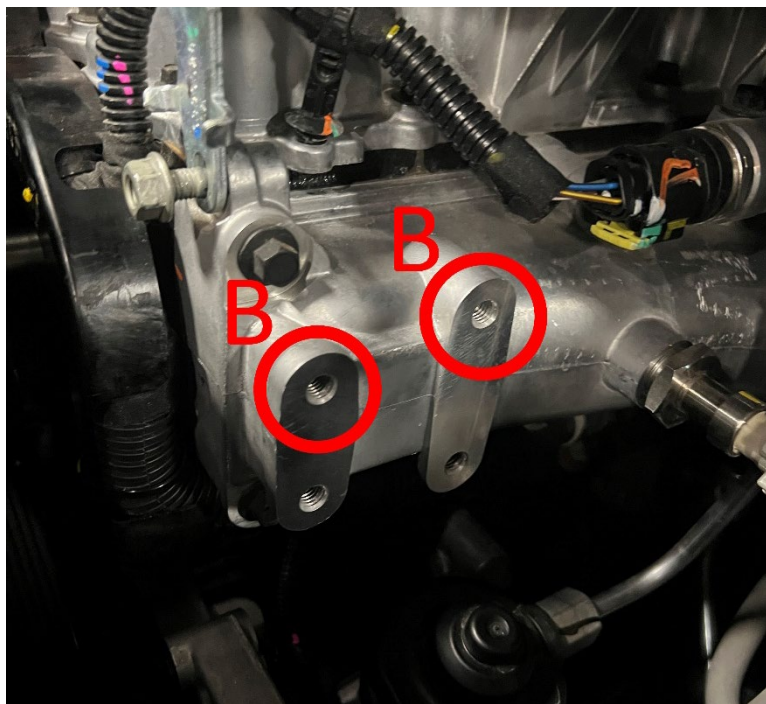
CMKD25-6700-YP8-AC

2025-2026 RAM 2500-5500
6.7L I6 Cummins Diesel w/ A/C, w/o OEM Dual Alternators

For use w/ Muncie SAE Two-Bolt 'A' Flange Pump
Must use Muncie 8-Groove, 5-1/2" Diameter Clutch
Recommend 1.75in³ or 8gal Pump w/ 12hp Restriction or Smaller
Approximately 145% Overdriven w/ 5-1/2" Diameter Clutch
NOTE: Must Use Side-Ported Pump



Main Bracket Mounting Location [A]



Main Bracket Support Brace Mounting Location [B]

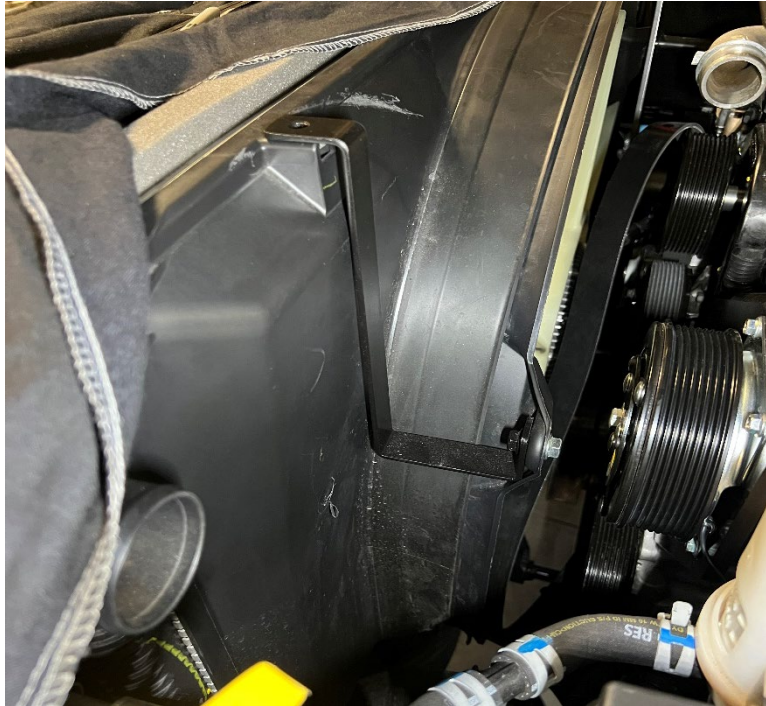


**Muncie®
Power
Products**

CMKD25-6700-YP8-AC

2025-2026 RAM 2500-5500
6.7L I6 Cummins Diesel w/ A/C, w/o OEM Dual Alternators

For use w/ Muncie SAE Two-Bolt 'A' Flange Pump
Must use Muncie 8-Groove, 5-1/2" Diameter Clutch
Recommend 1.75in³ or 8gal Pump w/ 12hp Restriction or Smaller
Approximately 145% Overdriven w/ 5-1/2" Diameter Clutch
NOTE: Must Use Side-Ported Pump



Fan Shroud Support Brace



2025-2026 RAM 2500-5500

**For use w/ Muncie SAE Two-Bolt 'A' Flange Pump
Must use Muncie 8-Groove, 5-1/2" Diameter Clutch
Recommend 1.75in³ or 8gal Pump w/ 12hp Restriction or Smaller
Approximately 145% Overdriven w/ 5-1/2" Diameter Clutch**

INSTALLER NOTES / DISCLAIMER

This image shows a blank sheet of white paper with horizontal ruling lines. The lines are evenly spaced and run across the width of the page. There are no margins, text, or other markings on the paper.

11/13/2025