



**Muncie®
Power
Products**

CMKE00-4900-A-AC

**1999-2004 Mitsubishi
Engine Model 4M50 4.9 L**

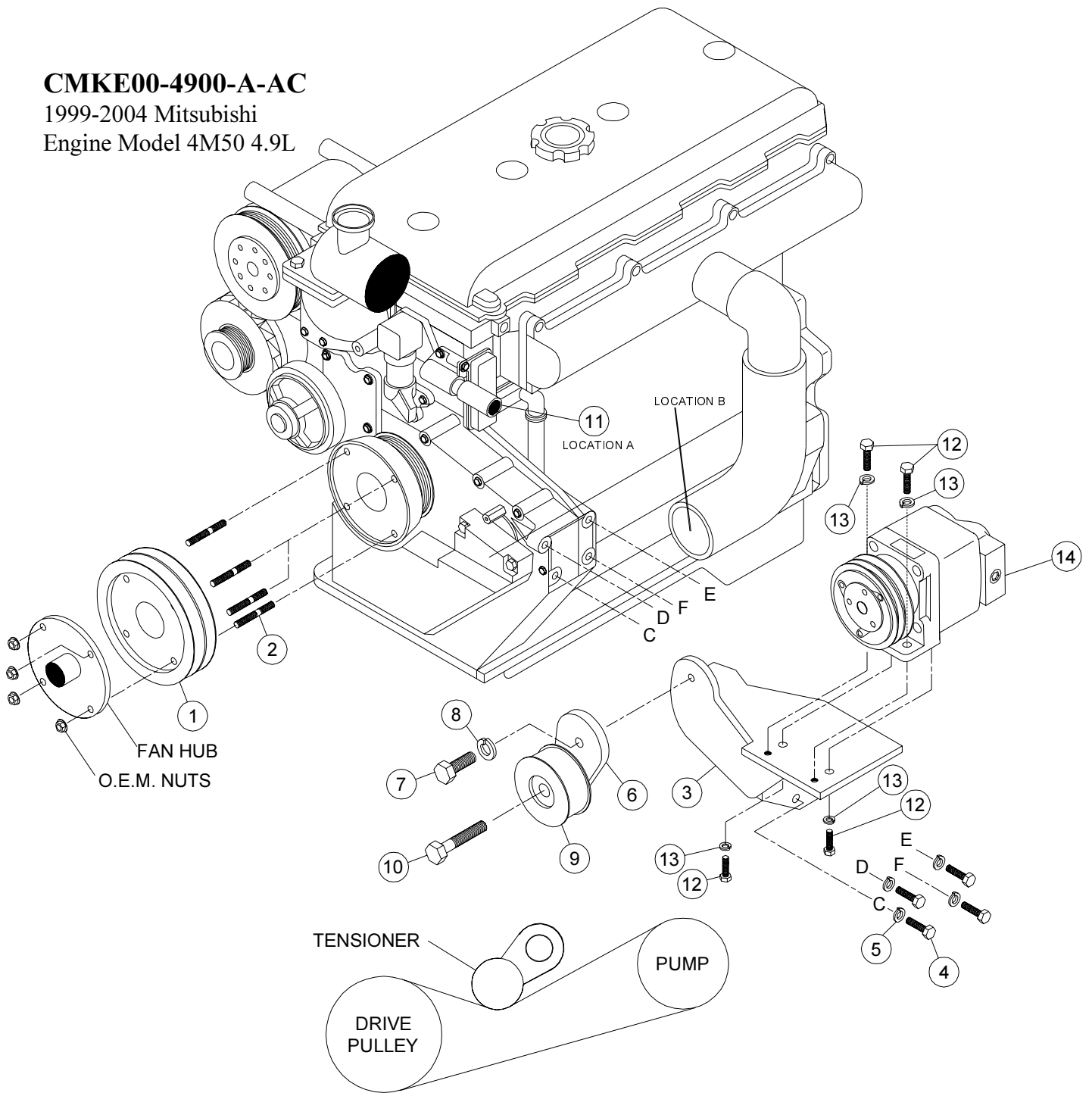
INSTALLATION NOTES

1. Disconnect the negative battery cable. Drain the engine coolant until coolant level is below the thermostat housing. Undo top radiator hose, remove fan and shroud. Remove heater hose (A). Remove turbo tube (B). Remove OEM studs from drive pulley.
2. Install new studs (2) in drive pulley. Install the shroud. Install pulley (1) and the fan with OEM nuts. Install the pump bracket (3) with bolts (4) & lockwashers (5). Reinstall turbo tube. Be sure to start all bolts before tightening any of the bolts. Install replacement heater hose (11) using OEM hose clamps. Install pump with bolts (12) & lockwashers (13). Install belt tensioner (6) onto pump bracket (3) using bolt (7) & lockwasher (8). Install belts (16) and tighten by using bolt (10), and then tighten bolt (7).
3. Replace engine coolant and reconnect battery cable. Run engine and check for proper belt tracking and clearance of all moving parts.

CMKE00-4900-A-AC

1999-2004 Mitsubishi

Engine Model 4M50 4.9L



BELT ROUTING

PARTS LIST

- | | |
|-----------------------|---|
| 1. MPC 412 | 9. IPCD Idler (1) |
| 2. 8mm x 65 studs (4) | 10. 17mm x 2 <i>Lefthand Thread Locktite</i> (1) |
| 3. MMB 411 (1) | 11. 5/8 Formed Hose (1) |
| 4. 10mm x 30mm (4) | 12. 3/8 x 1 (4) |
| 5. 10mm LW (4) | 13. 3/8 LW (4) |
| 6. MMB 412 (1) | 14. Clutch Pump Assembly (<i>Sold Separately</i>) |
| 7. 12mm x 35mm (1) | 15. 84490 V Belt(Dayco) (2) |
| 8. 12mm LW (1) | |