



**Muncie[®]
Power
Products**

CMKF02-5468-YP6-AC

2002-03 Ford Truck F-250-550

2002-03 Ford Van E-250-450

5.4L & 6.8L Triton, W/AC

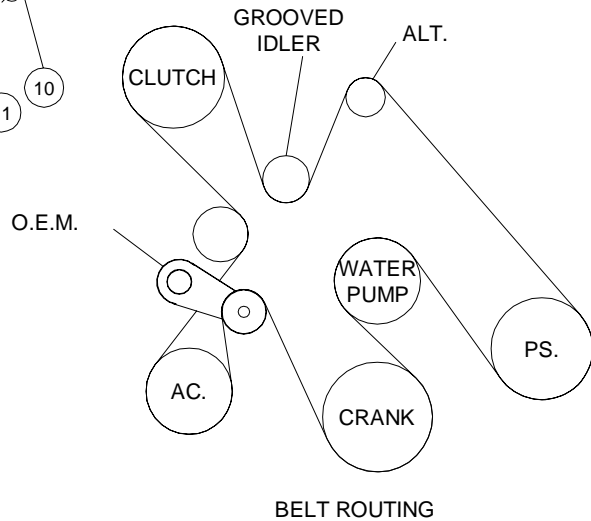
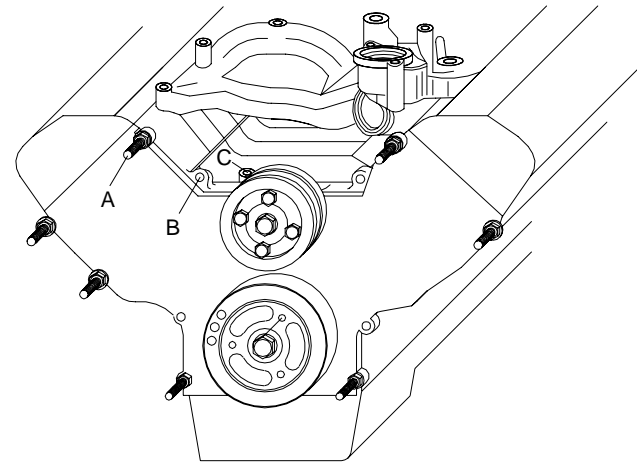
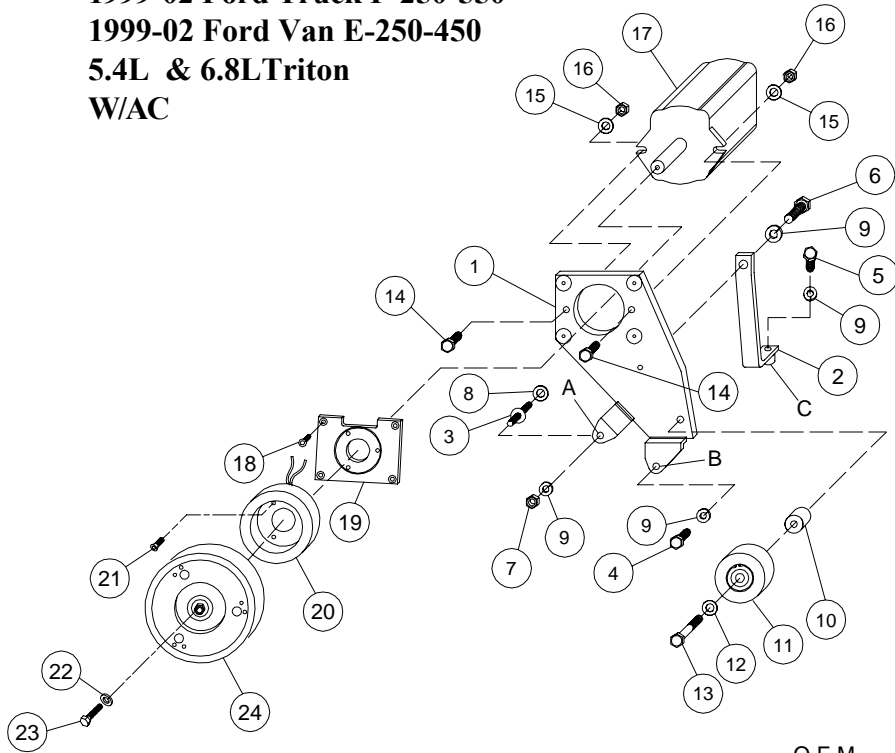
INSTALLATION NOTES

1. Disconnect the negative battery cable. Remove the accessory drive belt from the engine. Remove the stud at location "A" and replace it with stud (3) and shim washer (8). Torque to 35ft/lbs.. Remove the O.E.M. idler from the engine, and remove the bolt at location "B". Remove the stamped steel brace from the top of the alternator.
2. Install bracket (1) on to the stud at location "A". Install bolt (4) with lockwasher (9) at location "B", and nut (7) with lockwasher (9) at location "A". Torque nut (7) and bolt (4) to 35ft/lbs.. Install brace (2) with bolt (5) and lockwasher (9) at location "C", and bolt (6) with lockwasher (9) to the back side of bracket (1). Tighten them evenly, then torque to 35ft/lbs..
3. Install the stamped steel brace back onto the alternator with the O.E.M. bolts. The brace may need to be trimmed if it hits the pump bracket. Install idler, spacer, washer and bolt (10,11,12,13) onto the main bracket and torque to 30ft/lbs.. Install the O.E.M. idler onto the engine. Install pump (17) onto the bracket with bolts (14), lockwashers (15), and nuts (16). Torque to 30ft/lbs.. Install the coil adapter (19) with bolt (18), torque to 8-10ft/lbs.. Install coil (20) with bolts (21). Torque to 8-10 ft/lbs.. Install the clutch with bolt (23) and washer (22), torque to 20ft/lbs..
4. Install the new drive belt according to the belt diagram. It is easiest to install the belt over idler (11) last. Connect the battery cable. Run the engine and make certain the belt tracks properly, and is in the grooves on all the pulleys.

NOTE: The heater hose coming out of the intake manifold may need to be rerouted. There is a restrictor in the hose that is used to cut down on water noise in the heater core. If the heater hose is replaced, it should be installed in the new hose.

CAUTION: Check all engine compartment hoses and wiring to insure they are not kinked, touching any high temperature item, or do not interfere with any linkage components.

CMKF02-5468-YP6-AC
1999-02 Ford Truck F-250-550
1999-02 Ford Van E-250-450
5.4L & 6.8L Triton
W/AC



PARTS LIST

- | | |
|------------------------|---|
| 1. FMB 390AI6 (1) | 15. 3/8 LW (2) |
| 2. FMB 391AI6 (1) | 16. 3/8 NC Nut (2) |
| 3. 10107 1.5 ST. (1) | 17. Clutch Pump Assembly (<i>Sold Separately</i>) |
| 4. 10mm x 60mm 1.5 (1) | 18. 1/4 X 3/4 NC FHSCS (4) |
| 5. 10mm x 35mm 1.5 (1) | 19. MCA01 Clutch Mtg Plate (1) |
| 6. 10mm x 20mm 1.5 (1) | 20. Coil (<i>Sold Separately</i>) |
| 7. 10mm Nut 1.5 (1) | 21. Capscrew-19T34530 (3)(t=8-10 ft/lbs) |
| 8. .80 Shim Washer (1) | 22. Flat Washer-21MZ3487 (1) |
| 9. 10mm LW (4) | 23. Capscrew-19T38756 (1)(t=20 ft/lbs) |
| 10. FMB392AI6(1) | 24. Clutch (<i>Sold Separately</i>) |
| 11. TIPCS (1) | 25. 5061300 (Dayco) (1) |
| 12. 12mm LW (1) | |
| 13. 12mm x 65mm(1) | |
| 14. 3/8 x 1-1/2 NC (2) | |