



**Muncie®  
Power  
Products**

**CMKF03-6001-ZP8-AC**

**2003 Ford**

**Truck F-250-550**

**6.0 Diesel**

**W-WO/AC, W/Dual Alt.**

## **INSTALLATION NOTES**

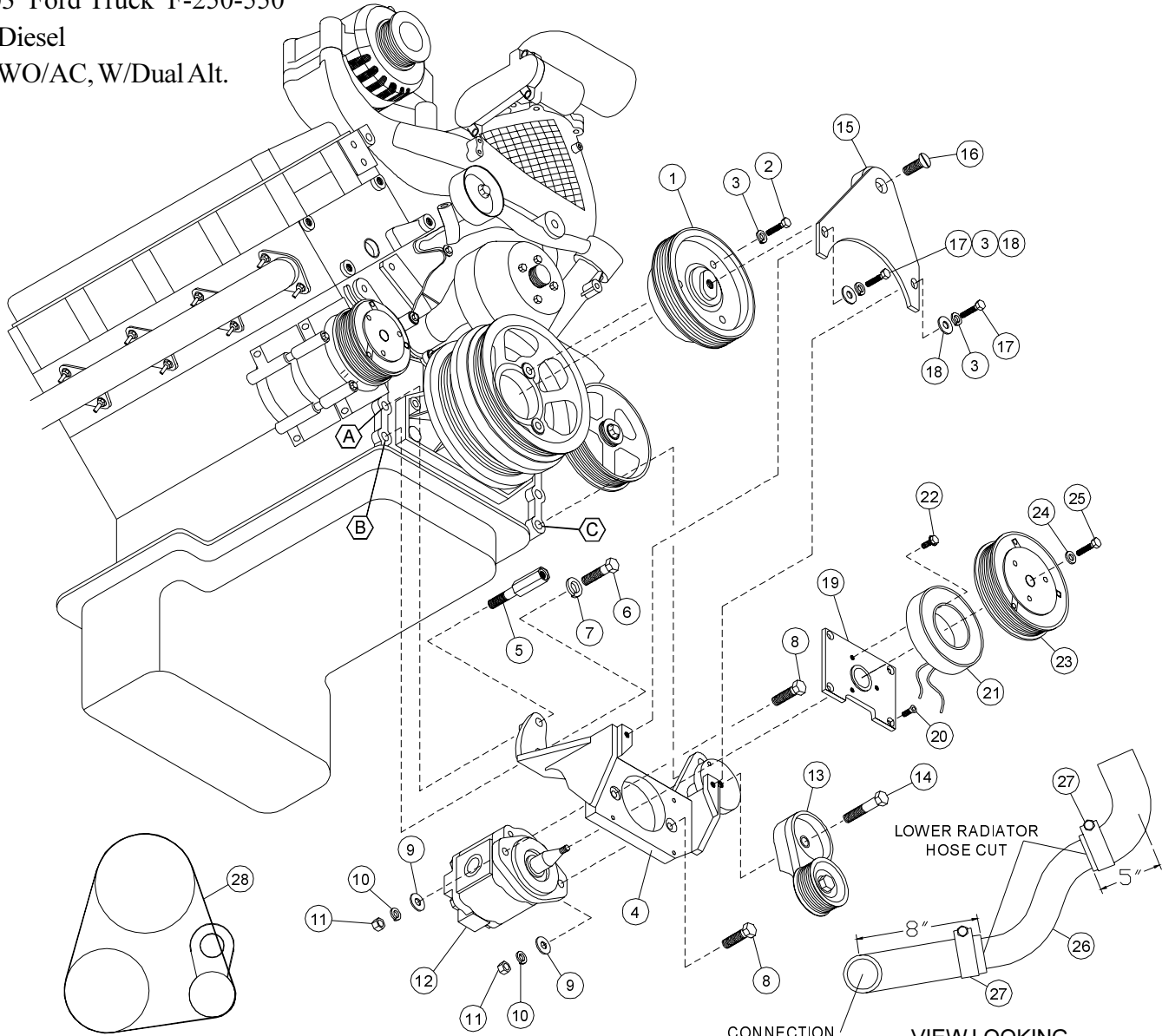
1. Disconnect the negative battery cables. Drain the engine coolant. Remove the upper radiator hose and overflow tube from radiator. Disconnect the fan clutch wire. Remove the two bolts from the fan shroud and raise it up approximately a foot. With the fan shroud raised, remove the fan clutch wire harness from the fan diffuser so the fan shroud can be removed completely without breaking the plastic wire support. Remove the five bolts from the fan diffuser, unscrew the fan from the water pump and remove the diffuser and fan together from the engine compartment. Remove alternator belt. Remove studs from locations "A", "B", & "C". Remove bottom radiator hose.
2. Remove the bolts from O.E.M. 6-groove drive pulley. Install new drive pulley (1) over O.E.M. pulley with bolts (2) and lockwashers (3). Torque bolts to 40ft/lbs. Reinstall alternator belt. Install pump (12), belly up, to bracket (4) as shown in illustration using bolts (8), flatwashers (9), lockwashers (10), and nuts (11). Install bracket (4) with bolts (5) in locations "A" & "C", bolt (6), and lockwasher (7) in location "B" with ground cable. Torque bolts to 40 ft/lbs. Some trimming may be required on connector of ground cable. Install coil and clutch per manufacturer's instructions. Install tensioner (13) with bolt (14).
3. Put belt (28) into place without installing on tensioner. Install support bracket (15) with bolt (16) making sure it is properly coupled with pulley. Install bolts (17), lockwashers (3), and flatwashers (18). After all bolts are tight install new belt (28). Cut bottom radiator hose approximately 5" below top bend in hose, and approximately 8" from bottom bend (according to diagram). Install new line (26) in between hose using clamps (27). Make sure hose clears steering arm with wheels of truck turned in both directions. Cut two bottom fins out of diffuser for pump clearance.
4. Reinstall diffuser, fan, and fan shroud, upper radiator hose and overflow tube. Replace the antifreeze and connect the battery cables. Run the engine and check for proper belt tracking and clearances.

# CMKF03-6001-ZP8-AC

2003 Ford Truck F-250-550

6.0 Diesel

W-WO/AC, W/Dual Alt.



## BELT ROUTING

## PARTS LIST

1. FPC 698 (1)
2. 10mm x 90mm (3)
3. 10mm LW (5)
4. FMB 690 (1)
5. FMB 692 (2)
6. 12mm x 45mm (1)
7. 12mm LW (1)
8. 3/8 x 1-1/2 (2)
9. 3/8 FW (2)
10. 3/8 LW (2)
11. 3/8 Nut NC (2)
12. Clutch Pump Assembly  
(Sold Separately)
13. 89217-TGPCD8P Tensioner (1)
14. 12mm x 80mm (1)
15. FMB 691 (1)

16. 1/2 x 1-3/4 NC CSK (1)
17. 10mm x 25mm (2)
18. 10mm FW (2)
19. MCA01 (1)
20. 1/4 x 3/4 NC FHSCS (4)
21. Coil (Sold Separately)
22. Capscrew-19T34530 (3)  
(t=8-10 ft/lbs)
23. Clutch (Sold Separately)
24. Flat Washer-21MZ3487 (1)
25. Capscrew-19T38756 (1)  
(t=20 ft/lbs)
26. FMB 693 2" Pipe (1)
27. 2"-2-1/2" Hose Clamp (2)
28. 5080690 Dayco (1)