



**Muncie®
Power
Products**

CMKF04-590M-YP8-AC

**2004-2007 Ford 650 & 750
5.9 L Cummins up to 230 HP.
W/AC, W-W/O Air Brakes**

INSTALLATION NOTES

1. Disconnect negative battery cables. Remove the turbo cooler tube from the passenger side engine compartment and remove the rubber couplers from the steel tube. Remove the O.E.M. belt, alternator, alternator bracket, and lifting lug from the passenger side of the engine.
2. Install the pump bracket (1) with bolts (2). Torque bolts to 40 ft/lbs. Remove the top two air conditioner mounting bolts. Install bracket (3) with bolts (4) and lock washers (5). Do not tighten. Install bolts (6), thru bracket (1) into brace (3). Tighten bolts (4) and (6) finger tight; then torque bolts (6) to 40 ft. lbs. and bolts (4) to 25 ft. lbs.
3. Install the pump into bracket (1) with bolts (4), lock washers (8), and nuts (9) torque bolts to 30-35 ft. lbs. Install the coil adaptor (16) with bolts (17). Torque bolts (17) to 8-10 ft. lbs. Install the coil and clutch as per manufacturer instructions. Install idler (13), bushing (14), and bolt (15). Torque bolt to 30 ft. lbs. Install the O.E.M. alternator with spacers (10) lock washers (11), and bolts (12). Install the new belt (24) according to the belt diagram. Install the O.E.M. turbo cooler tube backwards from its original location using new elbows (25) and clamps (26). Align the tube for best fit then tighten clamps securely.
4. Use the plastic tie straps (27) supplied in the kit to secure any hoses, wires, etc., that may come in contact with any hot or moving parts. Reconnect battery cables. Run engine and check for proper belt tracking and clearances.

NOTE: Check all engine compartment vacuum hoses and electrical wiring that may have been disturbed or rerouted during kit installation to be sure that hoses are not kinked, that they do not touch any high temperature items, and that they do not interfere with any linkage components.

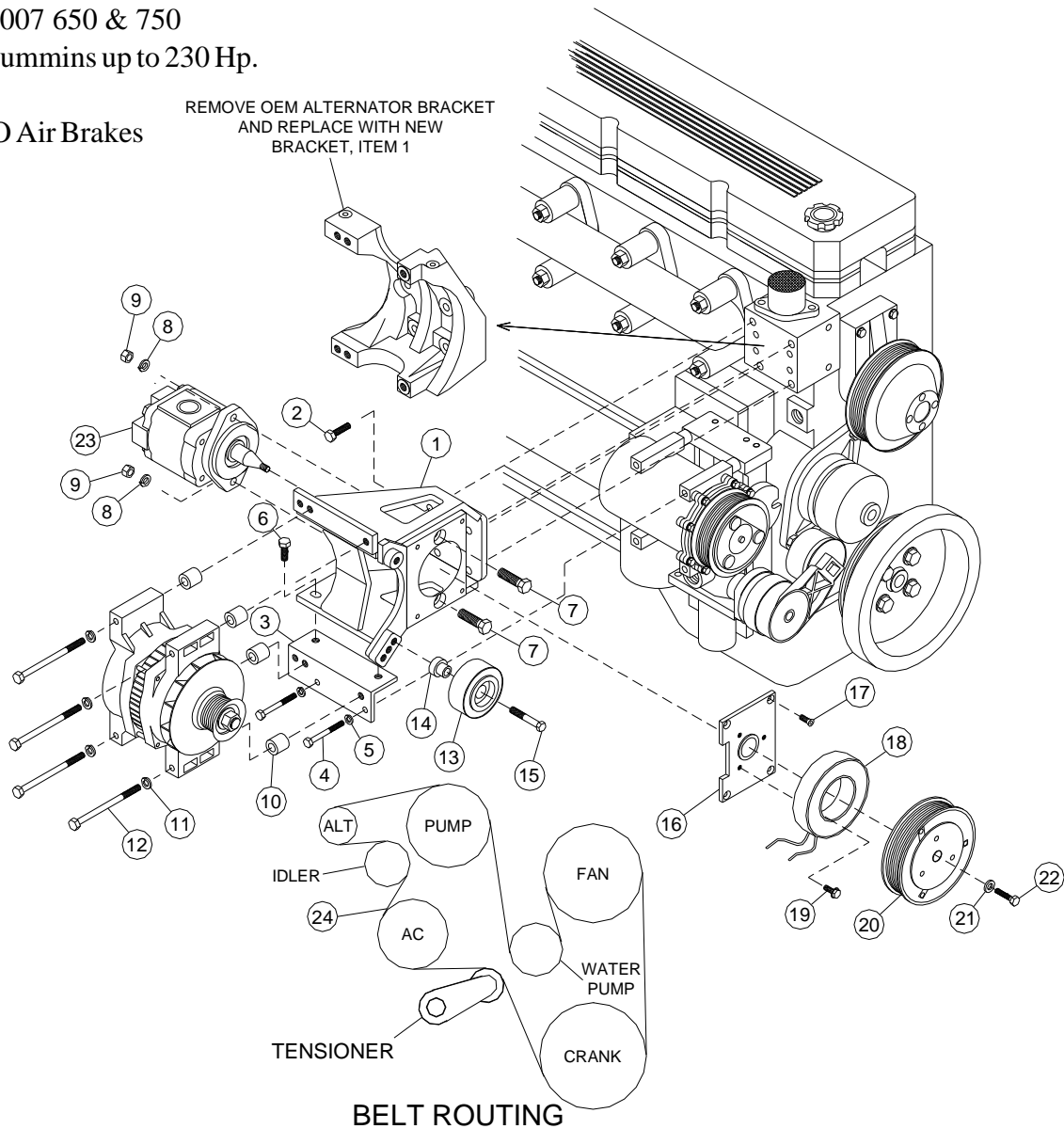
CMKF04-590M-YP8-AC

2004-2007 650 & 750

5.9 L Cummins up to 230 Hp.

W/AC

W-W/O Air Brakes



PARTSLIST

1. FMB271A (1)
2. 10mm x 30mm Flange Bolt (4)
3. FMB2711 (1)
4. 8mm x 90mm (2)
5. 8mm LW (2)
6. 10mm x 20mm Flange Bolt (2)
7. 3/8 x 1-1/2 NC (2)
8. 3/8 LW (2)
9. 3/8 Nut (2)
10. SP100-1.00 (4)
11. 10mm LW (4)
12. 10mm x 120mm x 10.9 (4)
13. 89007 Dayco (1)
14. FMB 2731 (1)
15. 10mm x 40mm Flange Bolt (1)
16. MCA01 (1)
17. 1/4 x 3/4 FHSCS (4)
18. Coil (Sold Separately)
19. Capscrew-19T34530 (3)
(t=8-10 ft/lbs)
20. Clutch (Sold Separately)
21. Flat Washer-1411C (2)
22. Capscrew-19T38756 (1)
(t=20 ft/lbs)
23. A Flange Clutch Pump
(Sold Separately)
24. 5080953 Dayco (1)
25. TP1189 Elbow (2) (Not Shown)
26. 250-92 Clamp (4) (Not Shown)
27. Plastic Tie Strap (5) (Not Shown)