



1. Disconnect the negative battery cable. Drain the engine coolant. Remove the upper radiator hose and overflow hose from the radiator. Remove the air duct. On 5.4L engines, remove and discard the air duct brace. Remove the fan and fan shroud. (Fan nut has right hand thread. Remove air cleaner duct on 5.4L only.)
2. Clean any dirt or rust from the damper then install the pulley drive adapter (1) onto the damper with bolts (2). Torque to 40 ft. lbs. Remove the nut and cable support from the stud at location "F". Bend or cut the cable support out of the way, then secure it with tie straps. Install the drive belt onto the pulley with the belt inside the legs at locations "E" and "F", and over the leg at location "G". Install the pulley assembly (3) onto the engine with lockwashers (4), nuts (5), and bolt (6). Torque nuts and bolt to 30-35 ft. lbs.
3. Remove the two nuts from the studs at locations "A" and "B". Remove the radio noise suppressors and torque the studs to 25 ft. lbs. **(IMPORTANT) Replace the radio noise suppressors back onto the studs. On 2011 6.8L engines shim (28) and nut (29) will be used at location (B).** Remove the bolt from the idler at location "C". **Do not remove the idler.** Re-route the wires that run across the front of the passenger side valve cover to allow the bracket to be installed without pinching any of the wires. *Note: On 05-07 5.4L engines, it may be necessary to trim the plastic nipple from the air cleaner box. On 08 and newer chassis the resonator will need to be cut from the the air intake tube as shown and capped with the plug (26) and grommet (27) provided in the kit.* Install the main bracket onto the engine with the O.E.M. nuts at location "A" and "B", lockwasher (15) with bolt (16) at location "D", and lockwasher (15) with bolt (17) at location "C". Torque nuts and bolts to 25 ft. lbs.
4. Install idler (19) with bushing (18), lockwasher (20), and bolt (21) onto the main bracket. Torque the bolt to 35-40 ft. lbs. Attach mounting plate (8) to pump base using bolts (9), bolts (10), lockwashers (11), and nuts (12). Torque bolts to 35 ft. lbs. Install pump assembly to bracket (7) using lockwashers (11), and bolts (14). Align it with the drive pulley, then torque bolts to 35 ft. lbs. Install the tensioner (22) with bolt (23). Torque to 25 ft. lbs. Install the drive belt according to the belt diagram. Install the appropriate fan spacer nut. *Note: 5.4L only cut the passenger side resonator from the air cleaner duct and install it back onto the engine.*
5. Replace the fan and fan shroud. Install the radiator hose and overflow hose. Replace the air duct. On 5.4L engines, the resonator will need to be cut from the main air duct tube to gain belt clearance. Connect the battery cable and replace the engine coolant. Run the engine and check for proper belt tracking. Adjust if necessary.

NOTE: Check all engine compartment hoses and electrical wiring that may have been disturbed or rerouted during kit installation to be sure that hoses are not kinked, that they do not touch any high temperature items, and that they do not interfere with any linkage components.

NOTE: On 6.8L trucks equipped with push button 4 wheel drive, an additional bracket kit is required to relocate the vacuum canister. Part # FMB474A

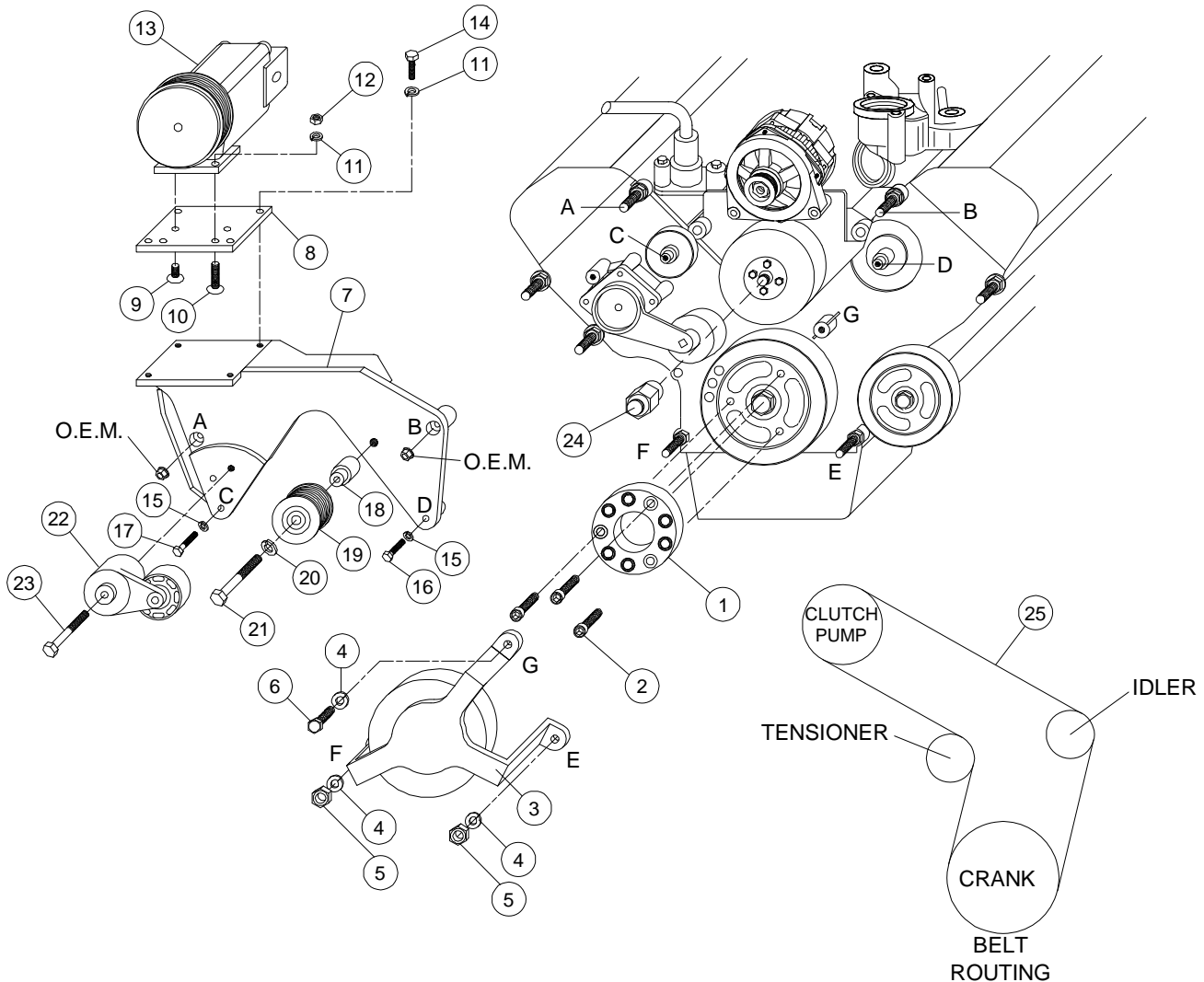
CMKF05-5468-LP8-AC

2005-2010 Ford F-250-550

5.4L, 6.8L, Triton 3-Valve

2011-Current 6.8L Engines

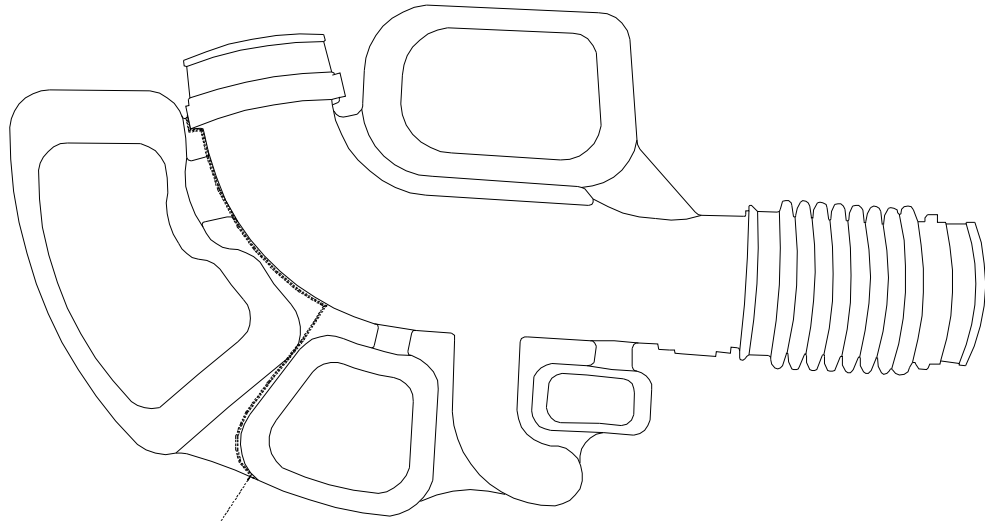
W-W/O AC, W/Bearing Support



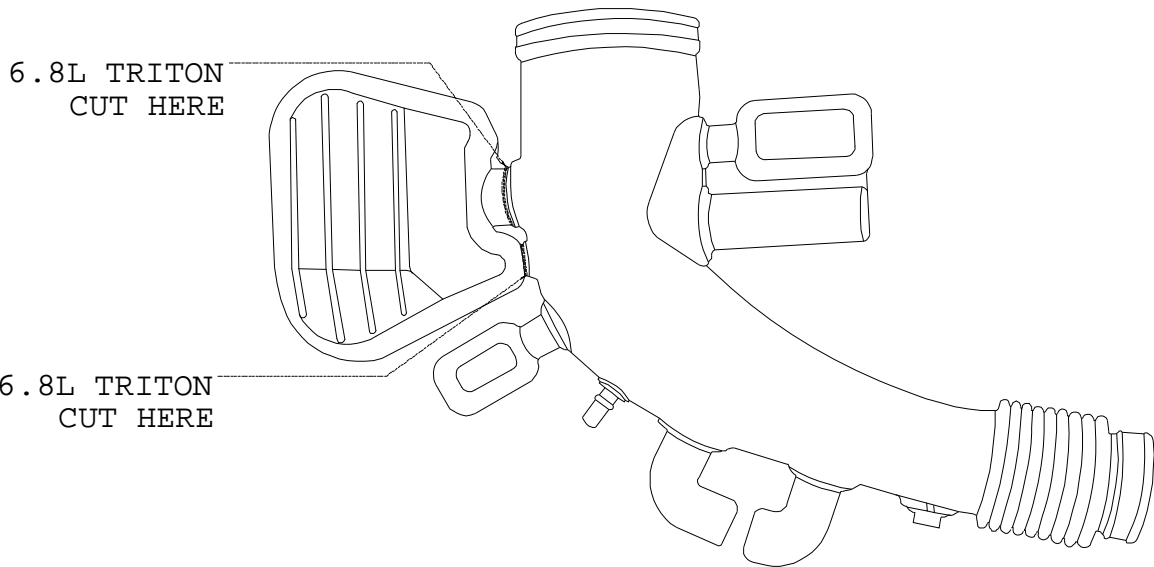
PARTS LIST

- | | |
|---|---|
| 1. FPA 45 (1) | 17. 8mm x 45mm 10.9 Bolt (1) |
| 2. 10mm x 20mm SHCS (3) | 18. FMB 473 (1) |
| 3. FPC458 Assembly (1) | 19. GPCD-8P (1) |
| 4. 10mm LW (3) | 20. 12mm LW (1) |
| 5. 10mm Nut (2) | 21. 12mm x 75mm 10.9 Bolt (1) |
| 6. 10mm x 40mm 10.9 Bolt (1) | 22. 89200B Tensioner (1) |
| 7. FMB471 (1) | 23. 10mm x 80mm 10.9 Bolt (1) |
| 8. FMP471 (1) | 24. FSK37R (used on 5.4L only) (1)
FSK6.8A (used on 6.8L only) (1) |
| 9. 3/8-16 x 1 GR8 FHSCS (2) | 25. Dayco Belt #5080715 |
| 10. 3/8-16 x 1-3/4 GR5 FHSCS (2) | 26. Aluminum Plug 1012646 (5.4L)
1012647 (6.8L) |
| 11. 3/8 LW (6) | 27. Rubber Grommet 1013038 (5.4L)
1007870 (6.8L) |
| 12. 3/8-16 Nut (2) | 28. .040" x 8mm Shim Washer (1) |
| 13. Clutch Pump Assembly (<i>Sold Separately</i>) | 29. 8mm Flange Nut (1) |
| 14. 3/8-16 x 1 Bolt (4) | |
| 15. 8mm LW (2) | |
| 16. 8mm x 35mm 10.9 Bolt (1) | |

MODIFICATIONS SHEET



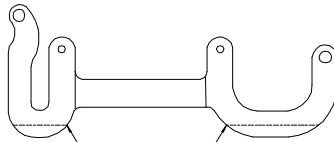
5.4L TRITON
CUT HERE



6.8L TRITON
CUT HERE

6.8L TRITON
CUT HERE

**2009 AND NEWER
MODIFICATION ONLY**



CUT ALONG LINE.
APPROX. 1/2"