



INSTALLATION NOTES

1. Disconnect the negative battery cable. Drain the engine coolant. Remove the upper radiator hose and overflow hose from the radiator. Remove the air duct. On 5.4L engines, remove and discard the air duct brace. Remove the fan and fan shroud. (Fan nut has right hand thread.)
2. Clean any dirt or rust from the damper then install the pulley drive adapter (1) onto the damper with bolts (2). Torque to 40 ft. lbs. Remove the nut and cable support from the stud at location "F". Bend or cut the cable support out of the way, then secure it with tie straps. Install the drive belt onto the pulley with the belt inside the legs at locations "E" and "F", and over the leg at location "G". Install the pulley assembly (3) onto the engine with lockwashers (4), nuts (5), and bolt (6). Torque nuts and bolt to 30-35 ft. lbs.
3. Remove the two nuts from the studs at locations "A" and "B". Remove the radio noise suppressors and torque the studs to 25 ft. lbs. **(IMPORTANT) Replace the radio noise suppressors back onto the studs. On 2011 6.8L engines use shim washer (32) and nut (33) at location (B).** Remove the bolt from the idler at location "C". **Do not remove the idler.** If the heater hose at location "H" comes in contact with the bracket, cut off as indicated in the illustration. Expand the steel band holding the check valve. Push the check valve past the 90° bend and crimp the steel band back on the hose to secure the check valve. Reconnect the heater hose. The heater hose should now turn back toward the cab instead of up and then back. Re-route the wires that run across the front of the passenger side valve cover to allow the bracket to be installed without pinching any of the wires. *Note: On 05-07 5.4L engines, it may be necessary to trim the plastic nipple from the air cleaner box. On 08 and newer chassis the resonator will need to be cut from the the air intake tube as shown and capped with the plug (30) and grommet (31) provided in the kit.* Install the main bracket onto the engine with the O.E.M. nuts at location "A" and "B", lockwasher (12) with bolt (13) at location "D", and lockwasher (12) with bolt (14) at location "C". Torque nuts and bolts to 25 ft. lbs.
4. Install idler (16) with bushing (15), lockwasher (17), and bolt (18) onto the main bracket. Torque the bolt to 35-40 ft. lbs. Install the clutch pump with bolts (8), lockwashers(9) ,and nuts(10). Install coil andapter(21) with bolts(22) . Install coil and clutch as per manufactures specifications. Install the tensioner (19) with bolt (20). Torque to 25 ft. lbs. Install the drive belt according to the belt diagram. Install the appropriate fan spacer nut.
5. Replace the fan and fan shroud. Install the radiator hose and overflow hose. Replace the air duct. On 5.4L engines, the resonator will need to be cut from the main air duct tube to gain belt clearance. Connect the battery cable and replace the engine coolant. Make certain any wires that were disturbed during installation do not come in contact with any hot or moving parts. Run the engine and check for proper belt tracking. Adjust if necessary.

NOTE: On 6.8L trucks equipped with push button 4 wheel drive, an additional bracket kit is required to relocate the vacuum canister. Part # FMB474A

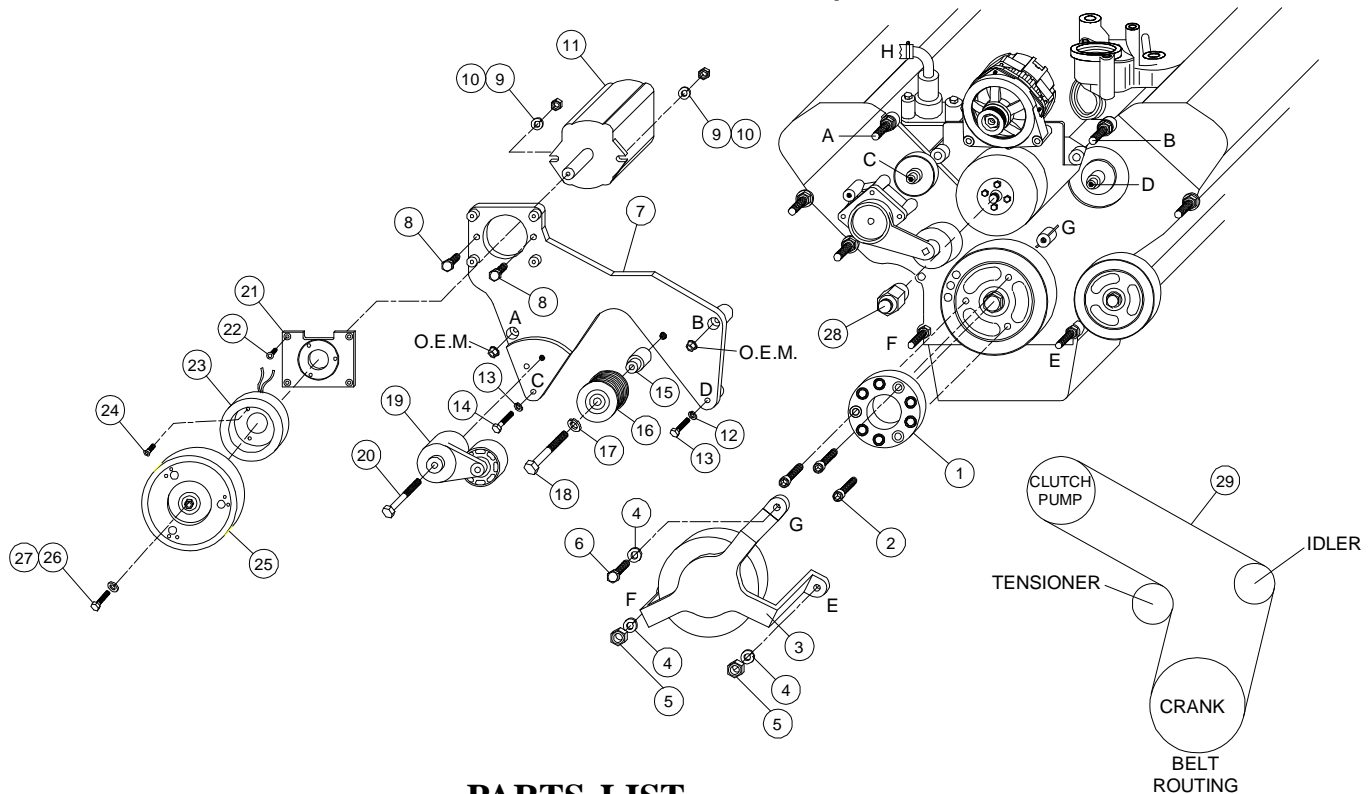
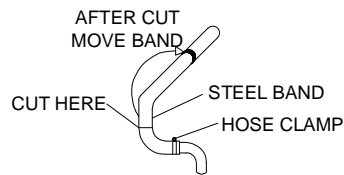
CMKF05-5468-SP8-AC

2005-2011 Ford F 250-550

5.4L, 6.8L, Triton 3-Valve

2011-Current 6.8L Engines

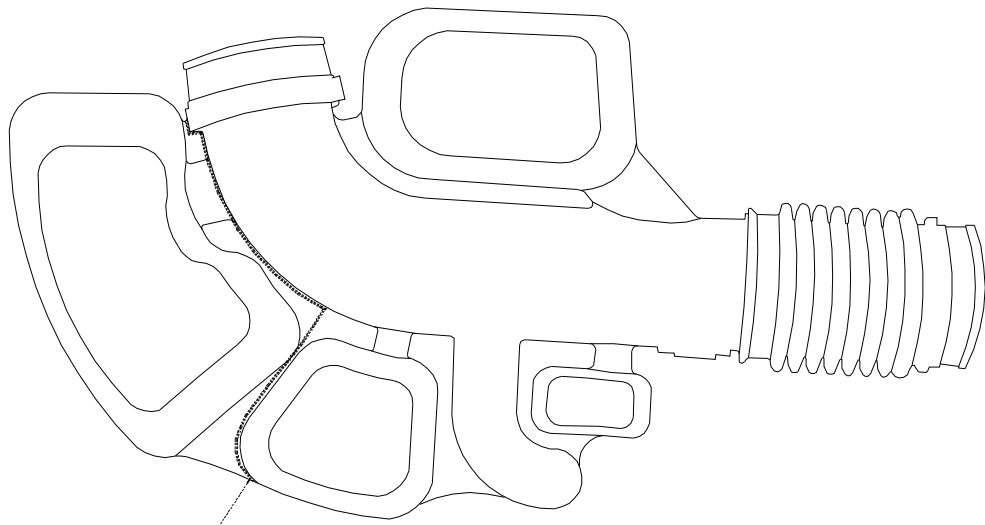
W-W/O AC, W/Bearing Support



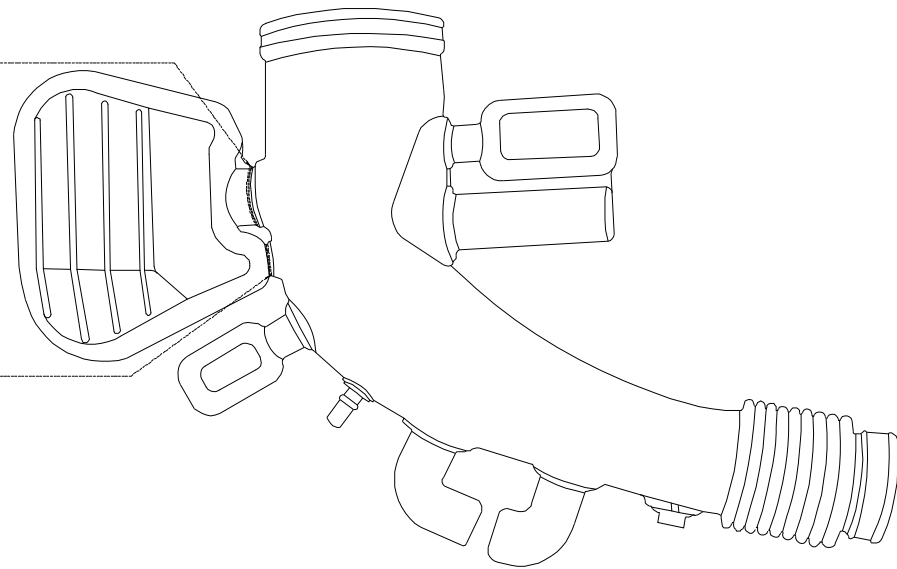
PARTS LIST

- | | |
|--|---|
| 1. FPA 45 (1) | 19. 89200B Tensioner (1) |
| 2. 10mm x 20mm SHCS (3) | 20. 10mm x 80mm 10.9 Bolt (1) |
| 3. FPC458 Assembly (1) | 21. MCA01 Cutch Mtg. Plate (1) |
| 4. 10mm LW (3) | 22. 1/4x 3/4 NC FHSCS (4) |
| 5. 10mm Nut (2) | 23. Coil (<i>Sold Separately</i>) (1) |
| 6. 10mm x 40mm 10.9 Bolt (1) | 24. Capscrew-19T34530 (3) (t=8-10 ft.lbs.) |
| 7. FMB47A (1) | 25. Clutch (<i>Sold Separately</i>) (1) |
| 8. 3/8-16 x 1-1/2 Bolt (2) | 26. Capscrew-19T38756 (1) (t=20 ft.lbs.) |
| 9. 3/8 LW (2) | 27. Flat Washer -21MZ3487 (1) |
| 10. 3/8-16 Nut (1) | 28. FSK37R (used on 5.4L only) (1)
FSK6.8A (used on 6.8L only) (1) |
| 11. Pump Assembly (<i>Sold Separately</i>) | 29. Dayco Belt #5080705 |
| 12. 8mm LW (2) | 30. Aluminum Plug 1012646 (5.4L)
1012647 (6.8L) |
| 13. 8mm x 35mm 10.9 Bolt (1) | 31. Rubber Grommet 1013038 (5.4L)
1007870 (6.8L) |
| 14. 8mm x 45mm 10.9 Bolt (1) | 32. .040" x 8mm Shim Washer (1) |
| 15. FMB 473 (1) | 33. 8mm Flange Nut (1) |
| 16. GPCD-8P (1) | |
| 17. 12mm LW (1) | |
| 18. 12mm x 75mm 10.9 Bolt (1) | |

MODIFICATIONS SHEET



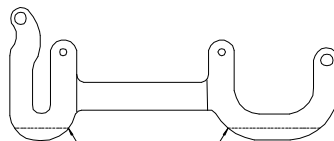
5.4L TRITON
CUT HERE



6.8L TRITON
CUT HERE

6.8L TRITON
CUT HERE

**2009 AND NEWER
MODIFICATION ONLY**



CUT ALONG LINE.
APPROX. 1/2"