



**Muncie[®]
Power
Products**

CMKF11-6200-P8W-AC
2011 - Current Ford Super Duty
6.2L Triton Gas
W/WO A/C

INSTALLATION NOTES

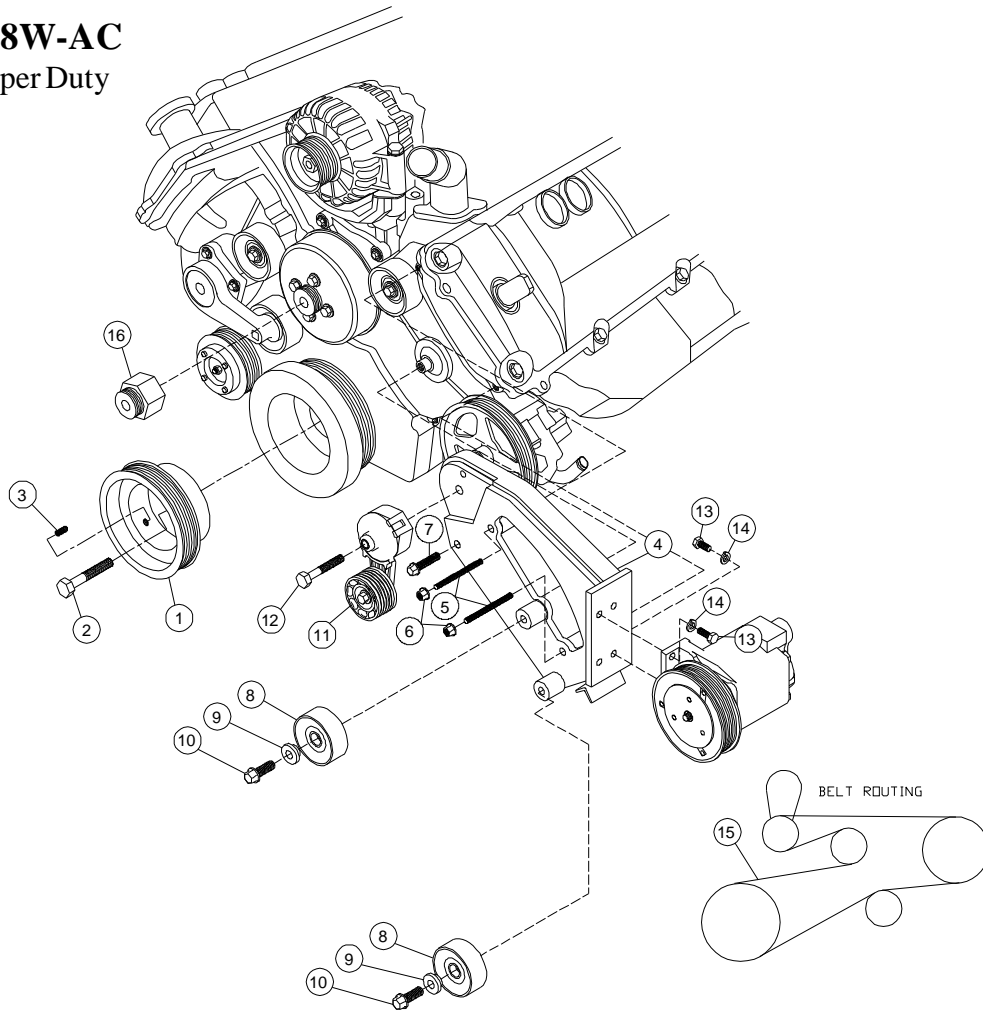
1. Disconnect the battery and drain engine coolant. Remove the fan and upper radiator hose. Fan has right hand threads. (It is not necessary to remove the fan from the fan shroud, but care must be taken not to damage the radiator). Remove the damper bolt and clean any silicon or dirt from the damper pilot. Install the pump drive pulley (1) using bolts (2,3). Torque bolt (2) to 150-160 ft. lbs. Install set screws (3) into the pulley using a mild grade of loc-tite and turn them in until they just make contact with the damper. Tighten them 1/8 turn at a time in a criss cross pattern until you reach 35-40 **Inch lbs.** NOTE: (ALLEN BOLTS MUST BE TIGHTENED EVENLY).
2. Remove the water pump. Install new water pump(30) according using O.E.M. hardware. Remove the clip holding the hose onto the radiator reservoir and remove the hose. Remove the power steering reservoir from the fan shroud and drain the fluid. Relocate the ABS module rearward with included hardware (26-31). Remove the top two bolts from the drivers side timing cover and install studs (5) into those locations. Remove the bolt from the idler on the passenger side, but leave the idler installed. Install the pump onto the bracket (4) using bolts (13) and lockwashers (14). Install the pump and bracket assembly onto the engine with the bottom bushing going over the existing idler location on the timing cover. Secure the bracket with bolt (7) and nuts (6). Install the idlers (8) onto the bracket using alignment bushings (9) and bolts (10). Install the tensioner (11) onto the bracket using bolt (12). Install the belt (15) as shown in the illustration.
3. Replace the upper radiator hose to its original location. Using hose (22), hose barb (23) and hose clamps (24,25), reroute the radiator reservoir hose. Approximately 1" can be cut from the nipple on the reservoir to let the 90 degree elbow go on further and gain more clearance to the pump. Install the power steering reservoir hose extension (26) using hose barb (27) and hose clamps (28). Replace and refill the reservoir. Use hose clamp (29) to secure the power steering hose to the bracket just below the clutch. Install the fan spacer (16) and fan.
4. Make certain all wires and hoses will not come on contact with any hot or moving parts. Run the engine and check for proper belt tracking.

CMKF11-6200-P8W-AC

2011-Current Ford Super Duty

6.2L Triton Gas

W/WO A/C



PARTS LIST

1. FPC488 (1)
2. 14mm x 120mm (1)
3. 8mm x 16mm Set Screw (3)
4. FMP 481-8 (1)
5. 8mm x 130mm Stud (2)
6. 8mm Flange Nut (2)
7. 8mm x 50mm Flange Bolt (1)
8. 89016 Dayco (2)
9. FMB480 Alignment Bushing (2)
10. 10mm x 30mm Flange Bolt (2)
11. 89213-8 Tensioner (1)
12. 12mm x 65mm Short Head (1)
13. 3/8 x 1 1/4 (4)
14. 3/8 Lockwasher (4)
15. 5080780 Dayco (1)
16. FSK 6.8B (1)

ITEMS 17-21 (ABS BRAKE MODULE KIT) NOT SHOWN

17. FMB 481 (Module Bracket) (1)
18. FMB 482 (Module Brace) (1)
19. FMB 483 (Module Brace) (1)
20. 8mm x 20mm Flange Bolt (1)
21. 8mm Flange Nut (3)

ITEMS 22-25 (COOLANT HOSE KIT) NOT SHOWN

22. FMB 484 (Coolant Hose Extension) (1)
23. 4200-16-16 Hose Barb (1)
24. #16 Hose Clamp (3)
25. #20 Hose Clamp (2)

ITEMS 26-29 (P.S. HOSE KIT) NOT SHOWN

26. 4' of 3/4" Oil Hose (1)
27. 4200-12-12 Hose Barb
28. #12 Hose Clamp (2)
29. #20 Hose Clamp (1)
30. 6.2L Heavy Duty Water Pump (1)