



**Muncie®
Power
Products**

CMKF92-7300-A-AC

1992-94 Ford Truck 250,350,450

7.3 Diesel W-WO/AC

(Serpentine)

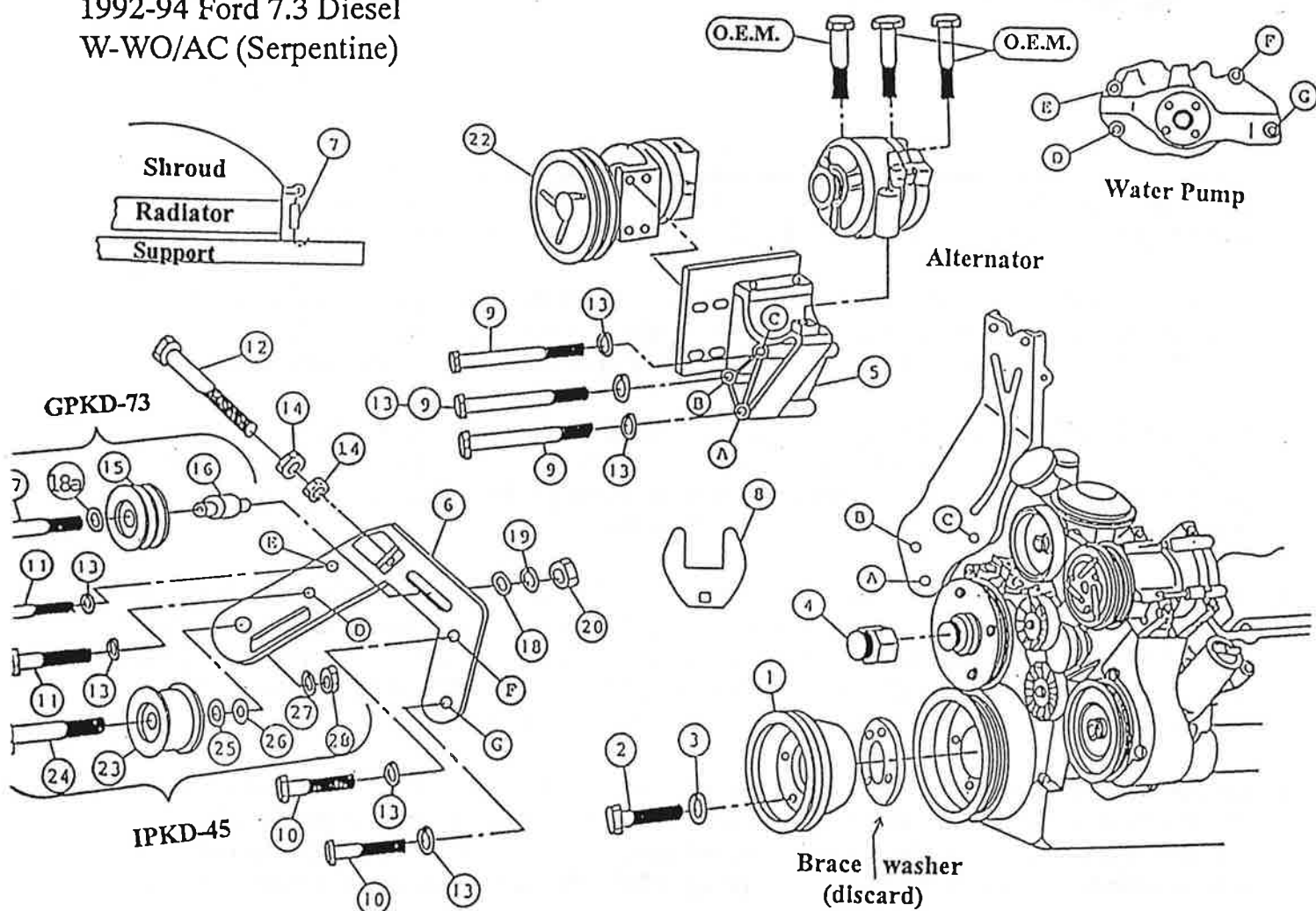
INSTALLATION NOTES

1. Disconnect positive battery terminals. Remove serpentine belt and shroud. Use wrench (8) to hold water pump pulley then remove fan (left hand thread).
2. Remove and discard bolts and 5" O.D. steel brace washer from pulley on front of crankshaft. Install drive pulley (1) with provided bolts (2) and washers (3).
CAUTION: Be sure new bolts have the same threads as the O.E.M. bolts removed.
3. Remove alternator and aluminum alternator bracket. Install bracket (5) at locations "A,B,C" with bolts and washers (9) and (13). Install pump (22) to bracket (5) with pump bolts provided. Align clutch pulley with drive pulley (1), secure pump bolts. Install alternator to bracket (5) with O.E.M. bolts.
4. Install bracket (6) to water pump at open threaded hole locations "D-G" with bolts and washers (10,11,13). Install grooved idler (15) to bracket (6) (leave loose), install flat idler (IPKD-45) if being used. Install serpentine belt, make sure belt is properly positioned in all pulleys. Install pump drive belt (21). Using jackbolt (12), adjust idler (15) for proper belt tension. Tighten bolt (17) and jamnuts (14).
5. Install fan spacer nut (4). Install fan and shroud. Tighten fan and spacer nut to 163 ft/lbs. (factory recommended spec.) (left hand thread). **NOTE:** A mild grade of Loctite type sealant on threads may be advisable. Install turnbuckles (7) to hold standard radiator in place or slightly ahead. **IMPORTANT:** Remove radiator X brace straps on engine side of radiator.
6. Check and tighten all bolts. Connect battery terminal. Re-tighten belts after break in period.
7. **CAUTION:** Check all engine compartment vacuum hoses and electrical wiring that may have been disturbed or re-routed during kit installation to be sure that hoses are not kinked, that they do not touch any high temperature item, and that they do not interfere with any linkage components.

NOTE: This kit is designed to operate successfully with the standard fan supplied by the manufacturer of your truck. Due to O.E.M. assembly tolerances, visually make certain that there is adequate clearance between fan and drive pulley, and also between fan and radiator. If there is little clearance to the radiator, check to insure that it will not flex into the radiator before operating. It is not uncommon for radiator to flex toward fan while driving at highway speed or through rough terrain. Provide adequate clearance before operating, move radiator forward if necessary. Turnbuckles provided usually keep standard radiator from being blown into fan but cannot keep truck from flexing. Super cooling radiator is secured better and normally will not blow into fan.

NOTE: Tighten belt to eliminate excessive belt whip.

CMKF92-7300-A-AC
1992-94 Ford 7.3 Diesel
W-WO/AC (Serpentine)



PARTS LIST

- | | |
|-----------------------------|----------------------------------|
| 1. FPC 642 (1) | 12. 3/8 X 3-1/2 NC Set Screw (1) |
| 2. 3/8 X 1-3/4 NC GR. 8 (4) | 13. 3/8 LW (7) |
| 3. 3/8 LW (4) | 14. 3/8 NC (2) |
| 4. FSK 7392 (1) | 15. GPCD 73 (1) |
| 5. FMP 641 (1) | 16. GPSA 73 (1) |
| 6. FMB 640 (1) | 17. 5/8 X 4-1/2 SP NC (1) |
| 7. Turnbuckles (2) | 18. 5/8 FW (1) |
| 8. Fan Pulley Wrench (1) | 18a. IPW10 FW (1) |
| 9. 3/8 x 5-1/2 NC (3) | 19. 5/8 LW (1) |
| 10. 3/8 x 2 1/4 NC (2) | 20. 5/8 NC (1) |
| 11. 3/8 X 1 3/4 NC (2) | 21. 2A66 (1) (Not Shown) |
| | 22. Clutch Pump Assembly (1) |
| | (Sold Separately) |

IDLER ASSEMBLY (IPKD-45)

- | | |
|------------------------|-----------------|
| 23. IPCD (1) | 26. 5/8 FW (15) |
| 24. 5/8 X 4-1/2 NC (1) | 27. 5/8 LW (1) |
| 25. IPW14 FW (5) | 28. 5/8 NC (1) |