



CMKF99-5468-ZP8-AC

1999-2003 Ford F-250-550

1999-2003 Ford Van E-150-450

5.4, 6.8 W-WO/AC

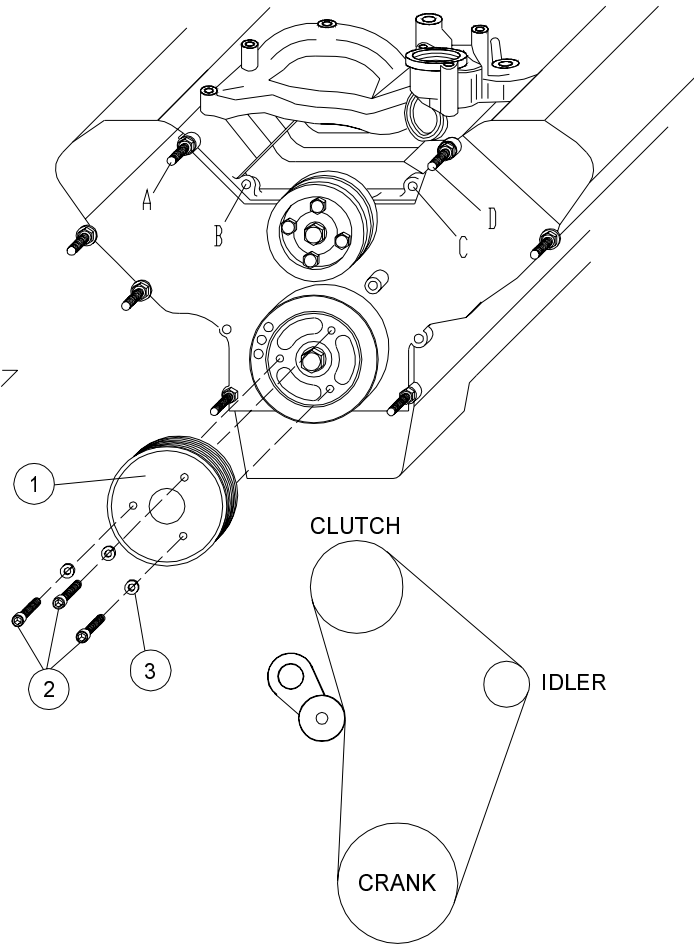
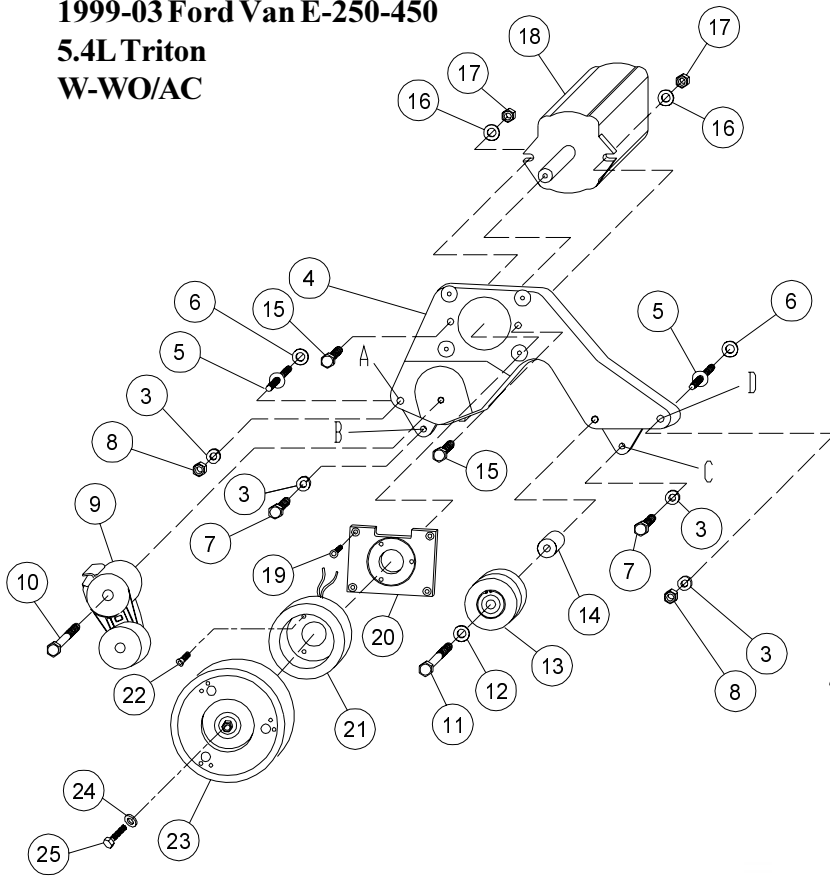
INSTALLATION NOTES

1. Disconnect the negative battery cable. On E-series vans, remove the complete air cleaner assembly. Remove the fan and fan shroud. (Fan nut has right hand threads). Remove the O.E.M. serpentine belt and the flat idler on the passenger side of the engine. Remove the studs at locations "A & D" and install studs (5) with flatwashers (6). Torque studs to 35 ft/lbs.. Remove bolts at locations "B & C".
2. Install drive pulley (1) onto the harmonic balancer with bolts (2) and lockwashers (3). Torque bolts to 40 ft/lbs.. Install the pump into the back of bracket (4) with bolts (15), flatwashers (16) and nuts (17). Install the coil adapter plate (20) with bolts (19) and torque to 8 ft/lbs.. Install the coil (21) and clutch (23) as per manufacturers instructions.
3. Install the bracket and pump assembly onto the studs at locations "A & D", install lockwashers (3) and nuts (8) at locations "A & D" and bolts (7) with lockwashers (3) at locations "B & C". Tighten bolts and nuts evenly, then torque to 35 ft/lbs..
4. Replace the OEM idler back to its original location. Replace the OEM belt. Install the pump tensioner (9) with bolt (10). Install the pump belt onto the engine according to the belt diagram. Replace the fan and fan shroud. Check for proper clearances between the fan and the clutch pump. Replace the air cleaner assembly if removed and connect the battery cable.

CAUTION: Check all engine compartment hoses and wiring to insure they are not kinked, touching any high temperature item, or do not interfere with any linkage components.

NOTE: Due to OEM assembly tolerances, visually make certain that there is adequate clearance between fan and drive pulley.

CMKF99-5468-ZP8-AC
1999-03 Ford Truck F-250-550
1999-03 Ford Van E-250-450
5.4L Triton
W-WO/AC



PARTS LIST

- | | |
|--------------------------|---|
| 1. FPC 368 (1) | 14. FMB 391 (1) |
| 2. 10mm x 60mm (3) | 15. 3/8 x 1 1/2 NC (2) |
| 3. 10mm LW (7) | 16. 3/8 LW (2) |
| 4. FMB 460A (1) | 17. 3/8 NC Nut (2) |
| 5. 10107 1.5 ST (2) | 18. Clutch Pump Assembly (<i>Sold Separately</i>) |
| 6. .080 shim (2) | 19. 1/4 x 3/4 SHCS (4) |
| 7. 10mm x 60mm 10.9 (2) | 20. MCA01 Clutch Mtg Plate (1) |
| 8. 10mm nut (2) | 21. Coil (<i>Sold Separately</i>) |
| 9. 8920236 Tensioner (1) | 22. Capscrew-19T34530 (3)(t=8-10 ft/lbs) |
| 10. 12mm x 80mm (1) | 23. Clutch (<i>Sold Separately</i>) |
| 11. 12mm x 65mm (1) | 24. Flat Washer-21MZ3487 (1) |
| 12. 12mm FW (1) | 25. Capscrew-19T38756 (1)(t=20 ft/lbs) |
| 13. GPCD 8 (1) | 26. 5080595 Dayco Belt (not shown) |