



Muncie[®] Power Products

CMKF99-6800-SP8-AC

1999-03 Ford Truck F-250-550

1999-03 Ford Van E-250-450

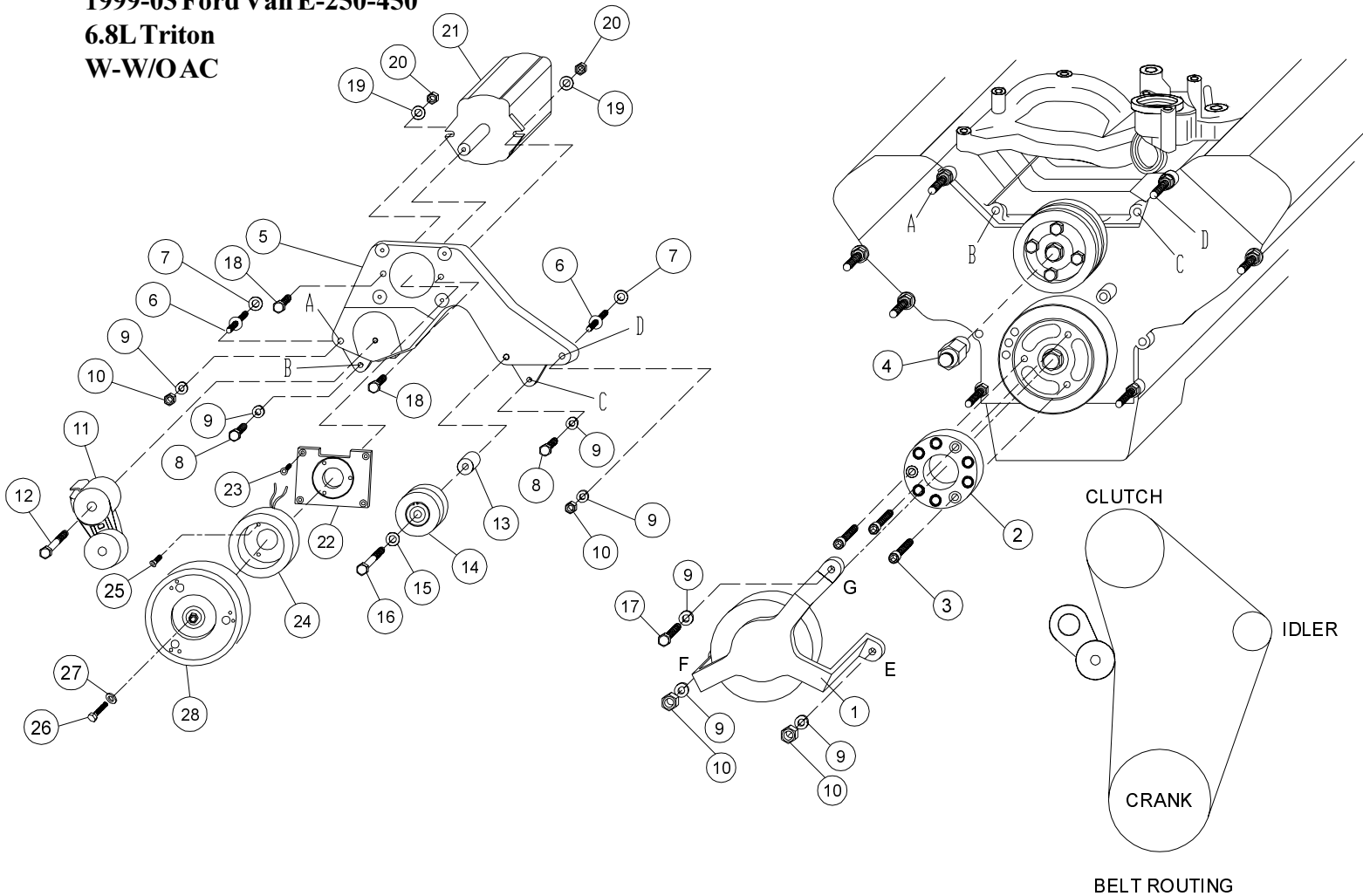
6.8L W-WO/AC

-
1. Disconnect the negative battery cable. On E-series remove the complete air cleaner assembly. Remove the fan and fan shroud. (Fan nut has right hand threads). Remove the O.E.M. serpentine belt and the flat idler on the passenger side of the engine. Remove the studs at locations "A & D" and install studs (6) with flatwashers (7). Torque studs to 35-40 ft/lbs.. Remove bolts at locations "B & C".
 2. Install the pump onto the backside of bracket (5) with bolts (18), lockwashers (19) and nut (20). Tighten securely. Install the pump and bracket assembly onto the studs at locations "A & D". Install bolts (8) with lockwashers (9) at locations "B & C" and nuts (10) with lockwashers (9) at locations "A & D". Tighten bolts and nuts evenly, then torque to 35-40 ft/lbs..
 3. Install the O.E.M. idler back to it's original location, and install the O.E.M. belt. Install the fan spacer nut (4), the pump tensioner (11) with bolt (12) and the grooved idler (14) with bushing (13), flatwasher (15) and bolt (16).
 4. Install the drive adapter (2) onto the damper with bolts (3), torque bolts to 40-45 ft/lbs.. Install the belt onto the pulley with the belt on the inside of the legs at locations "E & F", and over the leg at location "G". Slide the pulley over the O.E.M. studs at locations "E & F", make sure the drive pins are in the nylon bushings, all three legs should touch their mounting locations without using the bolt or nuts to pull it on. Torque bolt (17) and nuts (10) to 35-40 ft/lbs.. Install the pump drive belt.
 5. Install the fan, fan shroud, and air cleaner assembly if removed. Reconnect the battery cable. Run the engine to make certain the belt is tracking properly.

CAUTION: Check all engine compartment hoses and wiring to insure they are not kinked, touching any high temperature item, or do not interfere with any linkage components.

NOTE: Due to OEM assembly tolerances, visually make certain that there is adequate clearance between fan and drive pulley.

CMKF99-6800-SP8-AC
1999-03 Ford Truck F-250-550
1999-03 Ford Van E-250-450
6.8L Triton
W-W/O AC



PARTS LIST

- | | |
|---------------------------|---|
| 1. FPC 458 Assembly (1) | 15. 12mm FW |
| 2. FPA 45 Adapter (1) | 16. 12mm x 65mm (1) |
| 3. 10mm x 20mm SHCS (3) | 17. 10mm x 40mm (1) |
| 4. FSK 6.8 (1) | 18. 3/8 x 1-1/2 NC (2) |
| 5. FMB 460A (1) | 19. 3/8 LW (2) |
| 6. 10107 1.5 ST (2) | 20. 3/8 NC Nut (2) |
| 7. .080 shim (2) | 21. Clutch Pump Assembly (<i>Sold Separately</i>) |
| 8. 10mm x 60mm 10.9 (2) | 22. MCA01 Clutch Mtg Plate |
| 9. 10mm LW (7) | 23. 1/2 x 3/4 FHCS (4) |
| 10. 10mm Nut (4) | 24. Coil (<i>Sold Separately</i>) |
| 11. 8920236 Tensioner (1) | 25. Capscrew-19T34530 (3)(t=8-10 ft/lbs) |
| 12. 10mm x 80mm (1) | 26. Capscrew-19T38756 (1)(t=20 ft/lbs) |
| 13. FMB 461 Bushing (1) | 27. Flat Washer-21MZ3487 (1) |
| 14. GPCD-8 (1) | 28. Clutch (<i>Sold Separately</i>) |
| | 29. 5080595 Dayco Belt (not shown) |