



**Muncie<sup>®</sup>  
Power  
Products**

**CMKF99-7300-ZP8-AC**  
**1999-2002 Ford Truck 250-550**  
**7.3 Direct Injected Intercooled Diesel**  
**W-WO/AC or Dual Alternator**

## **INSTALLATION NOTES**

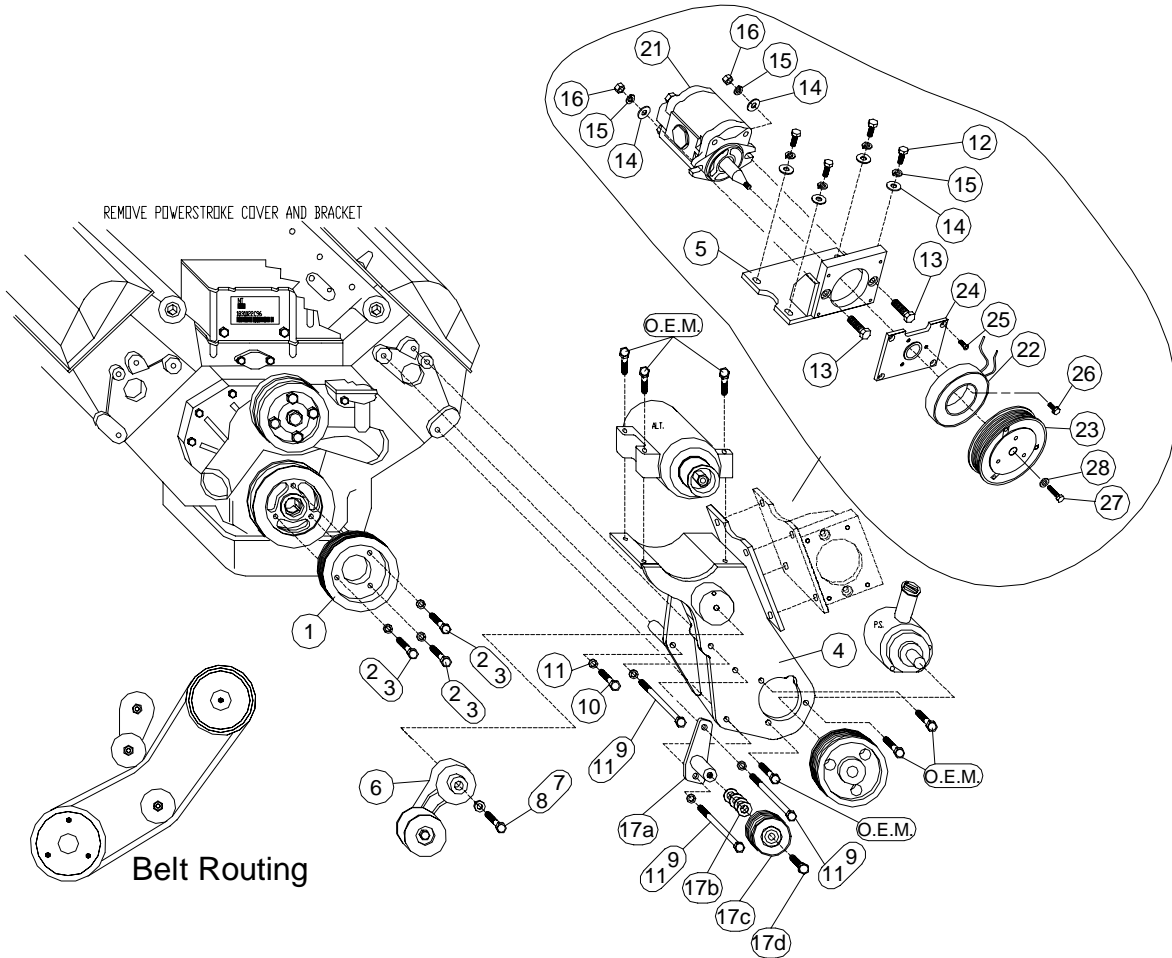
---

1. Disconnect negative battery terminals. Drain radiator until the coolant level is below the thermostat. Remove the upper radiator hose. Remove the fan and fan shroud. (*Fan nut has right hand threads*).
2. Install drive pulley (1) on the front of the harmonic balancer with bolts (2) and lockwashers (3).
3. Remove plastic 7.3 cover and it's mounting bracket from the top of engine. Unload belt tensioner and remove belt. Remove alternator from bracket and lay on top of engine.
4. Use powersteering pulley puller, (Snap-On PN# CJ117, MAC PN# PP7185M or it's equivalent) to remove powersteering pulley. Unbolt the three bolts holding the powersteering pump to the bracket, do not remove hoses from PS pump. Remove the four bolts holding the powersteering and alternator bracket to the engine and remove the bracket.
5. Install the new alternator and pump bracket (4) onto the engine using bolts (9 & 10) with lockwashers (11). Bolt the powersteering pump onto the new bracket using the O.E.M. bolts. Install the powersteering pulley onto the powersteering pump using a pulley installation tool, (Snap On PN# CJ113B, Mac PN# PP7005M or it's equivalent). Install the alternator onto bracket (4) using O.E.M. bolts. Install O.E.M. serpentine belt.  
**NOTE:** Since the alternator location was altered, the O.E.M. belt may fit slightly tighter.
6. Install pump (21) onto the pump plate (5) using bolts (13), flatwashers (14), lockwashers (15) and nuts (16). Torque bolts to 35 ft/lbs.. Install the coil adapter plate (24) to the pump plate with bolts (25). Install the coil and clutch pulley as per manufacturer's instructions. Install the pump and plate assembly onto the main bracket (4) using bolts (12), flatwashers (14) and lockwashers (15).
7. Install spring loaded tensioner (6) onto the tensioner boss (making sure that the line-up pin is in place) with bolt (7) and lockwasher (8), tighten.
8. Install the serpentine belt over the drive pulley and clutch pump pulley. With a 5/8" wrench, load the tensioner until it bottoms out. Slide the belt into place and release the tensioner.
9. Rotate the upper radiator hose so the radiator end is to the engine. Cut the hose approximately 8" from the short 90° bend, splice in the steel bent tube (18) using clamps (19). Install radiator hose and refill coolant. Use tie strap through hole in the front of the bracket just under the alternator to secure the radiator hose. Connect battery terminal.

**CAUTION:** Check all engine compartment vacuum hoses and electrical wiring that may have been disturbed or re-routed during kit installation to be sure that hoses are not kinked, that they do not touch any high temperature item, and that they do not interfere with any linkage components.

**CMKF99-7300-ZP8-AC**  
 1999-2002 Ford Truck 250-550  
 7.3 D.I.T. Intercooled Diesel  
 W-WO/AC/Dual Alternator

**CAUTION:** Due to limited space available in the engine compartment, the pump is mounted directly under the hood light. Check clearance between the light and the pump before closing the hood. If there is not enough clearance, relocate the hood light to provide clearance.



**PARTS LIST**

- 1. FPC 65812 (1)
- 2. 10mm x 40mm 1.5 (3)
- 3. 10mm LW (3)
- 4. FMB 660 (1)
- 5. FMP 66L (1)
- IPKD-668 (items 6-8)
- 6. Dayco 89202-TIPCS (1)
- 7. 12mm x 90mm 1.5 (1)
- 8. 12mm LW (1)
- 9. 10mm x 140mm 1.5 (3)
- 10. 10mm x 80mm 1.5 (1)
- 11. 10mm LW (4)
- 12. 3/8 x 1 NC (4)
- 13. 3/8 x 1 1/2 NC (2)
- 14. 3/8 FW (6)
- 15. 3/8 LW (6)
- 16. 3/8 NC Nut (2)

GPKDF 66-8 Assembly (items 17a-17d)

- 17a. FMB662 (1)
- 17b. IPW 14 Shim (4)
- 17c. GPCD8P (1)
- 17d. 5/8 x 2 1/2 NC (1)
- 18. F66 Rad. Line (*Not Shown*) (1)
- 19. #28 Hose Clamp (*Not Shown*) (2)
- 20. Belt (*Not Shown*) (1)  
 With 5-1/2" Clutch-Dayco # 5080675
- 21. Pump (*Sold Separately*)
- 22. Coil (*Sold Separately*)
- 23. Clutch Pulley (*Sold Separately*)
- 24. Clutch Mtg Plate
- 25. 1/4 X 3/4 NC FHSCS (4)
- 26. Capscrew-19T34530 (3)(t=8-10 ft/lbs)
- 27. Capscrew-19T38756 (1)(t=20 ft/lbs)
- 28. Flat Washer- 21MZ3487 (1)

Note: With 6" Clutch-5080685 Belt