



**Muncie®
Power
Products**

CMKF99-7302-ZP8-AC

1999-2003 Ford Truck 250-550

7.3 D.I.T. Intercooled Diesel

W-WO/AC,WO/Dual alternator

INSTALLATION NOTES

1. Disconnect the negative battery cables. Drain the engine coolant. Remove the jack tools, the upper radiator hose and the coolant over flow tank. Remove the fan shroud bolts and slide a piece of cardboard between the fan shroud and radiator to protect the radiator during assembly. Unscrew the fan nut and remove the fan and fan shroud from the engine compartment. (*Fan nut has right hand threads*).
2. Remove the OEM serpentine belt and tensioner. Remove the bottom two bolts from the tensioner bracket at locations "A & B" and the stud nut at location "C".
3. Install the drive pulley onto the engine damper with bolts (2) and lockwashers (3). Torque bolts to 45 ft./lbs.. Install the pump onto the bracket (5) with bolts (11), flatwashers (12), lockwashers (13) and nuts (14). Tighten. Install coil adapter plate (21) onto bracket (5) using bolts (22).
4. Install the pump and bracket assembly onto the engine with bolts (8) and lockwashers (3) at locations "A & B" and bolt (7) with lockwashers (6) at locations "C". Tighten bolts securely. Using bolt (15), lockwashers (6) and nut (16), attach the ground cable to the back, and the transmission cooler lines standoff to the front of the bushing located just below location "C".
NOTE: The transmission coolant lines will need to be bent down to clear the bottom of the bracket.
5. Install the coil and clutch as per manufacturer's instructions.
6. Replace the OEM tensioner and install the OEM serpentine belt. Install the pump tensioner (9) with bolt (10). Install the pump drive belt. Install the fan spacer nut, fan and fan shroud. Replace the upper radiator hose, coolant overflow tank and jack tools. Replace the engine coolant. Connect the battery cables. Run the engine to make sure the belt tracks properly and clears all wires, hoses, etc..

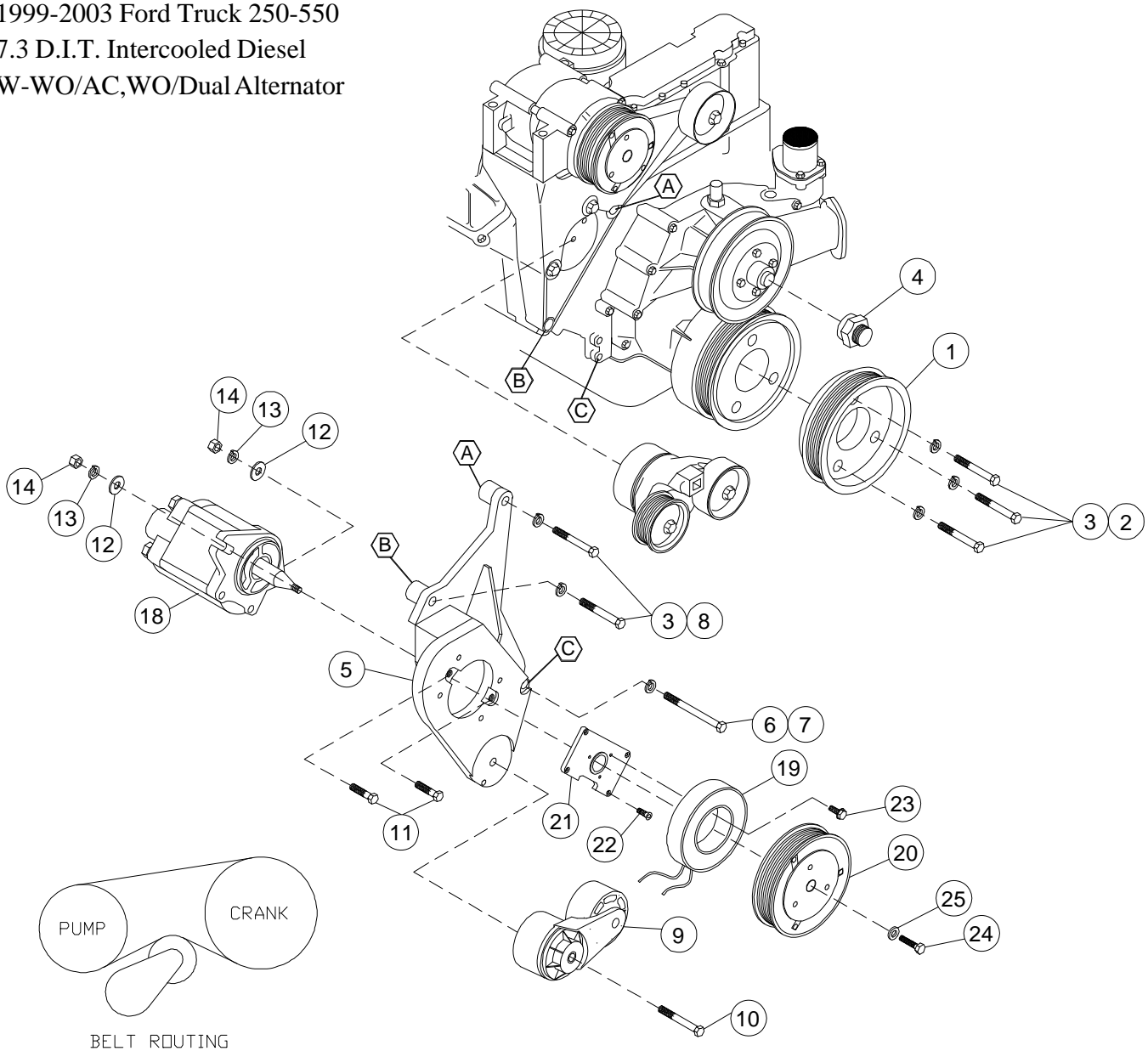
NOTE: Check all engine compartment vacuum hoses and electrical wiring that may have been disturbed or re-routed during kit installation to be sure that hoses are not kinked, that they do not touch any high temperature item, and that they do not interfere with any linkage components.

CMKF99-7302-ZP8-AC

1999-2003 Ford Truck 250-550

7.3 D.I.T. Intercooled Diesel

W-WO/AC,WO/Dual Alternator



BELT ROUTING

PARTS LIST

- | | |
|--------------------------|---|
| 1. FPC 65812 (1) | 15. 12mm x 45mm 1.75 (1)
(Not Shown) |
| 2. 10mm x 40mm 1.5 (3) | 16. 12mm Nut (1)
(Not Shown) |
| 3. 10mm LW (5) | 17. Belt (Not Shown) (1)
4080407 |
| 4. FSK 65 (1) | 18. Pump (<i>Sold Separately</i>) |
| 5. FMB 67A (1) | 19. Coil (<i>Sold Separately</i>) |
| 6. 12mm LW (2) | 20. Clutch (<i>Sold Separately</i>) |
| 7. 12mm x 160mm 1.75 (1) | 21. MCB001A (1) |
| 8. 10mm x 90mm 1.5 (2) | 22. 1/4 x 3/4 NC FHSCS (4) |
| 9. Dayco 89200 (1) | 23. Cap Screw 19T34530 (3) (t=8-10 ft/lbs.) |
| 10. 10mm x 80mm 1.5 (1) | 24. Cap Screw 19T38756 (1) (t=20 ft/lbs) |
| 11. 3/8 x 1 1/2 NC (2) | 25. Flat washer 21MZ3487 (1) |
| 12. 3/8 FW (2) | |
| 13. 3/8 LW (2) | |
| 14. 3/8 NC Nut (2) | |