



**Muncie®
Power
Products**

CMKI17-6000-YP6-AC

2003-2020 Isuzu N-Series
2003-2009 Chevy W3500-5500
2016-2020 Chevy LCF 3500-5500
2022-2023 Isuzu NQR / NRR
6.0L V8 Gas w/-w/o AC

Requires 6 Groove Clutch, SAE Two-Bolt 'A' Flange Pump
Recommended 1.75 in.³ or 8 gal. Pump w/ 12hp Restriction

INSTALLATION NOTES

1. The buyer is responsible for providing trained and experience installation decision making with technical know-how to apply professional judgment that specifically applies to each individual installation.
2. Be sure to read and understand all available information including but not limited to instructions, warnings, sale terms, and warranties for the vehicle and all system components prior to attempting installation.
3. Disconnect negative battery cable. Disconnect alternator wiring. Remove factory alternator. Replace the split bushing on the driver's side of factory alternator mount with the shortened split bushing (4) that is supplied in this kit.
4. Install mounting bracket (1) in the factory-alternator mount using the shortened head bolt (3) supplied in the same location as the shortened split bushing was installed and using the factory alternator bolt and bushing (5,6) in the other location. Install the brace (2) supplied in the kit, mounting the end with the spacer to the cylinder head directly behind the front exhaust port with bolt (10) and the other end of the brace to the mounting bracket with bolt (9).
5. Remove the factory flat idler, and replace it with the grooved idler (14) supplied in kit reusing the OEM hardware. Install the factory alternator to the auxiliary hydraulic clutch-pump bracket using the hardware provided (7,8) and reinstall the alternator wiring. Install smooth idler assembly (11-13). Install the hydraulic clutch-pump assembly with pump mounting hardware (17-25). Replace the rubber hose from the inlet of the vacuum pump with the new hose (15) using the hose clamps (16) provided. Install the belt (26) as shown in illustration below. Reconnect negative battery cable.

NOTE: Make certain any hose, wires or components that were relocated during installation are securely fastened and do not come in contact with any hot or moving parts.

Disclaimer: (1.) Due to the custom nature and variation of all add-on systems of this type, no complete system kits are offered by the manufacturer, and any group of parts marketed as a kit is limited to only the individually defined parts in that specific kit. The system designer's rotating accessory components are not included, offered, or fully known by the manufacturer. In addition to the absence of the rotating accessory system, other potential components such as additional clamps, brackets, wear liners, hardware, or other items that may be required by the system designer must be identified and supplied by the actual system designer. (2.) Due to vehicle manufacturer's assembly tolerances, production changes, and installation variances, it is the buyer's responsibility to ensure adequate clearance for all components including space for and safe location of the fan, radiator, all lines, and wires. Check for possible movement, vibration, friction points, heat exposure and/or shifting of any and all components such as hoses, wires, and all other components including those that may otherwise be considered non-moving and/or unaffected by the installation (3.) The buyer is responsible for the entire installation of a mounting kit as the mounting kit as the mounting kit is part of a custom process controlled by the buyer through their whole system design and directed installer as the installer evaluates, locates, routes, aligns, and tightens all components while determining if additional clamps, brackets, wear-liners, or other components may be required, beyond those included in the kit. Any additional items required, beyond those included in the kit, are to be provided at the expense of the buyer. (4.) the buyer is responsible for the development and communication of their whole system installation procedures, safety precautions, application, and use of the engine accessory mounting kit in their system, including efforts to maintain vehicle control and prevent pinch, wear, impact, and/or burn exposure on all hoses, wires, and other parts. (5.) The buyer is responsible for providing trained and experienced installation decision making with technical know-how to apply professional judgment that specifically applies to each individual installation. The buyers chosen installers must be qualified and experienced technicians that are familiar with the vehicle and accessory being mounted as well as the buyer's whole system design and installation procedures associated with the kit. (6.) The buyer is responsible for determining and achieving compliance to all regulatory issues that apply to the use of all products. (7.) The manufacturer reserves the right to make changes and/or improvements to any product at any time with or without notice.

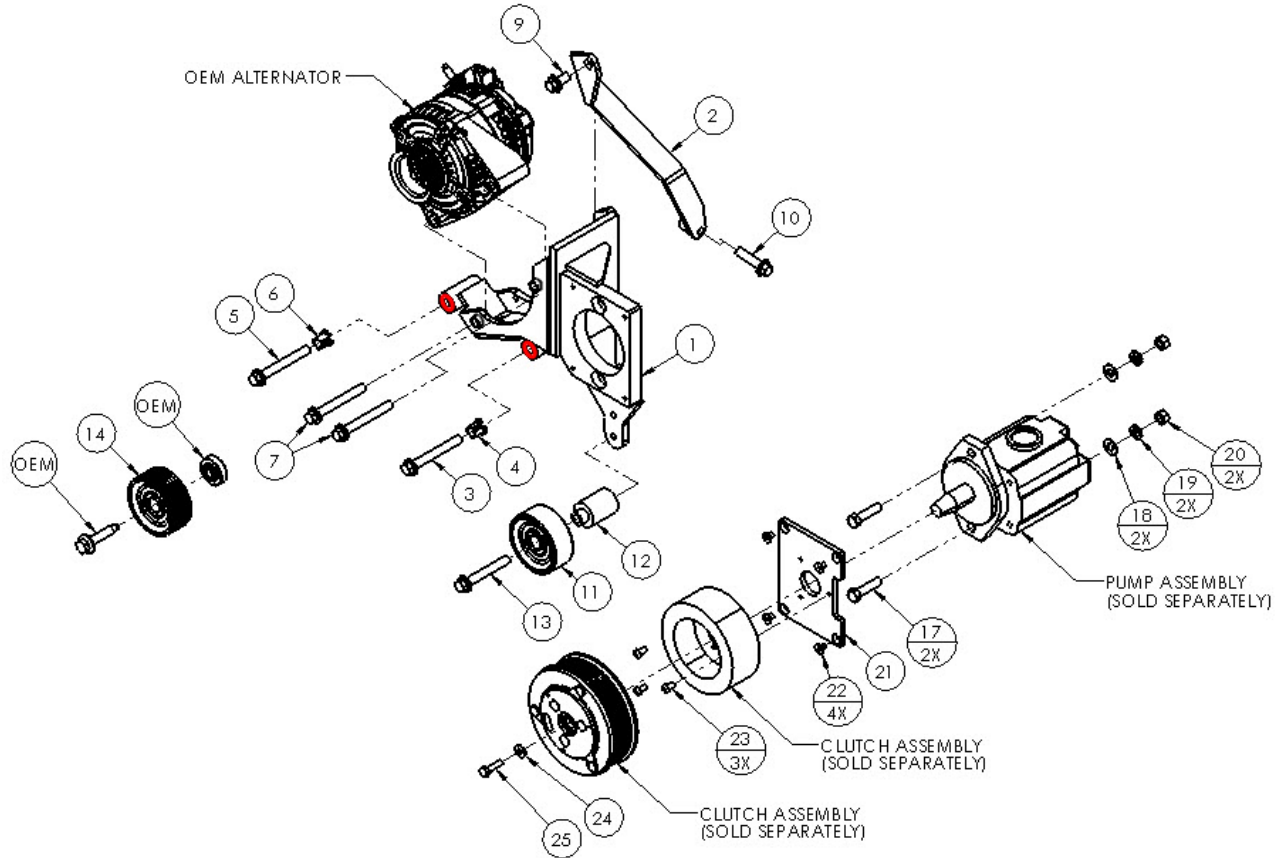


Muncie® Power Products

CMKI17-6000-YP6-AC

2003-2020 Isuzu N-Series
2003-2009 Chevy W3500-5500
2016-2020 Chevy LCF 3500-5500
2022-2023 Isuzu NQR / NRR
6.0L V8 Gas w/w/o AC

Requires 6 Groove Clutch, SAE Two-Bolt 'A' Flange Pump
Recommended 1.75 in.³ or 8 gal. Pump w/ 12hp Restriction



PARTS LIST

Item	Part Number	Description	Qty.	Item	Part Number	Description	Qty.
Main Bracket				Grooved Idler Pulley			
1	SMP38A	Main Bracket	1	14	89051	Grooved Idler Pulley	1
Support Brace				Vacuum Hose Kit (Not Shown)			
2	SMB381	Support Brace	1	15	1009849	11/32" Vacuum Hose	12"
Main Bracket Mounting Hardware				16	1018252	#6 Hose Clamp	2
Main Bracket Mounting Hardware				Pump Assembly Mounting Hardware			
3	1006928M	10mm x 80mm Flange Bolt w/ Short Head	1	17	1005139	3/8" x 1-1/2" Bolt	2
4	1011888AM	1255-0090 Split Bushing Shortened	1	18	1007644	3/8" Flat Washer	2
5	N/A	OEM Alternator Bolt	1	19	1010315	3/8" Lock Washer	2
6	N/A	OEM Split Bushing	1	20	1010314	3/8" Nut	2
7	1006928	10mm x 80mm Flange Bolt	2	21	MCA01	Coil Adapter Plate	1
8	1011888A	1255-0090 Split Bushing (Installed)	2	22	1007577	1/4" x 3/4" NC FHSCS	4
Brace Mounting Hardware				23	19T34530	Capscrew (T=8-10 ft/lbs)(Comes w/ Clutch)	3
9	1008390	10mm x 20mm Flange Bolt	1	24	21MZ3487	Flat Washer (Comes w/ Clutch)	1
10	1006933	10mm x 40mm Flange Bolt	1	25	19T38756	Capscrew (T=20 ft/lbs) (Comes w/ Clutch)	1
Smooth Idler Pulley Assembly				Belt			
11	IPCS2.5	Custom Smooth Idler Pulley	1	26	5061254	Dayco 6-Groove 125.4" Belt	1
12	SMB382	Machined Bushing	1				
13	1016343	10mm x 70mm Flange Bolt	1				

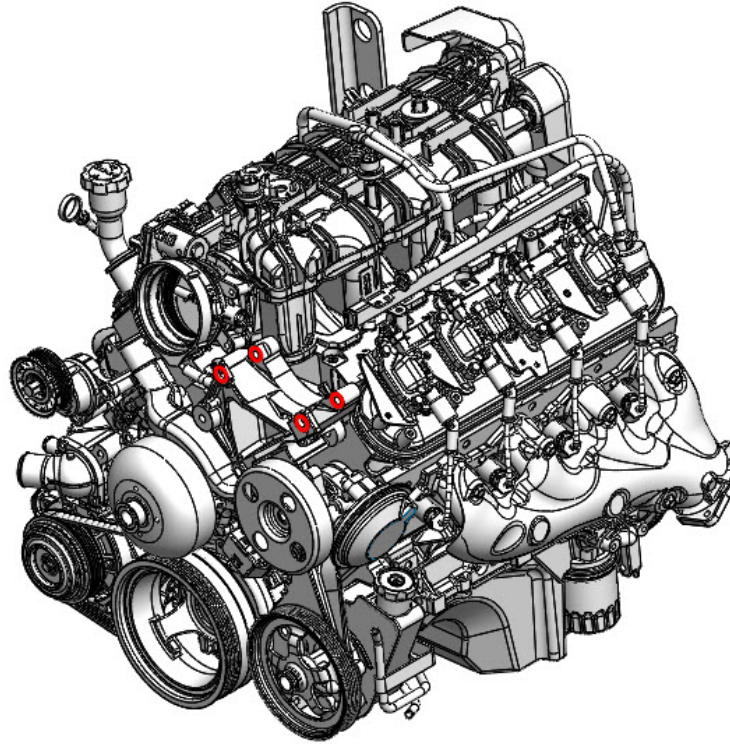


Muncie[®] Power Products

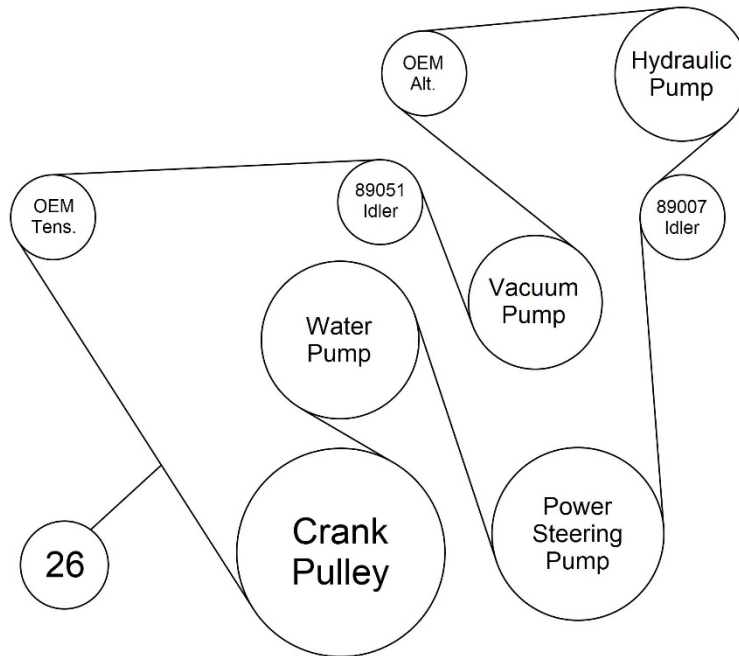
CMKI17-6000-YP6-AC

2003-2020 Isuzu N-Series
2003-2009 Chevy W3500-5500
2016-2020 Chevy LCF 3500-5500
2022-2023 Isuzu NQR / NRR
6.0L V8 Gas w/-w/o AC

Requires 6 Groove Clutch, SAE Two-Bolt 'A' Flange Pump
Recommended 1.75 in.³ or 8 gal. Pump w/ 12hp Restriction



Engine Mounting Location



Belt Routing