



**Muncie®  
Power  
Products**

**CMKM00-5900-XP8-AC**

**1999-2002**

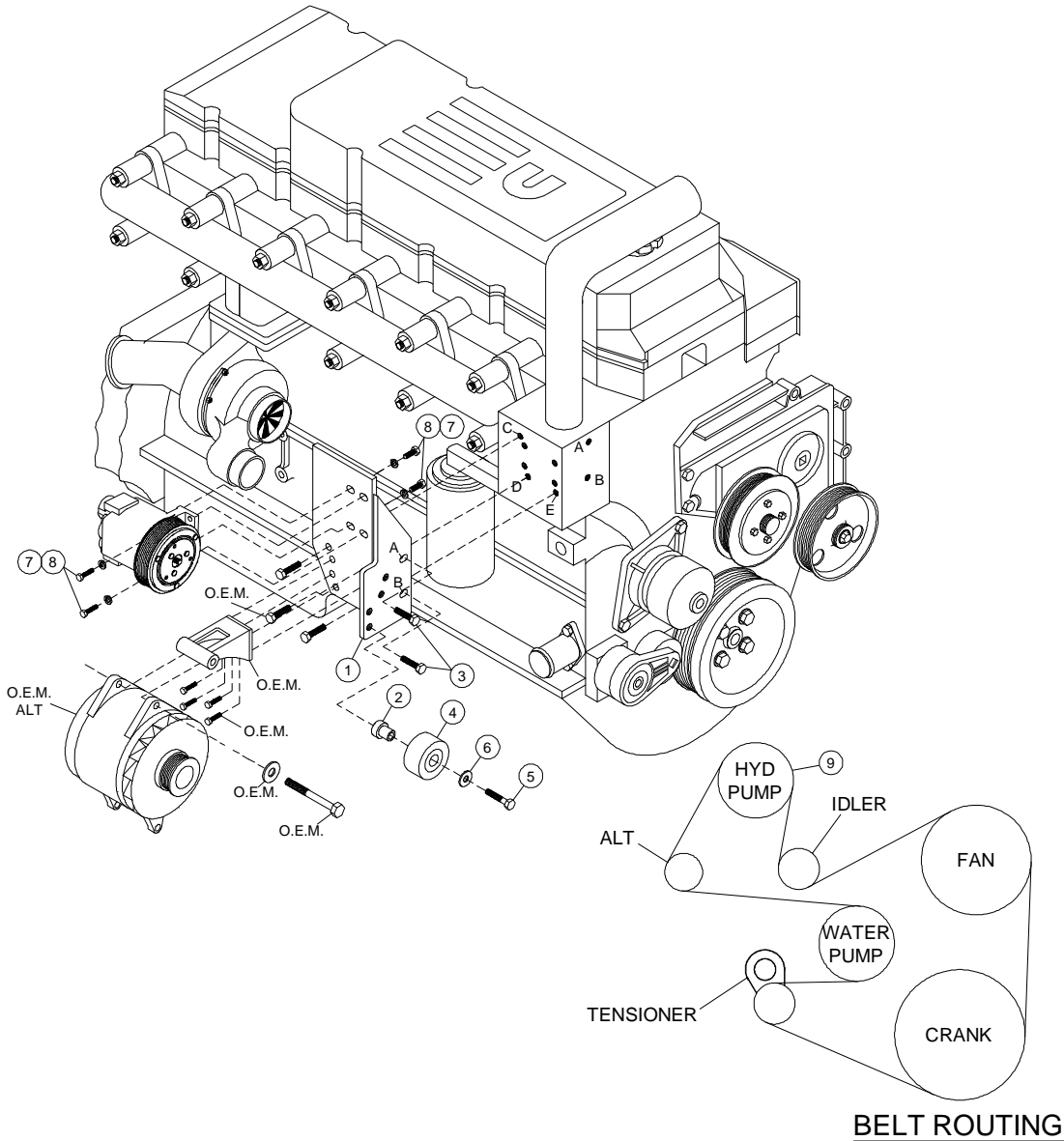
**5.9 Cummins 24 Valve**

---

## **INSTALLATION NOTES**

---

1. Disconnect the negative battery cable. Remove the serpentine belt. Loosen the top and bottom alternator bolt. Remove the upper alternator bracket and engine lifting lug. The engine lifting lug will not be reused.
2. Install the main bracket (1) onto the engine with bolts (3) on the front of the bracket, and the O.E.M. bolts through the slotted holes on the side of the bracket. Tighten bolts finger tight only at this time. Install the OEM alternator bracket reusing the OEM bolts. Tighten all bolts evenly and securely. Install the OEM upper alternator bolt and tighten.
3. Install the clutch pump using bolts (7) and lockwashers (8). Align clutch with O.E.M. drive pulleys and tighten securely. Install the new serpentine belt (9) according to the belt diagram. Load the tensioner and install the idler (4) into the lowest possible hole using bushing (2), bolt (5) and flatwasher (6). Release the belt tensioner.
4. Reconnect the battery. Run the engine and check for proper belt tracking and alignment.



## PARTS LIST

- 1. FLMP791-I8 (1)
- 2. FLMB 791 (1)
- 3. 8mm x 30mm Flange (2)
- 4. IPCD 3.0 (1)
- 5. 12mm x 55mm Bolt (1)

- 6. 12mm Flatwasher (1)
- 7. 3/8 x 1-1/4 Bolt (4)
- 8. 3/8 Lockwasher (4)
- 9. Dayco 5080895 (1)