



Muncie®
Power
Products

CMKM04-9004-YP8
2004-05 Freightliner
M2 Business Class
906 & 926 Mercedes-Benz 6 cyl
W/OAC

INSTALLATION NOTES

1. Disconnect battery cables. Remove the alternator.
2. Install pump bracket (1) with bolts (2) and lockwasher (3) onto the OEM alternator bracket.
Note: If installing on 2005 and later truck, the O.E.M. alternator may need trimmed for clearance. Also, the vent tube may need reformed for alternator clearance. Tighten bolts to 41 ft. lbs. (55 Nm). Install the alternator and brace (4) onto the bracket (1) as shown in illustration reusing the OEM bolts and washers. Do not tighten bolts. Install bolt (5) and lockwasher (3) into brace (4). Tighten bolt (5) to 41 ft. lbs. (55 Nm). Tighten all bolts evenly and securely. Install idler (6) with bushing (7), lockwasher (3), and bolt (8).
3. Install pump with bolts (9), flatwashers (10), lockwashers (11), and nuts (12). Tighten bolts to 35 ft. lbs. (47 Nm). Install coil adapter plate (15) onto bracket (1) using bolts (16). Tighten bolts to 9 ft. lbs. (12 Nm). Install coil and clutch per manufacturer's instructions. Install belt (13) according to belt diagram. Connect battery cables. Run the engine and check for proper belt tracking. Check all hoses, wires, etc., that may have been disturbed during installation to make sure they do not come in contact with any hot or moving parts.

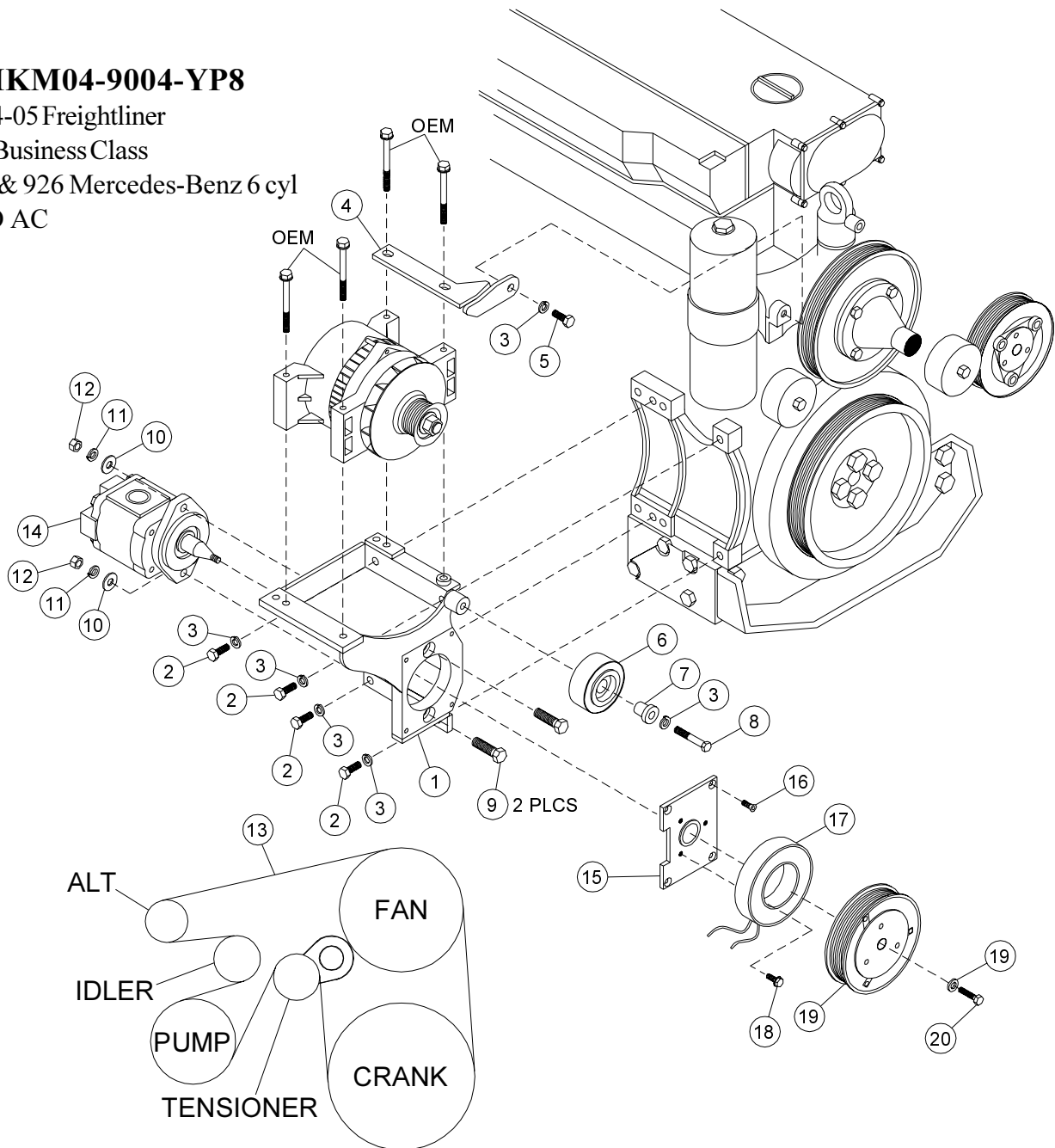
CMKM04-9004-YP8

2004-05 Freightliner

M2 Business Class

906 & 926 Mercedes-Benz 6 cyl

W/O AC



BELT ROUTING

PARTSLIST

- | | |
|---------------------------------------|---|
| 1. FLMP 61A (1) | 13. 5080855 Dayco Belt (1) |
| 2. 10mm x 30mm (2) | 14. Clutch Pump (sold separately) |
| 3. 10mm LW (6) | 15. MCA01 Clutch Mtg. Plate (1) |
| 4. FLMB 611 (1) | 16. 1/4 x 3/4 NC FHSCS (4) |
| *FLMB 612 (1) (use on 2005 and later) | 17. Coil (sold separately) (1) |
| 5. 10mm x 25mm (1) | 18. Cap Screw - 19T34530 (3) (T=8-10ft./lbs.) |
| 6. TIPCS (1) | 19. Clutch (sold separately) (1) |
| 7. CMB 3867 (1) | 20. Flat Washer - 21MZ3487 (1) |
| 8. 10mm x 35mm (1) | 21. Cap Screw - 19T38756 (1) (T=20ft./lbs.) |
| 9. 3/8 x 1-1/2 Bolt (2) | |
| 10. 3/8 FW (2) | |
| 11. 3/8 LW (2) | |
| 12. 3/8 Nut | |