



**Muncie®
Power
Products**

CMKN03-3650-P8-AC

2003-2007 International 4200 Series

2004-2007 Ford F650 & F750

VT 365, 6.0 L Diesel

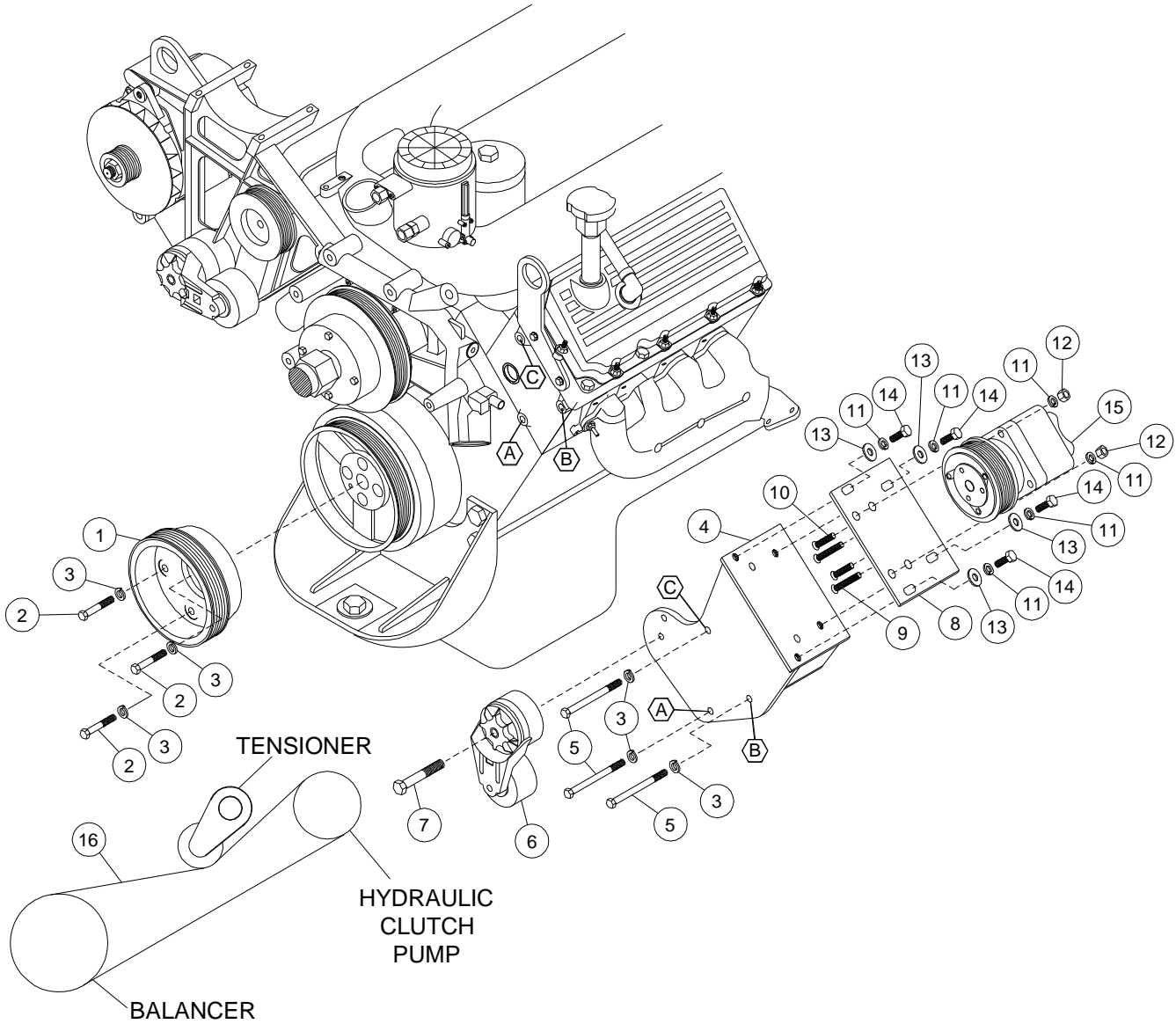
W-W/O AC, W/O Air Brakes

INSTALLATION NOTES

1. Install drive pulley (1) onto harmonic balancer using bolts (2) and lockwashers (3). Torque bolts to 40 ft.lbs..
2. Install bracket (4) on the front of the driver side head at locations "A", "B", and "C" with bolts (5) and lockwashers (3). Torque bolts to 40 ft.lbs..
3. Install clutch pump (15) onto plate (8) with countersunk bolts (9) and (10), lockwashers (11), and nuts (12). Install pump and plate onto pump bracket using bolts (14), lockwashers (11), and flatwashers (13). Do not tighten. Install coil and clutch as per manufacturer's instructions. Align the clutch pulley with the drive pulley and tighten bolts securely. Install tensioner (6) with bolt (7). Install belt (16) as shown in diagram.
4. Run engine and check for proper belt tracking and clearances. Adjust if necessary.

NOTE: Check all engine compartment hoses and electrical wiring that may have been disturbed or rerouted during kit installation to be sure that hoses are not kinked, that they do not touch any high temperature items, and that they do not interfere with any linkage components.

CMKN03-3650-P8-AC
2003-2007 International 4200 Series
2004-2007 Ford F650 & F750
VT 365, 6.0 L Diesel
W-W/O AC W/O Air Brakes



BELT ROUTING

PARTSLIST

- | | |
|-------------------------|---|
| 1. FPC 688 (1) | 9. 3/8 x 1 3/4 FHCS (2) |
| 2. 10mm x 30mm (3) | 10. 3/8 x 1 FHCS (2) |
| 3. 10mm LW (6) | 11. 3/8 LW (6) |
| 4. IMB 631 (1) | 12. 3/8 Nut NC (2) |
| 5. 10mm x 150mm (3) | 13. 3/8 FW (4) |
| 6. Tensioner 89200B (1) | 14. 3/8 x 1 NC (4) |
| 7. 10mm x 75mm (1) | 15. Clutch Pump Assembly (<i>Sold Separately</i>) |
| 8. IMP 631 (1) | 16. Belt; Dayco 5080650 (1) |