



**Muncie®
Power
Products**

CMKN03-3650-YP8

2003-2007 International 4200 Series

2004-2007 Ford F650 & F750

VT 365, 6.0L Diesel

W/O AC, W-W/O Air Brakes

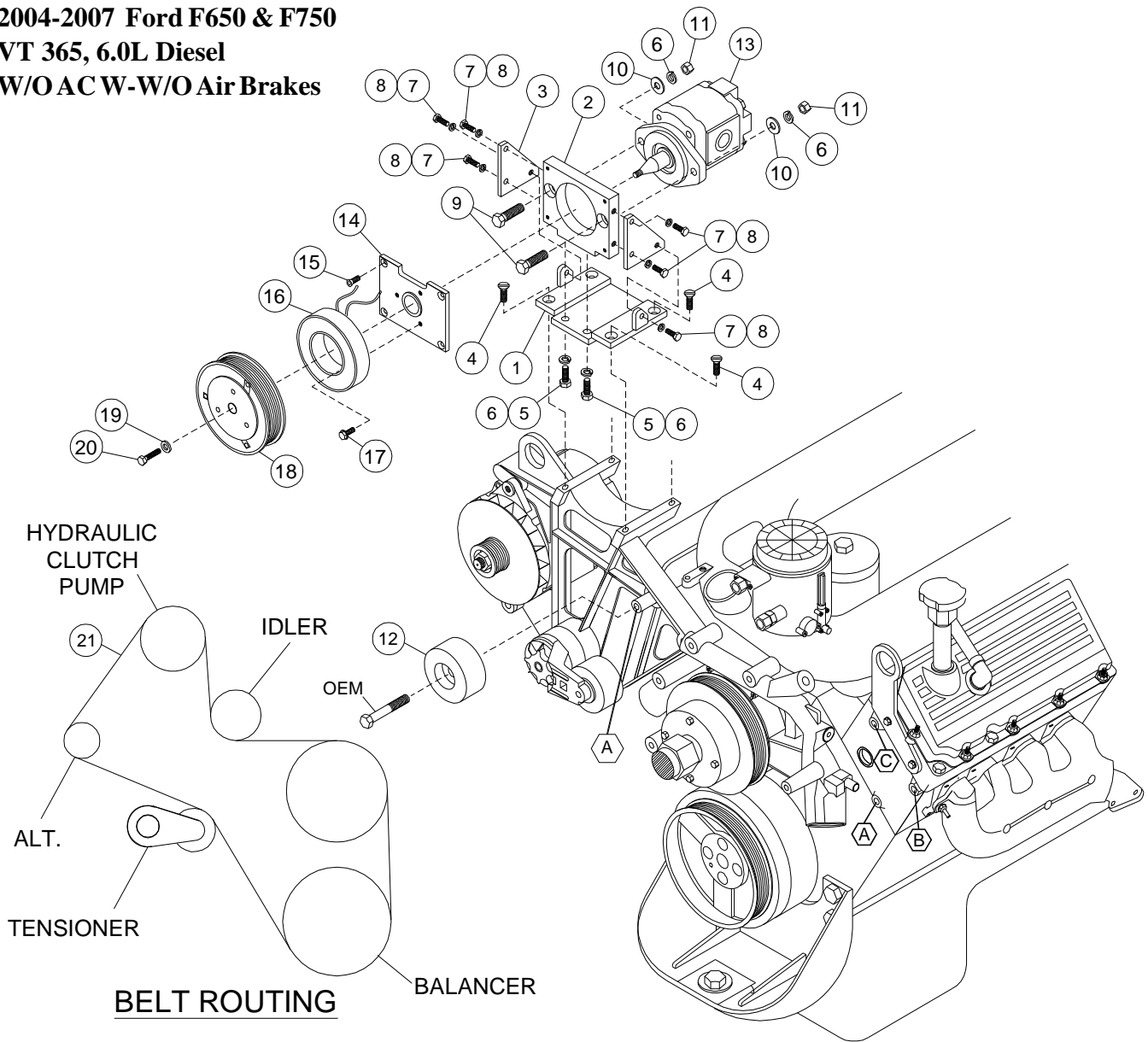
INSTALLATION NOTES

1. If equipped with an air compressor, remove the air compressor belt. Remove the accessory drive belt. Remove the grooved idler at location "A" and replace it with the flat idler (12), reusing the OEM idler hardware. Install mounting plate (1) with bolts (4) and tighten securely. Install A-mount adapter plate (2) to mounting plate (1) with bolts (5) and lockwashers (6). Do Not Tighten.
2. Install the clutch pump with bolts (9), flatwashers (10), lockwashers (6), and nuts (11). Tighten securely. Install the coil adapter plate (14) with bolts (15). Install the coil and clutch per manufacturer's instructions. Using a straight edge, make certain the clutch pulley is parallel with the OEM pulleys, then tighten bolts (5) securely. Install both gussets (3) using bolts (7) and lockwashers (8), then tighten bolts securely.
3. Install the new belt (21) onto the engine according to the belt diagram. If equipped with air compressor, install the air compressor belt. Check for clearances on all moving parts.

NOTE: Check all engine compartment hoses and electrical wiring that may have been disturbed or rerouted during kit installation to be sure that hoses are not kinked, that they do not touch any high temperature items, and that they do not interfere with any linkage components.

NOTE: Recommended no larger than 1.75 CID pump or 15 HP.

CMKN03-3650-YP8
2003-2007 International 4200 Series
2004-2007 Ford F650 & F750
VT 365, 6.0L Diesel
W/O AC W-W/O Air Brakes



PARTSLIST

- | | |
|-------------------------|---|
| 1. IMP 63AI8 (1) | 12. IPCD Idler (1) |
| 2. PBL2M (1) | 13. Clutch Pump Assembly
(Sold Separately) |
| 3. IMB63I81 (2) | 14. MCA01 plate |
| 4. 8mm x 50mm FHSCS (4) | 15. 1/4 x 3/4 NC FHSCS (4) |
| 5. 3/8 x 1 Bolt (2) | 16. Coil (Sold Separately) |
| 6. 3/8 LW (4) | 17. Capscrew-19T34530 (3) (T=8-10 ft/lbs) |
| 7. 1/4 x 3/4 Bolt (6) | 18. Clutch (Sold Separately) |
| 8. 1/4 LW (6) | 19. Flat Washer-21MZ3487 (1) |
| 9. 3/8 x 1-1/2 Bolt (2) | 20. Capscrew-19T38756 (1) (T= 20 ft/lbs) |
| 10. 3/8 FW (2) | 21. Belt; Dayco 5080855 (1) |
| 11. 3/8 Nut (2) | |