



**Muncie®
Power**

CMKN08-460M-P8-AC
2008-2010 International 4300-4400
Durastar Max Force 245 HP, W-W/O AC
W/O Air Operated Fan Clutch

INSTALLATION NOTES

1. Remove the fan from the fan pulley (***THE FAN NUT HAS LEFT HAND THREADS***) and leave it inside the fan shroud, be careful not to damage the radiator. Loosen the six pulley bolts. Release the tension on the belt and remove the belt. Remove the fan bolts and install the drive pulley (1) with bolts (2). Torque the bolts to 28 ft. lbs. Reinstall the O.E.M. belt.
2. Remove the two bolts holding the power steering reservoir to its bracket. Remove the straps holding the hoses or wires to the P/S support bracket, then remove the bracket from the frame. Support the reservoir so fluid doesn't leak from it. Remove the nuts from the bolts at locations A,B,C, & D. Install coupler nut(3) onto the bolt at location A and torque to 25 ft. lbs. Install stud (4) into coupler nut (3). Install the pump(14) onto bracket (7) with bolts provided. (Do Not Tighten). Install pump and bracket assembly onto the engine with bolts (5) at locations B,C and D. Tighten nuts evenly while supporting the pump then torque to 25 ft. lbs. Align the pump then tighten bolts securely.
3. Install tensioner (7) with bolt (8). Install idler (9) with bushing (10), flat washer (11) and bolt (12). Install the pump drive belt (13) according to the belt diagram. Replace the fan.
4. Loosen the clamps on both ends of the charge air tube and rotate the tube inward to gain clearance to the P/S reservoir. Rotate the P/S reservoir counter clockwise in its clamp holder and mount it to bracket (6) into the slotted holes with the O.E.M. bolts. The nipple on the reservoir should align with one of the holes in the clamp. Adjust the reservoir so that the hose coming out of the bottom does not make contact with the clutch pump then tighten the bolts. Once the reservoir is secure, adjust the charge air tube and tighten the clamps securely.
5. Secure all hoses and wires that may have been disturbed during installation. Check for proper clearances to any hot or moving parts. Run the engine and check for proper belt tracking, adjust it necessary.

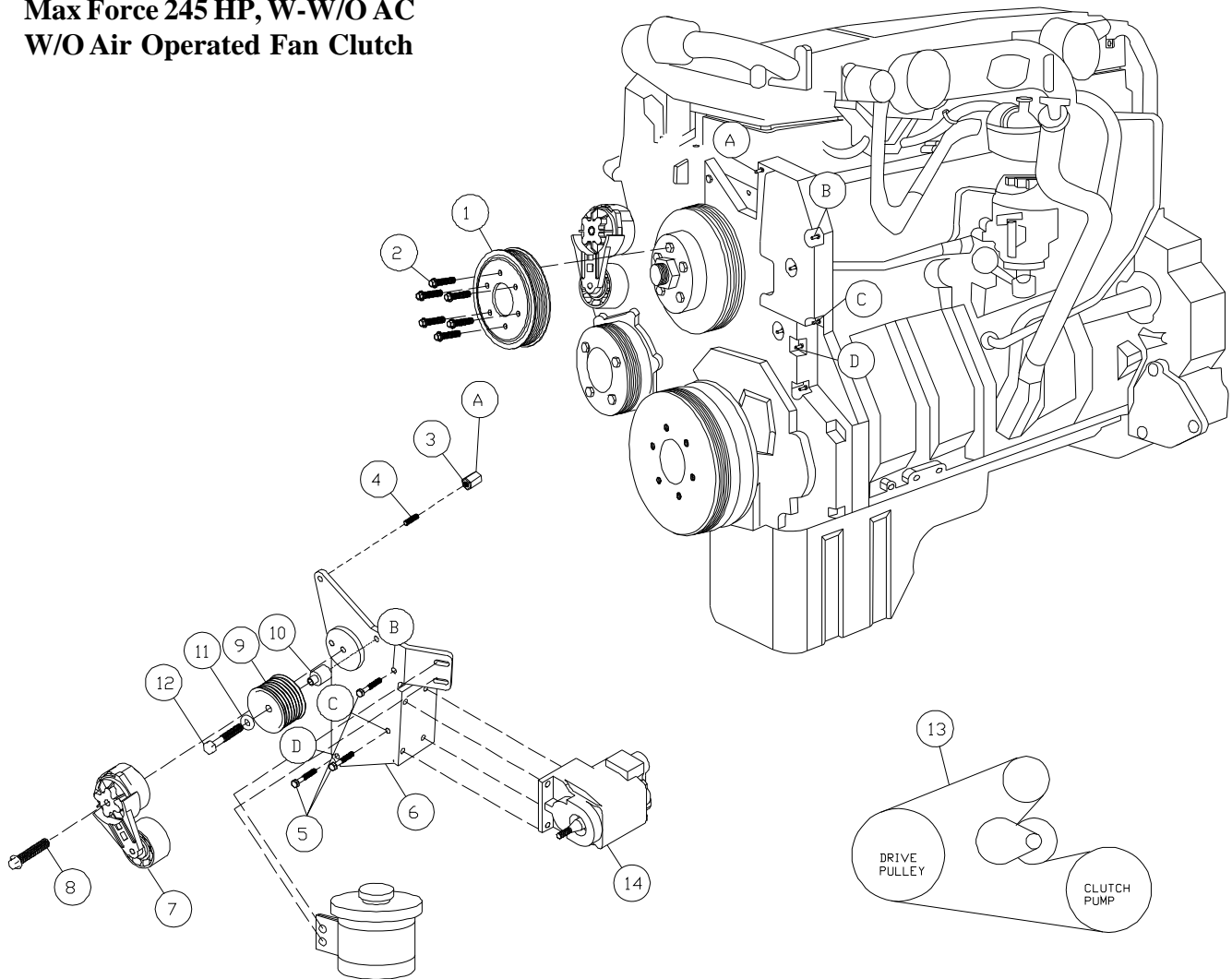
CMKN08-460M-P8-AC

2008-2010 International 4300-4400

Durastar

Max Force 245 HP, W-W/O AC

W/O Air Operated Fan Clutch



PARTS LIST

- | | |
|--------------------------------|-----------------------------------|
| 1. IPC468 (1) | 8. 10mm x 80mm Flanged Bolt (1) |
| 2. 8mm x 30mm Flanged Bolt (6) | 9. GPCD8 (1) |
| 3. 8mm x 1.03 Coupler Nut (1) | 10. IMB 530 (1) |
| 4. 8mm x 30mm Stud (1) | 11. 12mm FW (1) |
| 5. 8mm x 90mm Flange (3) | 12. 12mm x 65mm Bolt (1) |
| 6. IMP531 (1) | 13. 5080630 Dayco Belt (1) |
| 7. 89438-016(1) | 14. Clutch Pump (Sold Separately) |