



**Muncie®
Power
Products**

CMKP03-3126-P8-AC

2003-2008 Peterbuilt

3126, C7 CAT Diesel

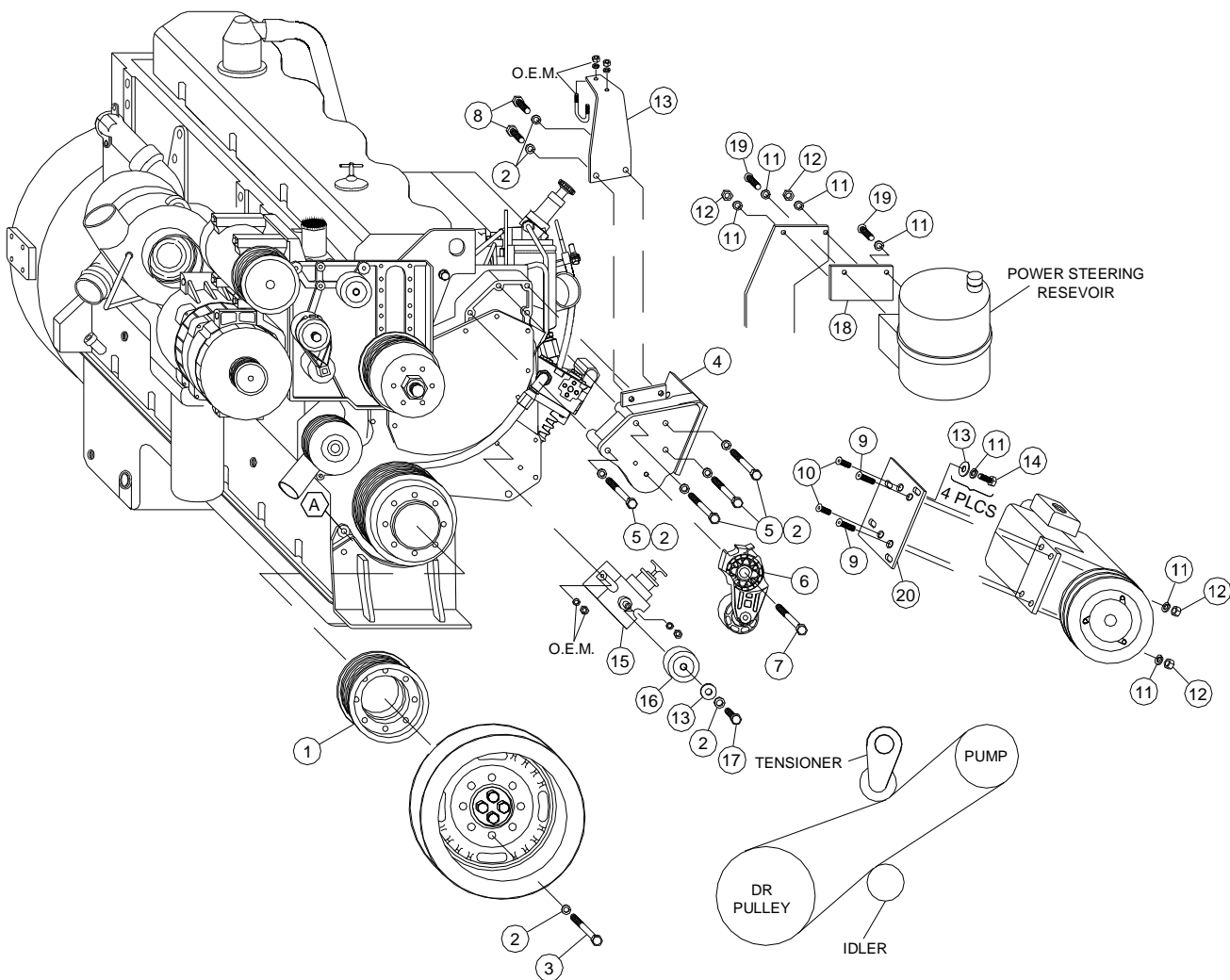
W-W/OAC

INSTALLATION NOTES

1. Remove the eight bolts holding the damper onto the crankshaft. Install pulley (1) between the damper and the O.E.M. pulley using bolts (3) and lockwashers (2). Torque bolts to 40 ft.lbs..
2. Remove bolts from power steering reservoir. Bolt reservoir onto new mounting plate (18) with bolts (19), lockwashers (11), and nuts (12). Bolt plate back onto mounting bracket by placing studs back through O.E.M. bracket holes using lockwashers (11) and nuts (12).
3. Remove radiator hose support bracket. Install pump bracket (4) with bolts (5) and lockwashers (2). Install radiator hose support bracket onto pump bracket (4) with bolts (8) and lockwashers (2). If vehicle is equipped with air brakes a fitting (22) is supplied to rerout pop-off valve for hose clearance.
4. Install pump onto plate (20) with bolts (9,10), lockwashers (11) and nuts (12). Install pump and plate assembly onto bracket (4) with bolts (14), flatwashers (13), and lockwashers (11). Align pump with the drive pulley. Tighten bolts securely. Install tensioner (6) with bolt (7).
5. Remove oil fill tube and replace with new oil fill (15) with O.E.M. nuts and lockwashers. Install idler (16) with bolt (17), lockwasher (2), and flatwasher (13). Install belt (23) according to belt diagram. Check for proper clearances to any moving parts. Run engine and check for proper tracking of the belt, adjust if necessary.

CMKP-03-3126-P8-AC

2003-2008 Peterbilt
3126, C7 CAT Deisel
W-W/OAC



BELT DIAGRAM

PARTSLIST

- | | |
|--------------------------|--|
| 1. FPC 938 (1) | 13. 3/8 FW (5) |
| 2. 10mm LW (15) | 14. 3/8 x 1 NC (4) |
| 3. 10mm x 65mm (8) | 15. PMB 902 Oil Fill (1) |
| 4. PMB 901 (1) | 16. TIPCS Idler (1) |
| 5. 10mm x 80mm (4) | 17. 10mm x 20mm (1) |
| 6. Tensioner 89200B (1) | 18. PMB 903 plate (1) |
| 7. 10mm x 75mm (1) | 19. 3/8 x 1 FHSCS (2) |
| 8. 10mm x 25mm (2) | 20. IMP 631 (1) |
| 9. 3/8 x 1 3/4 FHSCS (2) | 21. Clutch pump assy. (1) |
| 10. 3/8 x 1 FHSCS (2) | (Sold seperately) |
| 11. 3/8 LW (10) | 22. 5500-8 Elbow Thompkins (1) (not shown) |
| 12. 3/8 NC (4) | 23. 5080630 Dayco (1) |