



CVKF00-5400-P8(W)-AC

1997-2003 Ford Van E-150,250,350

5.4 Triton, W-WO/AC

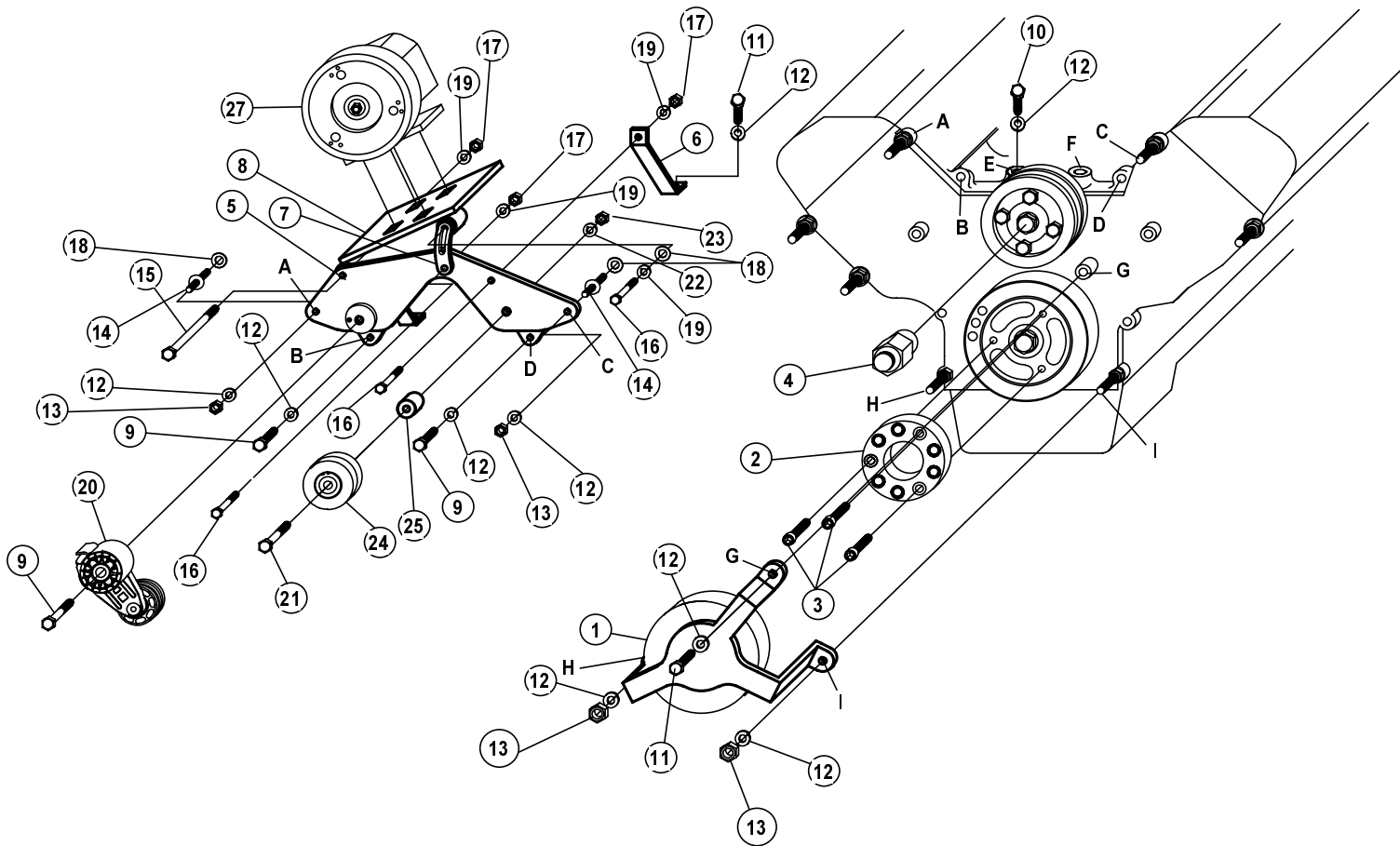
(Serpentine)

INSTALLATION NOTES

1. Disconnect the negative battery cable at the battery. Remove the complete air cleaner assembly. Remove the fan and fan shroud. (Fan nut is right handed threads). Remove the O.E.M. serpentine belt and the flat idler on the passenger side.
2. Install the cast iron water pump as per attached instructions.
3. Install crankshaft adapter (2) onto the front of the balancer with bolts (3) and torque them to 40 ft./lbs.. Install the belts onto the pulley assembly with the legs at locations "H & I" on the outside of the belts and the leg at location "G" inside the belt. If there are any clips straps etc. bolted to either of these studs, they must be removed and reinstalled on the front side of the pulley bracket. Install the pulley assembly over the studs at "H & I", make sure the drive pins slide into the six nylon bushings in the crankshaft adapter. Tighten nuts and bolt to 35 ft./lbs.. If the pulley is lined up properly, a very slight amount of backlash should be felt in the pulley.
4. Remove the studs at locations "A & C" and replace them with studs (14) with a flatwasher between the head of the stud and the timing cover. **NOTE:** The flatwashers must be used to keep the main bracket aligned. Remove the bolts at locations "B & D". Install the main bracket (5) over the studs at "A & C". It is not necessary to remove the alternator to install the bracket. Install bolts and lockwashers (9 & 12) into holes at locations "B & D". Do not tighten. Install nuts and lockwashers (12 & 13) onto the studs at locations "A & C". Do not tighten. Install bolt (10) and lockwasher (12) through the leg in the back of the main bracket at location "E". Tighten bolts at locations "B & D", then "A & C" and then the bolt at location "E". Install brace (6) with the slotted end to the bracket. Use bolt (11) and lockwasher (12) on the engine and bolt (16), lockwasher (19) and nut (17), tighten them evenly. **NOTE:** If there is an electrical relay switch on the stud at location "A", make sure it is bolted to the front side of bracket (5).
5. Install the O.E.M. idler back in its original position and tighten. Install serpentine belt.
6. Install the pump onto the pump plate (8) using the bolts provided in the kit. Do not tighten. Install the pump and plate assembly onto the main bracket (5) with bolt (15), nut (17) and lockwasher (19) through the bushing side of the plate. Install the adjusting slide with 2 bolts (16), nuts (17) and lockwashers (19) and one flatwasher (18). Install the grooved idler (24) onto bracket (5) using bushing (25), bolt (21), nut (23) and lockwashers (22). Install tensioner (20) to the main bracket with bolt (9). Align the pump with the drive pulley. Tighten the pump to plate (8). Install the serpentine belt. The pump plate can be adjusted up and down to center the tensioner arm.
7. Install fan spacer (4) on the water pump. Install the fan and fan shroud. Replace air cleaner assembly and connect negative battery cable. Check all hoses, wires, etc. to make sure that they do not make contact with any moving parts.

CVKF00-5400-P8(W)-AC
 1997-2003 Ford Van E-150,250,350
 5.4 Triton, W-WO/AC

2000-03 MODELS must reroute heater hose at front of intake manifold for pump clearance.
 (See attached bulletin).



PARTS LIST

FPC 378 ASSEMBLY (1-3)

- 1. FPC 378 (1)
- 2. FPA 37 (1)
- 3. 10mm x 20mm 1.5 SHCS w/Locktite (3)
- 4. FSK 5468 (1)
- 5. VFB 380-8 (1)
- 6. VFB 361 (1)
- 7. VFB 362 (1)
- 8. VFP 381 (1)
- 9. 10mm x 60mm 1.5 (3)
- 10. 10mm x 30mm 1.5 (1)
- 11. 10mm x 25mm 1.5 (2)
- 12. 10mm LW (9)
- 13. 10mm 1.5 Nut (4)
- 14. 10107 1.5 ST (2)
- 15. 3/8 x 4 NC (1)
- 16. 3/8 X 1-1/4 NC (3)
- 17. 3/8 NC (3)

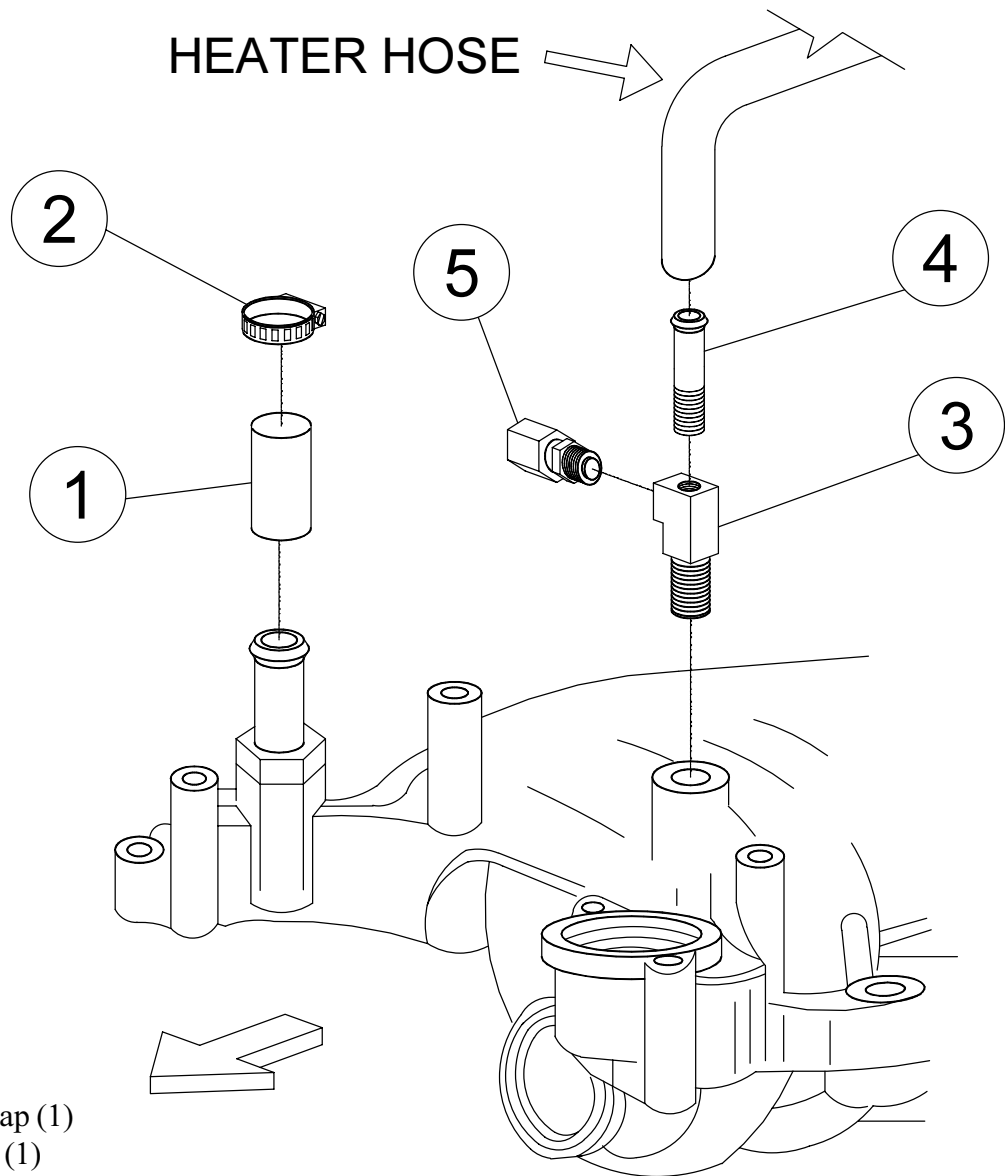
- 18. 3/8 FW (3)
 - 19. 3/8 LW (4)
 - 20. DAYCO 89231-007 (1)
- GPKD-38-8M Idler Assembly (items 21-25)

- 21. 17mm x 3-1/2 NC (#19M63260) (1)
- 22. 5/8 LW (1)
- 23. 5/8 NC Nut (1)
- 24. GPCD-8 (1)
- 25. SP125-1.625 (1)
- 26. Belt (Not Shown) (1)
 Dayco 5080663
- 27. Clutch Pump Assembly (Sold Separately)
- 28. Water Pump #49T38089 (Not Shown) (1)

2000-02 5.4L & 6.8L E Series Van

***CVKF00-5400-A(W)-AC, CVKF00-5400-P8(W)-AC,
CVKF00-6800-A-AC & CVKF00-6800-P8-AC KITS***

It is necessary to reroute the heater hose located at the front of the engine to provide enough room to mount the hydraulic pump. Drain the antifreeze. Remove the heater hose on the passenger side of the intake. Install the hose cap (1) onto the nipple and secure it with the hose clamp (2) provided in the kit. Remove the sending unit from the intake and install the tee (3) and hose nipple (4). (in most applications, placing the nipple at the top of the tee provides the most clearance). Use thread sealant. Reroute the heater hose so it will reach. Install the sending unit (5) into the tee. Replace the antifreeze and check for leaks.

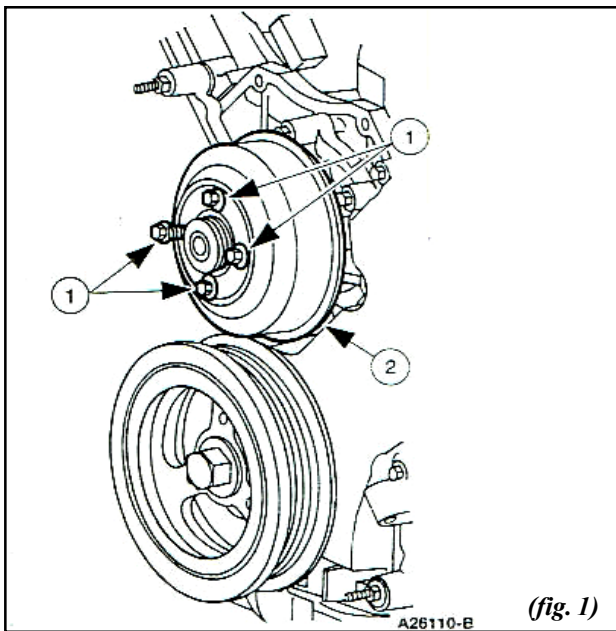


1. 3/4" Hose Cap (1)
2. Hose Clamp (1)
3. Tee Fitting (1)
4. Hose Nipple (1)
5. O.E.M. Sending Unit (1)

REPLACE WATER PUMP 5.4 TRITON

Removal

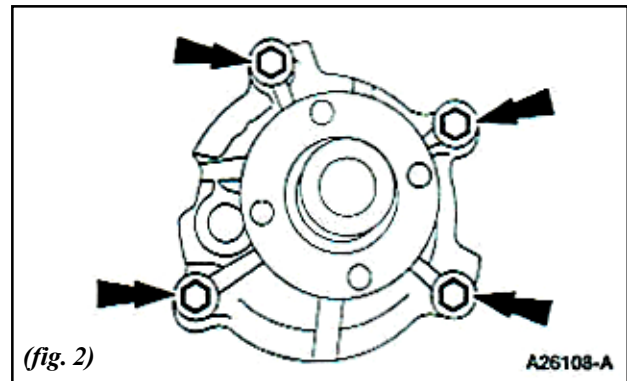
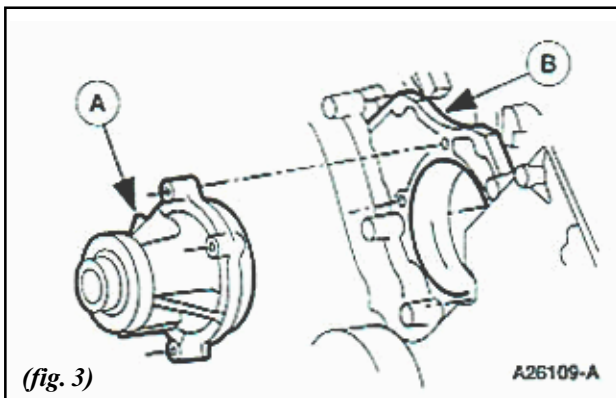
CAUTION! Do not mix Standard (green) Coolant with Extended Life Coolant (orange). If this contamination occurs the service change interval on Extended life Coolant will be reduced from 6 year/150,000 miles to 3 years / 30,000 miles.



1. Drain the cooling system.
2. Remove water pump pulley (*fig. 1*).
 1. Remove the bolts.
 2. Remove the water pump pulley.

3. Remove the four water pump bolts (*fig. 2*).
4. Remove the water pump (A) from the cylinder block (B).

-Clean and inspect the mating surfaces (*fig. 3*)



CAUTION! Do not rotate the water pump housing once installed on the engine. Damage to the O-ring can occur, causing the water pump to leak.

5. Lubricate the new O-ring seal. Ford recommends using PremiumCooling System Fluid E2FZ-19549-AA in Oregon F5FZ-19549-CC; in Canada CXC-8-B or equivalent meeting Ford specification ESE-M97B44-A or Ford Extended Life Engine Coolant F6AZ-19544-AA; Dex-Cool or equivalent meeting Ford specification ESE-M97B44-D, and install the O-ring seal onto the water pump.

6. Position the water pump into the engine block.
7. Install the Bolts. Torque in staggered sequence to 15-22 lb/ft.
8. Install water pump pulley.

