



**Muncie<sup>®</sup>  
Power  
Products**

**CVKF00-6800-A-AC**

**1997-2003 Ford Van E-150,250,350**

**6.8 Triton, W-WO/AC**

---

## INSTALLATION NOTES

---

1. Disconnect the negative battery cable at the battery. Remove the complete air cleaner assembly. Remove the fan and fan shroud. (Fan nut is right handed threads). Remove the O.E.M. serpentine belt and the flat idler on the passenger side.
2. Install crankshaft adapter (2) onto the front of the balancer with bolts (3) and torque them to 40 ft./lbs.. Install the belts onto the pulley assembly with the legs at locations "H & I" on the outside of the belts and the leg at location "G" inside the belt. If there are any clips straps etc. bolted to either of these studs, they must be removed and reinstalled on the front side of the pulley bracket. Install the pulley assembly over the studs at "H & I", make sure the drive pins slide into the six nylon bushings in the crankshaft adapter. Tighten nuts and bolt to 35 ft./lbs.. If the pulley is ligned up properly, a very slight amount of backlash should be felt in the pulley.
3. Remove the studs at locations "A & C" and replace them with studs (14) with a flatwasher (18) between the head of the studs and the timing cover. **NOTE:** The flatwashers must be used to keep the main bracket aligned. Remove the bolts at locations "B & D". Install the main bracket (5) over the studs at "A & C". (It is not necessary to remove the alternator to install the bracket). Install bolts and lockwashers (9 & 12) into holes at locations "B & D". Do not tighten. Install lockwashers and nuts (12 & 13) onto the studs at locations "A & C". Do not tighten. Install bolt (10) and lockwasher (12) through the leg in the back of the main bracket at location "E". Tighten bolts at locations "B & D", then "A & C" and then the bolt at location "E". Install brace (6) with the slotted end to the bracket use bolt (11) and lockwasher (12) on the engine and bolt (16), lockwasher (19), and nut (17) to the bracket, tighten them evenly. **NOTE:** If there is an electrical relay switch on the stud at location "A", make sure it is bolted to the front side of bracket (5).
4. Install the O.E.M. idler back to its original position and tighten. Install serpentine belt.
5. Install the pump onto the pump plate (8) using the bolts provided in the kit. Do not tighten. Install the pump and plate assembly onto the main bracket (5) with bolt (15), nut (17) and lockwasher (19) through the bushing side of the plate. Install the adjusting slide with 2 bolts (16), nuts (17) and lockwashers (19) and one flatwasher (18). Install the grooved idler (25) onto bracket (5) using adapter (26), bolt (23), flat washer (24), lockwashers (27) and nut (28). Install idler (21) with bolt (22) and spacer (20). Align the pump with the idler and drive pulley. Tighten the pump to plate (8). Install the v-belts over the pump and idlers and tension them properly using the jackscrew. Tighten all pump plate bolts at this time.
6. Install fan spacer (4) on the water pump. Install the fan and fan shroud. Replace air cleaner assembly and connect negative battery cable. Check all hoses, wires, etc. to make sure that they do not make contact with any moving parts.

# CVKF00-6800-A-AC

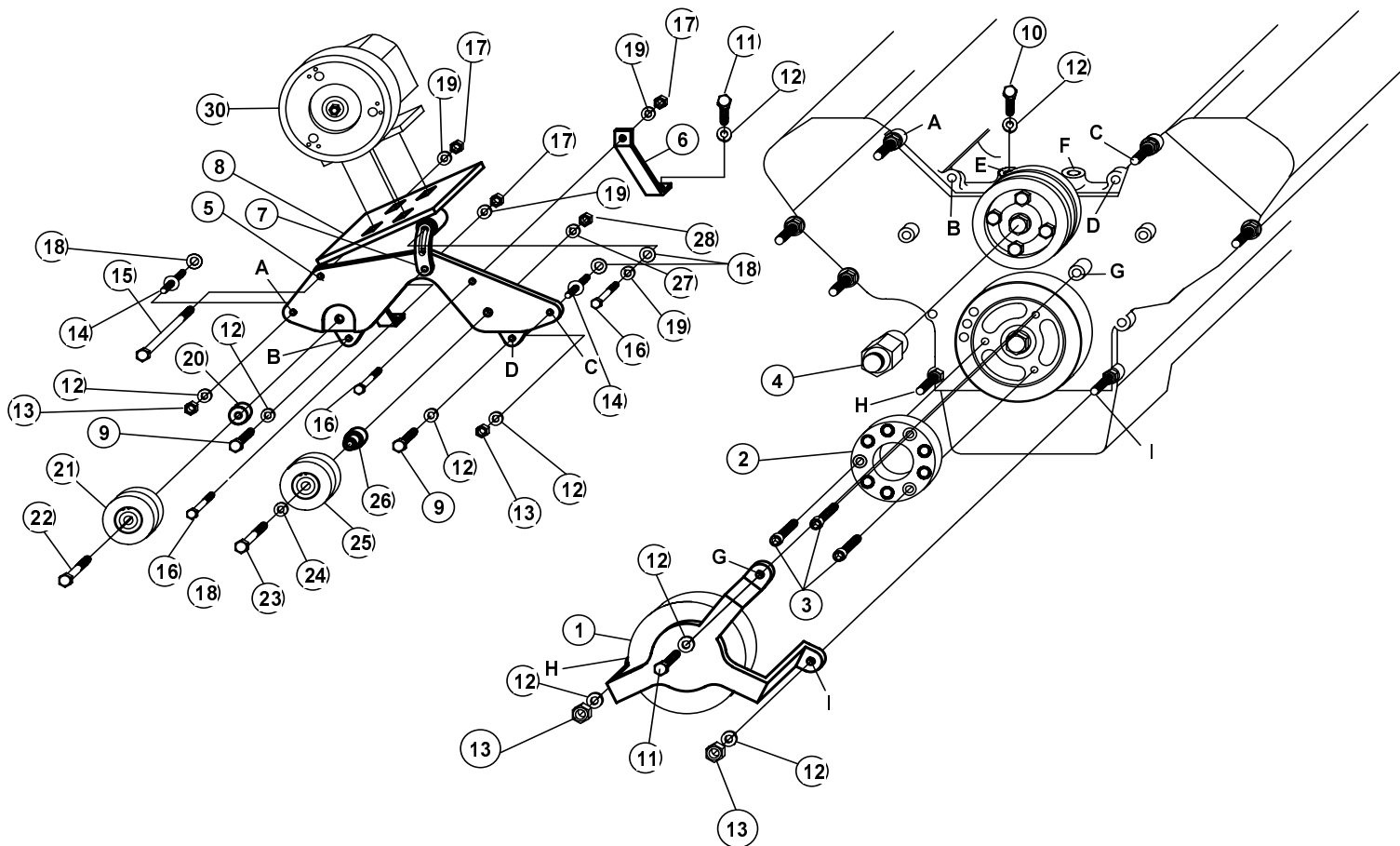
1997-2003 Ford Van E-150,250,350

6.8 Triton, W-WO/AC

**2000-03 MODELS** must reroute heater hose

at front of intake manifold for pump clearance.

(See attached bulletin).



## PARTS LIST

### FPC 452 ASSEMBLY (Items 1-3)

- 1. FPC 452 (1)
- 2. FPA 45 (1)
- 3. 10mm x 20mm 1.5 SHCS w/Locktite (3)
- 4. FSK 6.8 (1)
- 5. VFB 380 (1)
- 6. VFB 361 (1)
- 7. VFB 362 (1)
- 8. VFP 451 (1)
- 9. 10mm x 60mm 1.5 (2)
- 10. 10mm x 30mm 1.5 (1)
- 11. 10mm x 40mm 1.5 (2)
- 12. 10mm LW (9)
- 13. 10mm 1.5 Nut (4)
- 14. 10107 1.5 ST (2)
- 15. 3/8 X 4 1/2 NC (1)
- 16. 3/8 X 1 1/4 NC (3)
- 17. 3/8 NC Nut (3)
- 18. 3/8 FW (3)

- 19. 3/8 LW (4)

### IPKD-G-45M ASSEMBLY (Items 20-22)

- 20. SP 175-1.625 (1)
- 21. IPCD-G (1)
- 22. 17mm x 4 NC (#19M63310) (1)

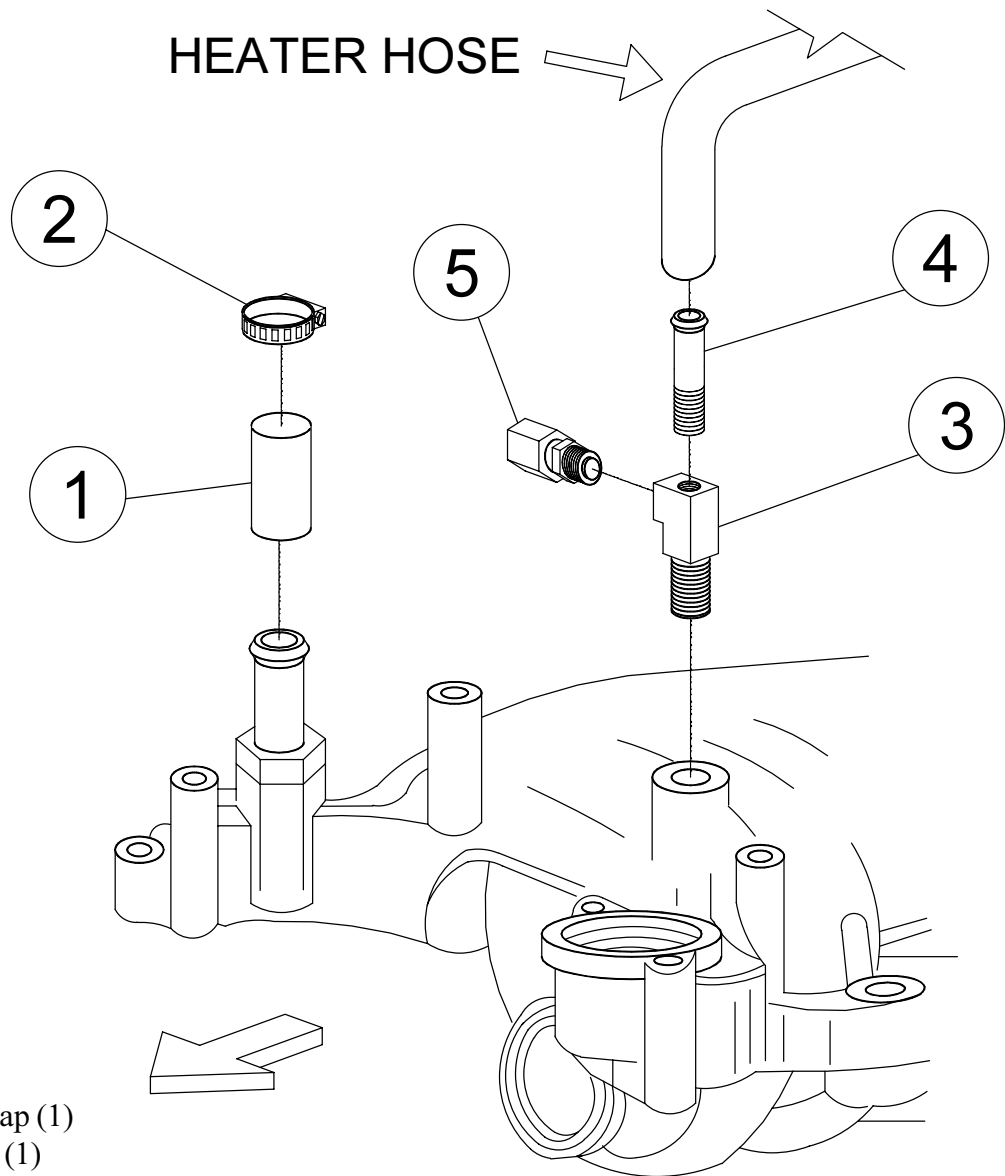
### GPKD-45M ASSEMBLY (Items 23-28)

- 23. 17mm x 4 NC (#19M63310) (1)
- 24. IPW10 Shim (1)
- 25. GPCD 73 (1)
- 26. GPSA 45 (1)
- 27. 5/8 LW (1)
- 28. 5/8 NC Nut (1)
- 29. Belts (Not Shown) (2)  
Dayco A64F
- 30. Clutch Pump Assembly (1) (Sold Separately)

## 2000-02 5.4L & 6.8L E Series Van

### *CVKF00-5400-A(W)-AC, CVKF00-5400-P8(W)-AC, CVKF00-6800-A-AC & CVKF00-6800-P8-AC KITS*

It is necessary to reroute the heater hose located at the front of the engine to provide enough room to mount the hydraulic pump. Drain the antifreeze. Remove the heater hose on the passenger side of the intake. Install the hose cap (1) onto the nipple and secure it with the hose clamp (2) provided in the kit. Remove the sending unit from the intake and install the tee (3) and hose nipple (4). (in most applications, placing the nipple at the top of the tee provides the most clearance). Use thread sealant. Reroute the heater hose so it will reach. Install the sending unit (5) into the tee. Replace the antifreeze and check for leaks.



1. 3/4" Hose Cap (1)
2. Hose Clamp (1)
3. Tee Fitting (1)
4. Hose Nipple (1)
5. O.E.M. Sending Unit (1)