



CVKM04-2700-YP6-AC

2002-06 Freightliner Van

2500 & 3500

2.7L Mercedes-Benz

INSTALLATION NOTES

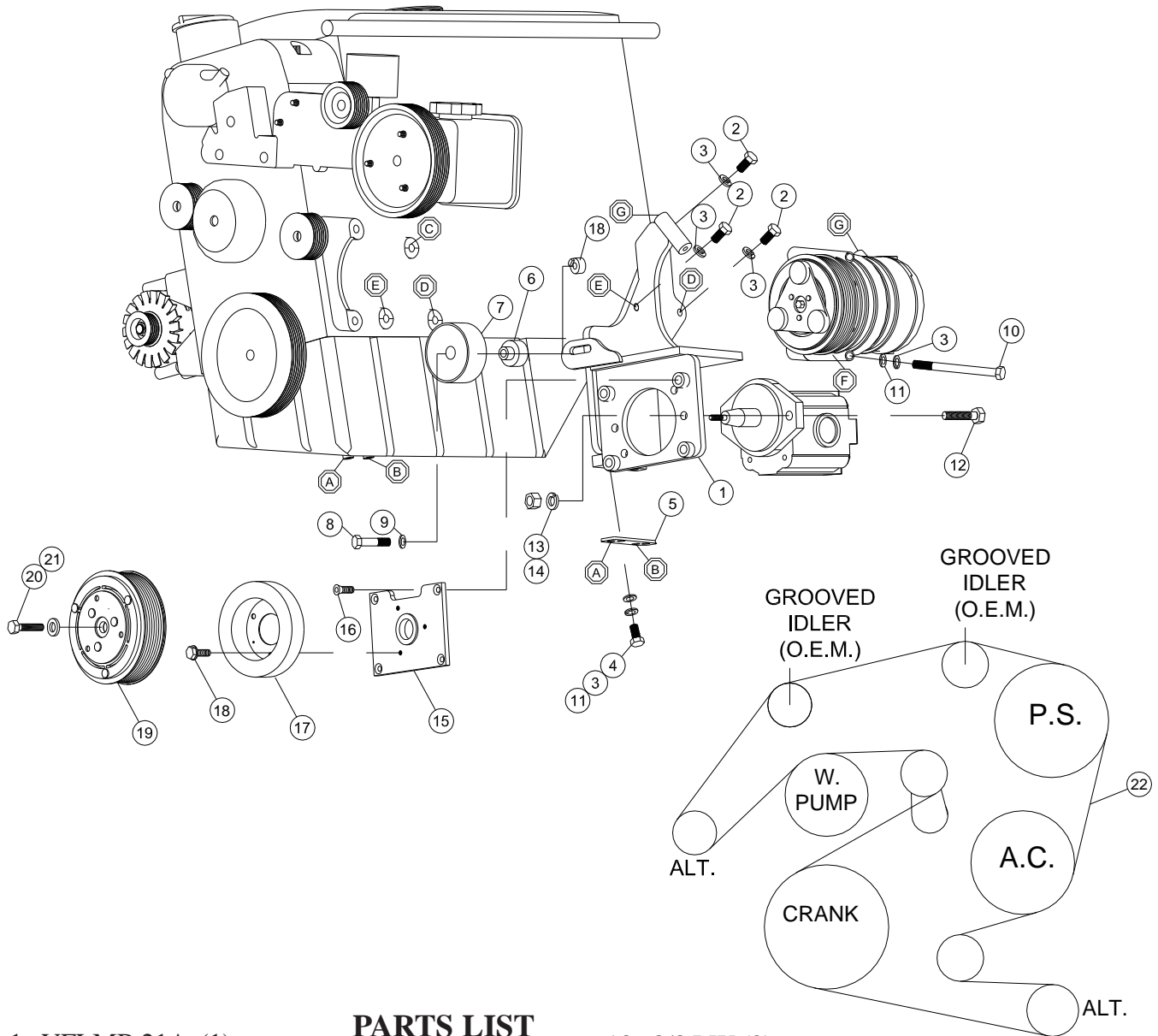
1. Disconnect negative battery cable. Remove the OEM serpentine belt. Remove the clip holding the front of transmission line to the oil pan. Replace the bolt. The transmission line will need to be bent down for belt clearance. Remove all three bolts from OEM A.C. Remove rear air conditioner mount.
2. The O.E.M. studded bracket on drivers side frame may need cut off for alternator clearance. Install bracket (1) with bolts (2) and lockwashers (3) in locations (C,D,& E). Tap locations A & B with 8mm tap. Install brace (5) with bolts (4), lockwashers (3), and flatwashers (11).
3. Install OEM A.C. back in original location using bolt (10) in location (F) and OEM hardware in other locations. Install idler (7) with bolt (8), flatwashers (9), idler spacer (6), and nut (18). Install pump with bolts (12), lockwashers (13) and nuts (14). Torque nuts to 35 ft/lbs. Install coil adapter (15) with bolts (16) and torque to 10 ft/lbs. Install coil and clutch per manufacturer instructions. Install new belt (22) according to belt diagram on back. Adjust idler (7) in slot in order to obtain max. tensioner adjustment. Connect battery cable. Run the engine and check for proper belt tracking.

CVKM04-2700-YP6-AC

2002-06 Freightliner Van

2500 & 3500

2.7L Mercedes-Benz



PARTS LIST

1. VFLMB 21A (1)
2. 8mm x 30mm (3)
3. 8mm x LW(8)
4. 8mm x 25mm (4)
5. VFLMB215 (1)
6. VFLMB211 (1)
7. 89007 Dayco (1)
8. 10 mm x 45 mm (1)
9. 3/8 FW (1)
10. 8mm X 90mm (1)
11. 8mm FW (7)
12. 3/8-16 x 1-1/2 (2)

13. 3/8 LW (2)
14. 3/8-16 Nut
15. MCA01 Cutch Mtg. Plate (1)
16. 1/4-20 x 3/4 FHSCS
17. Coil (*Sold Separately*)
18. Capscrew - 19T34530 (3)
(torque=8-10 ft/lbs.)
19. Clutch (*Sold Separately*)
20. FW - 21M23487 (1)
21. Capscrew - 19T38756 (1)
(torque=20 ft/lbs.)
22. Belt Dayco 5061150 (1)