

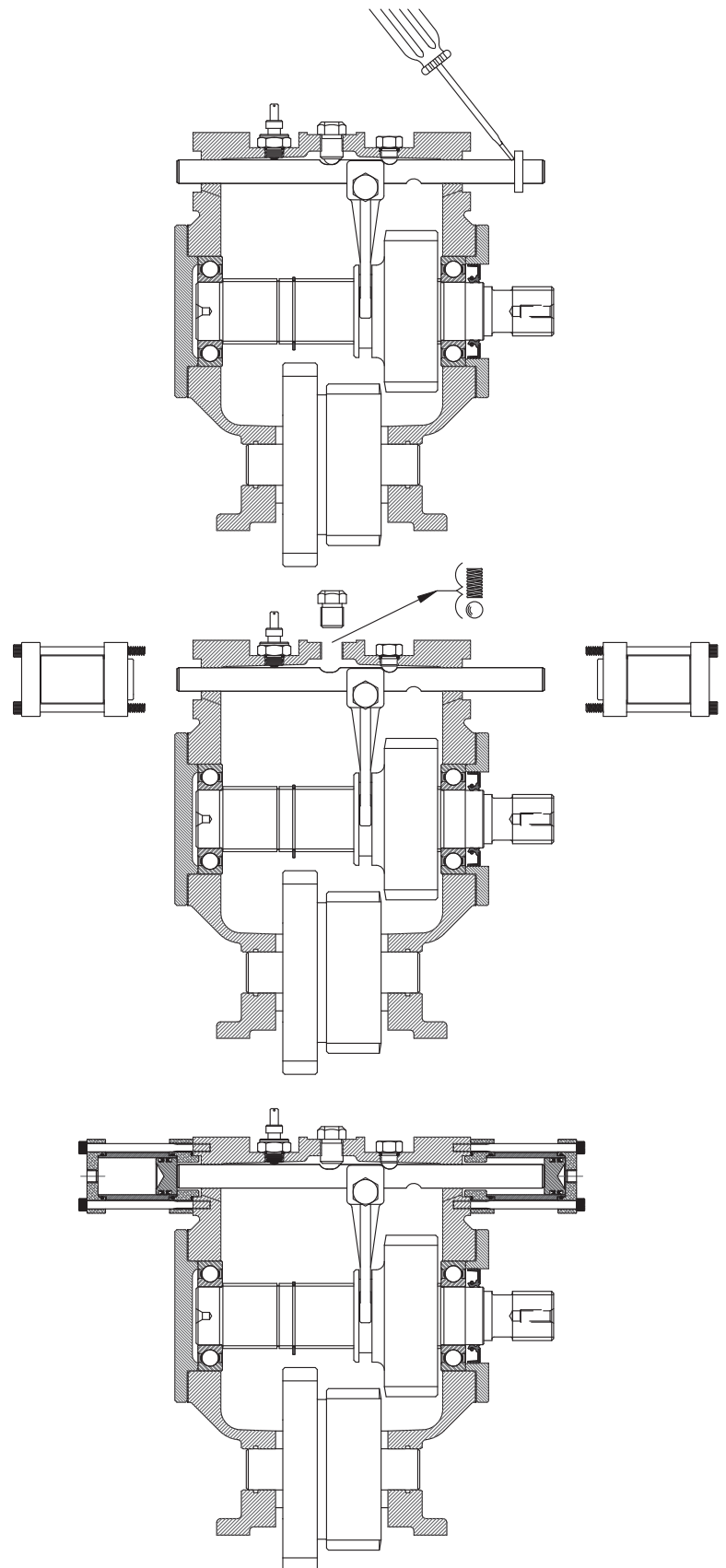


82 SERIES

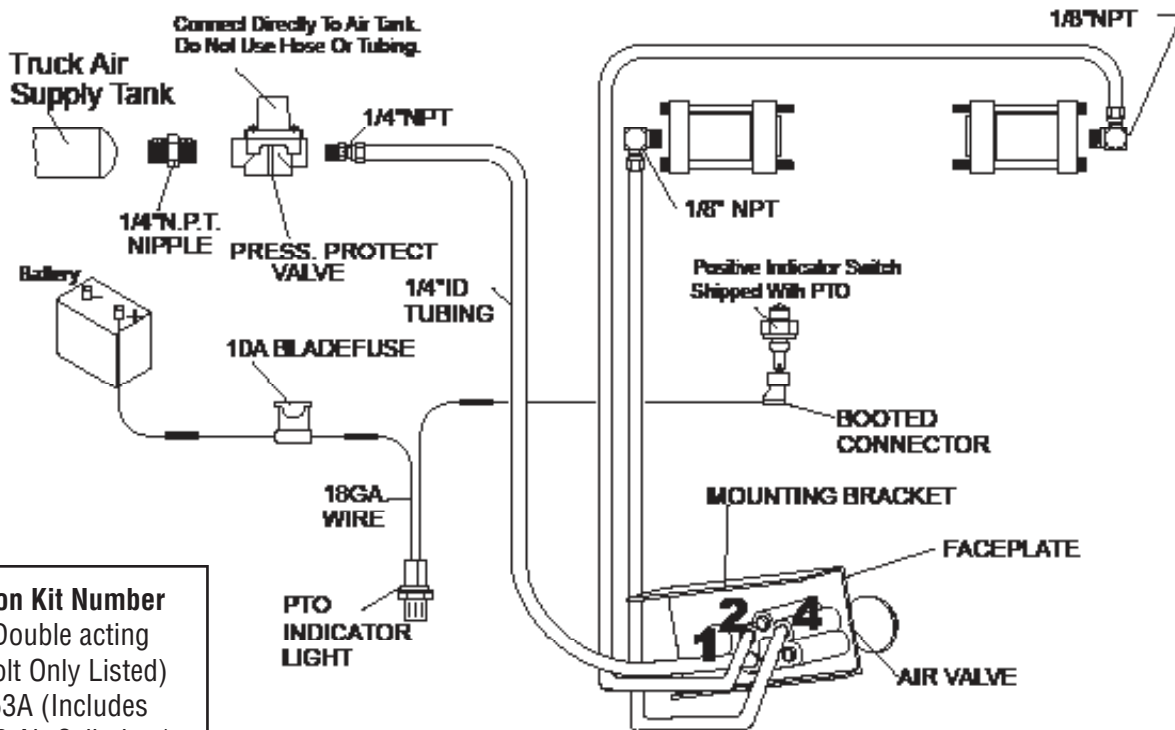
DOUBLE ACTING AIR SHIFT INSTALLATION

Installation Instructions

1. The dual cylinder, double acting air shift cylinder kit requires the 17T36454 shift rail. This rail measures approximately 11-1/4 inches and the old rail is 13 inches long. Measure the shaft on your PTO and change to the new shaft if necessary.
2. Remove any hardware attached to the PTO shift rail. Using a screw driver pry loose the shift rail shaft seal and discard. Do this to both ends.
3. Using a 3/4" wrench remove the poppet retainer and remove the detent ball and spring. These will not be reused. Reinstall the poppet retainer.
4. This shifter assembly requires that a small diameter hole be in the seal bore area for oil passage. Earlier models did not have these holes and one 1/8" dia. hole should be drilled into each seal bore.
5. Place a small amount of grease on the shift rail. Place the air cylinder over the end of the rail and slide it against the PTO housing.
6. Using a 3/16" allen wrench tighten the two socket head screws to 9 ft.lbs.
7. Do this to both ends of the shift rail.
8. Test your assembly for proper shifting with bench air pressure.



82 Series Double Acting Air Shift System



Conversion Kit Number
Lever to Double acting
Air (12 Volt Only Listed)
16MK3253A (Includes
47TK3899 Air Cylinders)

82 Series Assembly Arrangements

Relative locations of the shift rail and indicator switch compared to the output shaft & gear **C** and input gear **D** for the various 82 series arrangements.

Position the shift rail in the housing so that the position of **A** and **B** notches on the rail are in the position shown for the appropriate assembly required.

