



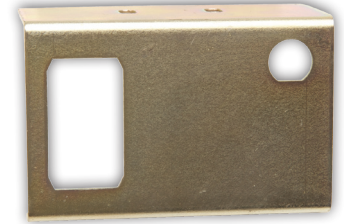
# FR66F1209G3\*X PTO Installation Kit Contents

## Kit # 43TK5392

(1) Hose Assembly  
- 45T42791



(1) Metric Straight x ORSF  
- 43T42793



(1) Dash Bracket  
- 36MA1005



(1) Step Stud  
- 30T37592



(1) Face Plate  
- 36T36271



(3) 12-Point Cap screws  
- 19T42075



(1) Whiz-Lock Nut  
- 22T37605



(1) Grommet  
- 37T35674



(1) Elbow Fitting  
- 43T42792



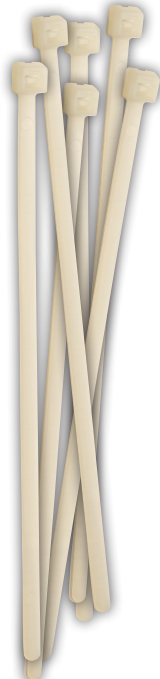
(2) Shoulder Studs  
- 20T37914



(1) Dash Bracket Bolt Kit  
- 36MK1007



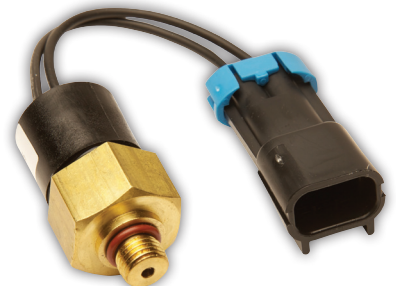
(2) Spirallock Nuts  
- 22T39282



(6) Wire Ties



(1) Rocker Switch  
- 30T35687

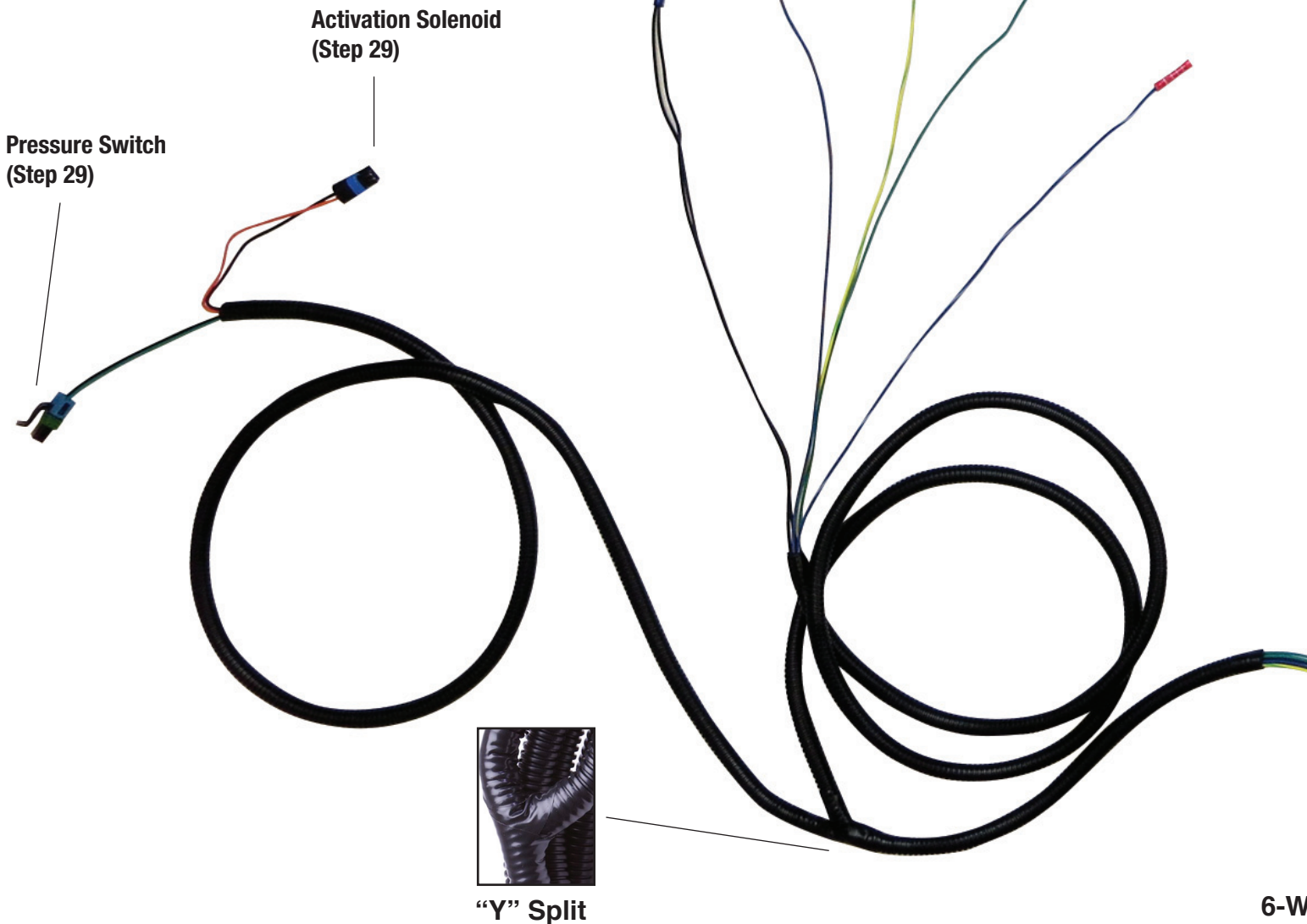


(1) Pressure Switch  
- 30T41642

# WIRE HARNESS 34T42747 FOR USE IN STATIO

MPP Harness Wire Color	Connected To	Ford Wire Color
Black with Ring	Connected To	Engine Compartment Ground
Blue/White		Blue/White (White/ Violet Early Build)
Yellow/Green		Yellow/Green (White/ Red Early Build)
Green		Green (Tan/ Orange Early Build)
Blue/Orange		Blue/Orange (Black/ Brown Early Build)

(Steps 22-26)



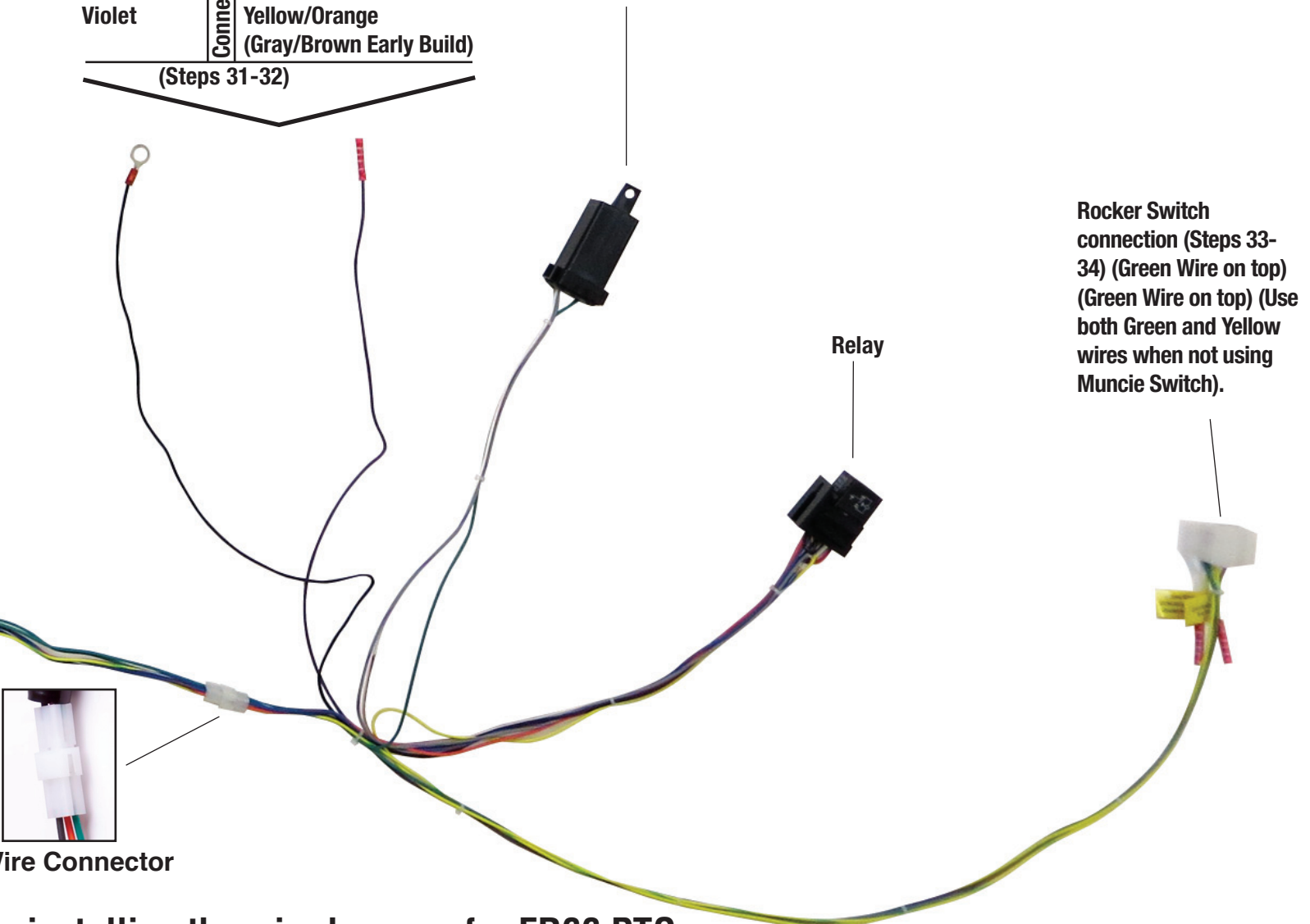
**⚠ Warning! Read all safety information before**  
 Additionally, you must have completed the installation

# STATIONARY MODE ONLY. (F650 GAS ENGINE ONLY)

MPP Harness Wire Color	Ford Wire Color
Black with Ring	In-Cab Ground
Violet	Yellow/Orange (Gray/Brown Early Build)

(Steps 31-32)

Potentiometer  
(Stationary Mode Only)  
Turn Clockwise to Increase RPM  
Note: The adjustment screw will increase the set RPM of the engine from the pre-set 900 RPM. Speeds below 900 RPM are not recommended.



Be installing the wire harness for FR66 PTO.  
n of the FR66 PTO prior to installing the wire harness.

19. (From step 19, page 10 of Installation/Owners Manual)

20. Separate the wire harness at the 6-Wire connector. The engine compartment portion of the wire harness has (7) connections: the battery ground, activation solenoid, pressure switch, and (4) blunt cut wires.

21. Locate the Ford supplied blunt cut wires in the engine compartment. They will be on the passenger side and taped tightly to the Ford harness. (Circled in Figure 1)

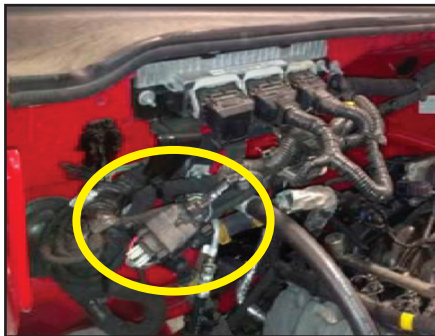


Figure 1

22. Connect the Muncie Blue/White wire to the Ford Blue/White wire; circuit PTO RELAY. (Ford early build color: White Violet)

23. Connect the Muncie Blue/Orange wire to the Ford Blue/Orange wire; circuit PTO REQ2. (Ford early build color: Black/ Brown)

24. Connect the Muncie Yellow/Green wire to the Ford Yellow/Green wire; circuit PTO REQ1. (Ford early build color: White/Red)

25. Connect the Muncie Green wire to the Ford Green wire; circuit PTO RPM. (Ford early build color: Tan/Orange)

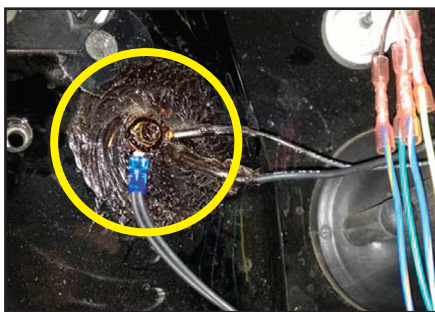


Figure 2

26. Connect the Muncie Black wire with the ring to the ground in the engine compartment. (Figure 2)

27. Now route the wire harness over to the drivers side, secure the wire harness to the existing Ford harness to insure the integrity of the harness.

28. Locate the Ford plug below the master cylinder. Remove this plug and ream the hole to 11/16". Use the Muncie supplied grommet (37T35674) in the hole and feed the 6-Wire connector through the hole. (Circled in Figure 3 and 4)

29. Route the remaining portion of the wire harness, with the activation solenoid connection and pressure switch connection, to the PTO and make connections. (Make sure to route harness away from hot surfaces and rotating machinery)



Figure 3

30. In the cab locate the 6-Wire connector that was fed through the fire wall (from step 28) Re-connect the two half's of the harness.

31. Connect the Muncie Violet wire to the 12v switched ignition wire (Ignition Hot Run/ACC). This should be a Yellow/Orange wire taped to the Data Link Connector. IF this does not exist you will need to locate the 12v connection at the key switch by removing the kick panel below the steering column. Once panel is removed locate the Gray/Brown Ford wire and SPLICE the Muncie Violet wire to this Gray/Brown wire. (Figure 5)



Figure 4

32. Connect the Muncie Black wire with ring terminal to the in cab ground lug. Ground lug located at left kick panel in front of drivers door (Figure 6)

33. Install the Muncie switch (30T35687) into the Muncie switch bracket (36MA1005) or mount switch directly into dash. (If using a Ford Auxiliary Switch, connect the Green Muncie wire lead to the Aux. Light and connect the Yellow wire lead to the Aux. Dash Switch.)

34. Route the wire harness to the bracket or switch location. Attach the switch connector block to the switch. (Note: the Green wire needs to be at the top of the switch.)

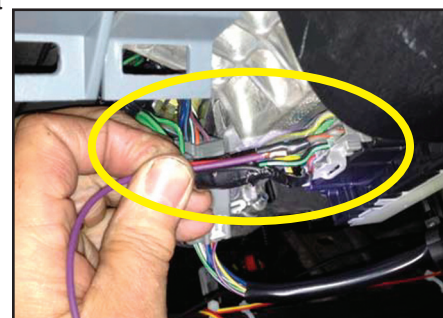


Figure 5

35. With the Truck in park and the PTO switch in the "Off" position,

**start the truck.** Listen for a few seconds for any unnatural noises. **Always stay clear of rotating components.** (Note: Should an unnatural noise occur, SHUT OFF the engine and place the ignition keys in your pocket. Remove the FR66 PTO and examine both the FR66 PTO and the transmission for any defects. Always keep the FR66 PTO and transmission run time to a minimum.)

36. Check transmission oil level and fill to proper level per instructions found in vehicles owner's manual. Run engine for 5 to 10 minutes to check for leaks. Always stay clear of rotating components.

37. **SHUT OFF engine and place the ignition keys in your pocket.** Inspect the cap screws to make sure they are properly tightened. Mounting bolts should be checked on a regular basis.



Figure 6

38. For help installing pumps or other equipment refer back to page 11 of Installation/Owners Manual.



IN10-01.G3-X Printed in the U.S.A.  
© Muncie Power Products, Inc. 2013

Muncie Power Products, Inc. Member of the Interpump Hydraulics Group  
General Offices and Distribution Center • P.O. Box 548 • Muncie, IN 47308-0548  
(765) 284-7721 • FAX (765) 284-6991 • E-mail info@munciepower.com  
Web site <http://www.munciepower.com>

Drive Products, Exclusive Agents for Canada, ISO Certified by an Accredited Registrar

